



PANDA EXPRESS, INC.  
 1683 Walnut Grove Ave.  
 Rosemead, California  
 91770  
 Telephone: 626.799.9898  
 Facsimile: 626.372.8288

All ideas, designs, arrangement and plans indicated or represented by this drawing are the property of Panda Express Inc. and were created for use on this specific project. None of these ideas, designs, arrangements or plans may be used by or disclosed to any person, firm, or corporation without the written permission of Panda Express Inc.

REVISIONS:


ISSUE DATE:

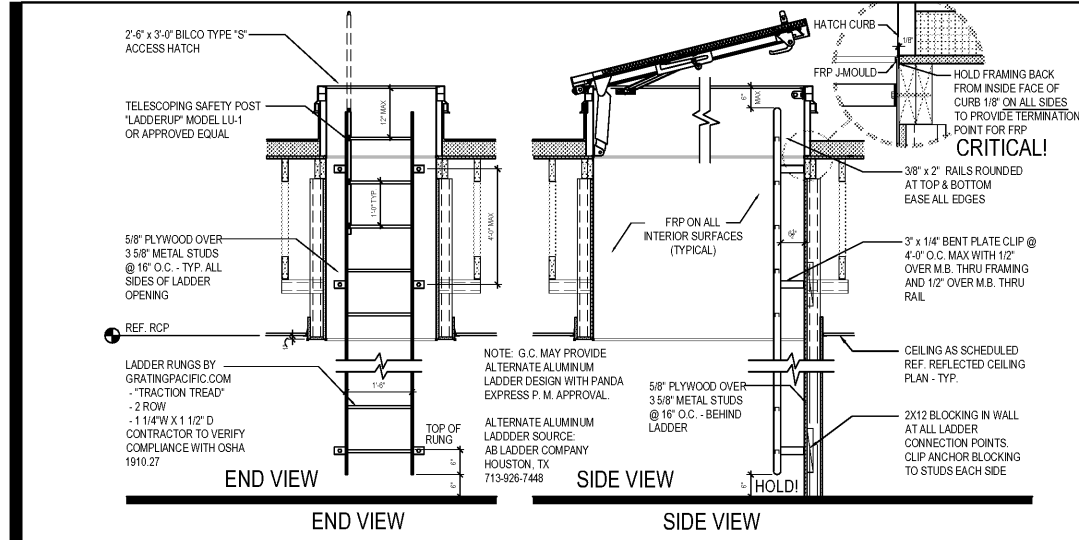
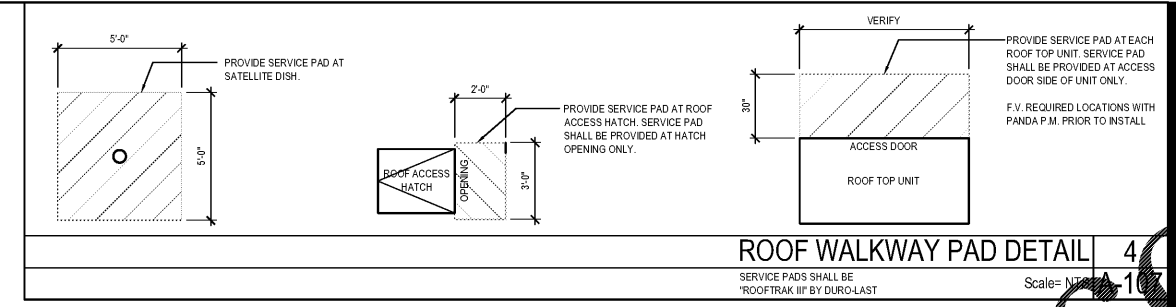
1st	ISSUE FOR BUILDING PERMIT	08-16-18
2nd	ISSUE FOR BID	11-29-18

DRAWN BY: RR

PANDA PROJECT # S8-19-D6558  
 ARCH PROJECT # 1804

RANDY REYNOLDS  
 ARCHITECT  
 315 WALTER ROBERTS ST • FRANKLIN, TN 37064  
 PHONE (615) 496-8750 • FAX (866) 584-1265  
 REGISTERED FLORIDA ARCHITECT # AR0015526

PANDA EXPRESS  
 US 98 and PORTSIDE DRIVE  
 3868 GULF BREEZE PARKWAY  
 GULF BREEZE, FL  
 2200 TRUE - R1 - DAB 12

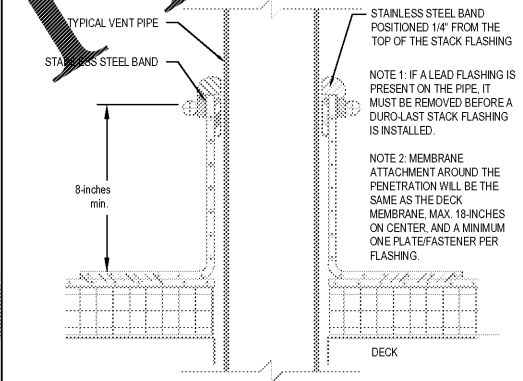
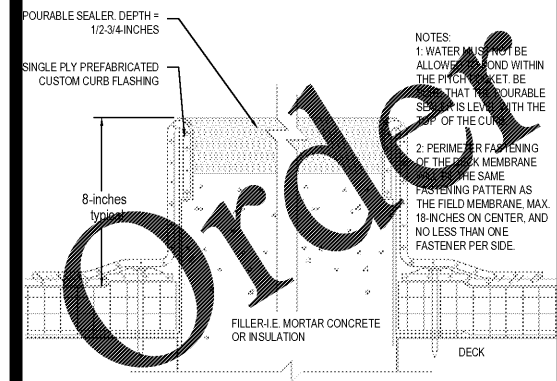
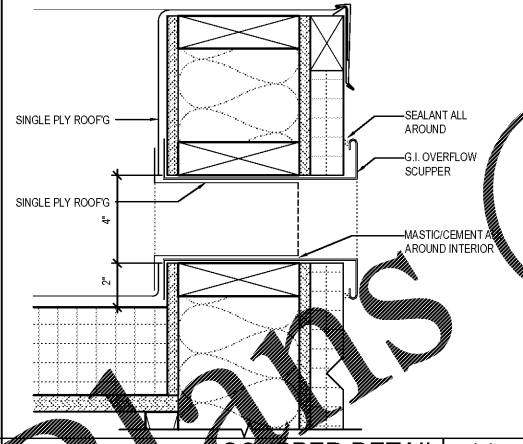
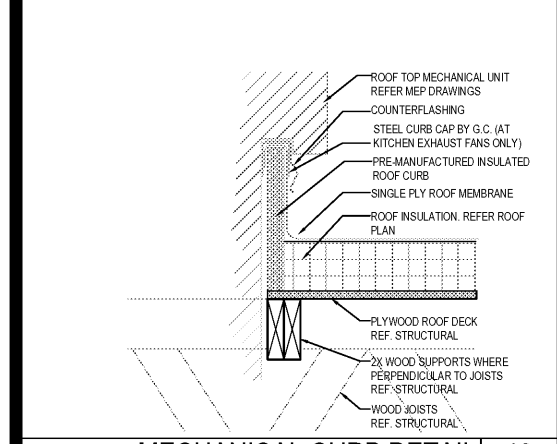
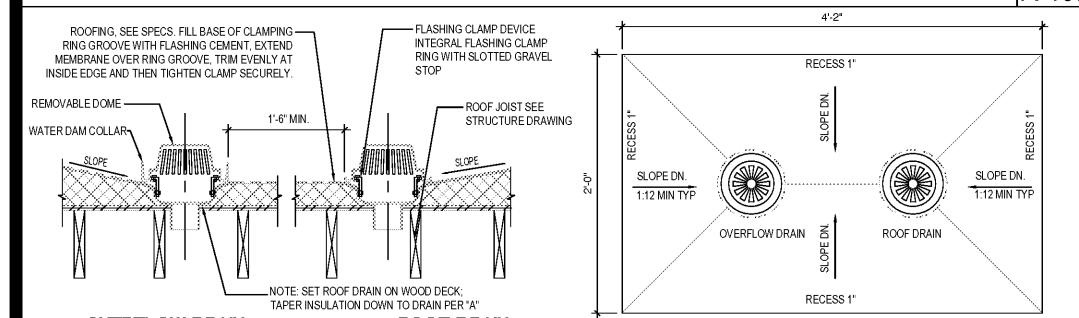
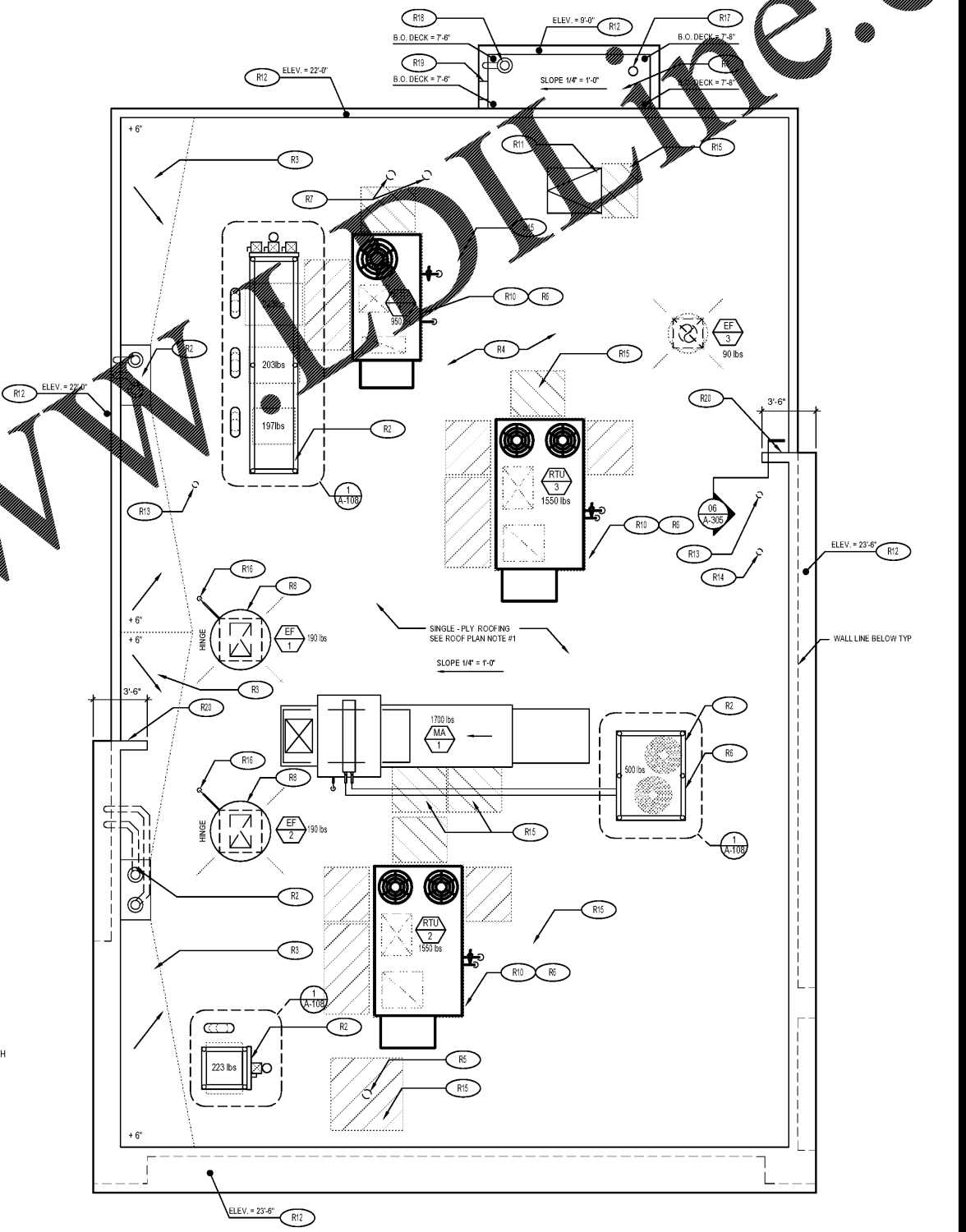


**ROOF PLAN NOTES:**

1. WHITE, SINGLE-PLY, PVC 40 MIL MECHANICALLY FASTENED ROOF MEMBRANE, AS MANUFACTURED BY DURO-LAST ROOFING, INC. NO ALTERNATES WILL BE ACCEPTED. PROVIDE STANDARD 15 YEAR WARRANTY.
2. 4'6" INDICATES APPROXIMATE ELEVATION OF THE TOP OF ROOF PLYWOOD SHEATHING AT PLYWOOD CRICKET. SEE TRUSS DRAWINGS FOR ACTUAL ROOF SLOPE. ALL ROOF ELEVATIONS ARE GIVEN FROM TOP OF INTERIOR CONCRETE FLOOR SLAB (U.O.N.).
3. ANY PROJECTION THROUGH ROOF SHALL BE DETAILED PER THE SINGLE PLY ROOFING MANUFACTURER'S RECOMMENDED DETAILS.
4. ALL EXHAUST FANS AND AIR CONDITIONING EQUIPMENT DESIGNATIONS ARE TAKEN FROM MECHANICAL DRAWINGS.
5. NOT USED.
6. CONTRACTOR SHALL CONFIRM THAT ALL AREAS OF ROOF ARE PROVIDED WITH POSITIVE DRAINAGE.
7. ALL ROOF PENETRATIONS FOR PLUMBING VENTS, POWER CONDUITS, ETC. SHALL BE FLASHED PER BUILDING SPECIFICATIONS AND DETAILS. VENTS SHALL BE AT LEAST 10'-0" HORIZONTAL OR 3'-0" ABOVE OUTSIDE AIR INTAKES (A/C UNITS, MAKE-UP AIR).
8. CONTRACTOR BE RESPONSIBLE FOR COORDINATION OF SIZES AND LOCATIONS OF ROOF OPENINGS (VENTS, DUCTS, ETC.). SPECIFICATIONS AND DETAILS. COORDINATE SIZES OF MECHANICAL EQUIPMENT PLATFORMS, BASES, ROOF EQUIPMENT PLATFORMS AND OPENINGS SHOWN ON DRAWINGS WITH EQUIPMENT BEING SUPPLIED. SEE TYPICAL DETAILS ON THIS SHEET ALSO COORDINATE INSTALLATION OF LIGHTING, POWER, CONVENIENCE OUTLETS ETC.
10. FOR ALL STRUCTURAL FRAMING MEMBERS, SIZES, AND ADDITIONAL INFORMATION, SEE STRUCTURAL DRAWINGS.
11. PROVIDE ROOF CRICKET AT MECHANICAL EQUIPMENT TO ASSURE POSITIVE ROOF DRAIN.
12. ALL ROOF EQUIPMENT TO BE SCREENED FROM PUBLIC VIEW.
13. ROOFTOP EQUIPMENT TO BE LOCATED AT LEAST 3' MINIMUM FROM TOWERS FOR SERVICING.
14. PROVIDE SERVICE PAD AT EACH UNIT ONLY AT SERVICE ACCESS DOOR.
15. ALL GAS PIPING ON ROOF TO BE PAINTED YELLOW.
16. ALL VENT STACKS SHALL BE TO ALIGN WITH INTERIOR PARAPET TYPICAL.

**ROOF PLAN KEYNOTES:**

- (R1) REF. EQUIPMENT TRACK SEE SHEET A-308
- (R2) ROOF DRAIN AND OVERFLOW DRAIN 15 A-107
- (R3) PROVIDE CRICKET TO ASSURE POSITIVE ROOF DRAINAGE
- (R4) SINGLE - PLY ROOFING SEE ROOF PLAN NOTE #1
- (R5) GALV RIGID METAL CONDUIT & WEATHERHEAD AND PULL STRING FOR SATELLITE CABLE. EXACT LOCATION ON ROOF TO BE COORDINATED WITH PANDA PROJECT MANAGER AND SERVICE PROVIDER. REFER TO E-104A-108 FOR SIZE AND INSTALLATION.
- (R6) ROOF TOP MECHANICAL UNIT SEE MECHANICAL DRAWING
- (R7) WATER HEATER VENT - SEE MEP PLANS. OFFSET VENTS AS REQUIRED TO MAINTAIN MIN. 10'-0" AWAY FROM AIR INTAKE SYSTEMS ON EQUIPMENT.
- (R8) EXHAUST FAN
- (R9) MECHANICAL UNIT CURB. SEE DETAIL 18A-107 AND MECHANICAL DRAWINGS.
- (R10) ROOF ACCESS HATCH LOCATE BETWEEN 2 ADJACENT TRUSSES 16 A-107
- (R11) TOP OF PARAPET. COPING IS PRE-FINISHED AND PURCHASED BY G.C. THROUGH DURO-LAST.
- (R12) PLUMBING VENT 13 A-107
- (R13) WEATHER PROOF HYDRANT
- (R14) PROVIDE WALK-WAY PAD AS SHOWN. REFERENCE DETAIL 4A-107
- (R15) POWER SUPPLY LOCATION FOR ROOFTOP EXHAUST FANS FOR KITCHEN HOOD
- (R16) ATTIC / ROOF CONVECTION VENT WITH WEATHER CAP AND INSECT SCREEN
- (R17) 4" ROOF DRAIN. REFERENCE PLUMBING DRAWINGS
- (R18) OVERFLOW SCUPPER. REFERENCE DETAIL 14A-107
- (R19) RETURN EXTERIOR FINISHES AROUND PARAPET RETURNS AND TERMINATE PER MANUFACTURER'S WRITTEN INSTRUCTIONS



**Order Plans**