

ROOM NAME	FLOOR	BASE	WALL	CEILING
100 DINING ROOM	T200 24" X 24" TILE	T109 6" X 48" TILE	P101, P104 T109 W102	C1 2' X 2' ARMSTRONG, SEPIA #N61311 C3 GYP BOARD W/ PAINT P103
101 SERVING AREA	QT 8" X 8" CONT. QUARRY TILE QT1 IN HIGH TRAFFIC AREAS	QT2 6" X 12" CONT. 1/8" RAD. MIN (KITCHEN EQUIPMENT ON 6" NSF APPROVED LEGS)	T109 TILE	C3 GYP BOARD W/ SMOOTH WASHABLE PAINT
102 DRIVE-THRU STATION	QT 8" X 8" CONT. QUARRY TILE QT1 IN HIGH TRAFFIC AREAS	QT2 6" X 12" CONT. 1/8" RAD. MIN (KITCHEN EQUIPMENT ON 6" NSF APPROVED LEGS)	WP1 FRP PANEL	C2 2' X 4' SUSPENDED GRID WASHABLE VINYL COATED GYP BOARD PANELS
103 KITCHEN	QT 8" X 8" CONT. QUARRY TILE QT1 IN HIGH TRAFFIC AREAS	QT2 6" X 12" CONT. 1/8" RAD. MIN (KITCHEN EQUIPMENT ON 6" NSF APPROVED LEGS)	WP3 S.S. BEHIND COOK LINE WP1 FRP PANEL	C2 2' X 4' SUSPENDED GRID WASHABLE VINYL COATED GYP BOARD PANELS
104 KITCHEN PREP.	QT 8" X 8" CONT. QUARRY TILE QT1 IN HIGH TRAFFIC AREAS	QT2 6" X 12" CONT. 1/8" RAD. MIN (KITCHEN EQUIPMENT ON 6" NSF APPROVED LEGS)	WP1 FRP PANEL	C2 2' X 4' SUSPENDED GRID WASHABLE VINYL COATED GYP BOARD PANELS
105 WALK-IN COOLER	QT 8" X 8" CONT. QUARRY TILE QT1 IN HIGH TRAFFIC AREAS	S.S. / ALUMINUM WITH 1/8" RADIUS	EXT S.S. INT ALUMINUM GALVANIZED S.S.	ALUMINUM GALVANIZED STAINLESS STEEL
105A WALK-IN FREEZER	QT 8" X 8" CONT. QUARRY TILE UNDER W/F SUBFLOOR	S.S. / ALUMINUM WITH 1/8" RADIUS	EXT S.S. INT ALUMINUM GALVANIZED S.S.	ALUMINUM GALVANIZED STAINLESS STEEL
106 MEN'S ROOM	T200 24" X 24" TILE	SCHLUTER	T108 TILE	C3 GYP BOARD W/ P101 SMOOTH WASHABLE PAINT
107 WOMEN'S ROOM	T200 24" X 24" TILE	SCHLUTER	T108 TILE	C3 GYP BOARD W/ P101 SMOOTH WASHABLE PAINT
108 VESTIBULE	T200 24" X 24" TILE	T109 6" X 48" TILE	P104 PAINT GYP BOARD T109 TILE	C3 GYP BOARD W/ P101 SMOOTH WASHABLE PAINT
109 STORAGE ROOM	T200 24" X 24" TILE	T109 6" X 48" TILE	WP1 FRP PANEL	C3 GYP BOARD W/ P101 SMOOTH WASHABLE PAINT
110 EXTERIOR STORAGE	SEALED CONCRETE, SMOOTH FINISH	-	WP1 FRP PANEL	C3 GYP BOARD W/ P101 SMOOTH WASHABLE PAINT

DOOR & HARDWARE SCHEDULE INSTALLED AND FURNISHED BY: G.C. UNLESS NOTED OTHERWISE

NO.	DESCRIPTION	NO.	DESCRIPTION
01	ALUMINUM STOREFRONT 3'-0" X 7'-0" ALUM. DARK BRONZE ANODIZED ALUM. 1/2" HOLLOW GLASS -	01	ALUMINUM STOREFRONT 3'-0" X 7'-0" ALUM. DARK BRONZE ANODIZED ALUM. 1/2" HOLLOW GLASS -
02	ALUMINUM STOREFRONT 3'-6" X 7'-0" ALUM. DARK BRONZE ANODIZED ALUM. 1/2" HOLLOW GLASS -	02	ALUMINUM STOREFRONT 3'-6" X 7'-0" ALUM. DARK BRONZE ANODIZED ALUM. 1/2" HOLLOW GLASS -
03	S.C. WOOD 3'-0" X 7'-0" H. MTL. PLASTIC LAMINATE PRE-FINISHED 1/2" SOLID -	03	S.C. WOOD 3'-0" X 7'-0" H. MTL. PLASTIC LAMINATE PRE-FINISHED 1/2" SOLID -
04	S.C. WOOD 3'-0" X 7'-0" H. MTL. PLASTIC LAMINATE PRE-FINISHED 1/2" SOLID -	04	S.C. WOOD 3'-0" X 7'-0" H. MTL. PLASTIC LAMINATE PRE-FINISHED 1/2" SOLID -
05	HOLLOW METAL 3'-6" X 7'-0" H. MTL. PAINTED 1/2" INSUL. -	05	HOLLOW METAL 3'-6" X 7'-0" H. MTL. PAINTED 1/2" INSUL. -
06	HOLLOW METAL 3'-0" X 7'-0" H. MTL. PAINTED 1/2" INSUL. -	06	HOLLOW METAL 3'-0" X 7'-0" H. MTL. PAINTED 1/2" INSUL. -

WALL SCHEDULE INSTALLED AND FURNISHED BY: G.C. UNLESS NOTED OTHERWISE

NO.	DESCRIPTION
1	3'-5/8" 20GA. METAL STUD WALL W/ 1/2" TYPE "X" GYP. BOARD BOTH SIDES (SEE ARCHITECTURAL DETAILS & ELEVATIONS)
2	3'-5/8" 20GA. METAL STUD WALL W/ 1/2" TYPE "X" GYP. BOARD ON ONE SIDE (SEE ARCHITECTURAL DETAILS & ELEVATIONS)
3	(2) 3'-5/8" 20GA. METAL STUD WALLS W/ 1/2" TYPE "X" GYP. BOARD BOTH SIDES (SEE ARCHITECTURAL DETAILS & ELEVATIONS)
4	3'-5/8" 20GA. METAL STUD LOW WALL W/ 1/2" TYPE "X" GYP. BD BOTH SIDES. PROVIDE 3/2" KNEE-WALL BRACE/POST @ CORNERS AND @ 48" O.C.
5	6" 20GA. METAL STUD WALL W/ 1/2" TYPE "X" GYP. BOARD BOTH SIDES (SEE ARCHITECTURAL DETAILS & ELEVATIONS)
6	6" 20GA. METAL STUD WALL W/ 1/2" TYPE "X" GYP. BOARD ONE SIDE (SEE ARCHITECTURAL DETAILS & ELEVATIONS)
7	6" 20GA. METAL STUD LOW WALL W/ 1/2" TYPE "X" GYP. BOARD BOTH SIDES. PROVIDE 3/2" KNEE-WALL BRACE/POST @ CORNERS AND @ 48" O.C.

WALL PANEL SCHEDULE INSTALLED AND FURNISHED BY: G.C. UNLESS NOTED OTHERWISE

NO.	MANUFACTURER	DESCRIPTION	MFG #	COLOR FINISH	REMARK
01	CRANE COMPOSITES INC.	S.S. PANEL (22 GA)	LBCS.14	#636 (GRAY), S/M/S	CONTACT: LINDA RUISE 310.857.9036
02	-	S.S. PANEL (22 GA)	-	BRUSHED FINISH	FURNISHED BY PX, INSTALLED BY G.C.
03	-	S.S. PANEL (22 GA)	-	DIAMOND PATTERN FINISH	FURNISHED BY PX, INSTALLED BY G.C.
04	NOT USED	-	-	-	-
05	NOT USED	-	-	-	-
06	NOT USED	-	-	-	-
07	WOLF GORDON	PRINT WALL COVERING	-	-	CONTACT: CATHY DY 310.770.1165 cathy_dy@wolfgordon.com

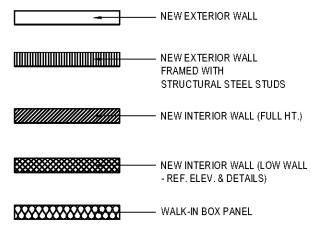
SPECIAL SURFACE SCHEDULE INSTALLED AND FURNISHED BY: G.C. UNLESS NOTED OTHERWISE

NO.	MANUFACTURER	PRODUCT	MFG #	STAIN / COLOR	FINISH	REMARK
01	SELECTIVE STONE	ARTIFICIAL QUARTZ	-	BEACH SAND QUARTZ	POLISHED	SERVICE COUNTER, SINK STAIN PROVIDED BY OTHER TRADE
02	SAMSUNG RADIANTZ	ARTIFICIAL QUARTZ	UG-450	URAL GRAY	POLISHED	LAVATORY, UNDER MOUNT SINK PROVIDED BY OTHER TRADE, INSTALLATION BY G.C.

INTERIOR PAINT SCHEDULE INSTALLED AND FURNISHED BY: G.C. UNLESS NOTED OTHERWISE

NO.	MANUFACTURER	MFG #	COLOR	FINISH	REMARK
01	SHERWIN-WILLIAMS	SW 7065	ARGOS	PROMAR 200, ZERO VOC, LATEX SEMI-GLOSS	REAR SERVICE DOOR
02	NOT USED	-	-	-	-
03	SHERWIN-WILLIAMS	SW 6252	ICE CUBE	ALL-SURFACE ENAMEL SATIN	RESTROOM & RESTROOM VESTIBULE CEILING, SERVICE LINE SOFFIT
04	NOT USED	-	-	-	-
05	SHERWIN-WILLIAMS	SW 7032	WARM STONE	DRYING ROOM SOFFITS	-
06	SHERWIN-WILLIAMS	SW 6155	RICE GRAY	PROMAR 200, ZERO VOC, LATEX EGG-SHELL	DRIVING RM. WALLS, RESTROOM VESTIBULE WALLS
07	NOT USED	-	-	-	-
08	SHERWIN-WILLIAMS	SW 7020	BLACK FAN	SEMIGLOSS, ZERO VOC	RESTROOM DOOR FRAMES & LCD NICHE (BACK WALL)
09	SHERWIN-WILLIAMS	SW 7675	SEALSKIN	ALL-SURFACE ENAMEL SATIN	FRONT & BACK & UNDERSIDE FACES OF SERVICE COUNTER SOFFIT

WALL LEGEND

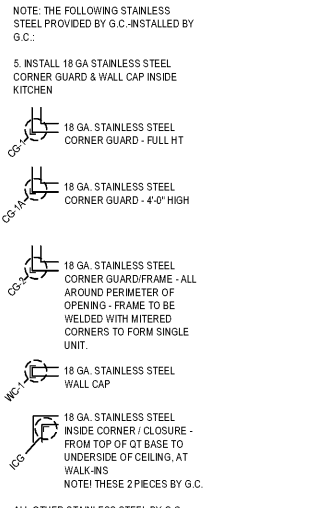


NOTE: THE FOLLOWING STAINLESS STEEL PROVIDED BY PX-INSTALLED BY G.C.:

- PANEL DIVIDERS AT WP3
- INSIDE CORNER AT WP3 TO WP2
- FLASHINGS AT TOP OF BASE WP3
- WP2 PIECE AT LENGTH OF WALL

NOTE: THE FOLLOWING STAINLESS STEEL PROVIDED BY G.C.-INSTALLED BY G.C.:

- INSTALL 18 GA STAINLESS STEEL CORNER GUARD & WALL CAP INSIDE KITCHEN



ALL OTHER STAINLESS STEEL BY G.C.

NOTE: ALL MISC STAINLESS (CAPS, CORNERS ETC) SHALL BE 18 GA TYPE 304 BRUSHED STAINLESS STEEL.

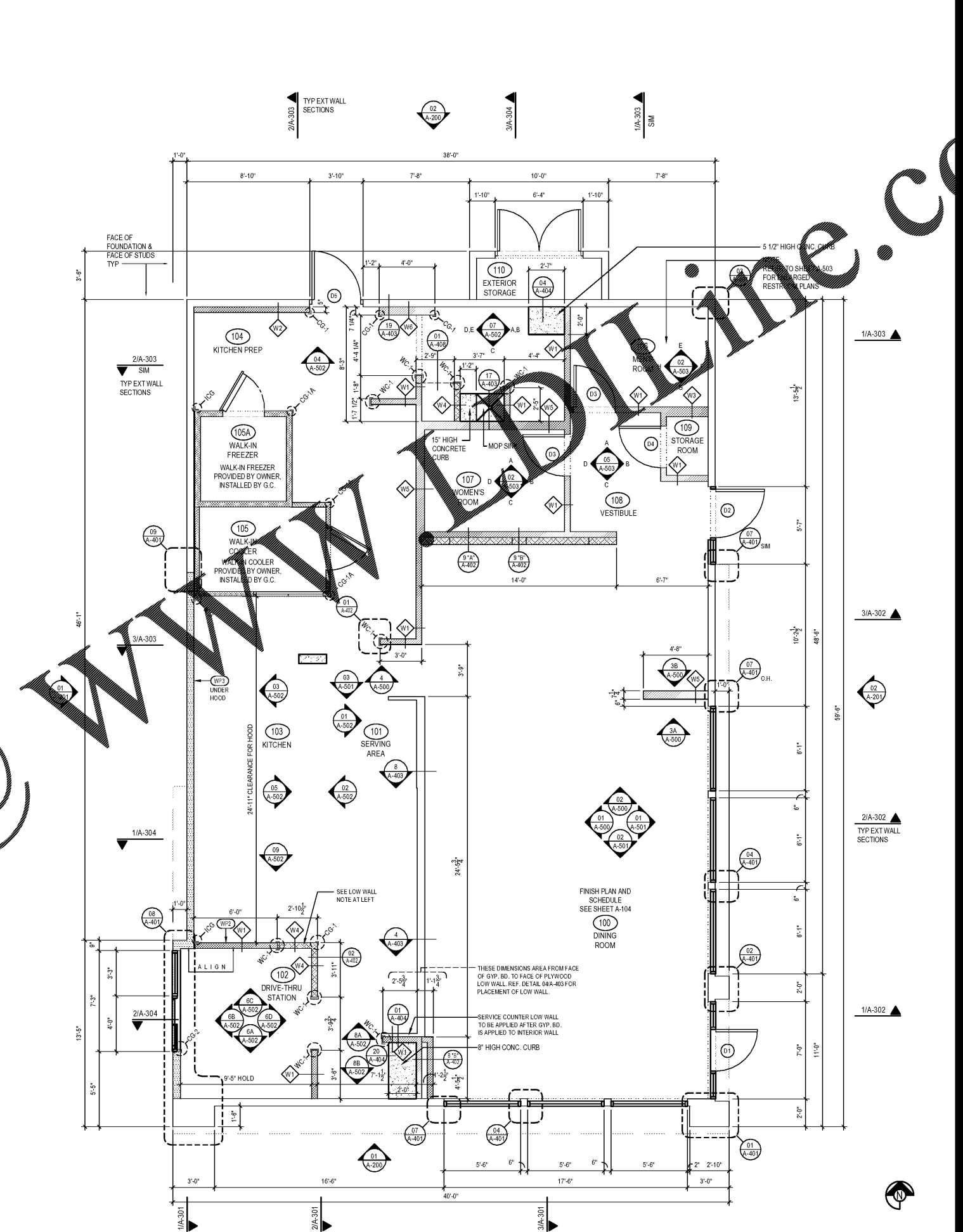
*ATL-SHAPED LOW WALL AT DRIVE-THRU, PROVIDE WELDED AND GROUND SMOOTH WALL CAP. SHOULD "APPEAR AS THOUGH ONE PIECE"

AT LOW WALLS WHERE S.S. CAPS JOIN S.S. CORNER GUARDS, OR WHERE S.S. CORNER GUARDS WRAP AN OPENING, S.S. WELD ALL JOINTS AND GRIND SMOOTH.

NOTE: *S.C. TO INSTALL MIN 3 1/2" NON-COMBUSTIBLE MINERAL FIBERGLASS BATTS SOUND INSULATION AT ALL RESTROOM PARTITIONS AND CEILING.

*ALL INTERIOR DIMENSIONS ARE FROM OUTSIDE FACE OF DRYWALL TO OUTSIDE FACE OF DRYWALL TYPE.

TILE SCHEDULE (SEE SHEET A-104)



FLOOR PLAN 1 Scale: 1/4" = 1'-0" A-103



PANDA EXPRESS, INC.
1683 Walnut Grove Ave.
Rosemead, California 91770
Telephone: 626.799.9898
Facsimile: 626.372.8288

All ideas, designs, arrangement and plans indicated or represented by this drawing are the property of Panda Express Inc. and were created for use on this specific project. None of these ideas, designs, arrangements or plans may be used by or disclosed to any person, firm, or corporation without the written permission of Panda Express Inc.

REVISIONS:

NO.	DESCRIPTION	DATE
1st	ISSUE FOR BUILDING PERMIT	08-16-18
2nd	ISSUE FOR BID	11-29-18

ISSUE DATE:

DRAWN BY: RR

PANDA PROJECT #: S8-19-D6558

ARCH PROJECT #: 1804

RANDY REYNOLDS ARCHITECT

315 WALTER ROBERTS ST • FRANKLIN, TN 37064
PHONE (615) 499-8250 • FAX (666) 584-1325
REGISTERED FLORIDA ARCHITECT # AR0015528

PANDA EXPRESS
US 98 and PORTSIDE DRIVE
3868 GULF BREEZE PARKWAY
GULF BREEZE, FL
2200 TRUE - R1 - DAB 12

A-103
FLOOR PLAN

Order Plans @