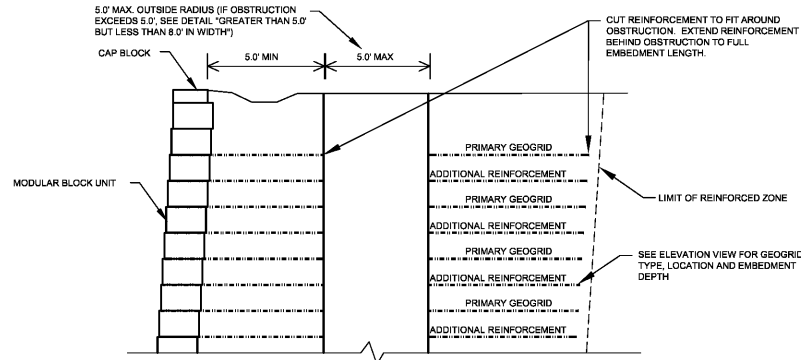
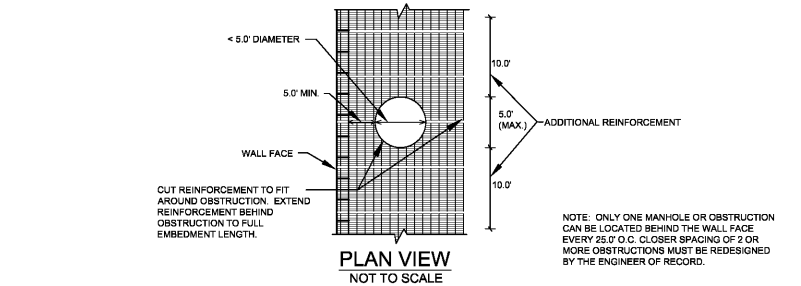


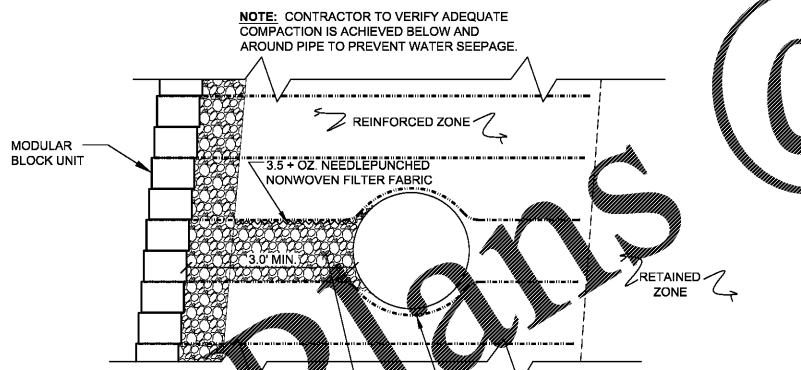


Know what's below
Call before you dig



NOTE: AT THE OBSTRUCTION AND EXTENDING 10' ALONG WALL LENGTH ON EACH SIDE OF OBSTRUCTION, PLACE INTERMEDIATE REINFORCEMENT LAYERS IN ADDITION TO THE PRIMARY REINFORCEMENT LAYERS EXTENDING TO FULL EMBEDMENT DEPTH (i.e., THE NUMBER OF REINFORCEMENT LAYERS PER RESPECTIVE WALL HEIGHT WILL DOUBLE OVER A LENGTH OF WALL MEASURING 25' CENTERED ON THE OBSTRUCTION).

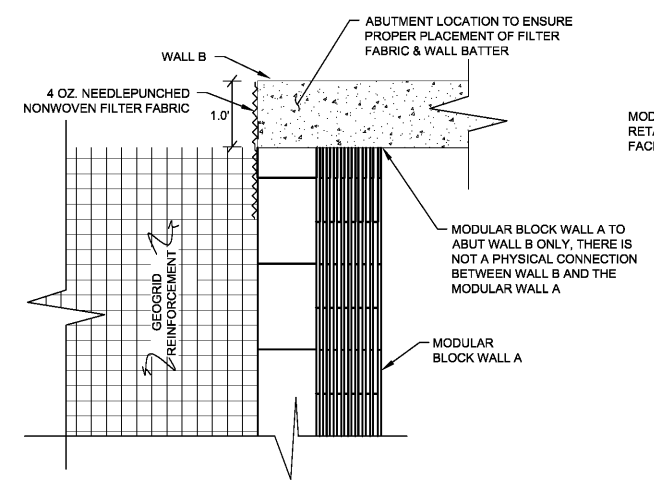
**CROSS SECTION
VERTICAL OBSTRUCTION DETAIL
(LESS THAN 5.0' IN WIDTH OR DIA. AND AT LEAST 6.0' FROM WALL FACE)**



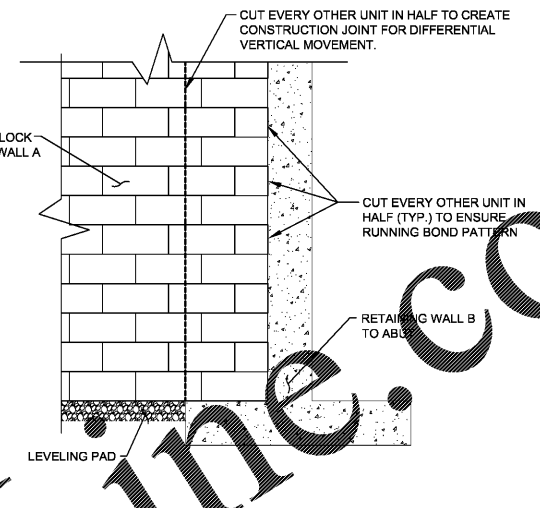
FILL BETWEEN PIPE AND WALL WITH STONE WHERE GAP IS TOO NARROW TO ACHIEVE REQUIRED COMPACTION

FOR STORM PIPES LOCATED WITHIN THE RETAINING WALL REINFORCED ZONE, COORDINATE PIPE INSTALLATION WITH WALL CONSTRUCTION. WRAP GEOGRID UNDER/OVER PIPE (PROVIDE 2" MIN. SOIL OR PIPE BEDDING MATERIAL BETWEEN PIPE AND GEOGRID)

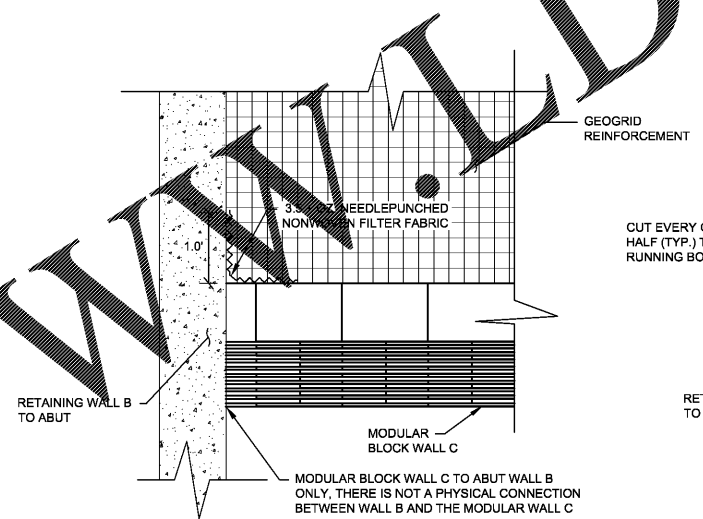
**HORIZONTAL OBSTRUCTION DETAIL
(CROSS-SECTION)
NOT TO SCALE**



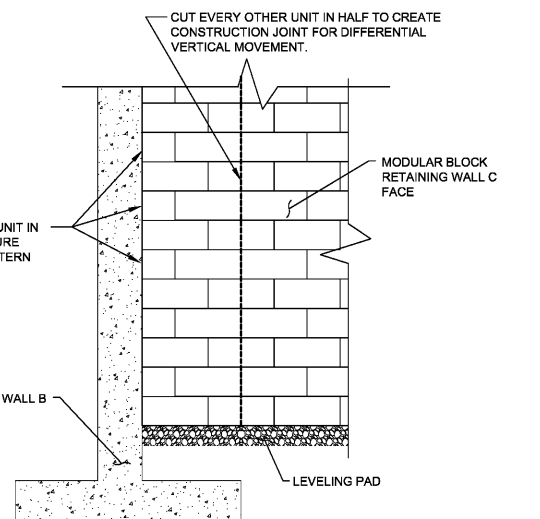
**WALL ABUTMENT DETAILS
WALL A (STA.0+72) AT WALL B (STA.0+00)
NOT TO SCALE**



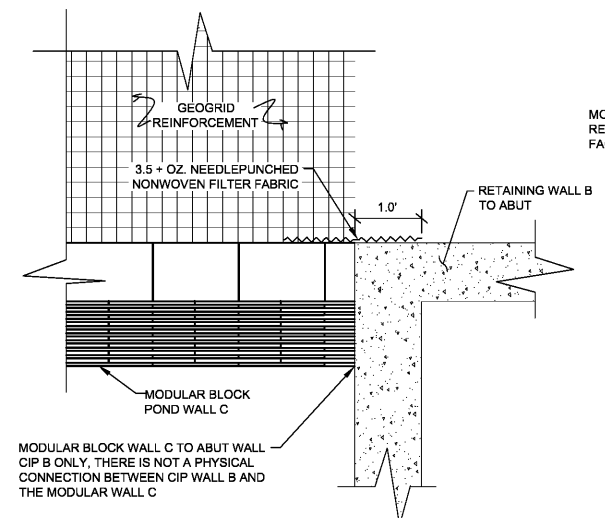
ELEVATION VIEW



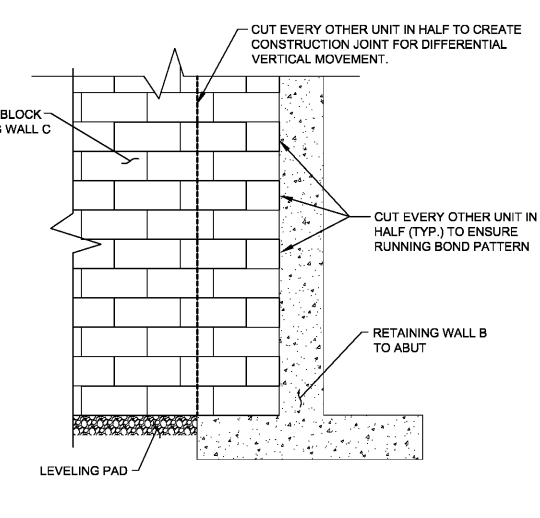
**WALL ABUTMENT DETAILS
WALL B (STA.0+30) AT WALL C (STA.0+00)
NOT TO SCALE**



ELEVATION VIEW



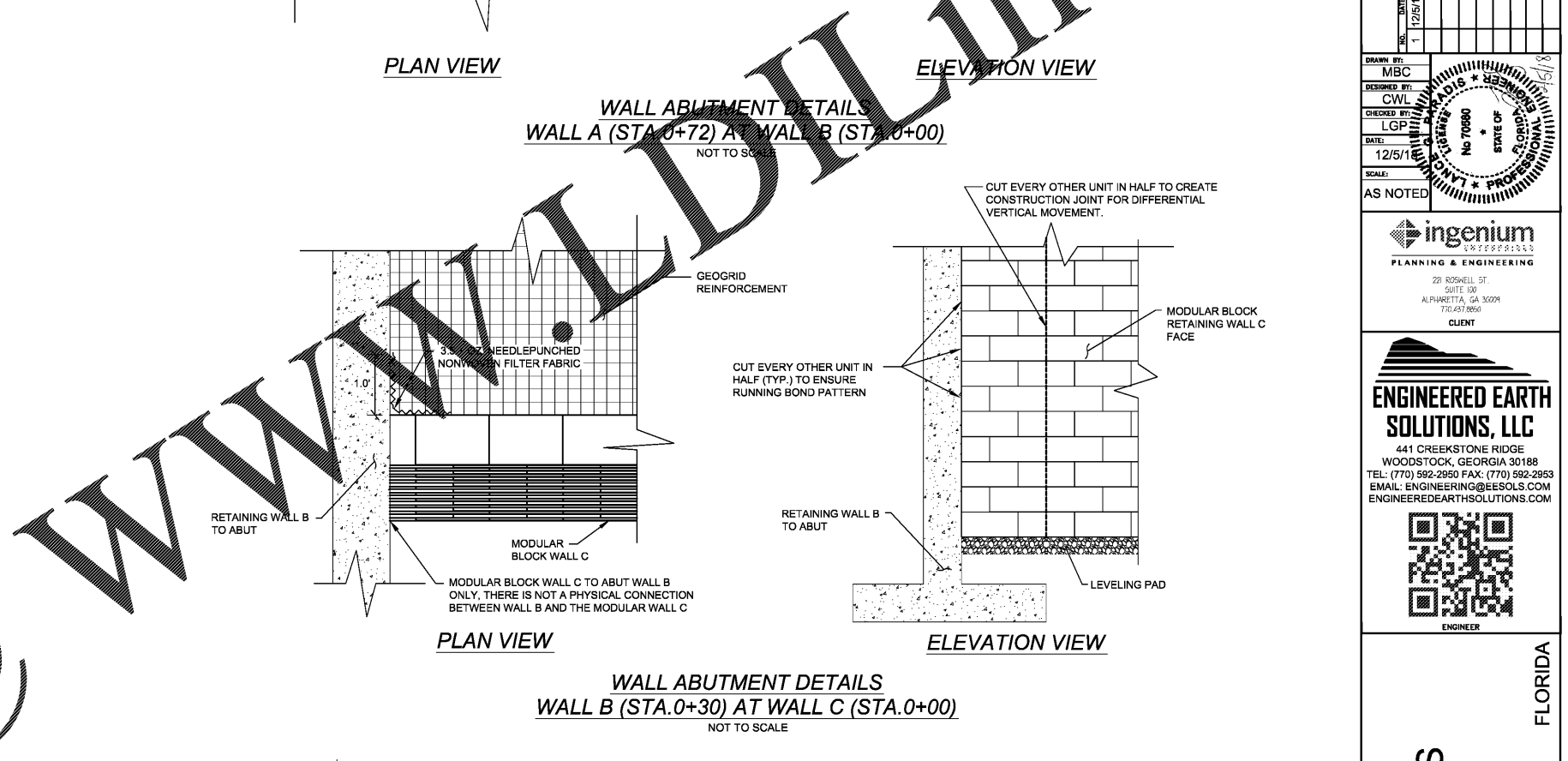
**WALL ABUTMENT DETAILS
WALL C (STA.2+20) AT WALL B (STA.2+62)
NOT TO SCALE**



ELEVATION VIEW

THIS DESIGN IS BASED UPON SPECIFIC PROPERTIES OF MATERIALS WHICH ARE PROPRIETARY. ANY SUBSTITUTION OF THE SPECIFIED PRODUCTS OR CHANGE IN STRUCTURE GEOMETRY WILL INVALIDATE THIS DESIGN. THIS DRAWING IS BEING FURNISHED FOR USE ON THIS SPECIFIC PROJECT ONLY. ANY PARTY ACCEPTING THIS DOCUMENT DOES SO IN CONFIDENCE AND AGREES THAT IT SHALL NOT BE DUPLICATED, IN WHOLE OR IN PART, NOR DISCLOSED TO OTHERS WITHOUT THE CONSENT OF ENGINEERED EARTH SOLUTIONS, LLC. THIS DRAWING, DESIGN NOTES, AND ASSOCIATED CALCULATIONS HAVE BEEN PREPARED BY ENGINEERED EARTH SOLUTIONS, LLC. FROM INFORMATION PROVIDED BY OTHERS. FINAL DETERMINATION OF THE SUITABILITY OF ANY INFORMATION CONTAINED HEREIN IS THE RESPONSIBILITY OF THE USER.

COPYRIGHT © 2018 ENGINEERED EARTH SOLUTIONS, LLC.



NO.	DATE	DESCRIPTION
1	12/5/18	ISSUE FOR CONSTRUCTION

DESIGNED BY: MBC
 CHECKED BY: LGP
 DATE: 12/5/18
 SCALE: AS NOTED

Professional Engineer Seal: No. 70680, State of Florida, Professional Engineer

ingenium
 PLANNING & ENGINEERING
 221 ROSWELL ST. SUITE 108
 ALPHARETTA, GA 30204
 770.457.8650
 CLIENT

ENGINEERED EARTH SOLUTIONS, LLC
 441 CREEKSTONE RIDGE
 WOODSTOCK, GEORGIA 30188
 TEL: (770) 592-2950 FAX: (770) 592-2953
 EMAIL: ENGINEERING@EESOLS.COM
 ENGINEEREARTH SOLUTIONS.COM

ENGINEER

FLORIDA
**PANDA EXPRESS
 CFT PLAZA**
 GULF BREEZE

DETAIL SHEET

SHEET
RW5
 OF 5

PROJECT NO.: M18-0894