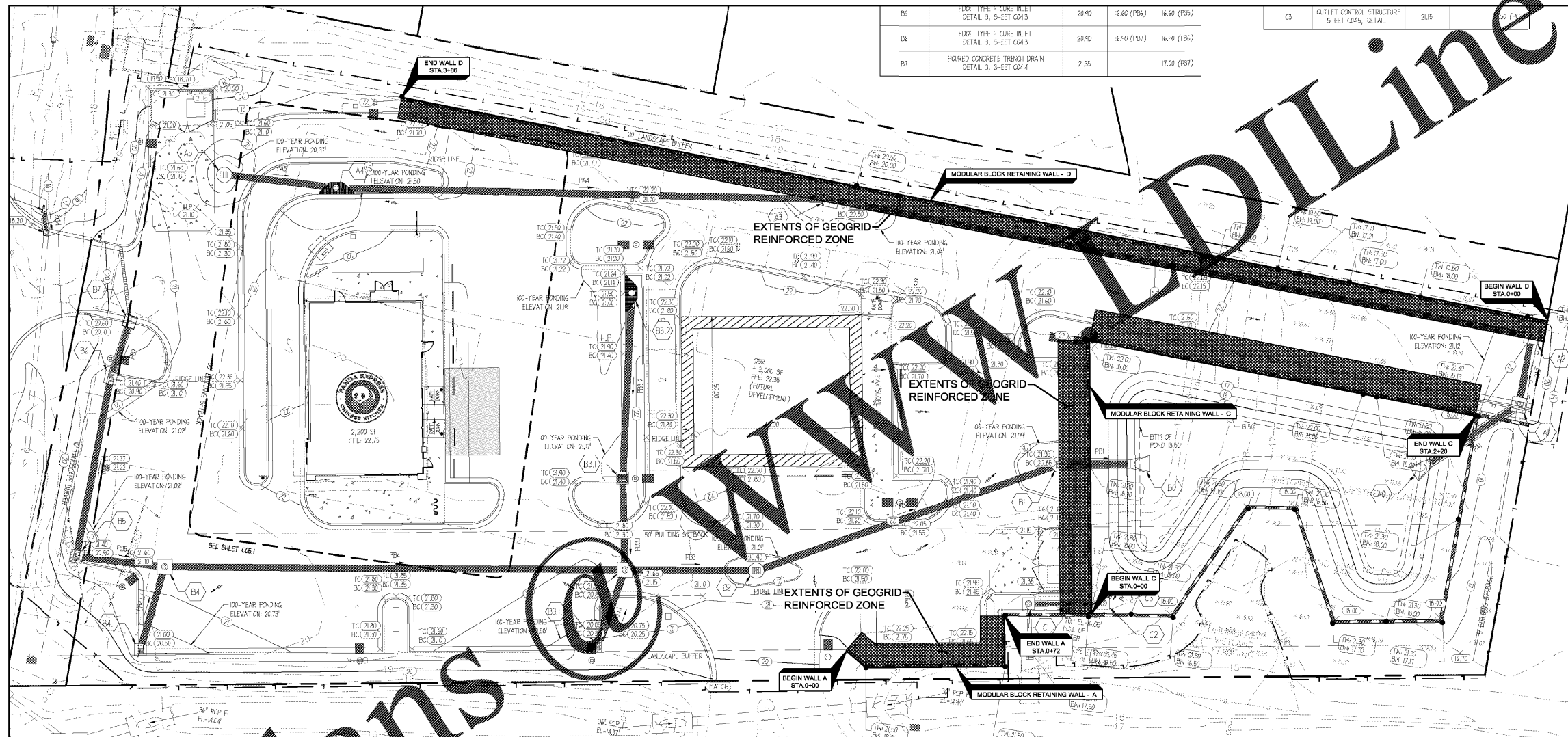




Know what's below
Call before you dig

NOTE: CONSTRUCTION VERIFICATION OF THE WALL INSTALLATION BY AN ENGINEER IS REQUIRED AND MUST BE PROVIDED BY A KNOWLEDGEABLE GEOTECHNICAL ENGINEER FAMILIAR WITH MECHANICALLY STABILIZED STRUCTURES.



B5	FDF TYPE 4 CURVE INLET DETAIL 3, SHEET G04.3	20.90	4.40 (75%)	4.40 (75%)
B6	FDF TYPE 4 CURVE INLET DETAIL 3, SHEET G04.3	20.90	4.50 (75%)	4.50 (75%)
B7	POURED CONCRETE TRINCH DRAIN DETAIL 3, SHEET G04.4	21.35	17.00 (75%)	17.00 (75%)

C3	OUTLET CONTROL STRUCTURE SHEET G04.5, DETAIL 1	21.05	50 (75%)	50 (75%)
----	---	-------	----------	----------

PLAN VIEW
NOT TO SCALE

THE ABOVE PLAN VIEW HAS BEEN COPIED FROM CIVIL SITE PLANS PREPARED BY INGENIUM ENTERPRISES DATED 11/21/18 FOR REFERENCE. REFER TO CIVIL SITE PLANS FOR STRUCTURE LAYOUT INFORMATION. MODULAR BLOCK WALL LAYOUT SHALL BE APPROVED BY THE CIVIL SITE DESIGNER PRIOR TO CONSTRUCTION. THE TOP OF WALL LOCATION IS SHOWN. THE SURVEYOR SHALL ADJUST THE BOTTOM OF WALL LOCATION TO ACCOUNT FOR WALL BATTER.

Order Plans

WWW.DLINE.COM

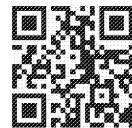


REVISION/ISSUE

NO.	DATE	DESCRIPTION
1	12/5/18	ISSUE FOR CONSTRUCTION

ingenium
PLANNING & ENGINEERING
22 ROSWELL ST.
SUITE 100
ALPHARETTA, GA 30009
CLIENT

ENGINEERED EARTH SOLUTIONS, LLC
441 CREEKSTONE RIDGE
WOODSTOCK, GEORGIA 30188
TEL: (770) 592-2950 FAX: (770) 592-2953
EMAIL: ENGINEERING@EESOLS.COM
ENGINEER@EARTH SOLUTIONS.COM



PANDA EXPRESS
CFT PLAZA
FLORIDA
GULF BREEZE

PLAN VIEW SHEET
SHEET
RW2
OF 5
PROJECT NO.: M18-0894

THIS DESIGN IS BASED UPON SPECIFIC PROPERTIES OF MATERIALS WHICH ARE PROPRIETARY. ANY SUBSTITUTION OF THE SPECIFIED PRODUCTS OR CHANGE IN STRUCTURE GEOMETRY WILL INVALIDATE THIS DESIGN. THIS DRAWING IS BEING FURNISHED FOR USE ON THIS SPECIFIC PROJECT ONLY. ANY PARTY ACCEPTING THIS DOCUMENT DOES SO IN CONFIDENCE AND AGREES THAT IT SHALL NOT BE DUPLICATED, IN WHOLE OR IN PART, NOR DISCLOSED TO OTHERS WITHOUT THE CONSENT OF ENGINEERED EARTH SOLUTIONS, LLC. THIS DRAWING, DESIGN NOTES, AND ASSOCIATED CALCULATIONS HAVE BEEN PREPARED BY ENGINEERED EARTH SOLUTIONS, LLC. FROM INFORMATION PROVIDED BY OTHERS. FINAL DETERMINATION OF THE SUITABILITY OF ANY INFORMATION CONTAINED HEREIN IS THE RESPONSIBILITY OF THE USER.