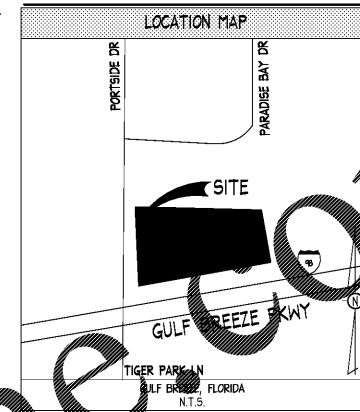


EROSION CONTROL LEGEND

ESPC BMP	LINETYPE/SYMBOL	REFERENCE
CE CONSTRUCTION EXIT		DETAIL 2, C06.2
SF SEDIMENT FENCE		DETAIL 1, C06.2
IP INLET PROTECTION		DETAIL 2, C06.3
TS TEMPORARY SEEDING		DETAIL 1, C06.3
PS PERMANENT SEEDING		DETAIL 1, C06.4
TPF TREE PROTECTION FENCE		DETAIL 1, C06.5
LIMITS OF CONSTRUCTION	L	SEE PLANS

SEE LANDSCAPE/TREE PROTECTION PLANS FOR LEGEND SPECIFIC TO THOSE SHEETS



ESPC NOTES

- GENERAL**
- EROSION CONTROL MEASURES SHALL BE MAINTAINED AT ALL TIMES. IF FULL IMPLEMENTATION OF THE APPROVED PLAN DOES NOT PROVIDE FOR EFFECTIVE EROSION CONTROL, ADDITIONAL EROSION CONTROL MEASURES AND PRACTICES SHALL BE IMPLEMENTED TO CONTROL OR TREAT THE SEDIMENT SOURCE AT THE EXPENSE OF THE CONTRACTOR.
  - THE ESCAPE OF SEDIMENT FROM THE SITE SHALL BE PREVENTED BY THE INSTALLATION OF EROSION AND SEDIMENT CONTROL MEASURES AND PRACTICES PRIOR TO LAND DISTURBING ACTIVITIES.
  - EROSION CONTROL MEASURES SHALL BE MAINTAINED AT ALL TIMES. IF FULL IMPLEMENTATION OF THE APPROVED PLAN DOES NOT PROVIDE FOR EFFECTIVE EROSION CONTROL, ADDITIONAL EROSION AND SEDIMENT CONTROL MEASURES SHALL BE IMPLEMENTED TO CONTROL OR TREAT THE SEDIMENT SOURCE.
  - ANY DISTURBED AREA LEFT EXPOSED FOR A PERIOD GREATER THAN 14 DAYS SHALL BE STABILIZED WITH MULCH OR TEMPORARY SEEDING.
  - ANY AMENDMENT TO THE EROSION CONTROL PLANS WHICH HAVE A SIGNIFICANT EFFECT ON BMPs WITH A HYDRAULIC COMPONENT MUST BE CERTIFIED BY THE DESIGN PROFESSIONAL.
  - THE FERTILIZER IS ONLY RESPONSIBLE FOR THE FOR THE INSTALLATION AND MAINTENANCE OF STORM WATER MANAGEMENT DEVICES PRIOR TO STABILIZATION OF THE SITE AND NOT THE OPERATION AND MAINTENANCE OF SUCH STRUCTURES AFTER CONSTRUCTION ACTIVITIES HAVE BEEN COMPLETED. EROSION CONTROL AND TREE PROTECTION MEASURES SHALL BE INSTALLED PRIOR TO ANY OTHER CONSTRUCTION ACTIVITY AND MAINTAINED UNTIL PERMANENT GROUND COVER IS ESTABLISHED.
  - SEE GRADING & DRAINAGE NOTES.

- SLOPES AND DISTURBED AREA STABILIZATION**
- CONCENTRATED FLOW AREAS AND ALL SLOPES 2H:1V OR STEEPER SHALL BE STABILIZED WITH THE APPROPRIATE EROSION CONTROL MATTING OR BLANKET.
  - ALL CUT AND FILL SLOPES MUST BE SURFACE ROUGHENED AND VEGETATED WITHIN (7) DAYS OF THEIR CONSTRUCTION.
  - ALL DISTURBED AREAS SHALL BE GRASSED AS SOON AS CONSTRUCTION PHASES PERMIT. NO EXPOSED GRADE WILL BE LEFT UNSTABLE FOR MORE THAN 7 DAYS.
  - PERMANENT GRASSING AND LANDSCAPING OF DISTURBED AREAS SHALL BE COMPLETED AS QUICKLY AS POSSIBLE. TEMPORARY STABILIZATION BY MULCHING AND/OR TEMPORARY SEEDING WILL BE REQUIRED IN THE EVENT OF PROJECT DELAYS.
  - WIRE MESH REINFORCED SEDIMENT BARRIERS SHALL BE PLACED AT THE TOE OF ALL FILL SLOPES.

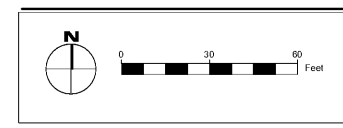
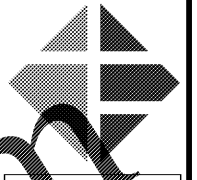
- DRAINAGE**
- ALL DRAINAGE STRUCTURES SHALL BE EROSION PROOFED.
  - LENGTH OF RIP-RAP PADS AT PIPE OUTLETS SHALL BE A MINIMUM LENGTH OF (4) SIX TIMES THE DIAMETER OF THE PIPE IN FEET.
  - A 25' UNDISTURBED VEGETATIVE STREAM BUFFER ADJACENT TO ALL RUNNING STREAMS AND CREEKS WILL BE LEFT UNDISTURBED AND MAINTAINED THROUGH ALL PHASES OF CONSTRUCTION. REFER TO PLANS FOR EXACT LOCATIONS.

- TREE PROTECTION**
- ALL BUFFERS AND TREE SAVE AREAS SHALL BE CLEARLY IDENTIFIED WITH FLAGGING AND/OR FENCING PRIOR TO COMMENCEMENT OF ANY LAND DISTURBANCE.
  - ALL TREE PROTECTION DEVICES SHALL BE INSTALLED PRIOR TO START OF LAND DISTURBANCE AND MAINTAINED UNTIL FINAL LANDSCAPING IS INSTALLED. NO PARKING, STORAGE, OR OTHER CONSTRUCTION SITE ACTIVITIES ARE TO OCCUR WITHIN TREE PROTECTION AREAS.
- MAINTENANCE AND INSPECTIONS**
- SEDIMENT AND EROSION CONTROL MEASURES AND PRACTICES SHALL BE INSPECTED DAILY.
  - SEDIMENT STORAGE MAINTENANCE INDICATORS MUST BE INSTALLED IN SEDIMENT STORAGE STRUCTURES, INDICATING THE US FULL VOLUME.
  - SEDIMENT CONTROL DEVICES MUST BE INSPECTED DAILY AND CHECKED AFTER EACH STORM EVENT AND CLEANED OR REPLACED WHEN THEY REACH US OF DESIGN CAPACITY.
  - ALL TREE PROTECTION FENCING TO BE INSPECTED DAILY AND REPLACED OR REPAIRED AS NEEDED.
  - MAINTENANCE OF ALL SOIL AND SEDIMENTATION CONTROL MEASURES AND PRACTICES, WHETHER TEMPORARY OR PERMANENT, SHALL BE AT ALL TIMES THE RESPONSIBILITY OF THE CONTRACTOR.

CONTRACTOR SHALL PROTECT ALL ITEMS OUTSIDE LIMITS OF CONSTRUCTION UNLESS OTHERWISE NOTED IN THE CONSTRUCTION PLANS OR SPECIFICATIONS.

CONTRACTOR SHALL FIELD VERIFY ALL EXISTING UTILITIES (LOCATIONS AND ELEVATIONS) PRIOR TO STARTING CONSTRUCTION AND ALERT ENGINEER TO ANY DISCREPANCIES IMMEDIATELY.

24-HOUR CONTACT:  
MR. CHUNNI TAI  
(562) 841-0538

**INGENIUM**  
PLANNING & ENGINEERING  
221 ROSWELL ST.  
SUITE 100  
ALPHARETTA, GA 30009  
770.457.8650  
WWW.INGENIUMTEAM.COM



THIS ITEM HAS BEEN DIGITALLY SIGNED AND SEALED BY JAMES D. NEFF, PE ON THE DATE ADJACENT TO THE SEAL.  
PRINTED COPIES OF THIS DOCUMENT ARE NOT CONSIDERED SIGNED AND SEALED AND THE SIGNATURE MUST BE VERIFIED ON ANY ELECTRONIC COPIES.

STATE OF FLORIDA  
AUTHORIZATION NUMBER  
8370  
PLANS PREPARED BY INGENIUM ENTERPRISES FORMERLY GRIMALD CRAWFORD

PANDA EXPRESS/CFT PLAZA  
3668 GULF BREEZE PARKWAY  
GULF BREEZE, FLORIDA



CLIENT:  
CFT NV DEVELOPMENTS, LLC  
1120 N. TOWN CENTER DR., SUITE 150  
LAS VEGAS, NV 89144  
PHONE: (626) 799-8989

REVISION HISTORY

NO.	DESCRIPTION	DATE
1	ISSUE FOR BIDDING	11/2/2018

THE CIVIL ENGINEER REGULARLY UPDATES ELECTRONIC FILES DURING THE DEVELOPMENT OF A PROJECT AS A RESULT, THE DATA INCLUDED IN ANY CAD FILE OR DRAWING PRIOR TO ITS FINAL RELEASE DOES NOT NECESSARILY REFLECT THE COMPLETE SCOPE OR CONTENT AS REVISED IN THE CONTRACT. THE CONTENTS IN THESE FILES MAY THEREFORE BE PRELIMINARY, INCOMPLETE, WORK IN PROGRESS, AND SUBJECT TO CHANGE. FURTHERMORE, THE INFORMATION CONTAINED HEREIN IS THE SOLE PROPERTY OF THE CIVIL ENGINEER. THE ORIGINAL DESIGN REPRESENTED HEREIN BY THIS INFORMATION SHALL NOT BE LOANED, ALTERED, OR REPRODUCED IN ANY MANNER WITHOUT THE EXPRESS WRITTEN CONSENT OF THE CIVIL ENGINEER. THESE PLANS ARE SUBJECT TO FEDERAL COPYRIGHT LAWS. ANY USE OF THESE MATERIALS EXCEPTED WITHIN PERMISSION OF THE CIVIL ENGINEER IS PROHIBITED.

PROJ. #	170056
ENGR. NAME	170056 C06.DWG
ISSUE DATE	11/2/2018
PROJ. MGR.	EF
ESPC PLAN	
C06.1	
SHEET NUMBER	

ISSUE FOR BID

Order Plans