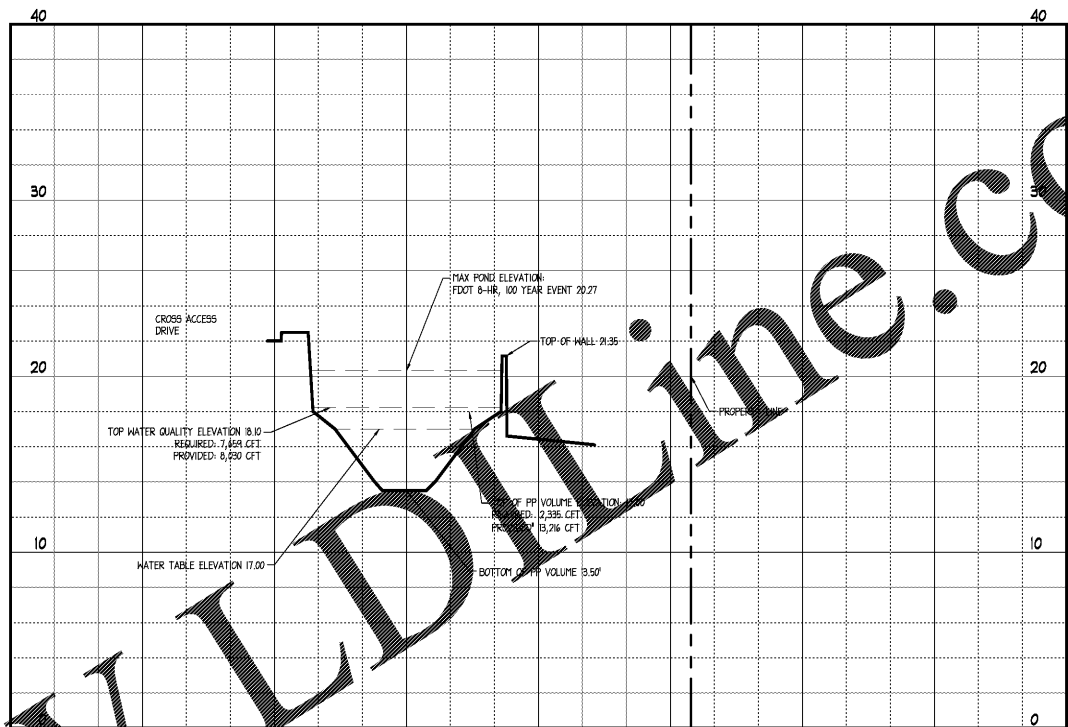


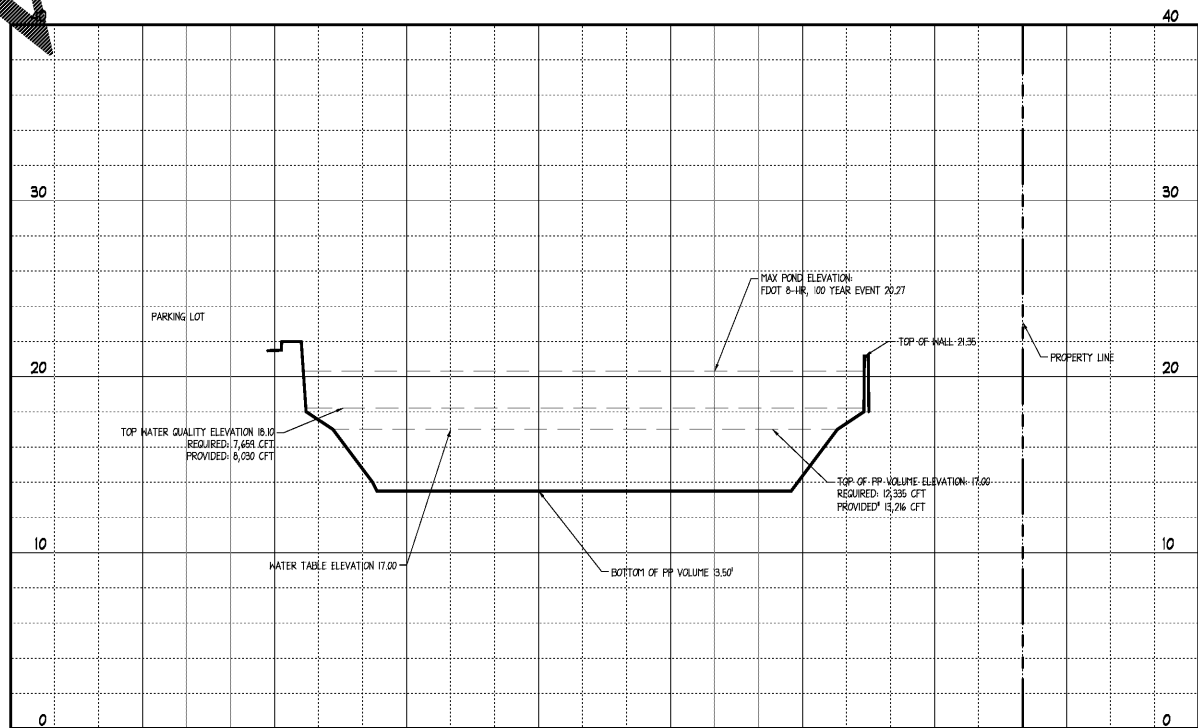
Order Plans @

CROSS SECTION A

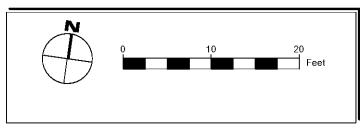


HORIZONTAL SCALE: 1"=20'  
VERTICAL SCALE: 1"=5'

CROSS SECTION B



HORIZONTAL SCALE: 1"=20'  
VERTICAL SCALE: 1"=5'



**Ingenium**  
PLANNING & ENGINEERING  
221 ROSWELL ST.  
SUITE 100  
ALPHARETTA, GA 30009  
770.457.9950  
WWW.INGENIUMTEAM.COM



THIS ITEM HAS BEEN DIGITALLY SIGNED AND SEALED BY JAMES D. NEFF, PE ON THE DATE ADJACENT TO THE SEAL. PRINTED COPIES OF THIS DOCUMENT ARE NOT CONSIDERED SIGNED AND SEALED AND THE SIGNATURE MUST BE VERIFIED ON ANY ELECTRONIC COPIES.

STATE OF FLORIDA  
AUTHORIZATION NUMBER  
8370  
PLANS PREPARED BY INGENIUM  
ENTERPRISES FORMERLY GRIMAL  
CRAWFORD

PANDA EXPRESS/CFT PLAZA  
3668 GULF BREEZE PARKWAY  
GULF BREEZE, FLORIDA



CLIENT:  
CFT NV DEVELOPMENTS,  
LLC  
1120 N. TOWN CENTER DR., SUITE  
150  
LAS VEGAS, NV 89144  
PHONE: (626) 799-8989

REVISION HISTORY

NO.	DESCRIPTION	DATE
1	ISSUE FOR BIDDING	11/2/2018

THE CIVIL ENGINEER REGULARLY UPDATES ELECTRONIC FILES DURING THE DEVELOPMENT OF A PROJECT AS A RESULT, THE DATA INCLUDED IN ANY CAD FILE OR DRAWING PRIOR TO ITS FINAL RELEASE DOES NOT NECESSARILY REFLECT THE COMPLETE SCOPE OR CONTENT AS SET FORTH IN THE CONTRACT. THE CONTENTS IN THESE FILES MAY THEREFORE BE PRELIMINARY, INCOMPLETE, WORK IN PROGRESS, AND SUBJECT TO CHANGE. FURTHERMORE, THE INFORMATION CONTAINED HEREIN IS THE SOLE PROPERTY OF THE CIVIL ENGINEER. THE ORIGINAL DRAWING REPRESENTED HEREIN BY THIS INFORMATION SHALL NOT BE LOANED, ALTERED, OR REPRODUCED IN ANY MANNER WITHOUT THE EXPRESS WRITTEN CONSENT OF THE CIVIL ENGINEER. THESE PLANS ARE SUBJECT TO FEDERAL COPYRIGHT LAWS. ANY USE OF THESE MATERIALS EXCEPTED WITHIN THE SCOPE OF THE CIVIL ENGINEER IS PROHIBITED.

PROJ # 170056  
DWG NAME 170056\_C05.DWG  
ISSUE DATE 11/2/2018  
PROJ MGR LF

CROSS SECTION

C05.2  
SHEET NUMBER

ISSUE FOR BID