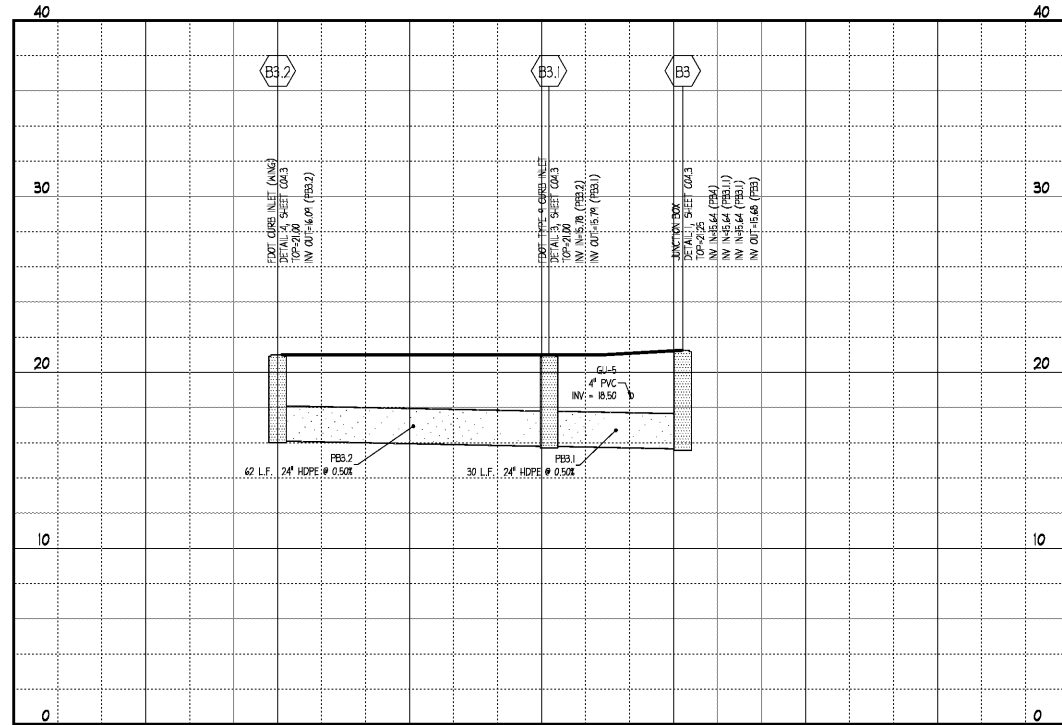
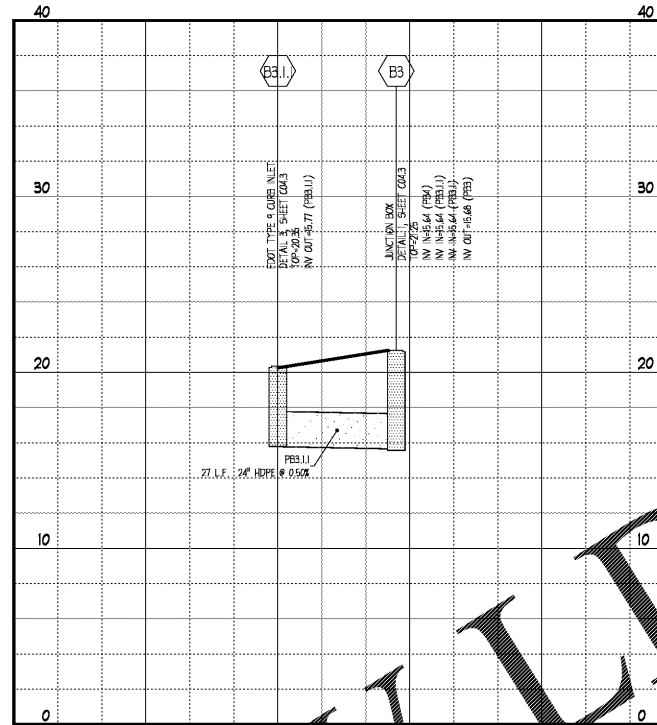


STORM PROFILE B3.2 - B3



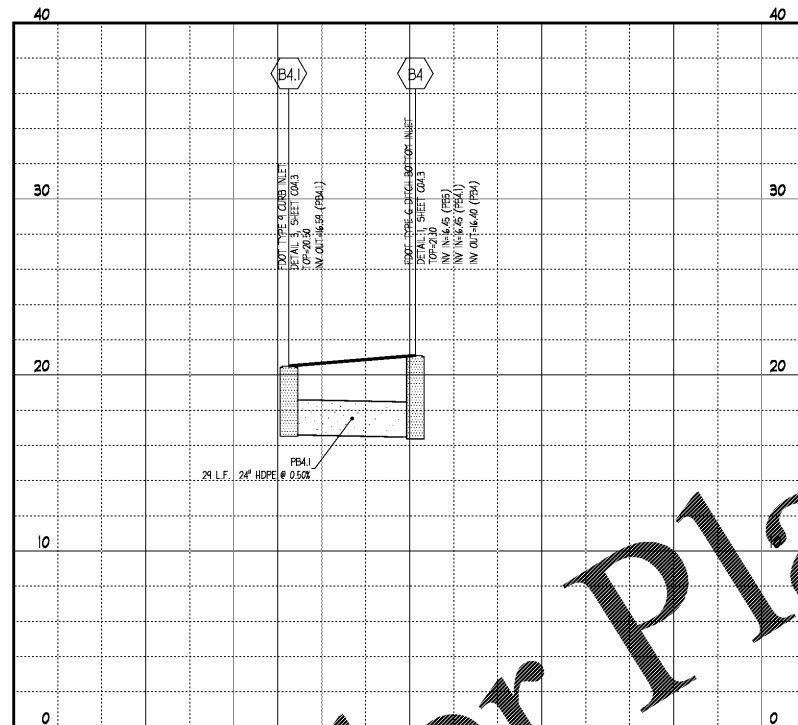
HORIZONTAL SCALE: 1"=20'
VERTICAL SCALE: 1"=5'

STORM PROFILE B3.1.1 - B3



HORIZONTAL SCALE: 1"=20'
VERTICAL SCALE: 1"=5'

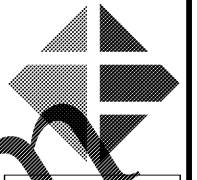
STORM PROFILE B4.1 - B4



HORIZONTAL SCALE: 1"=20'
VERTICAL SCALE: 1"=5'

PROFILE NOTES

- CONTROLLED BACK FILL TO BE PLACED IN 4" LOOSE LIFT AND COMPACTED TO 100% ASTM D698 PRIOR TO STORM AND SANITARY SEWER CONSTRUCTION. BACK FILL SHALL BE PLACED TO A MINIMUM OF 12" ABOVE THE CROWN ELEVATION OF THE PIPES.
- STORM DRAIN AND SANITARY SEWER LENGTHS ARE MEASURED FROM CENTER LINE OF STRUCTURE TO CENTERLINE OF STRUCTURE OR FACE OF HEADWALL.
- ALL PIPE LENGTHS SHOWN ARE ROUNDED TO THE NEAREST FOOT.
- ALL STORM DRAIN PIPING SHALL BE TRENCHED, BEDDED AND BACK FILLED ACCORDING WITH DETAIL 4 ON SHEET C04.2 UNLESS SPECIFICALLY NOTED OTHERWISE.
- ALL SANITARY SEWER PIPING SHALL BE TRENCHED, BEDDED AND BACK FILLED ACCORDING WITH DETAIL 4 ON SHEET C04.2 UNLESS SPECIFICALLY NOTED OTHERWISE.
- UNFORESEEN SUBSURFACE CONDITIONS SHALL BE BROUGHT TO THE OWNER'S AND ENGINEER'S ATTENTION IMMEDIATELY. IDENTIFICATION OF CORRECTIVE BEDDING MEASURES WITHOUT THE OWNER'S APPROVAL SHALL BE AT THE CONTRACTOR'S OWN RISK AND AT AN ADDITIONAL COST TO THE CONTRACTOR.
- EXISTING GRADES SHOWN ARE APPROXIMATE AND DO NOT PRESENT TOP SOIL REMOVAL, CLEARING, AND GRADING OPERATIONS. THE CONTRACTOR SHALL ASCERTAIN FOR HIMSELF THE EXTENT OF DISTURBANCE FOR THESE ACTIVITIES.
- THE CONTRACTOR SHALL REFER TO THE GEOTECHNICAL REPORT PREPARED BY THE OWNER FOR THE PROJECT. UNDER NO CONDITIONS, THE GEOTECHNICAL REPORT IS NOT A PART OF THE CONTRACT DOCUMENTS.
- EXCAVATION FOR STRUCTURES SHALL BE TAKEN AS A TRENCHING EXCAVATION WITHOUT FURTHER DESIGNATION.
- SEE SHEET C04.1 FOR GENERAL NOTES.



Ingenium
PLANNING & ENGINEERING
221 ROSWELL ST.
SUITE 100
ALPHARETTA, GA 30009
770.429.9550
WWW.INGENIUMTEAM.COM



THIS ITEM WAS DIGITALLY SIGNED AND SEALED BY JAMES D. NEFF, PE ON THE DATE ADJACENT TO THE SEAL.
PRINTED COPIES OF THIS DOCUMENT ARE NOT CONSIDERED SIGNED AND SEALED AND THE SIGNATURE MUST BE VERIFIED ON ANY ELECTRONIC COPIES.

STATE OF FLORIDA
AUTHORIZATION NUMBER
8570
PLANS PREPARED BY INGENIUM
ENTERPRISES FORMERLY GRITAIL
CRANFORD

PANDA EXPRESS/CFT PLAZA
3868 GULF BREEZE PARKWAY
GULF BREEZE, FLORIDA



CLIENT:
CFT NV DEVELOPMENTS, LLC
1120 N. TOWN CENTER DR., SUITE 150
LAS VEGAS, NV 89144
PHONE: (626) 799-8989

NO.	DATE	DESCRIPTION

THE CIVIL ENGINEER REGULARLY UPDATES ELECTRONIC FILES DURING THE DEVELOPMENT OF A PROJECT. AS A RESULT, THE DATA INCLUDED IN ANY CAD FILE OR DRAWING PRIOR TO ITS FINAL RELEASE DOES NOT NECESSARILY REFLECT THE COMPLETE SCOPE OR CONTENT AS DEFINED IN THE CONTRACT. THE CONTENTS IN THESE FILES MAY THEREFORE BE INCOMPLETE, INACCURATE, OR IN PROCESS AND SUBJECT TO CHANGE. FURTHERMORE, THE INFORMATION CONTAINED HEREIN IS THE SOLE PROPERTY OF THE CIVIL ENGINEER. THE ORIGINAL DESIGN REPRESENTED HEREIN BY THIS INFORMATION SHALL NOT BE COPIED, ALTERED, OR REPRODUCED IN ANY MANNER WITHOUT THE EXPRESS WRITTEN CONSENT OF THE CIVIL ENGINEER. THESE PLANS ARE SUBJECT TO FEDERAL COPYRIGHT LAWS. ANY USE OF SAME WITHOUT EXPRESS WRITTEN PERMISSION OF THE CIVIL ENGINEER IS PROHIBITED.

PROJ # 17006
ENGR NAME 17006-COLDING
ISSUE DATE 11/21/2008
PROJ MGR JEF

PROFILES III

C04.7
SHEET NUMBER

Order Plans @ WWW.LDILine.com

ISSUE FOR BID