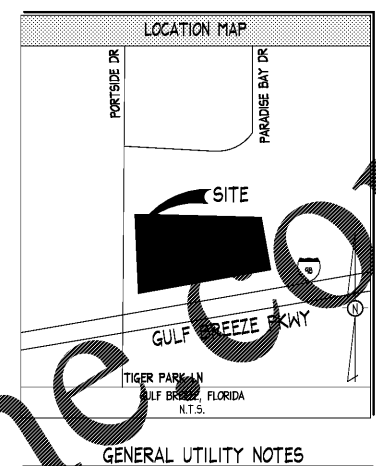


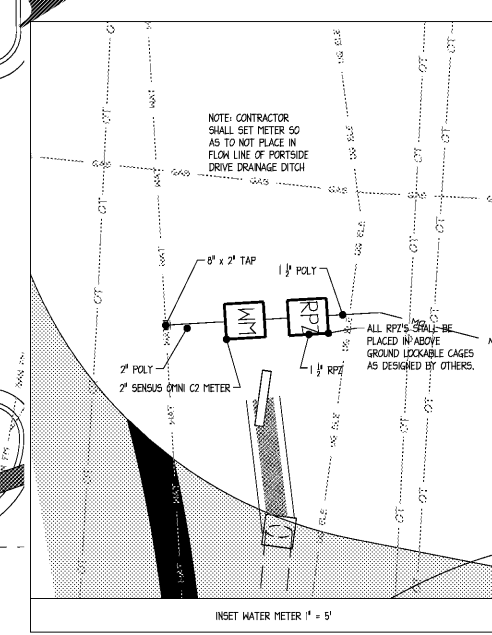
UTILITY LEGEND

UTILITY	LINE TYPE/SYMBOL	REFERENCE
DOMESTIC WATER LINE	— DW — DW	SEE PLANS
FIRE WATER LINE	— FW — FW	N/A
BUILDING FIRE SPRINKLER LINE	— FWS — FWS	N/A
IRRIGATION WATER LINE	— IRR — IRR	3/4" PVC
DOMESTIC WATER METER (WPM)	— WPM	1/2" DOM. WATER METER
IRRIGATION METER (IRM)	— IRM	3/4" IRR. METER
BACKFLOW PREVENTER (RFP)	— RFP	SEE PLANS
FIRE VAULT (DVC)	— DVC	N/A
DC BACKFLOW PREVENTER	— DDC	SEE PLANS
WATER TAP OR TEE	— TAP	SEE PLANS
GATE VALVE (GV)	— GV	N/A
THRUST BLOCK (TB)	— TB	N/A
FIRE HYDRANT (FH)	— FH	N/A
FIRE DEPARTMENT CONNECTION (FDC)	— FDC	N/A
SANITARY SEWER (SS)	— SS — SS	6" PVC
SANITARY MANHOLE (SSMH)	— SSMH	"
GENERAL CLEAN OUT (CO)	— CO	"
SAMPLING MANHOLE	— SMH	"
SANITARY STRUCTURE NUMBER	— SSN	SEE PLANS
UNDERGROUND ELECTRIC LINE-PRIMARY	— UEL-P	SEE PLANS
UNDERGROUND ELECTRIC LINE-SECONDARY	— UEL-S	SEE PLANS
POST INDICATOR VALVE	— PIV	N/A
SITE LIGHTING POLE	— SLP	SEE ARCHITECT PLANS
TRANSFORMER	— TR	SEE PLANS
FORCE MAIN	— FM — FM	SEE PLANS
UNDERGROUND TELEPHONE LINE	— UTL	(2) 4" CONDUIT
GENERAL UTILITY CONDUIT	— GU — GU	(2) 4" CONDUIT
GAS LINE	— G — G	"
GAS METERS	— GM	"
LIFT STATION	— LS	"

ALL UTILITIES SHALL BE INSTALLED ACCORDING TO UTILITY PROVIDERS AND JURISDICTION STANDARDS AND SPECIFICATIONS.



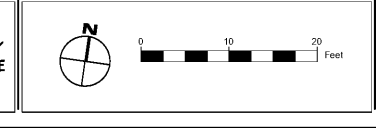
- GENERAL UTILITY NOTES**
- SEE SHEET COU1 FOR GENERAL NOTES.
 - SEE MEP PLANS FOR CONTINUATION OF ALL UTILITIES INTO BUILDING.
 - SANITARY LATERALS SHALL HAVE A MINIMUM FALL OF 1/8".
 - CONTRACTOR SHALL FIELD VERIFY ALL EXISTING UTILITIES AND THEIR LOCATIONS AND ELEVATIONS PRIOR TO STARTING CONSTRUCTION.
 - THE FINAL LOCATION OF FIRE HYDRANTS, VALVES, WATER LINES, BACKFLOW PREVENTERS, ETC. SHALL BE DETERMINED DURING CONSTRUCTION. NOTIFY THE ENGINEER OF ANY CHANGES TO LOCATION OR CONFIGURATION. NEPA CODES SHALL BE ADHERED TO.
 - THE CONTRACTOR SHALL CONTACT PUBLIC UTILITIES INSPECTIONS AT LEAST 72 HOURS PRIOR TO ANY CONSTRUCTION ACTIVITY.
 - ALL WORK TO BE DONE IN STRICT ACCORDANCE WITH LOCAL GOVERNING CODES.
 - UTILITY CONDUIT MATERIAL FOR ELECTRIC, TELEPHONE, AND CABLE SHALL BE INSTALLED PER UTILITY PROVIDER SPECIFICATIONS.
 - CONTRACTOR TO BUILD CONCRETE TRANSFORMER PAD AND INSTALL SCHEDULE 80 PVC CONDUIT AND PULL STRING WITH SHEEPING BENDS.



- CONTRACTOR SHALL COORDINATE AND VERIFY LOCATION OF ALL SIGNAGE WITH OWNER PRIOR TO CONSTRUCTION.
- CONTRACTOR SHALL COORDINATE AND ADJUST LOCATION OF LOOP DETECTORS TO AVOID UTILITY CONFLICTS PRIOR TO CONSTRUCTION.
- CONTRACTOR SHALL INSTALL GENERAL UTILITY CONDUITS TO PLANTERS AROUND BUILDING AND PATIO. SEE ARCHITECTURAL/MEP PLANS FOR CONTINUATION.
- CONTRACTOR SHALL PROTECT ALL ITEMS OUTSIDE LIMITS OF CONSTRUCTION UNLESS OTHERWISE NOTED IN THE CONSTRUCTION PLANS OR SPECIFICATIONS.

CONTRACTOR SHALL FIELD VERIFY ALL EXISTING UTILITIES (LOCATIONS AND ELEVATIONS) PRIOR TO STARTING CONSTRUCTION AND ALERT ENGINEER TO ANY DISCREPANCIES IMMEDIATELY.

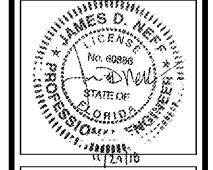
24-HOUR CONTACT:
MR. CHUNNI TAI
(562) 841-0538



ALL TAPS WILL BE DONE BY A FLORIDA LICENSED UNDERGROUND UTILITY CONTRACTOR WITH A MIDWAY WATER REPRESENTATIVE TO WITNESS THE PRESSURE TEST ON TAPPING SADDLE BEFORE TAP IS MADE.



Ingenium
PLANNING & ENGINEERING
221 ROSWELL ST.
SUITE 100
ALPHARETTA, GA 30009
770.451.8960
WWW.INGENIUMTEAM.COM



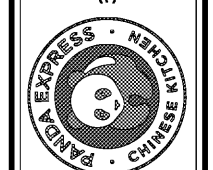
THIS ITEM HAS BEEN DIGITALLY SIGNED AND SEALED BY JAMES D. NEFF, PE ON THE DATE ADJACENT TO THE SEAL.

PRINTED COPIES OF THIS DOCUMENT ARE NOT CONSIDERED SIGNED AND SEALED AND THE SIGNATURE MUST BE VERIFIED ON ANY ELECTRONIC COPIES.

STATE OF FLORIDA
AUTHORIZATION NUMBER
8570

PLANS PREPARED BY INGENIUM ENTERPRISES FORMERLY GRIMAL CRAWFORD

PANDA EXPRESS/CT PLAZA
3866 GULF BREEZE PARKWAY
GULF BREEZE, FLORIDA



CLIENT:
CPT NV DEVELOPMENTS, LLC
1120 N. TOWN CENTER DR., SUITE 150
LAS VEGAS, NV 89144
PHONE: (626) 799-8899

REVISION HISTORY

NO.	DESCRIPTION
1	ISSUE FOR PERMITS
2	ISSUE FOR PERMITS
3	ISSUE FOR PERMITS
4	ISSUE FOR PERMITS
5	ISSUE FOR PERMITS
6	ISSUE FOR PERMITS
7	ISSUE FOR PERMITS
8	ISSUE FOR PERMITS
9	ISSUE FOR PERMITS
10	ISSUE FOR PERMITS

THE CIVIL ENGINEER REGULARLY UPDATES ELECTRONIC FILES DURING THE DEVELOPMENT OF A PROJECT. AS A RESULT, THE DATA INCLUDED IN ANY CAD FILE OR DRAWING PRIOR TO ITS FINAL RELEASE DOES NOT NECESSARILY REFLECT THE COMPLETE SCOPE OR CONTENT AS OF THE DATE OF THE CONTRACT. THE CONTENTS IN THESE FILES MAY THEREFORE BE INCOMPLETE, INACCURATE, OR OTHERWISE SUBJECT TO CHANGE. FURTHERMORE, THE INFORMATION CONTAINED HEREIN IS THE SOLE PROPERTY OF THE CIVIL ENGINEER. THE ORIGINAL DESIGN REPRESENTED HEREIN BY THIS INFORMATION SHALL NOT BE USED, ALTERED, OR REPRODUCED IN ANY MANNER WITHOUT THE EXPRESS WRITTEN CONSENT OF THE CIVIL ENGINEER. THESE PLANS ARE SUBJECT TO FEDERAL COPYRIGHT LAWS. ANY USE OF SAME WITHOUT EXPRESS WRITTEN PERMISSION OF THE CIVIL ENGINEER IS PROHIBITED.

PROJ # 17006
DWG NAME 17006_COLDING
ISSUE DATE 11/21/2020
PROJ MGR JF

BUILDING UTILITY DETAIL PLAN

CO4.1
SHEET NUMBER

Order Plans @