

SANITARY STRUCTURE TABLE				
STRUCTURE NAME	STRUCTURE TYPE	RIM ELEVATION	INVERT IN	INVERT OUT
LS1	LIFT STATION	22.00	3.64 (P50)	
50	6" CLEANOUT DETAIL 5, SHEET C04.2	21.65	14.41 (P51)	14.54 (P50)
51	SANITARY SEWER MANHOLE	21.35	5.53 (P52)	5.26 (P51)
51.1	6" CLEANOUT STUB OUT FOR FUTURE CFT PAD	22.00		5.79 (P51.1)
52	6" CLEANOUT DETAIL 5, SHEET C04.2	21.20	6.30 (P53)	6.25 (P52)
53	6" CLEANOUT DETAIL 5, SHEET C04.2	21.25	17.22 (P54)	17.16 (P53)
54	6" CLEANOUT DETAIL 5, SHEET C04.2	22.20	8.22 (P54.1) 8.22 (P55)	8.22 (P54)
54.1	GREASE TRAP DETAIL 1, SHEET C04.4	22.50		
54.1-IN	GREASE TRAP IN	22.00	8.50 (P54.2)	
54.1-OUT	GREASE TRAP OUT	22.10		8.30 (P54.1)
54.2	6" CLEANOUT DETAIL 5, SHEET C04.2	21.65	18.70 (P54.3)	18.70 (P54.2)
54.3	BUILDING STUB OUT	22.70		18.99 (P54.3)
55	6" CLEANOUT DETAIL 5, SHEET C04.2	22.65	8.32 (P56)	8.39 (P55)
56	6" CLEANOUT DETAIL 5, SHEET C04.2	22.65	8.79 (P57)	8.76 (P56)
57	BUILDING STUB OUT	22.70		18.92 (P57)

SANITARY PIPE TABLE				
NAME	SIZE	LENGTH	SLOPE	MATERIAL
P50	6"	39'	2.00%	PVC
P51	6"	40'	2.00%	PVC
P51.1	6"	13'	2.00%	PVC
P52	6"	36'	2.00%	PVC
P53	6"	43'	2.00%	PVC
P54	6"	50'	2.00%	PVC
P54.1	6"	4'	2.00%	PVC
P54.2	6"	10'	2.00%	PVC
P54.3	6"	15'	2.00%	PVC
P55	6"	9'	2.00%	PVC
P56	6"	22'	2.00%	PVC
P57	6"	6'	2.00%	PVC

STORM PIPE TABLE				
NAME	SIZE	LENGTH	SLOPE	MATERIAL
PA1	24"	39'	2.50%	RCP
PA2	24"	23'	0.50%	HDPE
PA3	24"	237'	0.50%	HDPE
PA4	24"	64'	0.52%	HDPE
PA5	24"	37'	0.44%	HDPE
PE1	24"	27'	2.00%	RCP
PE2	24"	106'	0.50%	HDPE
PE3	24"	44'	0.50%	HDPE
PE3.1	24"	30'	0.50%	HDPE
PE3.1.1	24"	27'	0.50%	HDPE
PE3.2	24"	62'	0.50%	HDPE
PE4	24"	53'	0.50%	HDPE
PE4.1	24"	29'	0.50%	HDPE
PE5	24"	30'	0.50%	HDPE
PE6	24"	60'	0.50%	HDPE
PE7	18"	20'	0.50%	HDPE

UTILITY LEGEND		
UTILITY	LINE TYPE/SYMBOL	REFERENCE
DOMESTIC WATER LINE	— DW — DW —	SEE PLANS
FIRE WATER LINE	— FW — FW —	N/A
BUILDING FIRE SPRINKLER LINE	— FWS — FWS —	N/A
IRRIGATION WATER LINE	— IRR — IRR —	3/4" PVC
DOMESTIC WATER METER (M1)	— M1 —	1 1/2" DOM. WATER METER
IRRIGATION METER (IRR)	— IRR —	3/4" IRR. METER
BACKFLOW PREVENTER (RFP)	— RFP —	SEE PLANS
FIRE VAULT (DDC)	— DDC —	N/A
DC BACKFLOW PREVENTER	— DC —	SEE PLANS
WATER TAP OR TEE	— T —	SEE PLANS
GATE VALVE (GV)	— GV —	N/A
THRUST BLOCK (TB)	— TB —	N/A
FIRE HYDRANT (FH)	— FH —	N/A
FIRE DEPARTMENT CONNECTION (FDC)	— FDC —	N/A
SANITARY SEWER (SS)	— SS — SS —	6" PVC
SANITARY MANHOLE (SSM)	— SSM —	"
GENERAL CLEAN OUT (GO)	— GO —	"
SAMPLING MANHOLE	— SM —	"
SANITARY STRUCTURE NUMBER	— SS# —	SEE PLANS
UNDERGROUND ELECTRIC LINE-PRIMARY	— UGE-P — UGE-P —	SEE PLANS
UNDERGROUND ELECTRIC LINE-SECONDARY	— UGE-S — UGE-S —	SEE PLANS
POST INDICATOR VALVE	— PIV —	N/A
SITE LIGHTING POLE	— SLP —	SEE ARCHITECT PLANS
TRANSFORMER	— TR —	"
FORCED AIR	— FA — FA —	SEE PLANS
UNDERGROUND TELEPHONE LINE	— UGT — UGT —	(2) 4" CONDUIT
GENERAL UTILITY CONDUIT	— GU — GU —	(2) 4" CONDUIT
GAS LINE	— G — G —	"
GAS METERS	— GM —	"
LIFT STATION	— LS —	"

MIDWAY UTILITY NOTES

- CONTRACTOR WILL PROVIDE ALL TAPS, METERS, AND RFP BACKFLOW PREVENTERS FOR PROJECT. BACKFLOW PREVENTERS WILL NEED TO ALSO BE INSPECTED AT CONTRACTORS EXPENSE. ALL WATER TAPS ON EXISTING MAIN WILL BE PRESSURE TESTED AT 50 P.S.I. PRIOR TO MAKING TAP. METERS WILL BE SENSUS LOG THAT AGAIN WILL BE PROVIDED BY CONTRACTOR.
- RFP BACKFLOWS WILL NEED TO BE INSTALLED 12" TO 36" ABOVE FINISHED GRADE. LARGE "CARSON" METER BOXES WITH THE HOLE IN THE LID FOR ELECTRONIC READER WILL BE PROVIDED BY CONTRACTOR.

GENERAL UTILITY NOTES

- SEE SHEET C01 FOR GENERAL NOTES.
- SEE MEP PLANS FOR CONTINUATION OF ALL UTILITIES INTO BUILDING.
- SANITARY LATERALS SHALL HAVE A MINIMUM FALL OF 1.00%.
- CONTRACTOR SHALL FIELD VERIFY ALL EXISTING UTILITIES AND THEIR LOCATIONS AND ELEVATIONS PRIOR TO STARTING CONSTRUCTION.
- THE FINAL LOCATION OF FIRE HYDRANTS, VALVES, WATER LINES, BACKFLOW PREVENTERS, ETC. SHALL BE DETERMINED DURING CONSTRUCTION. NOTIFY THE ENGINEER OF ANY CHANGES TO LOCATION OR CONFIGURATION. NFPA CODES SHALL BE ADHERED TO.
- THE CONTRACTOR SHALL CONTACT PUBLIC UTILITIES INSPECTIONS AT LEAST 72 HOURS PRIOR TO ANY CONSTRUCTION ACTIVITY.
- ALL WORK TO BE DONE IN STRICT ACCORDANCE WITH LOCAL GOVERNING CODES.
- UTILITY CONDUIT MATERIAL FOR ELECTRIC, TELEPHONE, AND CABLE SHALL BE INSTALLED PER UTILITY PROVIDER SPECIFICATIONS.
- CONTRACTOR TO BUILD CONCRETE TRANSFORMER PAD AND INSTALL SCHEDULE 80 PVC CONDUIT AND PULL STRING WITH SNEEPING BENDS.

CONTRACTOR SHALL COORDINATE AND VERIFY LOCATION OF ALL SIGNAGE WITH OWNER PRIOR TO CONSTRUCTION.

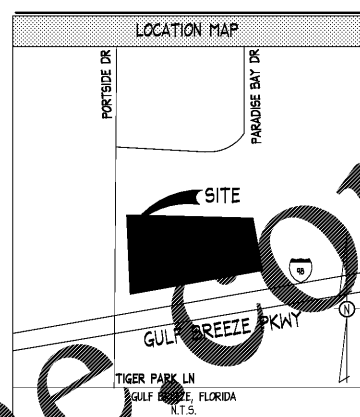
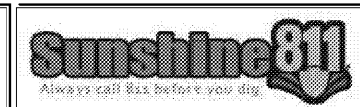
CONTRACTOR SHALL COORDINATE AND ADJUST LOCATION OF LOOP DETECTORS TO AVOID UTILITY CONFLICTS PRIOR TO CONSTRUCTION.

CONTRACTOR SHALL INSTALL GENERAL UTILITY CONDUITS TO PLANTERS AROUND BUILDING AND PATIO. SEE ARCHITECTURAL/MEP PLANS FOR CONTINUATION.

CONTRACTOR SHALL PROTECT ALL ITEMS OUTSIDE LIMITS OF CONSTRUCTION UNLESS OTHERWISE NOTED IN THE CONSTRUCTION PLANS OR SPECIFICATIONS.

CONTRACTOR SHALL FIELD VERIFY ALL EXISTING UTILITIES (LOCATIONS AND ELEVATIONS) PRIOR TO STARTING CONSTRUCTION AND ALERT ENGINEER TO ANY DISCREPANCIES IMMEDIATELY.

24-HOUR CONTACT:
MR. CHUNNI TAI
(562) 841-0538



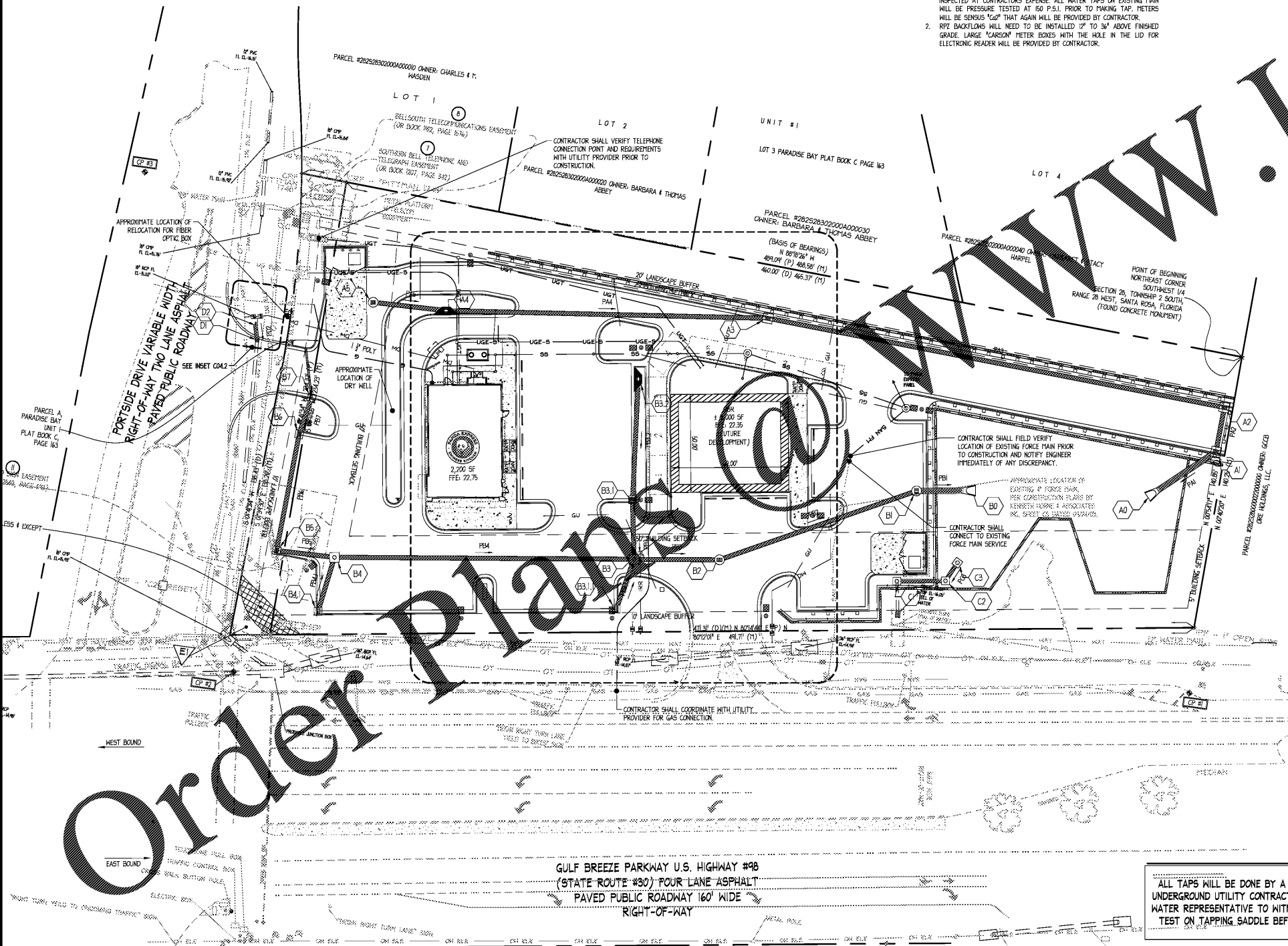
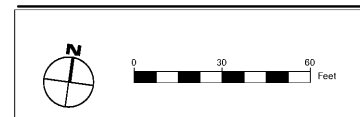
UTILITY INFORMATION			
	WATER	SEWER	ADDITIONAL NOTES
LINE EXTENSION TO PROPERTY LINE	●	●	NA
PIPING FROM PROPERTY LINE TO BUILDING	●	●	NA
TAPPING THE MAIN	●	●	NA
WATER VAULT	●	●	NA
WATER (METER) PIT	●	●	NA
DOMESTIC METER	●	●	NA
FIRE METER	●	●	RECLAIMED WATER
IRRIGATION METER	●	●	NA
DOMESTIC BFP	●	●	NA
FIRE BFP	●	●	NA
IRRIGATION BFP	●	●	NA
OBTAINING EASEMENTS	●	●	NA
OBTAINING ROW WORK PERMITS	●	●	NA

SANITARY SEWER			
	WATER	SEWER	ADDITIONAL NOTES
TAPPING OF THE MAIN	●	●	NA
LINE EXTENSION SERVICE LATERALS (INSIDE PROPERTY)	●	●	NA
OBTAINING EASEMENTS	●	●	NA
OBTAINING ROW PERMIT	●	●	NA

ELECTRIC			
	WATER	SEWER	ADDITIONAL NOTES
PRIMARY CONDUIT	●	●	NA
PRIMARY CABLE	●	●	NA
PRIMARY FINAL CONNECTION	●	●	NA
TRANSFORMER	●	●	NA
TRANSFORMER PAD	●	●	NA
POLE	●	●	NA
SECONDARY CABLE	●	●	NA
SECONDARY CONDUIT	●	●	NA
SECONDARY FINAL CONNECTION	●	●	NA
METER	●	●	NA
CT CABINET	●	●	NA
CT METER CONDUIT	●	●	NA
SOCKET	●	●	NA
OBTAINING EASEMENTS	●	●	NA
ROW WORK PERMITS	●	●	NA

TELEPHONE			
	WATER	SEWER	ADDITIONAL NOTES
CONDUIT	●	●	NA
TRENCH & BACKFILL	●	●	NA
CABLE & WIRE	●	●	NA
OBTAINING EASEMENTS	●	●	NA
ROW WORK PERMITS	●	●	NA

GAS			
	WATER	SEWER	ADDITIONAL NOTES
TAP	●	●	NA
PIPING	●	●	NA
TRENCH AND BACKFILL	●	●	NA
METER	●	●	NA
REGULATOR	●	●	NA
OBTAINING EASEMENTS	●	●	NA
ROW WORK PERMITS	●	●	NA



ALL TAPS WILL BE DONE BY A FLORIDA LICENSED UNDERGROUND UTILITY CONTRACTOR WITH A MIDWAY WATER REPRESENTATIVE TO WITNESS THE PRESSURE TEST ON TAPPING SADDLE BEFORE TAP IS MADE.

Ingenium
PLANNING & ENGINEERING
221 ROSWELL ST.
SUITE 100
ALPHARETTA, GA 30009
770.477.8850
WWW.INGENIUMTEAM.COM



THIS ITEM HAS BEEN DIGITALLY SIGNED AND SEALED BY JAMES D. NEFF, PE ON THE DATE ADJACENT TO THE SEAL.
PRINTED COPIES OF THIS DOCUMENT ARE NOT CONSIDERED SIGNED AND SEALED AND THE SIGNATURE MUST BE VERIFIED ON ANY ELECTRONIC COPIES.

STATE OF FLORIDA
AUTHORIZATION NUMBER
8370
PLANS PREPARED BY INGENIUM ENTERPRISES FORMERLY GRIMAL CRANFORD

PANDA EXPRESS/CT PLAZA
3668 GULF BREEZE PARKWAY
GULF BREEZE, FLORIDA



CLIENT:
CFT NV DEVELOPMENTS, LLC
1120 N. TOWN CENTER DR., SUITE 750
LAS VEGAS, NV 89144
PHONE: (626) 799-8989

REVISION HISTORY	
NO.	DESCRIPTION

THE CIVIL ENGINEER REGULARLY UPDATES ELECTRONIC FILES DURING THE DEVELOPMENT OF A PROJECT. AS A RESULT, THE DATA INCLUDED IN ANY CAD FILE OR DRAWING PRIOR TO ITS FINAL RELEASE DOES NOT NECESSARILY REFLECT THE COMPLETE SCOPE OR CONTENT AS DEFINED IN THE CONTRACT. THE CONTENTS IN THESE FILES MAY THEREFORE BE PRELIMINARY, INCOMPLETE, MADE IN PROGRESS, AND SUBJECT TO CHANGE. FURTHERMORE, THE INFORMATION CONTAINED HEREIN IS THE SOLE PROPERTY OF THE CIVIL ENGINEER. THE ORIGINAL DESIGN REPRESENTED HEREIN IS THE SOLE PROPERTY OF THE CIVIL ENGINEER. THESE PLANS ARE SUBJECT TO FEDERAL COPYRIGHT LAWS. ANY USE OF SAME WITHOUT EXPRESS WRITTEN PERMISSION OF THE CIVIL ENGINEER IS PROHIBITED.

PROJ # 170056
CADD NAME 170056.CADD
ISSUE DATE 07/21/2016
PROJ TIER 01
UTILITY PLAN
C04.0
SHEET NUMBER

Order Plans

FOR BIDDING