

**DEMOLITION LEGEND**

1. PROTECT ALL UTILITIES PRIOR TO CONSTRUCTION. SEE GENERAL DEMOLITION NOTE #1. CONTRACTOR SHALL ENSURE THE SAFETY OF ALL ITEMS IDENTIFIED ON THIS PLAN. CONTRACTOR SHALL BE RESPONSIBLE FOR OBTAINING ALL NECESSARY PERMITS AND APPROVALS PRIOR TO CONSTRUCTION. CONTRACTOR SHALL BE RESPONSIBLE FOR OBTAINING ALL NECESSARY PERMITS AND APPROVALS PRIOR TO CONSTRUCTION.
2. REMOVE EXISTING CONCRETE PAD, SIDEWALK, CURB AND GUTTER AND ASSOCIATED APPURTENANCES INCLUDING, BUT NOT LIMITED TO, REINFORCEMENT AND STONE BASE.
3. REMOVE EXISTING BUILDING AND ASSOCIATED APPURTENANCES INCLUDING, BUT NOT LIMITED TO, WALLS, FINISHES, CANOPY, ROOF, ROOF-TOP MECHANICAL EQUIPMENT, FOUNDATION, FOOTINGS, UTILITIES WITHIN SUBS, FRENCH DRAINS, STAIRS, STAIRS, CONCRETE PARKING AND STONE BASE. CONTRACTOR RESPONSIBLE FOR OBTAINING ALL NECESSARY PERMITS AND APPROVALS PRIOR TO CONSTRUCTION. CONTRACTOR SHALL BE RESPONSIBLE FOR OBTAINING ALL NECESSARY PERMITS AND APPROVALS PRIOR TO CONSTRUCTION.
4. REMOVE EXISTING CRUSHED GRAVEL AND ASSOCIATED APPURTENANCES INCLUDING, BUT NOT LIMITED TO, REINFORCEMENT AND STONE BASE.
5. REMOVE SIGN AND ALL ASSOCIATED APPURTENANCES.
6. CONTRACTOR SHALL REMOVE UNDERGROUND GASOLINE STORAGE TANKS INCLUDING ALL PIPING, BASE, AND ALL ASSOCIATED APPURTENANCES. TANKS SHALL BE REMOVED PER EPA AND FDEP STANDARDS.
7. CONTRACTOR TO REMOVE GAS PUMP ISLANDS, CANOPY, CANOPY SUPPORTS, AND ALL UNDERGROUND UTILITIES AND ASSOCIATED APPURTENANCES.
8. CONTRACTOR TO PLUG HOLE IN STRUCTURE WHERE STORM PIPE REMOVED WITH NON-SHRINKING GROUT.
9. REMOVE EXISTING GAS LINE AND METER. SEE GENERAL DEMOLITION NOTE #3.
10. REMOVE EXISTING STORM DRAIN STRUCTURE AND ALL ASSOCIATED APPURTENANCES INCLUDING PIPE TO LIMITS SHOWN. THE CONTRACTOR SHALL FIELD VERIFY THAT CONNECTED PIPES CONTINUE TO FUNCTION AS INTENDED AND CONTACT ENGINEER IF ANY DISCREPANCIES EXIST - TO LIMITS SHOWN.
11. CONTRACTOR TO REMOVE DUMPSTER PAD AND SCREEN FENCING.
12. DISCONNECT ELECTRIC AND TELEPHONE SERVICE TO EXISTING BUILDING AND COORDINATE WITH UTILITY PROVIDER. SEE NOTE #3.
13. CONTRACTOR TO REMOVE GREASE TRAPS, CLEAN-OUTS, ASSOCIATED PIPING TO EXISTING LIFT STATION.
14. CONTRACTOR TO REMOVE EXISTING LIFT STATION, CONTROL PANEL, AND UNDERGROUND UTILITIES (ELECTRICAL, WATER, ETC.) BUT PROTECT & LEAVE FORCE MAIN IN PLACE TO CONNECT TO FUTURE LIFT STATION.
15. REMOVE EXISTING TREE AREA INCLUDING TREES AND STUMPS.
16. RELOCATE FIBER OPTIC BOX. CONTRACTOR SHALL COORDINATE RELOCATION WITH UTILITY. SEE NOTE #3 IN GENERAL DEMOLITION NOTES.
17. CONTRACTOR SHALL CAP & ABANDON EXISTING WATER METERS AND SERVICE LINES AT RIGHT-OF-WAY PER JURISDICTIONAL STANDARDS. SEE DEMOLITION NOTE #3.

**GENERAL DEMOLITION NOTES**

1. ALL ITEMS TO BE PROTECTED SHALL BE PROTECTED THROUGHOUT ALL THE PHASES OF CONSTRUCTION UNTIL FINAL ACCEPTANCE BY CITY OF GULF BREEZE/SANTA ROSA COUNTY IS RECEIVED.
2. CONTRACTOR TO COMPLY WITH ALL LOCAL, STATE, AND FEDERAL REQUIREMENTS WITH ALL DEMOLITION ACTIVITIES. IF ADDITIONAL ACTIVITIES ARE REQUIRED FOR HAZARDOUS WASTE REMOVAL INCLUDING BUT NOT LIMITED TO ASBESTOS, SEPTIC FIELDS, LEAD, PCB, TCE, OR OTHER WASTE OR CONTAMINANT, IT IS THE CONTRACTOR'S RESPONSIBILITY TO COMPLY WITH ALL APPLICABLE PERMITS AND APPROVALS PRIOR TO CONSTRUCTION.
3. CONTRACTOR SHALL COORDINATE WITH ALL UTILITY COMPANIES CONCERNING THE ABANDONMENT, RELOCATION AND/OR DEMOLITION OF UTILITIES PRIOR TO CONSTRUCTION. NO WORK IS TO BE PERFORMED ON LIVE LINES UNLESS APPROVED IN WRITING BY THE UTILITY IN ALL CASES. A REPRESENTATIVE FROM THE UTILITY SHALL BE PRESENT FOR INITIAL ABANDONMENT AND/OR LIVE CUTS. CONTRACTOR SHALL USE EXTREME CAUTION WHEN WORKING NEAR UTILITIES AND SHALL PROTECT THEM AT ALL TIMES.
4. CONTRACTOR IS RESPONSIBLE FOR PROCUREMENT OF ALL NECESSARY PERMITS.
5. DEMOLITION SHALL INCLUDE ALL LABOR, EQUIPMENT, MATERIALS, HAULING, PERMITTING, FEES, AND COORDINATION WITH PUBLIC AND/OR PRIVATE UTILITY REQUIRED TO REMOVE AND PROPERLY DISPOSE OF ANY ITEM NECESSARY TO PERFORM THE REQUIRED DEMOLITION AS INDICATED ON THE PLANS.
6. RELOCATION SHALL INCLUDE ALL LABOR, EQUIPMENT, MATERIALS, HAULING, PERMITTING, FEES, AND COORDINATION WITH PUBLIC AND/OR PRIVATE UTILITY REQUIRED TO REMOVE, RELOCATE, AND INSTALL NEW ITEMS AS INDICATED ON THE PLANS.
7. ABANDONMENT SHALL INCLUDE ALL LABOR, EQUIPMENT, MATERIALS, PERMITTING, FEES, AND COORDINATION WITH PUBLIC AND/OR PRIVATE UTILITY REQUIRED TO ADEQUATELY ABANDON ITEMS AS INDICATED ON THE PLANS.
8. THE CONTRACTOR SHALL COORDINATE ALL TREE AND LANDSCAPE REMOVAL WITH THE LANDSCAPE PLANS. ANY DISCREPANCY BETWEEN THIS DEMOLITION PLAN AND THE LANDSCAPE PLANS SHALL BE BROUGHT TO THE ATTENTION OF THE OWNER IMMEDIATELY.
9. THE CONTRACTOR IS FULLY AND COMPLETELY RESPONSIBLE FOR LOCATION, VERIFICATION, PROTECTION, STORAGE, MAINTENANCE, DEMOLITION, REMOVAL, RELOCATION OR ALTERATION OF ALL EXISTING SITE UTILITIES, SITE IMPROVEMENTS, STRUCTURES, OR CONSTRUCTION ELEMENTS AS REQUIRED TO COMPLETE THE WORK THAT ARE SHOWN ON THE PLANS AND OR THAT ARE OBSERVABLE IN THE FIELD, WHETHER CONSPICUOUSLY VISIBLE OR NOT. THE CONTRACTOR SHALL VISIT THE SITE AND BECOME THOROUGHLY FAMILIAR WITH ALL EXISTING IMPROVEMENTS, UTILITIES, AND SITE CONDITIONS PRIOR TO BIDDING AND CONSTRUCTION.
10. THIS DEMOLITION PLAN IS FOR GENERAL REFERENCE ONLY. ITEMS NOT DEPICTED ON THESE PLANS MAY BE REQUIRED TO BE PROTECTED, REMOVED, OR RELOCATED. THE CONTRACTOR IS RESPONSIBLE FOR FIELD VERIFYING THE LOCATIONS OF ALL EXISTING STRUCTURES, UTILITIES, AND APPURTENANCES WITHIN THE LIMITS OF CONSTRUCTION. DEMOLITION INCLUDES BUT IS NOT LIMITED TO THE ITEMS SHOWN ON THIS PLAN.
11. THE CONTRACTOR SHALL USE EXTREME CAUTION WHEN WORKING NEAR ANY EXISTING UNDERGROUND OR OVERHEAD UTILITIES.
12. SHALLOU DIMENSIONS SHOWN ARE APPROXIMATE. CONTRACTOR SHALL FIELD VERIFY AND CONSULT ENGINEER TO VERIFY PRIOR TO CONSTRUCTION.
13. CONTRACTOR SHALL PROVIDE DEMATERING AS REQUIRED.

CONTRACTOR RESPONSIBLE FOR OBTAINING ANY ASBESTOS RELATED PERMIT AND APPROVALS PRIOR TO ANY STRUCTURE DEMOLITION.

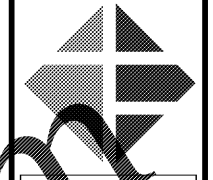
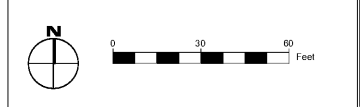
CONTRACTOR SHALL PROTECT ALL ITEMS OUTSIDE LIMITS OF CONSTRUCTION UNLESS OTHERWISE NOTED IN THE CONSTRUCTION PLANS OR SPECIFICATIONS.

CONTRACTOR SHALL FIELD VERIFY ALL EXISTING UTILITIES (LOCATIONS AND ELEVATIONS) PRIOR TO STARTING CONSTRUCTION AND ALERT ENGINEER TO ANY DISCREPANCIES IMMEDIATELY.

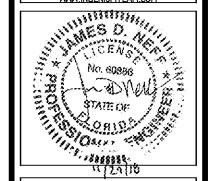
24-HOUR CONTACT:  
MR. CHUNNI TAI  
(562) 841-0538



CONTRACTOR RESPONSIBLE FOR OBTAINING ANY REQUIRED UTILITY DISCONNECT LETTER OR APPROVAL PRIOR TO ANY STRUCTURE DEMOLITION ON SITE.



**Ingenium**  
PLANNING & ENGINEERING  
221 ROSWELL ST.  
SUITE 100  
ALPHARETTA, GA 30009  
770.457.0660  
WWW.INGENIUMTEAM.COM



THIS ITEM HAS BEEN DIGITALLY SIGNED AND SEALED BY JAMES D. NEFF, PE ON THE DATE ADJACENT TO THE SEAL.  
PRINTED COPIES OF THIS DOCUMENT ARE NOT CONSIDERED SIGNED AND SEALED AND THE SIGNATURE MUST BE VERIFIED ON ANY ELECTRONIC COPIES.

STATE OF FLORIDA  
AUTHORIZATION NUMBER  
8570  
PLANS PREPARED BY INGENIUM  
ENTERPRISES FORMERLY GRIMAL  
CRAWFORD

PANDA EXPRESS/CFT PLAZA  
3868 GULF BREEZE PARKWAY  
GULF BREEZE, FLORIDA



PLANS FOR:

CLIENT:  
CFT NV DEVELOPMENTS, LLC  
1120 N. TOWN CENTER DR., SUITE 150  
LAS VEGAS, NV 89144  
PHONE: (626) 799-8989

**REVISION HISTORY**

NO.	DATE	DESCRIPTION

THE CIVIL ENGINEER REGULARLY UPDATES ELECTRONIC FILES DURING THE DEVELOPMENT OF A PROJECT. AS A RESULT, THE DATA INCLUDED IN ANY CAD FILE OR DRAWING PRIOR TO ITS FINAL RELEASE DOES NOT NECESSARILY REFLECT THE COMPLETE SCOPE OR CONTENT AS PROVIDED IN THE CONTRACT. THE CONTENTS IN THESE FILES MAY THEREFORE BE PRELIMINARY, INCOMPLETE, WORK IN PROGRESS, AND SUBJECT TO CHANGE. FURTHERMORE, THE INFORMATION CONTAINED HEREIN IS THE SOLE PROPERTY OF THE CIVIL ENGINEER. THE ORIGINAL DESIGN REPRESENTED HEREIN BY THIS INFORMATION SHALL NOT BE REPRODUCED, ALTERED, OR REPRODUCED IN ANY MANNER WITHOUT THE EXPRESS WRITTEN CONSENT OF THE CIVIL ENGINEER. THESE PLANS ARE SUBJECT TO FEDERAL COPYRIGHT LAWS. ANY USE OF THESE WITHOUT EXPRESS WRITTEN PERMISSION OF THE CIVIL ENGINEER IS PROHIBITED.

PROJ # 17006  
DWG NAME 17006\_C02.DWG  
ISSUE DATE 11/21/2018  
PROJ PGR # EF

DEMOLITION PLAN  
C02.2  
SHEET NUMBER

Order Plans @

SCALE FOR BID