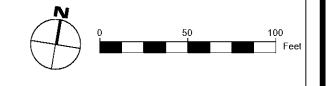
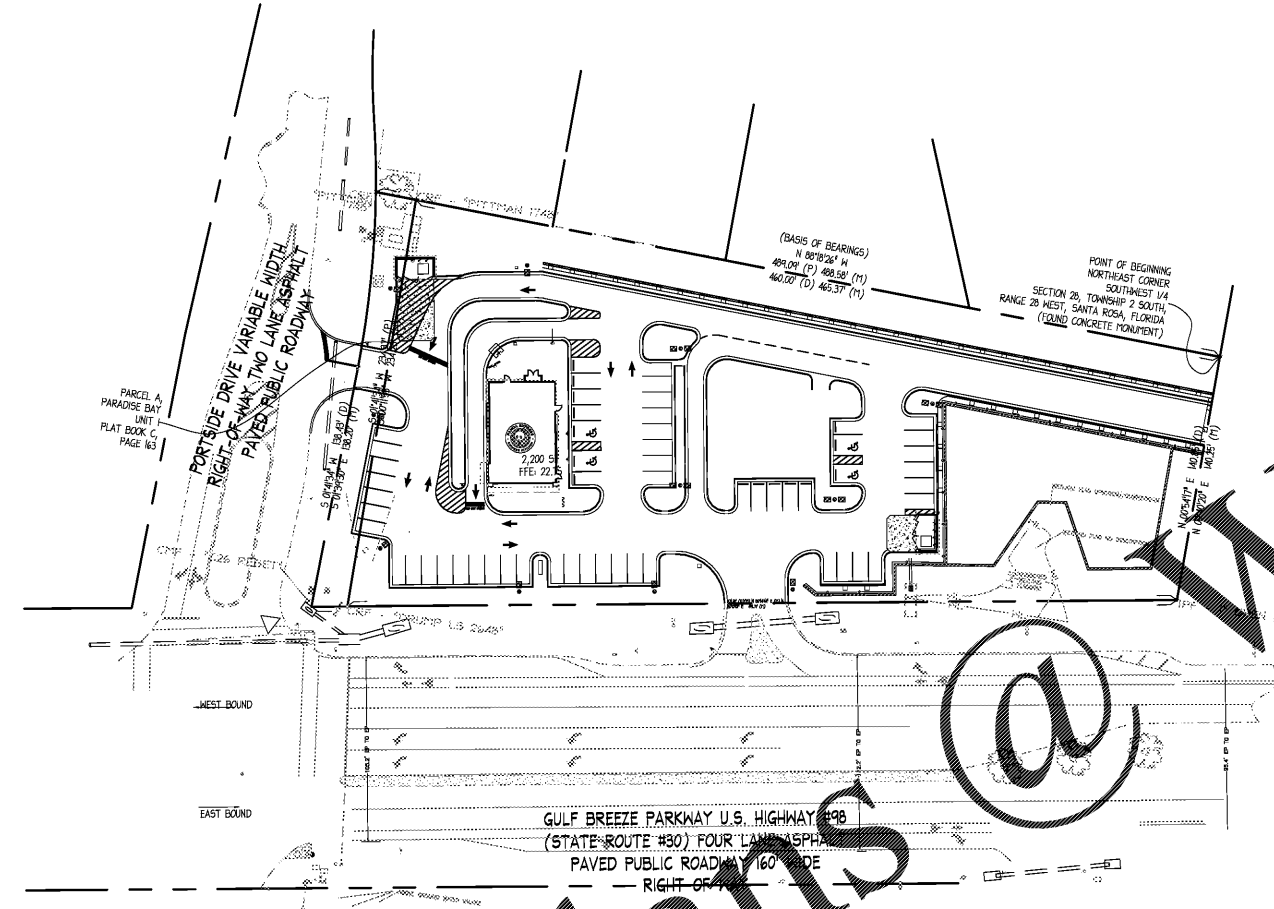


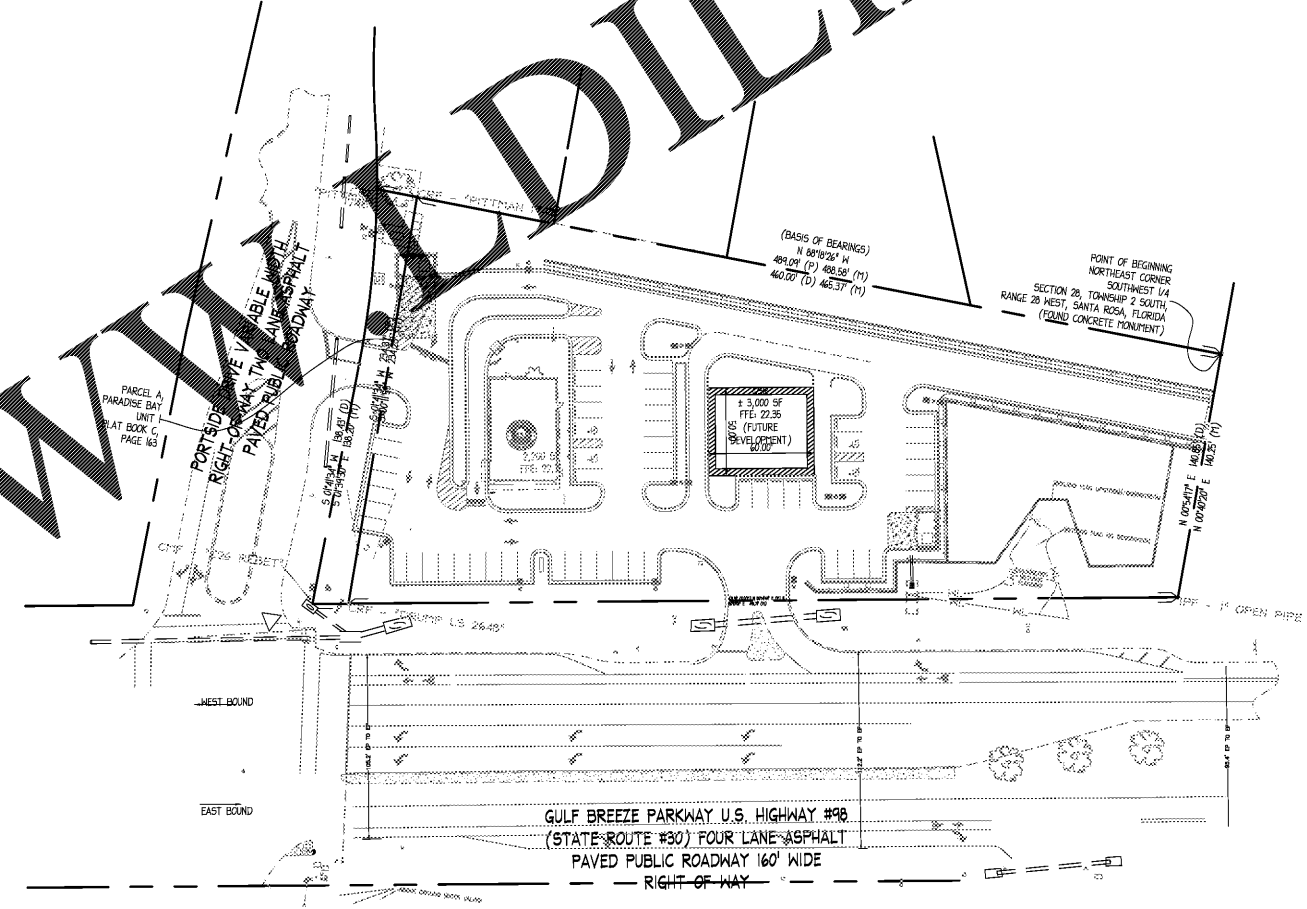
PHASE ONE INCLUDES ALL SITE WORK EXCEPT THE FUTURE 13,000 S.F. OSR BUILDING



PHASE TWO INCLUDES THE FUTURE 13,000 S.F. OSR BUILDING



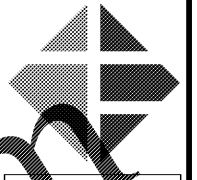
PHASE I



PHASE II

Order Plans @

WWW.DILine.com



ngenum
ENTERPRISES
PLANNING & ENGINEERING
221 ROSWELL ST.
SUITE 100
ALPHARETTA, GA 30009
770.457.9950
HMMUNGEN@GMAIL.COM



THIS ITEM HAS BEEN DIGITALLY SIGNED AND SEALED BY JAMES D. NEFF, P.E. ON THE DATE ADJACENT TO THE SEAL.
PRINTED COPIES OF THIS DOCUMENT ARE NOT CONSIDERED SIGNED AND SEALED AND THE SIGNATURE MUST BE VERIFIED ON ANY ELECTRONIC COPIES.

STATE OF FLORIDA
AUTHORIZATION NUMBER
8370
PLANS PREPARED BY NGENIUM ENTERPRISES FORMERLY GRIMALDI CRAWFORD

PANDA EXPRESS/CFT PLAZA
3668 GULF BREEZE PARKWAY
GULF BREEZE, FLORIDA



CLIENT:
CFT IV DEVELOPMENTS, LLC
1120 N. TOWN CENTER DR., SUITE 150
LAS VEGAS, NV 89144
PHONE: (626) 799-8989

REVISION HISTORY	

THE CIVIL ENGINEER REGULARLY UPDATES ELECTRONIC FILES DURING THE DEVELOPMENT OF A PROJECT AS A RESULT, THE DATA INCLUDED IN ANY CAD FILE OR DRAWING PRIOR TO ITS FINAL RELEASE DOES NOT NECESSARILY REFLECT THE COMPLETE SCOPE OR CONTENT AS SET FORTH IN THE CONTRACT. THE CONTENTS IN THESE FILES MAY THEREFORE BE PRELIMINARY, INCOMPLETE, WORK IN PROGRESS, AND SUBJECT TO CHANGE. FURTHERMORE, THE INFORMATION CONTAINED HEREIN IS THE SOLE PROPERTY OF THE CIVIL ENGINEER. THE ORIGINAL SHALL NOT BE LOANED, ALTERED, OR REPRODUCED IN ANY MANNER WITHOUT THE EXPRESS WRITTEN CONSENT OF THE CIVIL ENGINEER. THESE PLANS ARE SUBJECT TO FEDERAL COPYRIGHT LAWS. ANY USE OF SAME WITHOUT EXPRESS WRITTEN PERMISSION OF THE CIVIL ENGINEER IS PROHIBITED.

PROJ # 170056
DWG NAME 170056 COI.DWG
ISSUE DATE 11/2/2018
PROJ MGR EBF

PHASING PLAN

COI.2
SHEET NUMBER

ISSUE FOR BID