

PROVIDE AN ARC FLASH WARNING SIGN PER NEC 110.16

PANELBOARD (NEW) 208Y/120V, 3PH, 4W 400A M.L.O. SERIES RATED 25/10K A.I.C. GROUND BUS ISOLATED GROUND. Table with columns: DESCRIPTION, WIRE, BRKR, PL, KVA (A, B, C), PL, BRKR, WIRE, DESCRIPTION. Includes items like MC DISPLAY LITS, HOOD CONTL PNL, SERVICE POS, etc.

- 1. UNLESS NOTED, ALL DEVICES AND TERMINATIONS 100 AMPS AND LESS TO BE RATED FOR 60°C WIRE, OVER 100 AMPS, 75°C WIRE.
2. CONTRACTOR TO SUBMIT SERVICE ENTRANCE GEAR SHOP DRAWINGS TO SERVING UTILITY COMPANY FOR APPROVAL.
3. ALL WIRE #8 AND SMALLER TO BE THWN/THHN CU., #6 AND LARGER TO BE XHHW CU.
4. THE DESIGN PROFESSIONAL HAS PERFORMED ALL REQUIRED LOAD CALCULATIONS AND VERIFIES THAT ALL UPSTREAM PANELS AND EQUIPMENT ARE NOT OVERLOADED.

SINGLE LINE DIAGRAM GENERAL NOTES 3 NOT TO SCALE E-601

- 1. ENTIRE INSTALLATION TO COMPLY WITH N.E.C. 110.22 AND 240.86(B).
2. NO DESIGN CHANGES MAY BE MADE TO THE SYSTEM WITHOUT THE PRIOR APPROVAL OF THE DESIGN ELECTRICAL ENGINEER AND THE ELECTRICAL INSPECTOR.
3. A TWO TIER 65000/10000 AIC SERIES RATING SYSTEM IS SPECIFIED BETWEEN THE SES MAINS FUSES AND THE PANEL BRANCH CIRCUIT BREAKERS. NO SUBSTITUTIONS - UNLESS A FULLY RATED SYSTEM IS PROVIDED.
4. MOTOR CONTRIBUTION TO THE FAULT CURRENT IS LESS THAN 1% OF THE INTERRUPTING RATING OF THE DOWNSTREAM CIRCUIT BREAKER(S).
5. THE ELECTRICAL CONTRACTOR SHALL PROVIDE LABELS FOR ALL COMPONENTS OF THE SERIES PROTECTED SYSTEM:
A. PANEL 'SES' STATING CAPACITY TO SERIES COMBINATION SYSTEM RATED 17,518 AMPERES. IDENTIFIED REPLACEMENT COMPONENTS REQUIRED.
B. PANEL 'A' STATING CAPACITY TO SERIES COMBINATION SYSTEM RATED 15,298 AMPERES. IDENTIFIED REPLACEMENT COMPONENTS REQUIRED.
C. PANEL 'B' STATING CAPACITY TO SERIES COMBINATION SYSTEM RATED 14,275 AMPERES. IDENTIFIED REPLACEMENT COMPONENTS REQUIRED.
6. EQUIPMENT SUPPLIER TO PROVIDE CUT SHEETS OF ALL SERIES RATED COMPONENTS (FUSES, CIRCUIT BREAKERS, LIGHTING EACH ITEM AND THE SPECIFIC LISTING OF EACH ITEM'S SERIES RATING WITH THE OTHER.
7. POST ALL INFORMATION ON THE JOB-SITE WITH PERMIT FOR CITY ELECTRICAL INSPECTOR REVIEW/APPROVAL.

SERIES RATING NOTES 4 NOT TO SCALE E-601

SES SWITCHBOARD (NEW) 208Y/120V, 3PH, 4W 600A M.L.O. 25,000 AIC GROUND BUS ISOLATED GROUND. Table with columns: DESCRIPTION, WIRE, BRKR, PL, KVA (A, B, C), PL, BRKR, WIRE, DESCRIPTION. Includes items like PANELBOARD 'A', PANELBOARD 'B', SPACE.

Table with columns: Description, Value, Unit. Includes Total VA per system, Total Connected Load (amperes), Total Diversified Load (amperes).

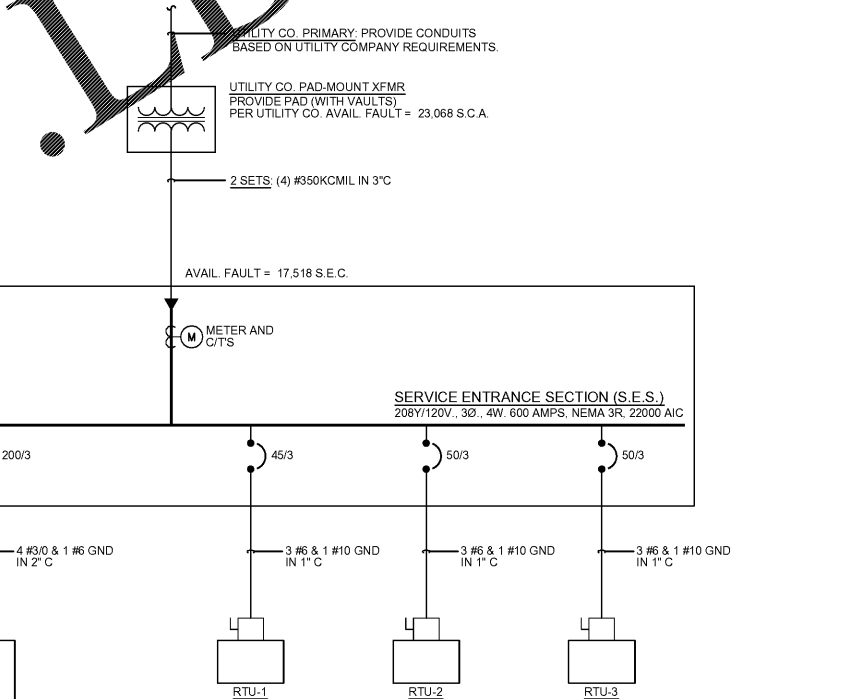
PANELBOARD NOTES ()

- (1) KITCHEN EQUIPMENT SHOWN AT 65% IN PANEL TOTALS PER NEC (KITCHEN EQUIPMENT).
(2) TERMINATE GROUND ON ISOLATED GROUND BUS.
(3) ROUTE CIRCUIT THROUGH LIGHTING CONTACTOR, CONTROLLED BY TIMECLOCK. REFER TO DETAILS, SHEET 5/E-101.
(4) WIRE SIZE INCREASE DUE TO VOLTAGE DROP. SIZE EQUIPMENT GROUND CONDUCTOR PROPORTIONALLY PER NEC.
(5) REFER TO ONE-LINE DIAGRAM FOR WIRE SIZES.

PROVIDE AN ARC FLASH WARNING SIGN PER NEC 110.16

PANELBOARD (NEW) 208Y/120V, 3PH, 4W 225A M.L.O. SERIES RATED 25/10K A.I.C. GROUND BUS ISOLATED GROUND. Table with columns: DESCRIPTION, WIRE, BRKR, PL, KVA (A, B, C), PL, BRKR, WIRE, DESCRIPTION. Includes items like LOGO SIGN, EXTERIOR POLE MOUNTED LTG, FUTURE SITE IRRIGATION, etc.

PANEL SCHEDULES 1 NOT TO SCALE E-601



ELECTRICAL SERVICE ENTRANCE COORDINATION

Table with columns: ITEMS, CONTRACTOR FURNISHED BY, CONTRACTOR INSTALLED BY, UTILITY COMPANY FURNISHED BY, UTILITY COMPANY INSTALLED BY. Lists items like PRIMARY CONDUCTORS, TRANSFORMER, SECONDARY CONDUCTORS, etc.

- 1. CONTRACTOR TO FIELD VERIFY AND COORDINATE THEIR RESPONSIBILITIES FOR ELECTRICAL SERVICE ENTRANCE WITH ELECTRICAL SERVICE PROVIDER; AND PROVIDE BID WITH ALL ASSOCIATED COSTS WITH NO ADDITIONAL COST TO OWNER.

SINGLE LINE DIAGRAM 2 NOT TO SCALE E-601



PANDA RESTAURANT GROUP INC. 1683 Walnut Grove Ave. Rosemead, California 91770 Telephone: 626.799.9898 Facsimile: 626.372.8288

All ideas, designs, arrangement and plans indicated or represented by this drawing are the property of Panda Express Inc. and were created for use on this specific project. None of these ideas, designs, arrangements or plans may be used by or disclosed to any person, firm or corporation without the written permission of Panda Express Inc.

REVISIONS table with columns: No., Description, Date. Includes entries for ISSUED FOR BID & PERMIT and BID SET.

ISSUE DATE: 1 ISSUED FOR BID & PERMIT 12-11-18 2 BID SET 01-30-19

DRAWN BY: E.J.P.

PANDA PROJECT #: S8-19-D6573 ARCH PROJECT #: P7336



PANDA EXPRESS WARM & WELCOME 2200 ATLANTIC BLVD & MARKETPLACE DR JACKSONVILLE, FL 32225

E-601

PANELS, SINGLE LINE, LOAD CALC'S

TRUE WARM & WELCOME 2200