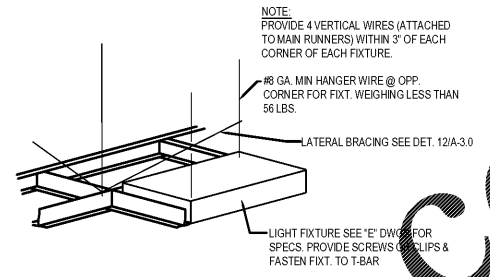


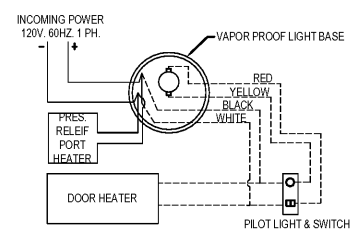
Order Plans

@

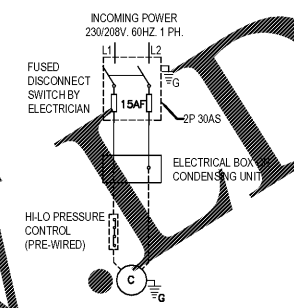
WWW.DIline.com



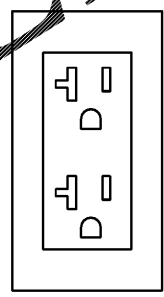
LIGHT FIXTURE DETAIL 4
NOT TO SCALE E-400



FREEZER LTG & DOOR HTR WIRING DIAGRAM 10
NOT TO SCALE E-400

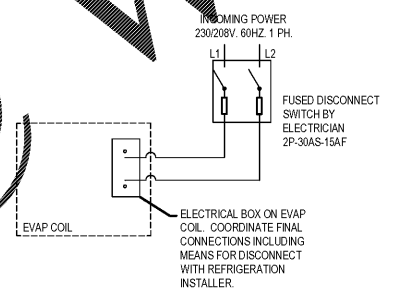


CONDENSING UNIT 7
NOT TO SCALE E-400



ALL OUTLETS TO MOUNT VERTICALLY WITH GROUND PLUG @ LOW POSITION. TYP. U.N.O.
1. IF SHOW WINDOW OUTLETS AT WHITE GYP. BD SOFFIT WHITE DEVICES WITH WHITE COVERPLATES.
2. IF SHOW WINDOW OUTLETS AT DARK T-BAR CEILING. BLACK DEVICES WITH BLACK COVERPLATES.
ALL OTHER OUTLETS IN KITCHEN, SERVICE AREA, DINING AREA AND RESTROOMS TO BE GREY DEVICES WITH STAINLESS STEEL COVERPLATES.

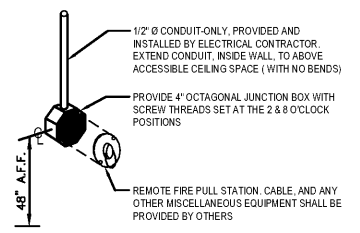
RECEPT. DIAGRAM 3
NOT TO SCALE E-400



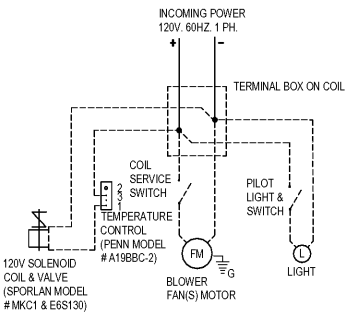
FREEZER EVAPORATOR COIL 9
NOT TO SCALE E-400

1. WIRING SHOULD BE DONE ACCORDING WITH NATIONAL AND LOCAL CODE.
2. CHECK VOLTAGE ON CONDENSING UNIT AND EVAPORATOR COIL BEFORE ANY WORK IS DONE.
3. SOLID LINES TO BE WIRED BY LICENSED ELECTRICIAN ON SITE. DOTTED LINES ARE MANUFACTURE PRE-WIRED.
4. ANY PENETRATIONS THROUGH BOX SHALL BE SEALED AIR TIGHT.

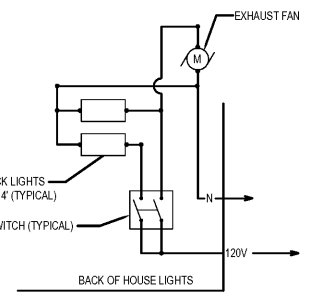
WIC / WIF WIRING DIAGRAM NOTES 6
NOT TO SCALE E-400



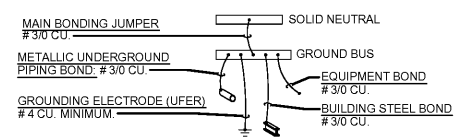
ANSUL PULL STATION DETAIL 2
NOT TO SCALE E-400



COOLER EVAPORATOR COIL 8
NOT TO SCALE E-400



EXHAUST FAN CONTROL DIAGRAM 5
NOT TO SCALE E-400



'MDP' GROUNDING DETAIL 1
NOT TO SCALE E-400



PANDA RESTAURANT GROUP INC.
1683 Walnut Grove Ave.
Rosemead, California
91770
Telephone: 626.799.9898
Facsimile: 626.372.8288

All ideas, designs, arrangement and plans indicated or represented by this drawing are the property of Panda Express Inc. and were created for use on this specific project. None of these ideas, designs, arrangements or plans may be used by or disclosed to any person, firm, or corporation without the written permission of Panda Express Inc.

REVISIONS:

ISSUE DATE:

1	ISSUED FOR BID & PERMIT	12-11-18
2	BID SET	01-30-19

DRAWN BY: E.J.P.
PANDA PROJECT #: S8-19-D6573
ARCH PROJECT #: P7336

cph
www.cphcorp.com
A Full Service A & E Firm
Plans Prepared By: **CPI, Inc.**
500 West Fulton St.
Sanford, FL 32771
Ph: 407-322-8841
Licenses:
Eng. C.O.A. No. 2750-E
Survey L.B. No. CA-669-L.S
Arch. Lic. No. 285-342



PANDA EXPRESS
WARM & WELCOME 2200
ATLANTIC BLVD & MARKETPLACE DR
JACKSONVILLE, FL 32225

E-400

ELECTRICAL DETAILS, DIAGRAMS

TRUE WARM & WELCOME 2200