



PANDA RESTAURANT GROUP INC.
 1683 Walnut Grove Ave.
 Rosemead, California
 91770
 Telephone: 626.799.9898
 Facsimile: 626.372.8288

All ideas, designs, arrangement and plans indicated or represented by this drawing are the property of Panda Express Inc. and were created for use on this specific project. None of these ideas, designs, arrangements or plans may be used by or disclosed to any person, firm, or corporation without the written permission of Panda Express Inc.

REVISIONS:

ISSUE DATE:

1	ISSUED FOR BID & PERMIT	12-11-18
2	BID SET	01-30-19

DRAWN BY: E.J.P.

PANDA PROJECT #: S8-19-D6573
 ARCH PROJECT #: P7336

gph www.gphcorp.com A Full Service A & E Firm	Plans Prepared By CPH, Inc. 500 West Fulton St. Sanford, FL 32771 Ph: 407-322-8841
	Licenses: Eng. C.O.A. No. 2750-E Survey L.B. No. CA-609-LS Arch. Lic. No. 285-342

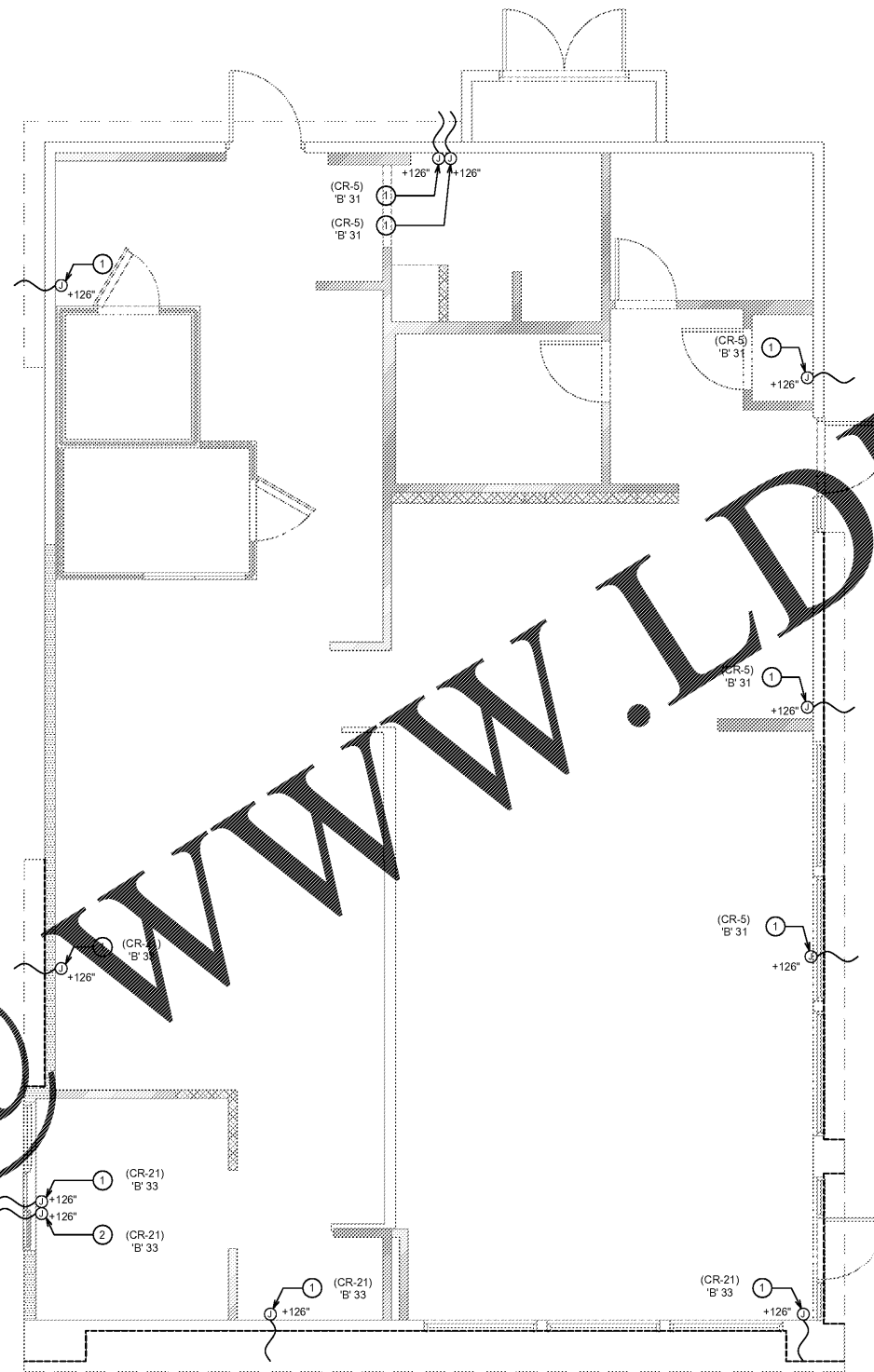


PANDA EXPRESS
 WARM & WELCOME 2200
 ATLANTIC BLVD & MARKETPLACE DR
 JACKSONVILLE, FL 32225

E-101.1

CANOPY LIGHTING PLAN

TRUE WARM & WELCOME 2200



Order Plans

- E.C. TO PROVIDE J-BOX WITH 3' WHIP FOR CONNECTION TO PANDA EXPRESS PROVIDED LIGHTED CANOPY. E.C. TO MAKE FINAL CONNECTION.
- E.C. TO PROVIDE J-BOX WITH 3' WHIP FOR CONNECTION TO PANDA EXPRESS PROVIDED LIGHTED DRIVE THRU CANOPY. E.C. TO MAKE FINAL CONNECTION.

Ⓞ CANOPY LIGHTING KEYED NOTES	2
NOT TO SCALE	E-101.1

SECURITY CAMERA PLAN	1
Scale= 1/4" = 1'-0"	E-101

