

- FAN #4 A3-B300-G18 - HEATER
1. DIRECT GAS FIRED HEATED MAKE UP AIR UNIT WITH 18" BLOWER AND 12" BURNER.
  2. INTAKE HOOD WITH EZ FILTERS
  3. DOWN DISCHARGE - AIR FLOW RIGHT -> LEFT
  4. COILING INTERLOCK RELAY, 24VAC COIL, 120V CONTACTS. LOCKS OUT BURNER CIRCUIT WHEN AC IS ENERGIZED.
  5. LOW FIRE START. ALLOWS THE BURNER CIRCUIT TO ENERGIZE WHEN THE MODULATION CONTROL IS IN A LOW FIRE POSITION.
  6. GAS PRESSURE GAUGE, 0-35" 2 1/2" DIAMETER, 1/4" THREAD SIZE
  7. GAS PRESSURE GAUGE, 0-15 INCHES WG, 2 1/2" DIAMETER, 1/4" THREAD SIZE
  8. MOTORIZED BACK DRAFT DAMPER 30" X 30" FOR SIZE 3 STANDARD & MODULAR HEATER UNITS W/EXTENDED SHAFT, STANDARD GALVANIZED CONSTRUCTION, 3/4" REAR FLANGE, LOW LEAKAGE, NF81P-S ACTUATOR INCLUDED
  9. DX COIL MODULE FOR SIZE 3 MODULAR FANS - 5,000 THRU 7,000 CFM @ 10 TON - 2 CIRCUIT DX COIL, 4E20602H-43.5X42.0 NOT BUILT WITH OPP SIDE CONTROLS. DXM3-1 CONDENSER AND CONDENSER DISCONNECT UNLESS PROVIDED ON QUOTE WILL BE INSTALLED, STARTED AND WARRANTED BY OTHERS. R410A REFRIGERANT AND PIPING BY OTHERS. ENSURE DX-KIT IS ORDERED FOR FILTER DRIER, SIGHT GLASS, THERMAL EXPANSION VALVE, COLD HEATCRAFT COIL # SEJ0603B-43.5X42.0
  10. DOWNTURN PLENUM FOR SIZE 3 COILING COIL MODULE - REQUIRED FOR DOWN DISCHARGE COILING COIL APPLICATIONS
  11. 10 TON, DUAL CIRCUIT CONDENSING UNIT, 3 PHASE 208V, AIR COOLED.
  12. INCLUDES: FACTORY INSTALLED CARRIER DISCONNECT SWITCH, R410A REFRIGERANT AND PIPING BY OTHERS. 4-5 WEEK LEAD TIME. SHIPPING INCLUDED IN PRICE. SHIPS FROM TYLER, TX. SHIPS SEPARATE, FREIGHT INCLUDED. 38A042A0A5-0A0A0.
  13. CURB DUCT HANGER - 1-1/4" ANGLE IRON FRAME, WELDED TO CURB TO SUPPORT STANDARD SIZE DUCTWORK. PRICED PER CURB. ONLY AVAILABLE WHEN CURB ASSEMBLY IS ORDERED.
  14. DX COILING INTAKE AIR THERMOSTAT AND RELAYS MOUNTED IN UNIT - SET POINT FOR THERMOSTAT SHOULD BE 65°F.
  15. DX 3-1 KIT R410A, DUAL CIRCUIT 10 TON, INCLUDES FILTER DRIER, SIGHT GLASS, AND THERMAL EXPANSION VALVE FOR DX UNITS. INSTALLATION BY OTHERS. INCLUDES R410A TXV.
  16. SEPARATE 120VAC WIRING PACKAGE FOR MAKE-UP AIR UNITS. OPTION MUST BE SELECTED WHEN MOUNTING VFD IN PREWIRE PANEL OR WITH DCV PACKAGE, PROVIDES SEPARATE 120VAC INPUT TO SUPPLY FAN. THIS 120V SIGNAL MUST BE RUN BY ELECTRICIAN FROM DCV TO MUA SWITCH.

NOTE: SUPPLY DUCT MUST BE INSTALLED TO MEET SMACNA STANDARDS. A MINIMUM STRAIGHT DUCT LENGTH MUST BE MAINTAINED DOWNSTREAM OF UNIT DISCHARGE UNLESS OTHERWISE SPECIFIED. DO NOT RELY ON UNIT TO SUPPORT DUCT IN ANY WAY. FAILURE TO PROPERLY SIZE DUCTWORK MAY CAUSE SYSTEM EFFECTS AND REDUCE PERFORMANCE OF THE EQUIPMENT. SUGGESTED STRAIGHT DUCT SIZE IS 24" X 24" X 86" LONG.

SUPPLY SIDE HEATER INFORMATION

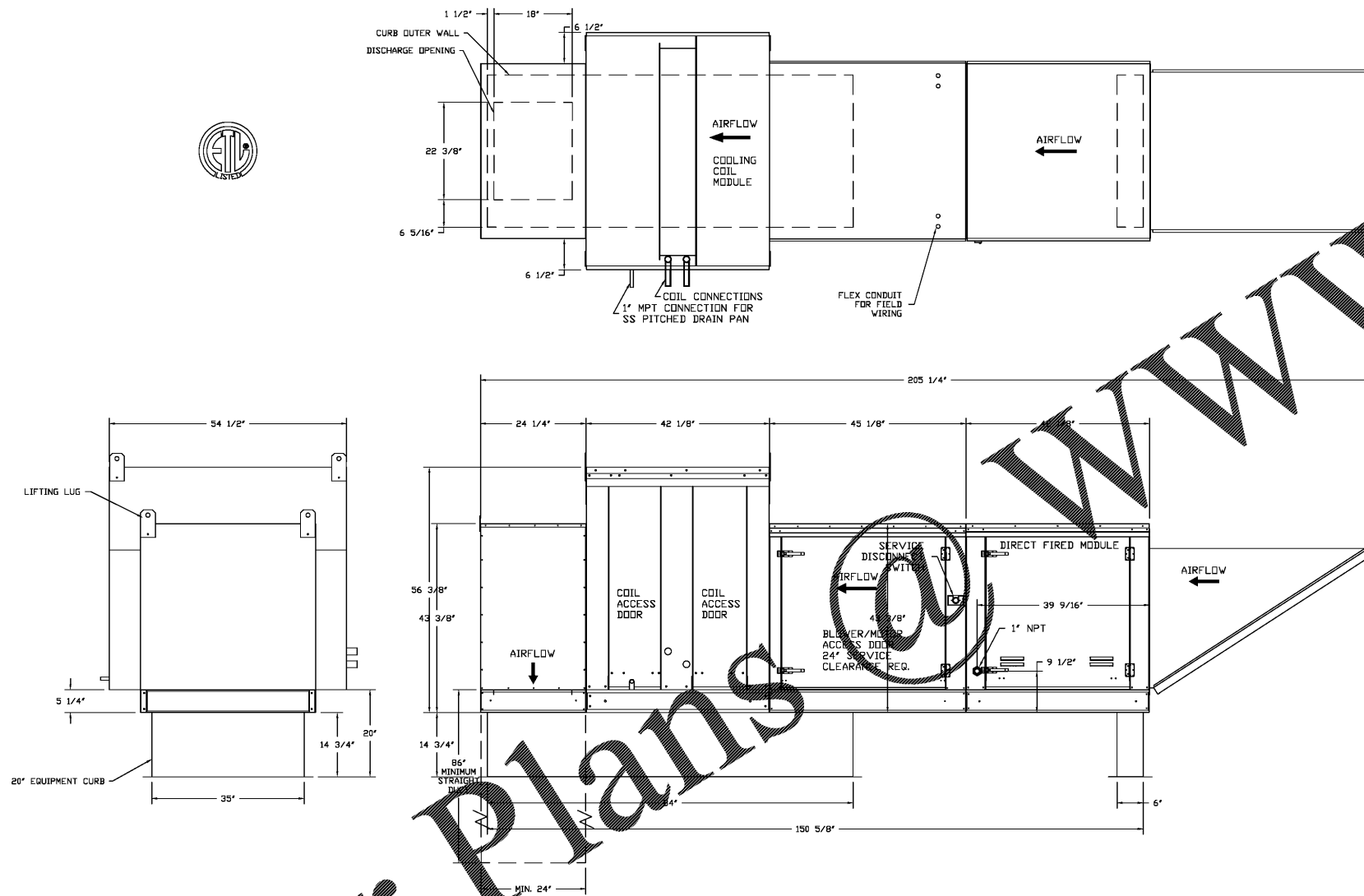
WINTER TEMPERATURE = 20°F, TEMP. RISE = 65°F.  
BTUS CALCULATED OFF ACTUAL AIR DENSITY  
OUTPUT BTUS AT ALTITUDE OF 0.0 FT. = 376283  
INPUT BTUS AT ALTITUDE OF 0.0 FT. = 409003

NOTE: UNLESS OTHERWISE STATED, PANDA RESTAURANT GROUP SHALL PROVIDE ALL EQUIPMENT ON THE FOLLOWING CAPTIVEAIRE SHEETS, INCLUDING HOODS, FIRE SYTEM, EXHAUST FANS, SUPPLY FAN, BATHROOM FAN AND ELECTRICAL INTERLOCK PACKAGE

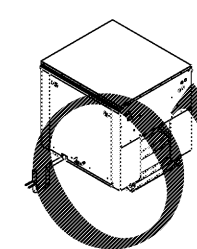
ANSUL GAS VALVE:

THE ANSUL GAS VALVE IS PROVIDED BY CAPTIVEAIRE SYSTEMS. CONTACT OUR OFFICE WITH THE VALVE SIZE 3 DAYS IN ADVANCE OF WHEN IT IS NEEDED ON SITE.

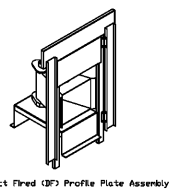
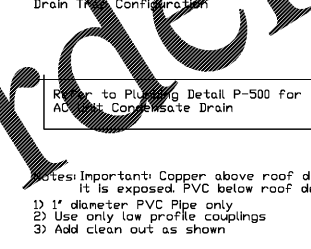
FOR QUESTIONS CALL THE CAPTIVEAIRE SOUTHERN CALIFORNIA OFFICE  
STONE MILL DESIGN CENTER  
2915 RED HILL AVE, SUITE 0106  
COSTA MESA, CA 92626  
TEL: 800-967-7701 EMAIL: REG8@CAPTIVEAIRE.COM



Typical Drain Trap Install



Recommended Cooling Coil Drain Trap Configuration



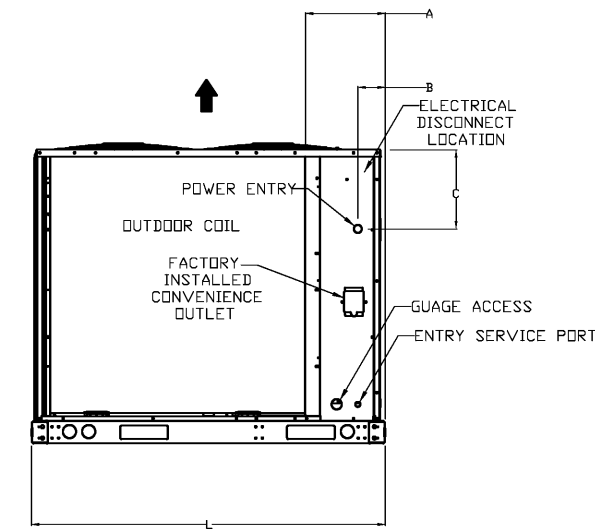
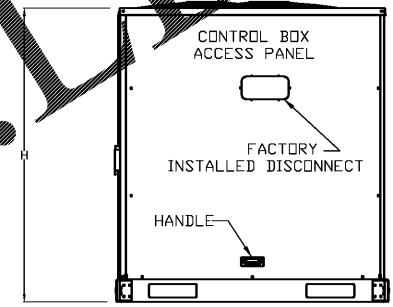
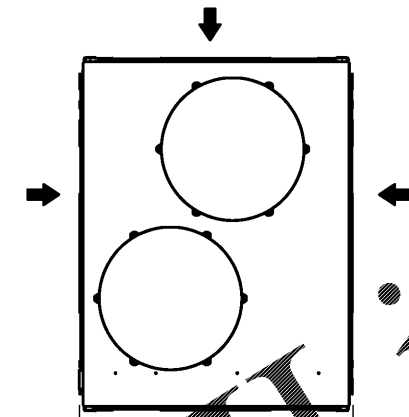
**Direct Fired Profile Plate Specifications:**  
Description: Direct fired burners shall have patented US Patent No. US6692282, self-adjusting profile plates designed to ensure proper air velocity and pressure drop across the burner. Profile plates shall allow burners to achieve clean combustion by leveling by-product levels to a maximum of 50% of carbon monoxide (CO) and 50% of nitrogen dioxide (NO2). Direct fired units shall be configured with the burner-mounted downstream of the burner. The arrangement shall ensure a consistent air flow, regardless of burner temperature.  
Application: Spring-loaded burner profile plates are engineered to automatically react to the surmount of a fresh air stream, without the need for any motors or actuators to mechanically adjust them. With this feature, all DF units are designed for demand control ventilation (DCV) requirements.  
Certification: All profile plate assemblies shall be included in the DF unit's ETL listing and comply with combined safety standards ANSI Z89.4 and CSA 3.7 (non-recirculating DF heaters) and ANSI Z89.8 (recirculating DF heaters).  
General Construction:  
-Profile plates shall be formed from 600 galvanized steel.  
-Profile plates shall vary in size per unit.  
-Profile plates shall be mounted along the same plane as the discharge of the burner.  
-Design shall incorporate properly formed, permanently mounted spring hinges.  
-Spring hinges shall be made from plated steel.

ALL DIMENSIONS ARE NOMINAL AND GIVEN IN INCHES.

MODEL	WEIGHT	UNIT DIMENSIONS						CONNECTION SIZES		NOMINAL TONNAGE
		A	B	C	H	L	W	SUCTION	LIQUID	
38AUD12	499 LBS	10-1/16	3-3/4	13-1/4	50-3/8	59-3/8	45-7/8	1-1/8	3/8	10

ELECTICAL INFORMATION

	V-PH-HZ	RLA	MCA	FUSE SIZE
38AUD12	208/230-3-60	32	40.6	60



**REVISIONS**

DESCRIPTION	DATE

**ISSUE DATE:**

1	ISSUED FOR BID & PERMIT	12-11-18
2	BID SET	01-30-19

**ISSUE DATE:**


**REVISIONS:**


**ISSUE DATE:**


**REVISIONS:**


**ISSUE DATE:**


**REVISIONS:**


**ISSUE DATE:**


**REVISIONS:**


**ISSUE DATE:**


**REVISIONS:**


**ISSUE DATE:**


**REVISIONS:**


**ISSUE DATE:**


**REVISIONS:**


**ISSUE DATE:**


**REVISIONS:**


**ISSUE DATE:**


**REVISIONS:**


**ISSUE DATE:**


**REVISIONS:**


**ISSUE DATE:**


**REVISIONS:**


**ISSUE DATE:**


**REVISIONS:**


**ISSUE DATE:**


**REVISIONS:**


**ISSUE DATE:**


**REVISIONS:**


**ISSUE DATE:**


**REVISIONS:**


**ISSUE DATE:**


**REVISIONS:**


**ISSUE DATE:**


**REVISIONS:**


**ISSUE DATE:**


**REVISIONS:**


**ISSUE DATE:**


**REVISIONS:**


**ISSUE DATE:**


**REVISIONS:**


**ISSUE DATE:**


**REVISIONS:**


**ISSUE DATE:**


**REVISIONS:**


**ISSUE DATE:**


**REVISIONS:**


**ISSUE DATE:**


**REVISIONS:**


**ISSUE DATE:**


**REVISIONS:**


**ISSUE DATE:**


**REVISIONS:**


**ISSUE DATE:**


**REVISIONS:**
