



PANDA RESTAURANT GROUP INC.
 1683 Walnut Grove Ave.
 Rosemead, California
 91770
 Telephone: 626.799.9898
 Facsimile: 626.372.8288

All ideas, designs, arrangement and plans indicated or represented by this drawing are the property of Panda Express Inc. and were created for use on this specific project. None of these ideas, designs, arrangements or plans may be used by or disclosed to any person, firm, or corporation without the written permission of Panda Express Inc.

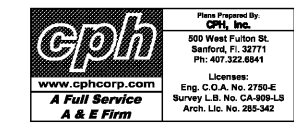
REVISIONS:

NO.	DESCRIPTION	DATE
1	ISSUED FOR BID & PERMIT	12-11-18
2	BID SET	01-30-19

ISSUE DATE:

1	ISSUED FOR BID & PERMIT	12-11-18
2	BID SET	01-30-19

DRAWN BY: SJM
 PANDA PROJECT #: S8-19-D6573
 ARCH PROJECT #: P7336



PANDA EXPRESS
 WARM & WELCOME 2200
 ATLANTIC BLVD & MARKETPLACE DR
 JACKSONVILLE, FL 32225

M-100
 H.V.A.C. FLOOR PLAN &
 H.V.A.C. ROOF PLAN

TRUE WARM & WELCOME 2200

MECHANICAL KEY NOTES:

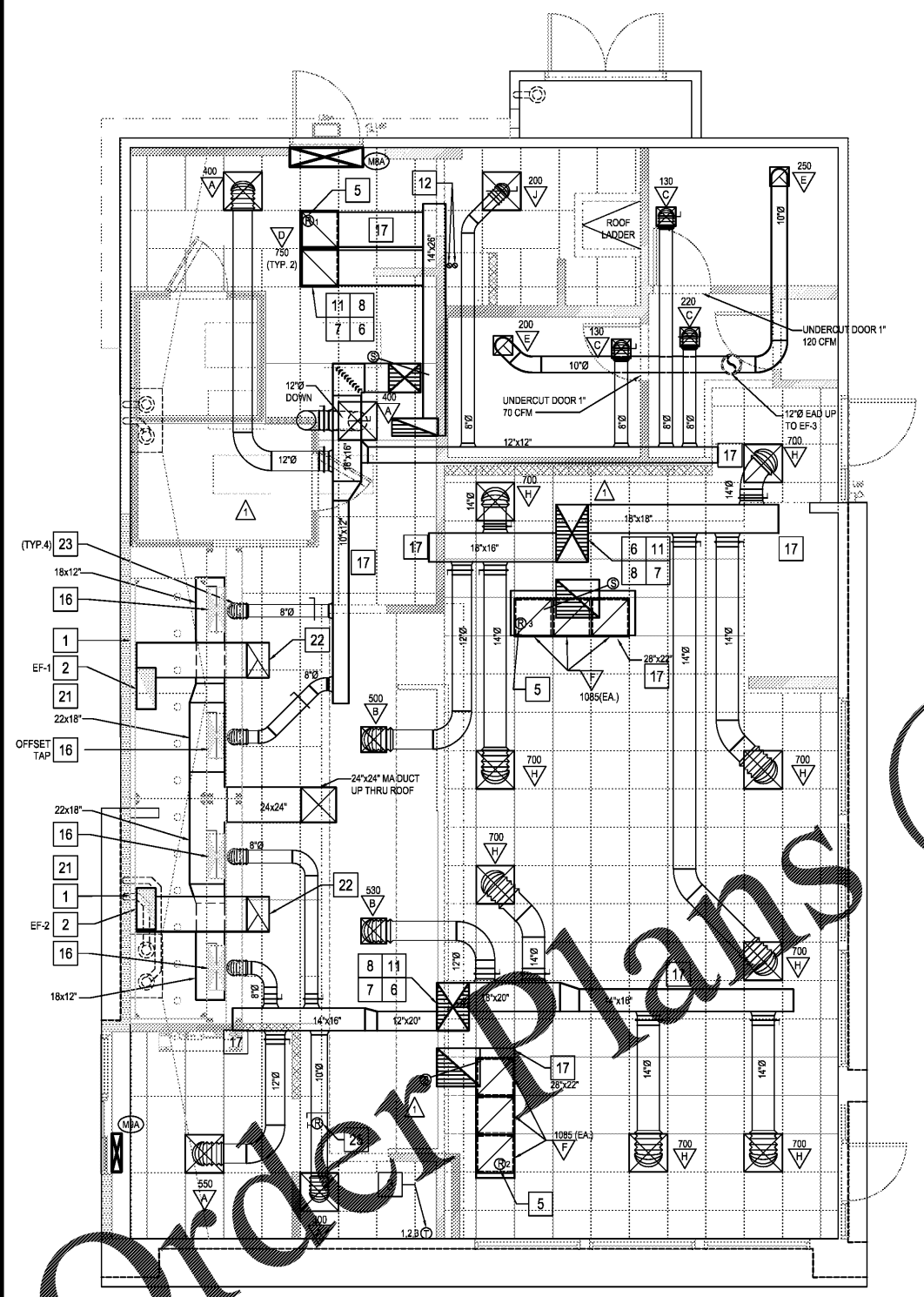
- 1 INSTALL GREASE EXHAUST HOODS FURNISHED BY PANDA. HOOD SHALL BE ONE CAPTIVE/ARE 4824-ND HOOD EXHAUSTING 3,450 CFM. SUPPORT FROM STRUCTURE ABOVE WITH UNISURIT AND ALL THREAD ROOF MOUNT HOOD PER LOCAL CODE REQUIREMENTS. REFER TO PLAN FOR HOOD CONNECTIONS. SEE CODE COMPLIANCE DRAWINGS ON SHEET M-500 AND CAPTIVE/ARE HOOD DRAWINGS FOR ADDITIONAL REQUIREMENTS. (TWO SECTIONS TOTAL).
- 2 PROVIDE AND INSTALL GREASE EXHAUST DUCT, ROUTE ON TOP OF MAKE UP AIR DUCT, FROM INLET OF ROOF MOUNTED GREASE EXHAUST FAN, TRANSITION TO 22"x14" BETWEEN ROOF JOIST, CONNECT TO EXHAUST HOOD COLLAR. FIELD VERIFY WRAP WITH THERMAL CERAMIC FIREMASTER DUCT WRAP+ OR EQUAL. FABRICATE DUCT FROM 16 GAUGE STEEL WITH WELDED SEAM CONSTRUCTION SEAL TO THE ROOF CURB WITH FIRE CHIMNEY. SEE HOOD DETAIL DRAWINGS ON SHEET M-500 AND CAPTIVE/ARE DRAWINGS. TRANSITION DUCT TO CURB AND FAN INLET SIZE. TRANSITION TO 26X12" DUCT COLLAR SIZE.
- 3 MOUNT THERMOSTAT AT MANAGER STATION. REFER TO DETAIL #1 ON SHEET M-200. SEE DWG FOR EXACT LOCATION OF REMOTE SENSOR. SEE ROOFTOP UNIT SCHEDULE AND TEMPERATURE CONTROL DIAGRAM DETAIL 5 FOR ADDITIONAL INFORMATION.
- 4 INSTALL GREASE EXHAUST CURB (MA-1 AND EF-2) AND MAKE UP AIR (MA-1) FURNISHED BY PANDA. FIELD VERIFY LOCATION OF CURB WITH ARCHITECTURAL AND STRUCTURAL DRAWINGS.
- 5 PROVIDE AND INSTALL A REMOTE SENSOR FOR ROOFTOP UNIT AT THIS LOCATION. MOUNT REMOTE SENSOR TO RETURN AIR DUCTWORK. SEE TEMPERATURE CONTROL DIAGRAM ON SHEET M-501 FOR ADDITIONAL INFORMATION.
- 6 PROVIDE AND INSTALL DUCT MOUNTED SMOKE DETECTOR AT SUPPLY AIR DUCT PER FMC, SECTION 8.01. DETECTORS SHALL BE INTERLOCKED TO SHUT DOWN ROOFTOP UNITS UPON DETECTION OF SMOKE. PROVIDE ALL CONTROL WIRING NECESSARY TO PERFORM THIS OPERATION.
- 7 PROVIDE FLEXIBLE CONNECTION BETWEEN UNIT, ROUTE DUCT THRU ROOF CURB AND TRUSS.
- 8 FOR GAS OR WATER CONNECTION, SEE PLUMBING DRAWINGS.
- 9 PROVIDE FABRICATED CURB PER MANUFACTURER'S REQUIREMENTS AND COORDINATE EXACT LOCATION OF UNIT IN FIELD. SHIM ROOF CURB LEVEL FOR PROPER CONDENSATE DRAINAGE.
- 10 FURNISH AND INSTALL ALL TEMPERATURE CONTROL WIRING FROM THE UNIT TO THE THERMOSTAT OR OTHER CONTROL DEVICES.
- 11 FULL SIZE SA AND RA UP TO RTU. TRANSITION AS REQUIRED TO RTU INLET/OUTLET SIZE.
- 12 PVC VENT AND COMBUSTION AIR PIPING PROVIDED AND INSTALLED BY PLUMBING FOR SEALED COMBUSTION WATER HEATER. REFER TO PLUMBING PLANS.
- 13 WATER HEATER VENT AND COMBUSTION AIR INTAKE PIPES. REFER TO PLUMBING PLANS. OFFSET AS REQUIRED FOR CLEARANCE FROM AIR INTAKES.
- 14 ROOF HYDRANT. REFER TO PLUMBING DRAWINGS.
- 15 ROUTE CONDENSATE DRAIN IN CEILING SPACE OVER AND DOWN IN WALL, SLOPE 1/4" PER FOOT. STUB-OUT AND ELBOW DOWN OVER MOP SINK. TERMINATE WITH MINIMUM 2" AIR GAP.
- 16 MA DUCT (BELOW MAKE UP AIR) CONNECT TO 28"x10" RISER FROM SUPPLY PLENUM. 1,380 CFM
- 17 PROVIDE DUCT EXTERNAL INSULATION WRAP AT TRUNK, TYPICAL.
- 18 NOT USED.
- 19 1" CONDENSATE DRAIN LINE. REFER TO DETAIL 16P-500.
- 20 CONTRACTOR TO PROVIDE AND INSTALL ALL NECESSARY REFRIGERANT LINES AND INSULATION FROM CONDENSING UNITS TO SCHEDULED EQUIPMENT. ONCE INSTALLED, CONTRACTOR IS RESPONSIBLE FOR ALL START-UP, TESTING AND CALIBRATION OF EQUIPMENT.
- 21 PROVIDE AND INSTALL ALL EQUIPMENT WITH MANUFACTURER'S RECOMMENDED CLEARANCES FOR MAINTENANCE. MAINTAIN MINIMUM CLEARANCES TO ELECTRICAL AND SERVICE ACCESS PANELS AND DISCONNECTS.
- 22 GREASE DUCT CLEANOUT LOCATION. PROVIDE ACCESS TO CLEANOUT ABOVE CEILING. REFER TO MECHANICAL SPECIFICATIONS SHEET M-500.
- 23 8" CONNECTION TO HOOD RTU SUPPLY PLENUM COLLAR. BALANCE TO 259 CFM.
- 24 PROVIDE AND INSTALL ACR TUBING, SIZED AND ROUTED PER MANUFACTURER'S INSTRUCTIONS, FROM REMOTE REFRIGERANT CONDENSERS TO WALK-IN COOLER AND FREEZER FAN COILS, AND ICE MAKER. TEST, PURGE, EVACUATE AND CHARGE LINES AS REQUIRED BY MANUFACTURER. (START-UP FOR ICE MAKER IS BY OWNER'S REPRESENTATIVE). ROUTE REFRIGERANT LINES THROUGH "AIR HUB" PROVIDED AND INSTALLED BY GC (REFER TO ARCH. ISO 3 AND 4, SHEET A-108).
- 25 ROOM AIR SENSOR FROM CAPTIVE/ARE HOOD ON BACK OF MENU BOARD WALL, AS CLOSE TO CEILING AS POSSIBLE.

NOTE: MAXIMUM FLEXIBLE DUCT LENGTH ALLOWED SHALL BE PER LOCAL CODE AND AMENDMENTS. FMC HAS NO LIMITATIONS FOR FLEXIBLE DUCT (RECTANGULAR) LENGTHS. FMC HAS A 14' LIMITATION ON ALL FLEXIBLE AIR CONNECTORS (ROUND).

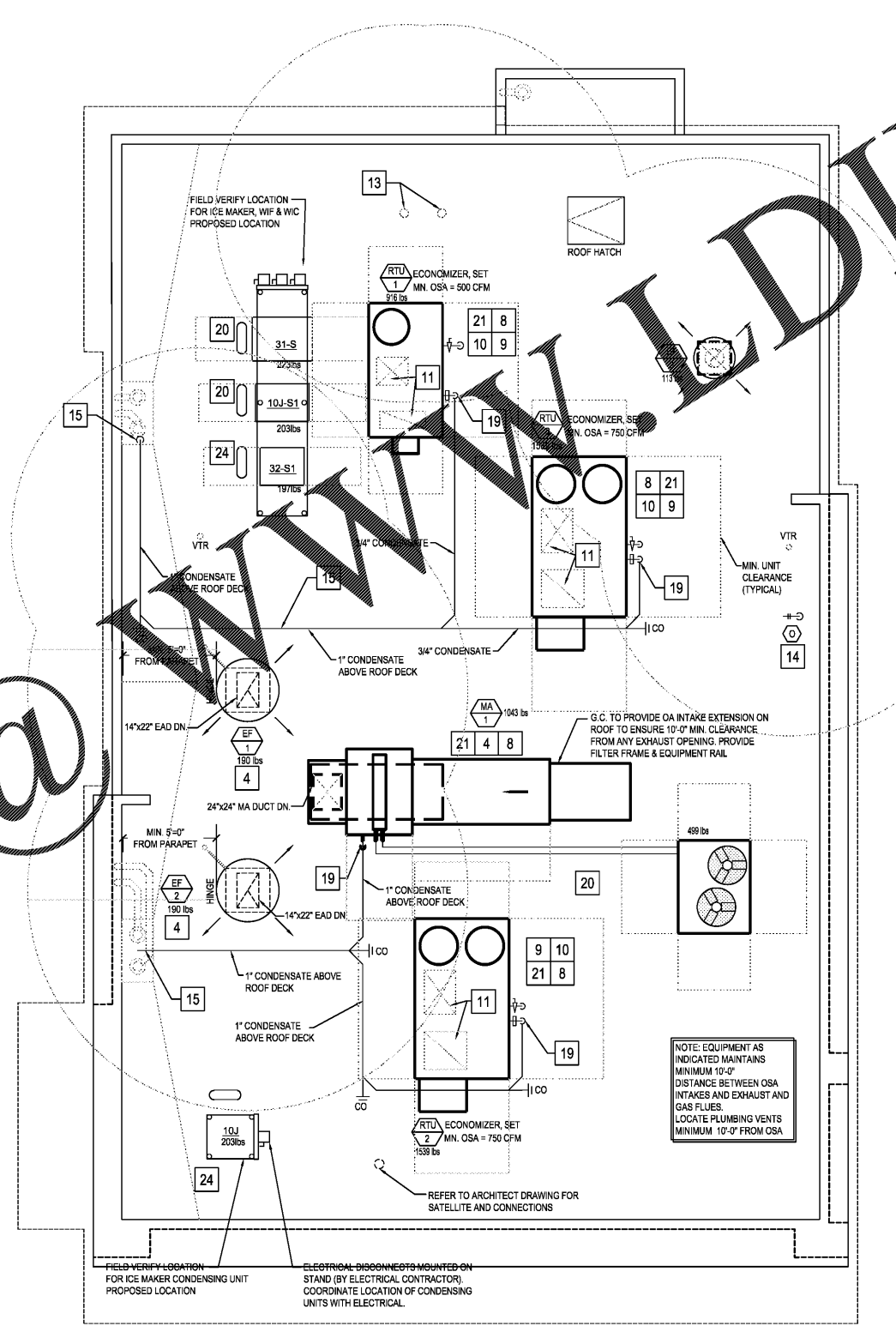
MUA CALCULATIONS

# OF DAYS >85 DEGREES F	160 DAYS
# OF DAYS <60 DEGREES F	45 DAYS

* IF # OF DAYS EXCEEDS 14 THEN HEATING AND/OR COOLING IS TO BE PROVIDED



HVAC FLOOR PLAN 2
 Scale: 1/4"=1'-0" M-100



HVAC ROOF PLAN 1
 Scale: 1/4"=1'-0" M-100