



PANDA RESTAURANT GROUP INC.  
1683 Walnut Grove Ave.  
Rosemead, California  
91770  
Telephone: 626.799.9898  
Facsimile: 626.372.8288

All ideas, designs, arrangement and plans indicated or represented by this drawing are the property of Panda Express Inc. and were created for use on this specific project. None of these ideas, designs, arrangements or plans may be used by or disclosed to any person, firm, or corporation without the written permission of Panda Express Inc.

REVISIONS:


ISSUE DATE:

1	ISSUED FOR BID & PERMIT	12-11-18
2	BID SET	01-30-19

DRAWN BY: DJS

PANDA PROJECT # S8-19-06573

ARCH PROJECT # P7336

www.gphcorp.com  
A Full Service A & E Firm

Prepared By:  
GPH, Inc.  
500 West Fulton St.  
Sanford, FL 32771  
Ph: 407-322-8841

Licenses:  
Eng. C.O.A. No. 2750-E  
Survey L.B. No. CA-6189-LS  
Arch. Lic. No. 285-342

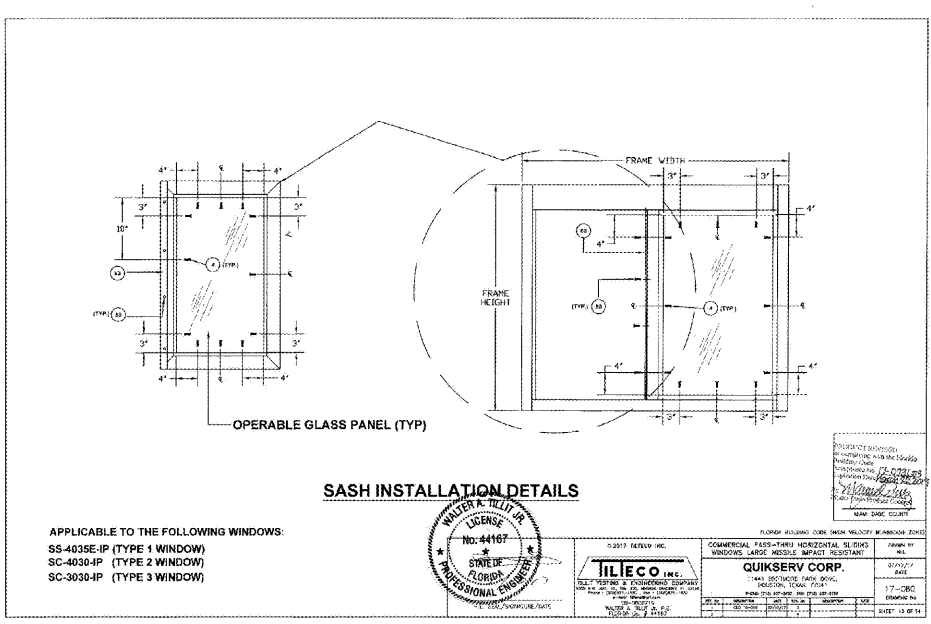
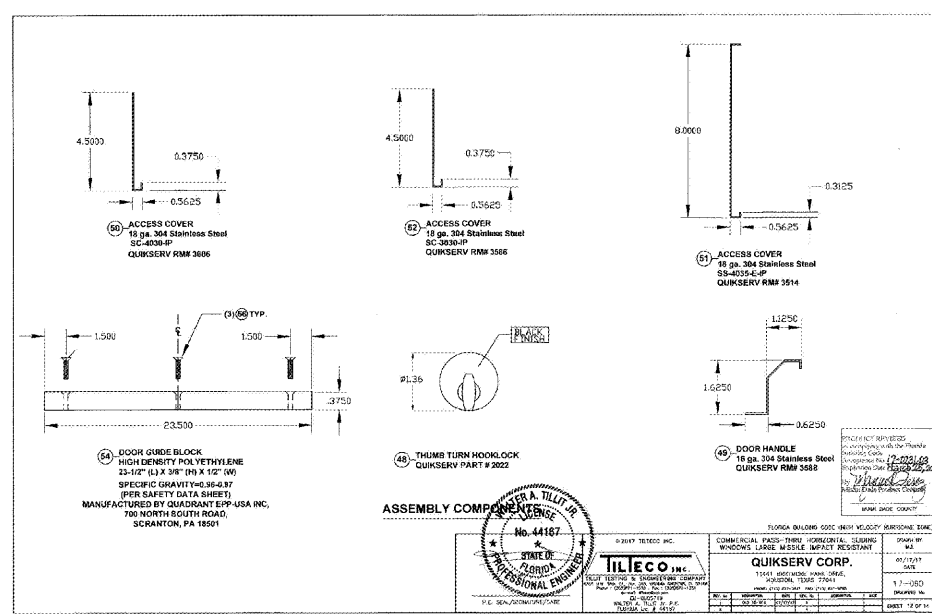
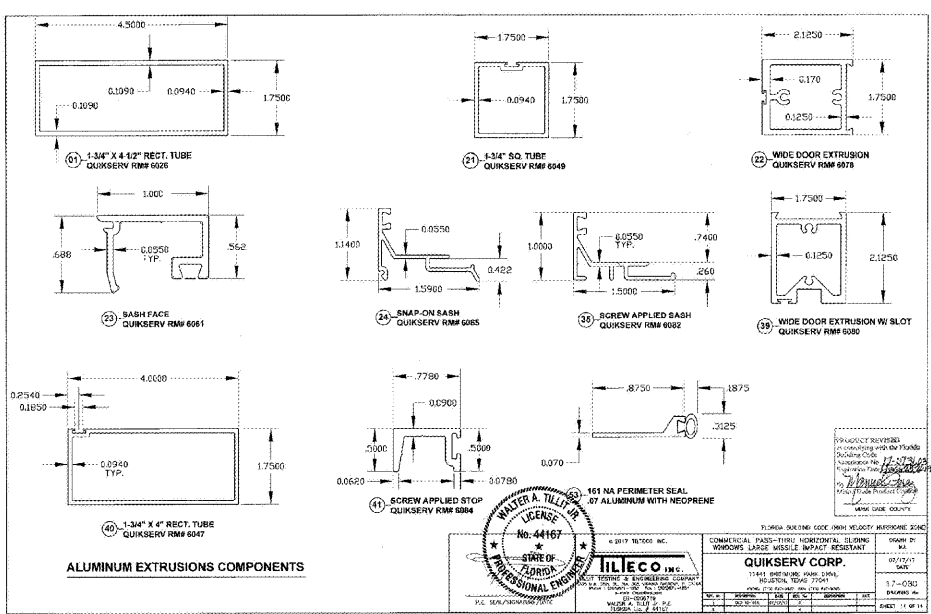


PANDA EXPRESS  
WARM & WELCOME 2200  
ATLANTIC BLVD & MARKETPLACE DR  
JACKSONVILLE, FL 32225

FAD - 3.2

FLORIDA PRODUCT APPROVAL  
QUIKSERV COMMERCIAL ALUMINUM PT  
HORIZONTAL SLIDING WINDOW - L.M.I.

TRUE WARM & WELCOME 2200



**BILL OF MATERIALS**

Ref #	Description	Quikserv #	Material	Specs
1	1-3/4" x 4" Rect. Tube	6005	6005-T6 Aluminum	See drawing pg. 11 - length varies
2	1-3/4" sq. Tube	6049	6049-T6 Aluminum	See drawing pg. 11 - length varies
3	Wide Door Extrusion	6073	6073-T6 Aluminum	See drawing pg. 11 - length varies
4	Sash Face	6061	6061-T6 Aluminum	See drawing pg. 11 - length varies
5	Snap-on Sash	6085	6085-T6 Aluminum	See drawing pg. 11 - length varies
6	Screw Applied Sash	6082	6082-T6 Aluminum	See drawing pg. 11 - length varies
7	Wide Door Extrusion w/ Slot	6080	6080-T6 Aluminum	See drawing pg. 11 - length varies
8	1-3/4" x 4" Rect. Tube	6047	6047-T6 Aluminum	See drawing pg. 11 - length varies
9	161 NA Perimeter Seal	6084	6084-EPDM	See drawing pg. 11 - length varies
10	Door Gasket Block	3022	High Density Polyethylene	See drawing pg. 11 - length varies
11	Access Cover	3006	304 Stainless Steel	See drawing pg. 11 - length varies
12	Access Cover	3008	304 Stainless Steel	See drawing pg. 11 - length varies
13	Access Cover	3514	304 Stainless Steel	See drawing pg. 11 - length varies
14	Door Handle	3558	304 Stainless Steel	See drawing pg. 11 - length varies
15	Thumb Turn Lock	3022	304 Stainless Steel	See drawing pg. 11 - length varies
16	Flashing Plate	3767	304 Stainless Steel	See drawing pg. 11 - length varies
17	Wide Door Extrusion w/ Slot	6080	6080-T6 Aluminum	See drawing pg. 11 - length varies
18	1-3/4" x 4" Rect. Tube	6047	6047-T6 Aluminum	See drawing pg. 11 - length varies
19	Screw Applied Stop	6084	6084-EPDM	See drawing pg. 11 - length varies
20	Door Gasket Block	3022	High Density Polyethylene	See drawing pg. 11 - length varies
21	Access Cover	3006	304 Stainless Steel	See drawing pg. 11 - length varies
22	Access Cover	3008	304 Stainless Steel	See drawing pg. 11 - length varies
23	Access Cover	3514	304 Stainless Steel	See drawing pg. 11 - length varies
24	Door Handle	3558	304 Stainless Steel	See drawing pg. 11 - length varies
25	Thumb Turn Lock	3022	304 Stainless Steel	See drawing pg. 11 - length varies
26	Flashing Plate	3767	304 Stainless Steel	See drawing pg. 11 - length varies
27	Wide Door Extrusion w/ Slot	6080	6080-T6 Aluminum	See drawing pg. 11 - length varies
28	1-3/4" x 4" Rect. Tube	6047	6047-T6 Aluminum	See drawing pg. 11 - length varies
29	Screw Applied Stop	6084	6084-EPDM	See drawing pg. 11 - length varies
30	Door Gasket Block	3022	High Density Polyethylene	See drawing pg. 11 - length varies
31	Access Cover	3006	304 Stainless Steel	See drawing pg. 11 - length varies
32	Access Cover	3008	304 Stainless Steel	See drawing pg. 11 - length varies
33	Access Cover	3514	304 Stainless Steel	See drawing pg. 11 - length varies
34	Door Handle	3558	304 Stainless Steel	See drawing pg. 11 - length varies
35	Thumb Turn Lock	3022	304 Stainless Steel	See drawing pg. 11 - length varies
36	Flashing Plate	3767	304 Stainless Steel	See drawing pg. 11 - length varies
37	Wide Door Extrusion w/ Slot	6080	6080-T6 Aluminum	See drawing pg. 11 - length varies
38	1-3/4" x 4" Rect. Tube	6047	6047-T6 Aluminum	See drawing pg. 11 - length varies
39	Screw Applied Stop	6084	6084-EPDM	See drawing pg. 11 - length varies
40	Door Gasket Block	3022	High Density Polyethylene	See drawing pg. 11 - length varies
41	Access Cover	3006	304 Stainless Steel	See drawing pg. 11 - length varies
42	Access Cover	3008	304 Stainless Steel	See drawing pg. 11 - length varies
43	Access Cover	3514	304 Stainless Steel	See drawing pg. 11 - length varies
44	Door Handle	3558	304 Stainless Steel	See drawing pg. 11 - length varies
45	Thumb Turn Lock	3022	304 Stainless Steel	See drawing pg. 11 - length varies
46	Flashing Plate	3767	304 Stainless Steel	See drawing pg. 11 - length varies
47	Wide Door Extrusion w/ Slot	6080	6080-T6 Aluminum	See drawing pg. 11 - length varies
48	1-3/4" x 4" Rect. Tube	6047	6047-T6 Aluminum	See drawing pg. 11 - length varies
49	Screw Applied Stop	6084	6084-EPDM	See drawing pg. 11 - length varies
50	Door Gasket Block	3022	High Density Polyethylene	See drawing pg. 11 - length varies
51	Access Cover	3006	304 Stainless Steel	See drawing pg. 11 - length varies
52	Access Cover	3008	304 Stainless Steel	See drawing pg. 11 - length varies
53	Access Cover	3514	304 Stainless Steel	See drawing pg. 11 - length varies
54	Door Handle	3558	304 Stainless Steel	See drawing pg. 11 - length varies
55	Thumb Turn Lock	3022	304 Stainless Steel	See drawing pg. 11 - length varies
56	Flashing Plate	3767	304 Stainless Steel	See drawing pg. 11 - length varies

FLORIDA BUILDING CODE (HIGH VELOCITY WINDS) APPROVED DRAWING  
QUIKSERV CORP. 13415 BENTON BLVD. TALLAHASSEE, FL 32310  
MANUFACTURED BY QUADRANT EPP-USA INC. 700 NORTH SOUTH ROAD, SCRANTON, PA 18501

Order Plans

@