

ANCHOR SCHEDULE

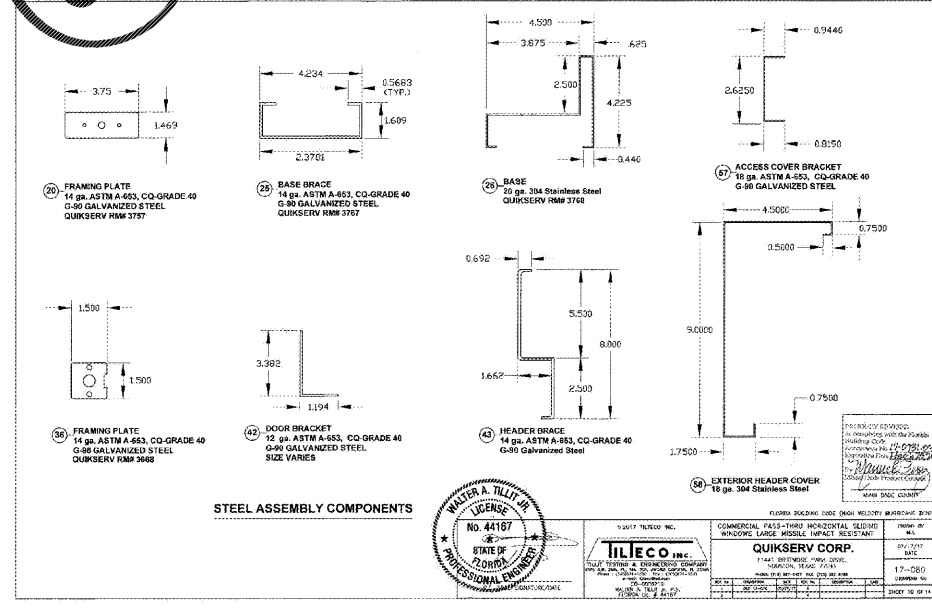
MAXIMUM ANCHOR SPACING "S" SCHEDULE AT JAMB

DESIGN LOADS	SUBSTRATE	ANCHOR TYPE	MAX SPACING
60 OR 180 PSF	POURED CONCRETE (SEE NOTE 8A.1)	1/2" x 1/2" RW DEX TAPCON ANCHORS	16" 1/2"
	CONCRETE BLOCK (SEE NOTE 8A.1)	1/2" x 1/2" RW DEX TAPCON ANCHORS	16" 1/2"
	ALUMINUM MEMBER (SEE NOTE 8A.1)	1/2" x 1/2" RW DEX TAPCON ANCHORS	17" 1/2"
	STEEL MEMBER (SEE NOTE 8A.1)	1/2" x 1/2" RW DEX TAPCON ANCHORS	17" 1/2"
	WOOD (SEE NOTE 8A.1)	1/2" x 1/2" RW DEX TAPCON ANCHORS	13" 1/2"
	90 TO 120 PSF	POURED CONCRETE (SEE NOTE 8A.1)	1/2" x 1/2" RW DEX TAPCON ANCHORS
CONCRETE BLOCK (SEE NOTE 8A.1)		1/2" x 1/2" RW DEX TAPCON ANCHORS	11" 1/2"
ALUMINUM MEMBER (SEE NOTE 8A.1)		1/2" x 1/2" RW DEX TAPCON ANCHORS	14"
STEEL MEMBER (SEE NOTE 8A.1)		1/2" x 1/2" RW DEX TAPCON ANCHORS	14"
WOOD (SEE NOTE 8A.1)		1/2" x 1/2" RW DEX TAPCON ANCHORS	13" 1/2"
120 TO 150 PSF		POURED CONCRETE (SEE NOTE 8A.1)	1/2" x 1/2" RW DEX TAPCON ANCHORS
	CONCRETE BLOCK (SEE NOTE 8A.1)	1/2" x 1/2" RW DEX TAPCON ANCHORS	10"
	ALUMINUM MEMBER (SEE NOTE 8A.1)	1/2" x 1/2" RW DEX TAPCON ANCHORS	14"
	STEEL MEMBER (SEE NOTE 8A.1)	1/2" x 1/2" RW DEX TAPCON ANCHORS	14"
	WOOD (SEE NOTE 8A.1)	1/2" x 1/2" RW DEX TAPCON ANCHORS	13" 1/2"
	150 TO 180 PSF	POURED CONCRETE (SEE NOTE 8A.1)	1/2" x 1/2" RW DEX TAPCON ANCHORS
CONCRETE BLOCK (SEE NOTE 8A.1)		1/2" x 1/2" RW DEX TAPCON ANCHORS	10"
ALUMINUM MEMBER (SEE NOTE 8A.1)		1/2" x 1/2" RW DEX TAPCON ANCHORS	14"
STEEL MEMBER (SEE NOTE 8A.1)		1/2" x 1/2" RW DEX TAPCON ANCHORS	14"
WOOD (SEE NOTE 8A.1)		1/2" x 1/2" RW DEX TAPCON ANCHORS	13" 1/2"

PROFESSIONAL ENGINEER
WALTER A. TILLOT
No. 44167
STATE OF FLORIDA

TILECO INC. COMMERCIAL PASS-THROUGH HORIZONTAL SLIDING WINDOWS LARGE WIDELINE IMPACT RESISTANT

QUIKSERV CORP. 1144 S. UNIVERSITY AVENUE, SUITE 2000, GAITHERSBURG, MD 20878



PANDA RESTAURANT GROUP INC.
1683 Walnut Grove Ave.
Rosemead, California 91770
Telephone: 626.799.9898
Facsimile: 626.372.8288

All ideas, designs, arrangement and plans indicated or represented by this drawing are the property of Panda Express Inc. and were created for use on this specific project. None of these ideas, designs, arrangements or plans may be used by or disclosed to any person, firm or corporation without the written permission of Panda Express Inc.

REVISIONS:

NO.	DESCRIPTION	DATE
1	ISSUED FOR BID & PERMIT	12-11-18
2	BID SET	01-30-19

ISSUE DATE:

1	ISSUED FOR BID & PERMIT	12-11-18
2	BID SET	01-30-19

DRAWN BY: DQS

PANDA PROJECT # S8-19-D6573
ARCH PROJECT # P7336

cph
www.cphcorp.com
A Full Service A & E Firm

Plans Prepared By:
CPI, Inc.
500 West Fulton St.
Sanford, FL 32771
Ph: 407-322-8841

Licenses:
Eng. C.O.A. No. 2750-E
Survey L.B. No. CA-6169-L
Arch. Lic. No. 285-342



PANDA EXPRESS
WARM & WELCOME 2200
ATLANTIC BLVD & MARKETPLACE DR
JACKSONVILLE, FL 32225

FAD - 3.1

FLORIDA PRODUCT APPROVAL
QUIKSERV COMMERCIAL ALUMINUM PT
HORIZONTAL SLIDING WINDOW - L.M.I.