

AVAILABLE STEELCRAFT DOOR CONFIGURATIONS (SEE NOTE 1.)

STEELCRAFT H SERIES DOOR TYPE	DOOR MATERIAL PER SHT. 4	MAXIMUM OPENING SIZE WIDTH / HEIGHT	SKIN MATERIAL	GA./MIN. THK
FLUSH	HONEYCOMB POLYSTYRENE POLYURETHANE	3'0" / 7'0"	CRS GALV	16/.053" / 14/.067"
STEEL STIFFENED	STEEL STIFFENED	3'0" / 7'0"	CRS GALV	16/.053" / 14/.067"
TEMPERATURE RISE CORE	MINERAL FIBER	3'0" / 7'0"	CRS GALV	16/.053" / 14/.067"
EMBOSSED PANELS	POLYSTYRENE/HONEYCOMB	3'0" / 7'0"	GALV	16/.053"

AVAILABLE STEELCRAFT FRAME CONFIGURATIONS (SEE NOTE 2.)

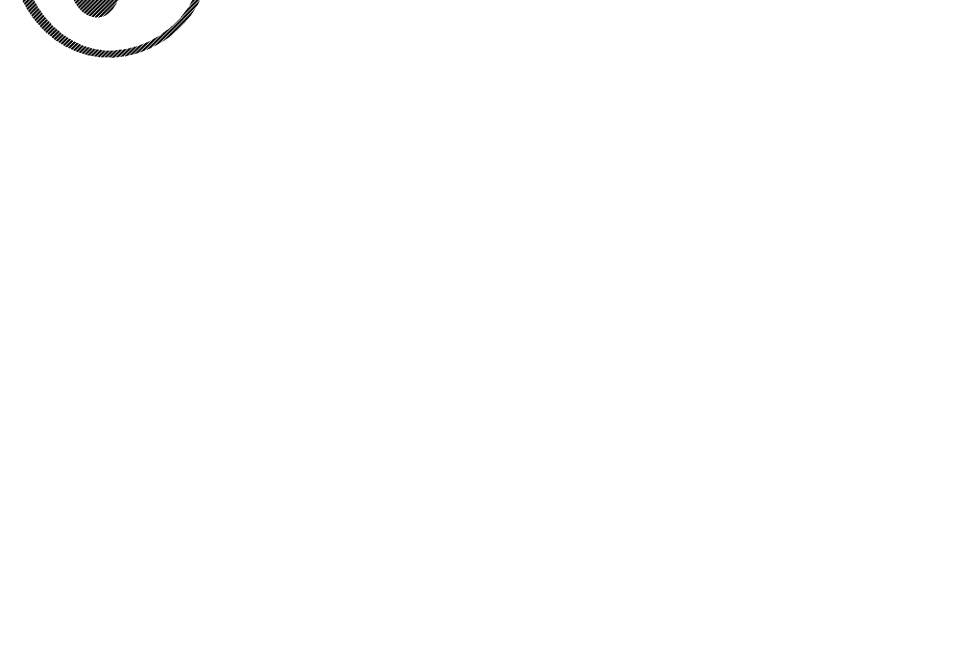
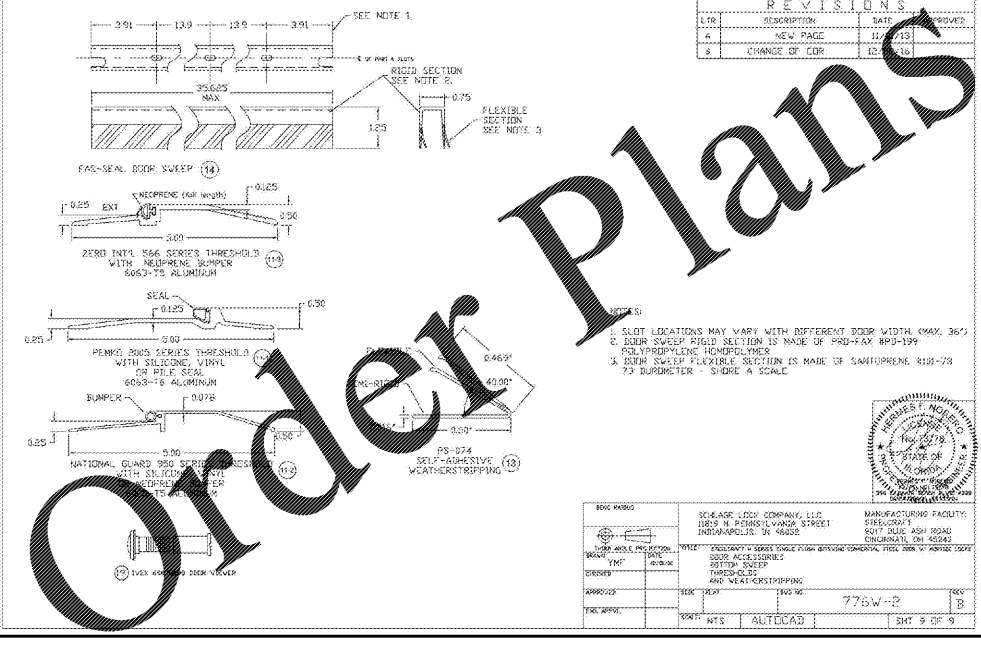
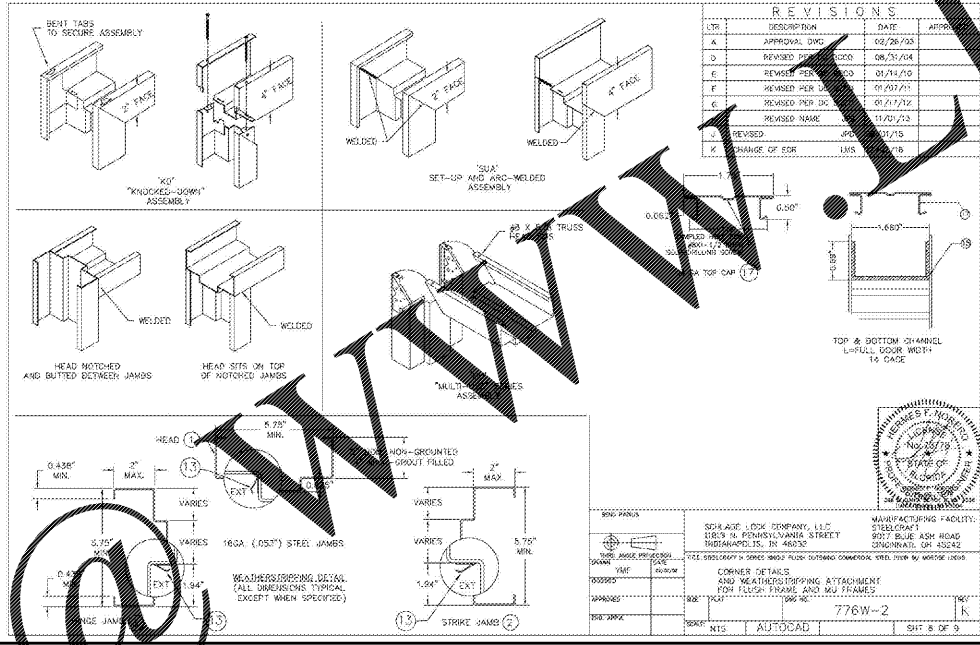
STEELCRAFT FRAME SERIES	JAMB DEPTH	MAXIMUM OPENING SIZE WIDTH / HEIGHT	MATERIAL	GA./MIN. THK
F	5.75" MIN.	3'0" / 7'0"	CRS/HRS GALV	16/.053" / 14/.067"
MU	5.75" MIN.	3'0" / 7'0"	CRS/HRS GALV	16/.053" / 14/.067"

TABLE 3: STEEL DOOR/FRAME MECHANICAL PROPERTIES

MATERIAL	ASTM REF.	YIELD STRENGTH (MIN)	TENSILE STRENGTH (MIN)	ELONGATION (MIN)
HRS	ASTM A366	44.7 MIN.	50.2 MIN.	31.1 MIN.
HRS	ASTM A1011	44.7 MIN.	50.2 MIN.	31.1 MIN.
GALV: AED	ASTM A624	44.7 MIN.	50.2 MIN.	31.1 MIN.

REVISIONS

LTR	DESCRIPTION	DATE	APPROVED
A	APPROVAL DATES	03/24/10	
B	REVISED PER DC 8020	08/28/14	
C	REVISED PER DC 8020	01/14/19	
D	REVISED PER DC 8020	01/21/22	
E	REVISED PER DC 8020	01/21/22	
F	REVISED PER DC 8020	01/21/22	
G	REVISED PER DC 8020	01/21/22	
H	REVISED PER DC 8020	01/21/22	
I	REVISED NAME	02/07/23	
J	REVISED	05/08/25	
K	CHANGE OF EDR	11/21/24	



Order Plans



PANDA RESTAURANT GROUP INC.
1683 Walnut Grove Ave.
Rosemead, California
91770
Telephone: 626.799.9898
Facsimile: 626.372.8288

All ideas, designs, arrangement and plans indicated or represented by this drawing are the property of Panda Express Inc. and were created for use on this specific project. None of these ideas, designs, arrangements or plans may be used or disclosed to any person, firm or corporation without the written permission of Panda Express Inc.

REVISIONS:

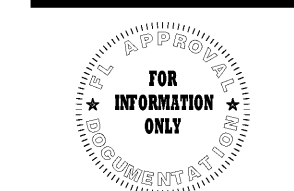
LTR	DESCRIPTION	DATE	APPROVED
A	APPROVAL DATES	03/24/10	
B	REVISED PER DC 8020	08/28/14	
C	REVISED PER DC 8020	01/14/19	
D	REVISED PER DC 8020	01/21/22	
E	REVISED PER DC 8020	01/21/22	
F	REVISED PER DC 8020	01/21/22	
G	REVISED PER DC 8020	01/21/22	
H	REVISED PER DC 8020	01/21/22	
I	REVISED NAME	02/07/23	
J	REVISED	05/08/25	
K	CHANGE OF EDR	11/21/24	

ISSUE DATE:

1	ISSUED FOR BID & PERMIT	12-11-18
2	BID SET	01-30-19

DRAWN BY: OAS
PANDA PROJECT #: S8-19-D6573
ARCH PROJECT #: P7336

gph Full Service A & E Firm
www.gphcorp.com
Plan Prepared By: GPH Inc.
500 West Fulton St.
Sanford, FL 32771
Ph: 407-322-8841
Licenses: Eng. C.O.A. No. 2750-E
Survey L.B. No. CA-6169-L
Arch. Lic. No. 285-342



PANDA EXPRESS
WARM & WELCOME 2200
ATLANTIC BLVD & MARKETPLACE DR
JACKSONVILLE, FL 32225

FAD - 2.1

FLORIDA PRODUCT APPROVAL
SCHLAGE STEELCRAFT H SERIES STEEL DOOR

TRUE WARM & WELCOME 2200