

W.W. Schaefer Engineering & Consulting, P.A. (CA #6809)  
7480 150<sup>th</sup> Court North  
Palm Beach Gardens, FL 33418  
Phone (561)744-3424

W. W. Schaefer Engineering & Consulting, P.A. (CA #6809)  
7480 150<sup>th</sup> Court North  
Palm Beach Gardens, FL 33418  
Phone (561)744-3424

TAS-201, 202 & 203, ASTM E1330, ASTM E1331, ASTM E1332, ASTM E1885, ASTM E1996 & AAMA 514

Test Laboratory: Intertek Architectural Testing, Inc. (Previously named Hurricane-Test Laboratory, Inc.)

Test report numbers: 0049-0402-11 & 0049-0211-08  
Note: All HVHZ test reports have been signed & sealed by a Florida PE.

- General report notes & system limitations:
- All size & installation conditions shown in this report and the referenced drawing No. 1633 are based off the referenced test reports and/or engineering analysis in accordance with the Florida Building Code.
  - Storefront systems shall be constructed in accordance with the descriptions in this report, and the manufacturer's state approved quality assurance entity specifications.
  - This product is approved for use in the vicinity of the High Velocity Hurricane Zone (HVHZ).
  - Job required design wind pressure shall be calculated in accordance with the Florida Building Code Chapter 16 and ASCE 7 Minimum Design Loads for Buildings and Other Structures (0.85 discounting factor may apply per the current ASCE 7 standards).
  - These storefront systems are, large missile impact rated for use in wind zone 4 & missile level "D" locations and need not be shuttered.
  - Dry glazing gaskets are in accordance with ASTM C864 or ASTM C509 per FBC chapter 24.

Quality Assurance Entity: Architectural Testing, Inc.

JUN 28 2016

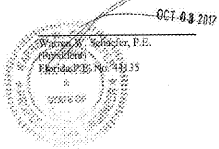
Warren W. Schaefer, P.E.  
Florida Professional Engineer #44135



**CERTIFICATION OF INDEPENDENCE FOR EVALUATION**

Let it be known that neither Warren W. Schaefer, P.E. nor W. W. Schaefer Engineering & Consulting, P.A. has nor will have any ties, financial or otherwise, with any company manufacturing, distributing or installing products that are evaluated by Warren W. Schaefer, P.E. except as mentioned by those companies to provide engineering services as required for product approval evaluations and submissions. In addition, neither Warren W. Schaefer, P.E. nor W. W. Schaefer Engineering & Consulting, P.A. has nor will have any ties, financial or otherwise, with any entity involved in the approval process of the products being evaluated including the test laboratory that has tested the applicable product(s).

Sincerely,



**ENGINEER'S EVALUATION REPORT #WWS 309**

Prepared for:  
Kawneer Company, Inc.  
555 Gadsden Court  
Norcross, GA 30092  
Phone: 770-449-5355

Prepared by:  
Warren W. Schaefer, P.E.  
Florida Professional Engineer #44135

Manufacturer: Kawneer Company, Inc.

Product Category: Storefront

Evaluation Method: 1-D (Engineer's evaluation)

Product model & name: IR500 LMF Aluminum Store Front System

Documents that must accompany this report:  
1. W. W. Schaefer Engineering & Consulting drawing No. 1633

Storefront size, restrictions and assembly requirements:  
See drawing No. 1633

Maximum allowable design pressures:  
See drawing No. 1633

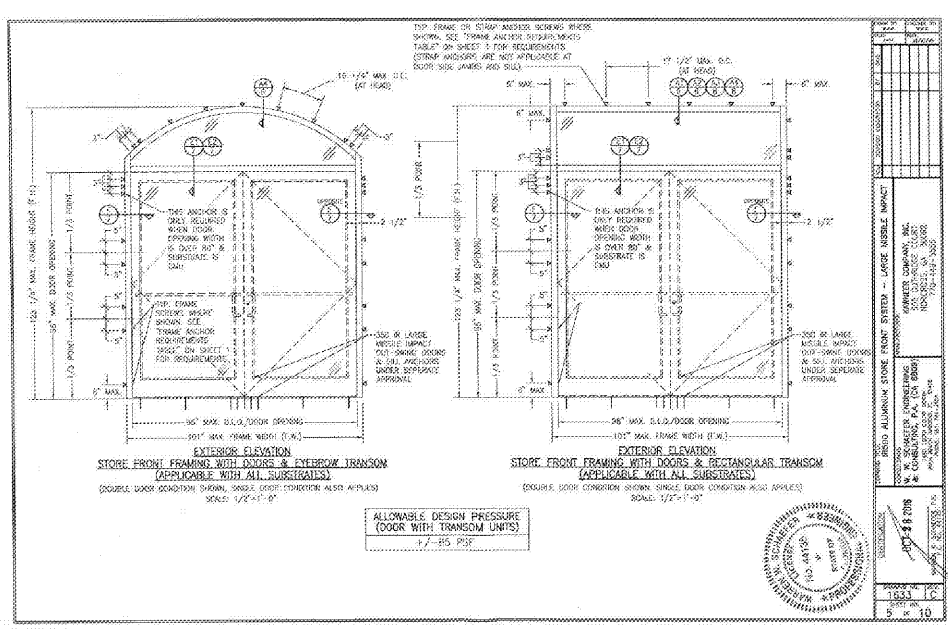
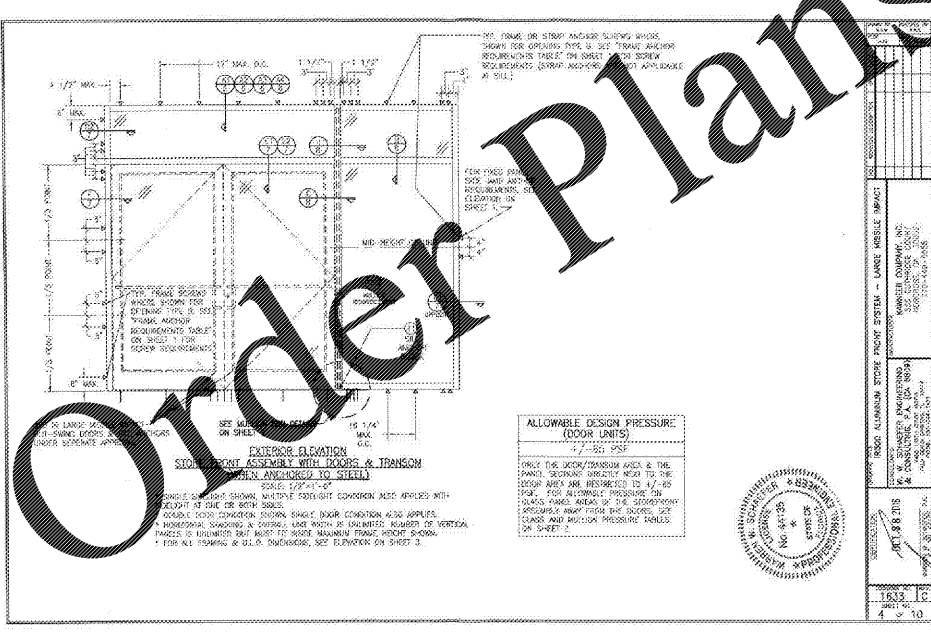
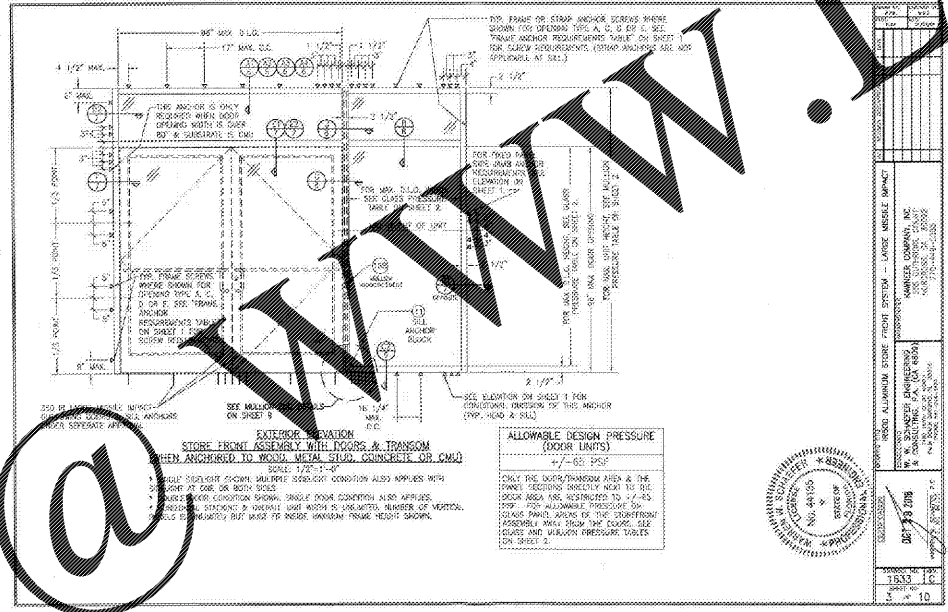
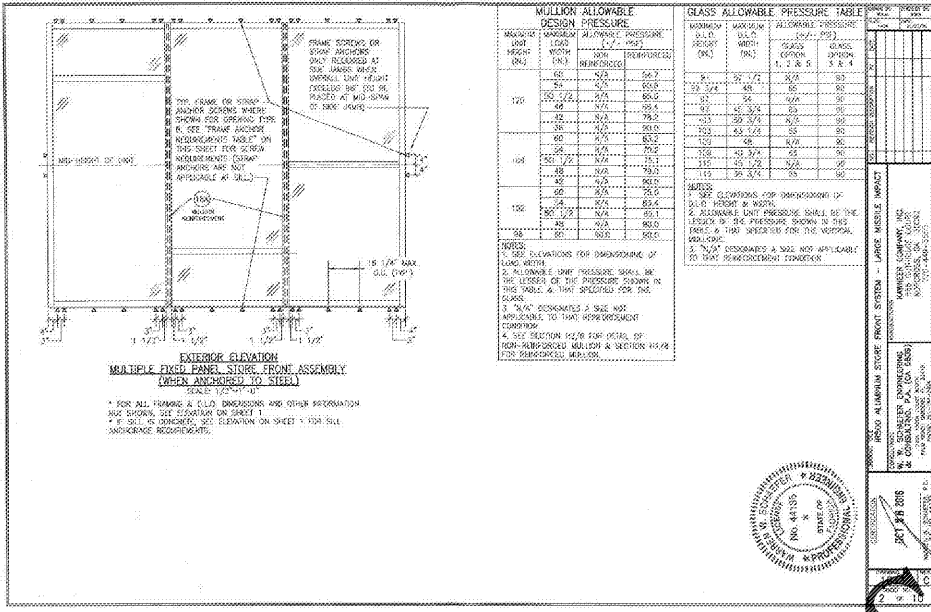
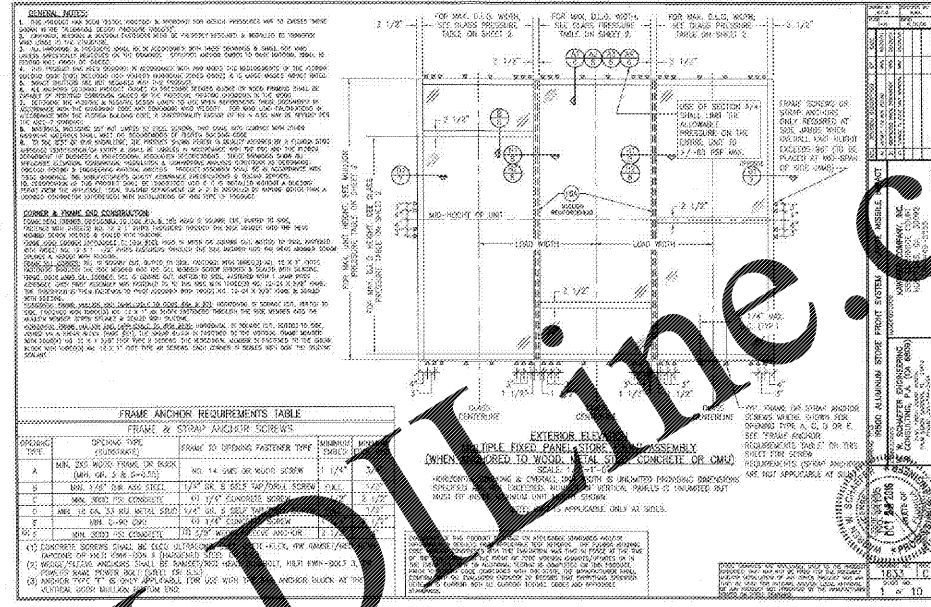
Installation requirements:  
See drawing No. 1633

Code compliance:  
Code section(s) considered with this evaluation:  
FBC Chapters 17 & 24

Notes:  
Million conditions stated in this approval have been tested in accordance with TAS-201, 202 & 203, ASTM E1330, ASTM E1885 & ASTM E1996 and meet the requirements of FBC.

Glass:  
All glass meets the current ASTM E1300 standard.

Test Standards applicable to the testing of this storefront system:



PANDA RESTAURANT GROUP INC.  
1683 Walnut Grove Ave.  
Rosemead, California  
91770  
Telephone: 626.799.9898  
Facsimile: 626.372.8288

All ideas, designs, arrangement and plans indicated or represented by this drawing are the property of Panda Express Inc. and were created for use on this specific project. None of these ideas, designs, arrangements or plans may be used or disclosed to any person, firm or corporation without the written permission of Panda Express Inc.

REVISIONS:

NO.	DESCRIPTION	DATE
1	ISSUED FOR BID & PERMIT	12-11-16
2	BID SET	01-30-19

ISSUE DATE:  
1 ISSUED FOR BID & PERMIT 12-11-16  
2 BID SET 01-30-19

DRAWN BY: DGS  
PANDA PROJECT # S8-19-06573  
ARCH PROJECT # P7336

**gph**  
www.gphcorp.com  
A Full Service A & E Firm

Plans Prepared By:  
GPH, Inc.  
500 West Fulton St.  
Sanford, FL 32771  
Ph: 407-322-8841

Licenses:  
Eng. C.O.A. No. 2750-E  
Survey L.B. No. CA-008-L5  
Arch. Lic. No. 285-342



PANDA EXPRESS  
WARM & WELCOME 2200  
ATLANTIC BLVD & MARKETPLACE DR  
JACKSONVILLE, FL 32225

FAD - 1.0

FLORIDA PRODUCT APPROVAL  
KAWNEER SERIES IR 500 STOREFRONT SYSTEM

TRUE WARM & WELCOME 2200