

PANDA RESTAURANT GROUP INC.
1683 Walnut Grove Ave.
Rosemead, California
91770
Telephone: 626.799.9898
Facsimile: 626.372.8288

All ideas, designs, arrangement and plans indicated or represented by this drawing are the property of Panda Express Inc. and were created for use on this specific project. None of these ideas, designs, arrangements or plans may be used by or disclosed to any person, firm, or corporation without the written permission of Panda Express Inc.

REVISIONS:

ISSUE DATE:

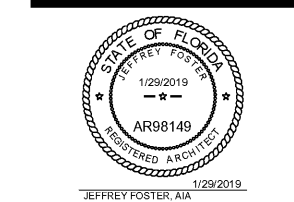
1	ISSUED FOR BID & PERMIT	12-11-18
2	BID SET	01-30-19

DRAWN BY: JO
PANDA PROJECT # S8-19-D6573
ARCH PROJECT # P7336

gph
www.gphcorp.com
A Full Service A & E Firm

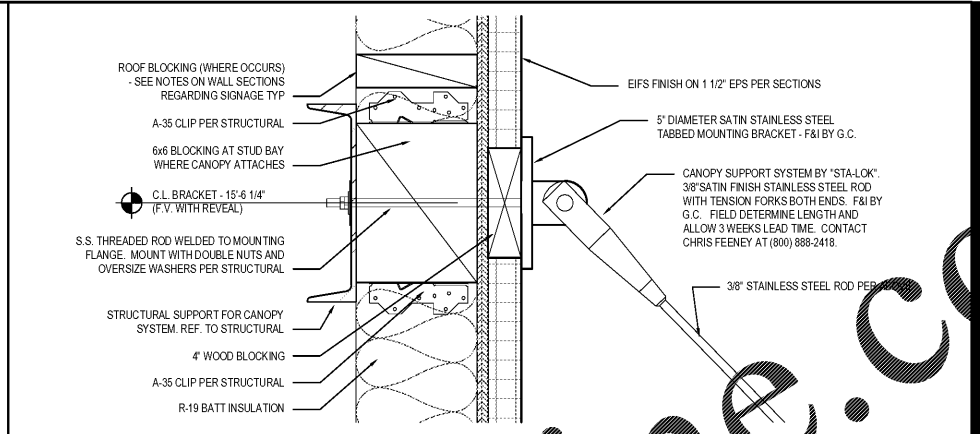
Plans Prepared By
GPH, Inc.
500 West Fulton St.
Sanford, FL 32771
Ph: 407-322-8841

Licenses:
Eng. C.O.A. No. 2750-E
Survey L.B. No. CA-669-LS
Arch. Lic. No. 285-342

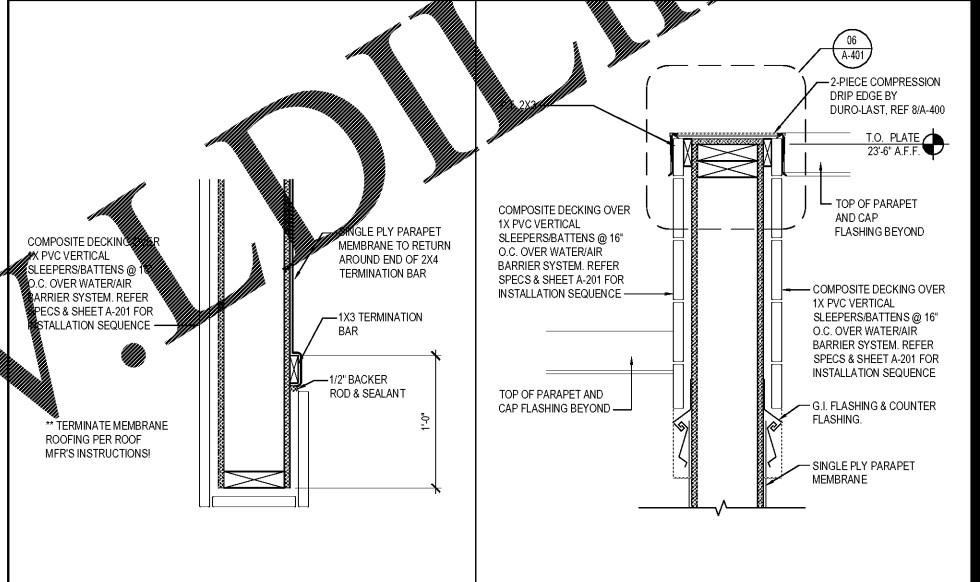


PANDA EXPRESS
WARM & WELCOME 2200
ATLANTIC BLVD & MARKETPLACE DR
JACKSONVILLE, FL 32225

A-305
WALL SECTIONS
TRUE WARM & WELCOME 2200

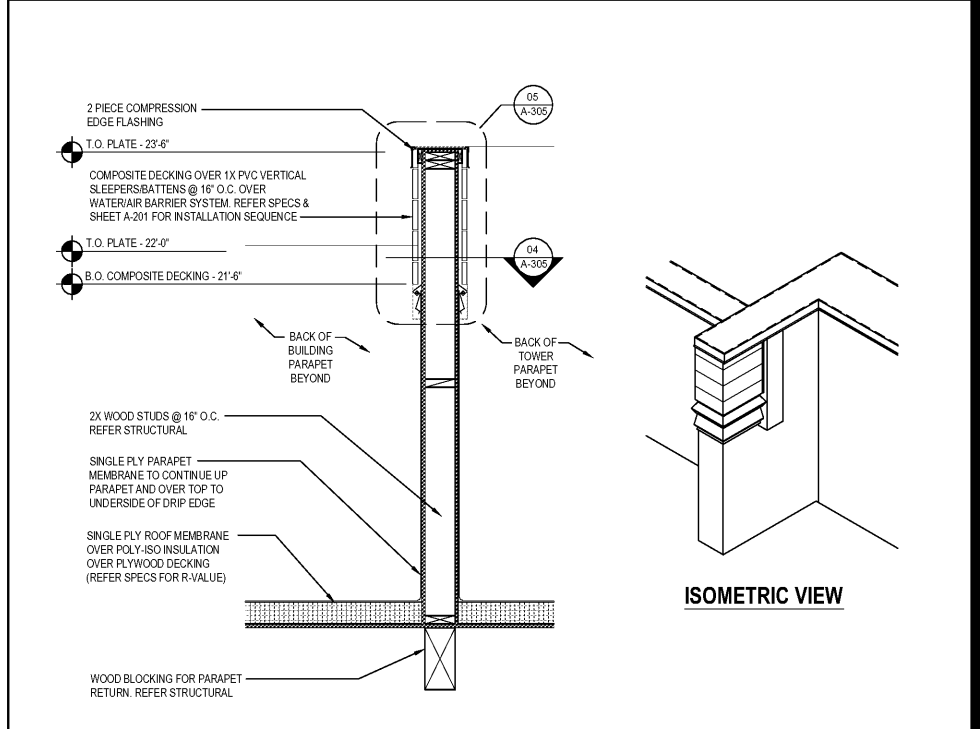


CANOPY SUPPORT BRACKET DETAIL 6
Scale= 3" = 1'-0" A-305



PLAN DETAIL 4
Scale= 1 1/2" = 1'-0" A-305

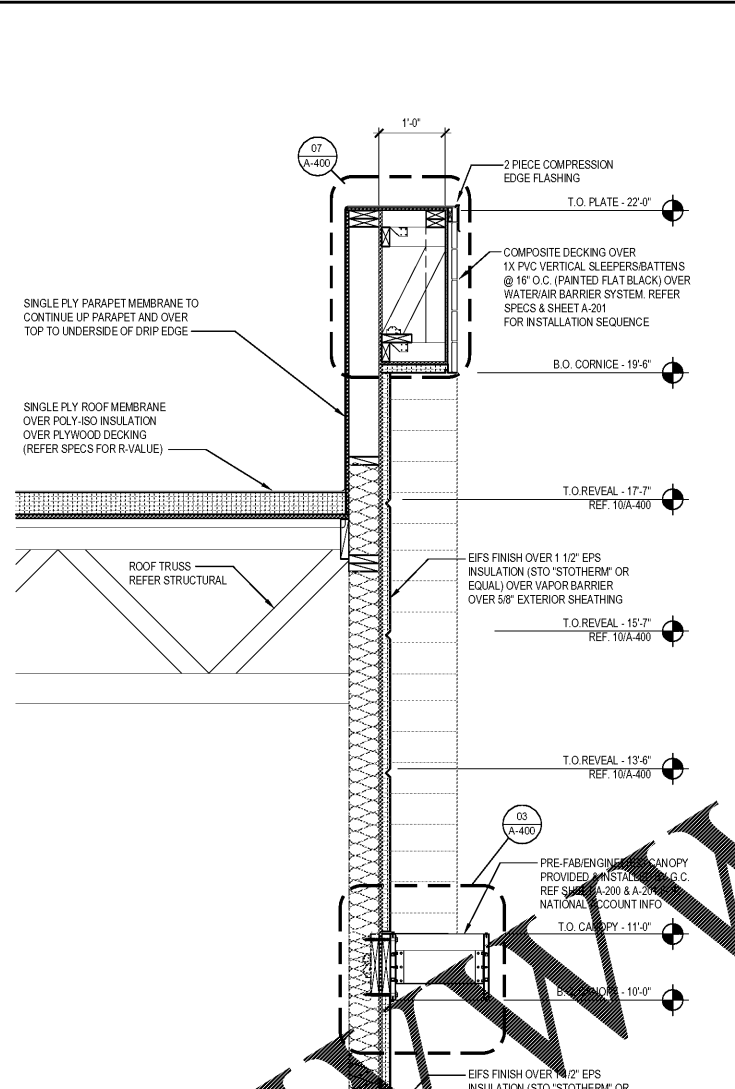
PLAN DETAIL 5
Scale= 1 1/2" = 1'-0" A-305



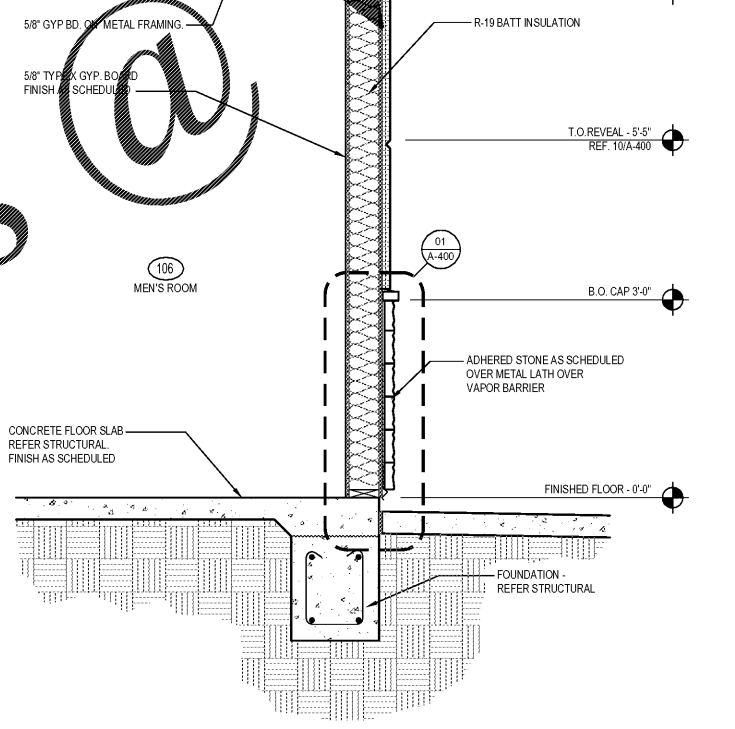
SECTION DETAIL
Scale= 3/4" = 1'-0" A-305

ISOMETRIC VIEW

SECTION AT PARAPET RETURN 3
Scale= 3/4" = 1'-0" A-305

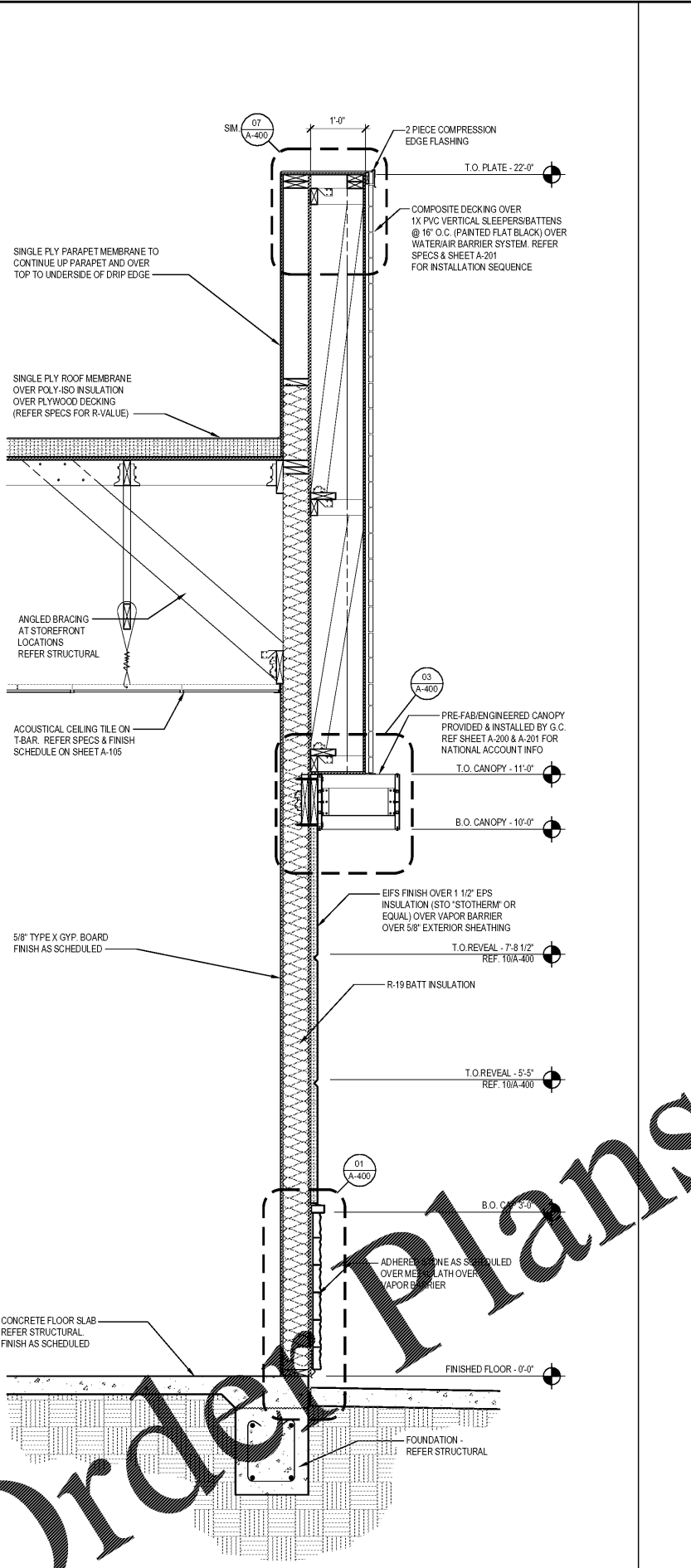


TOWER SECTION AT DRIVE-THRU SIDE 2
Scale= 3/4" = 1'-0" A-305



TOWER SECTION AT REAR 1
Scale= 3/4" = 1'-0" A-305

TOWER SECTION AT DRIVE-THRU SIDE 2
Scale= 3/4" = 1'-0" A-305



TOWER SECTION AT REAR 1
Scale= 3/4" = 1'-0" A-305

TOWER SECTION AT DRIVE-THRU SIDE 2
Scale= 3/4" = 1'-0" A-305

Order Plans

This item has been electronically signed and sealed by Jeffrey Foster, A.I.A. on January 29, 2019 using a digital signature. Printed copies of this document are not considered signed and sealed and the signature must be verified on any electronic copies.