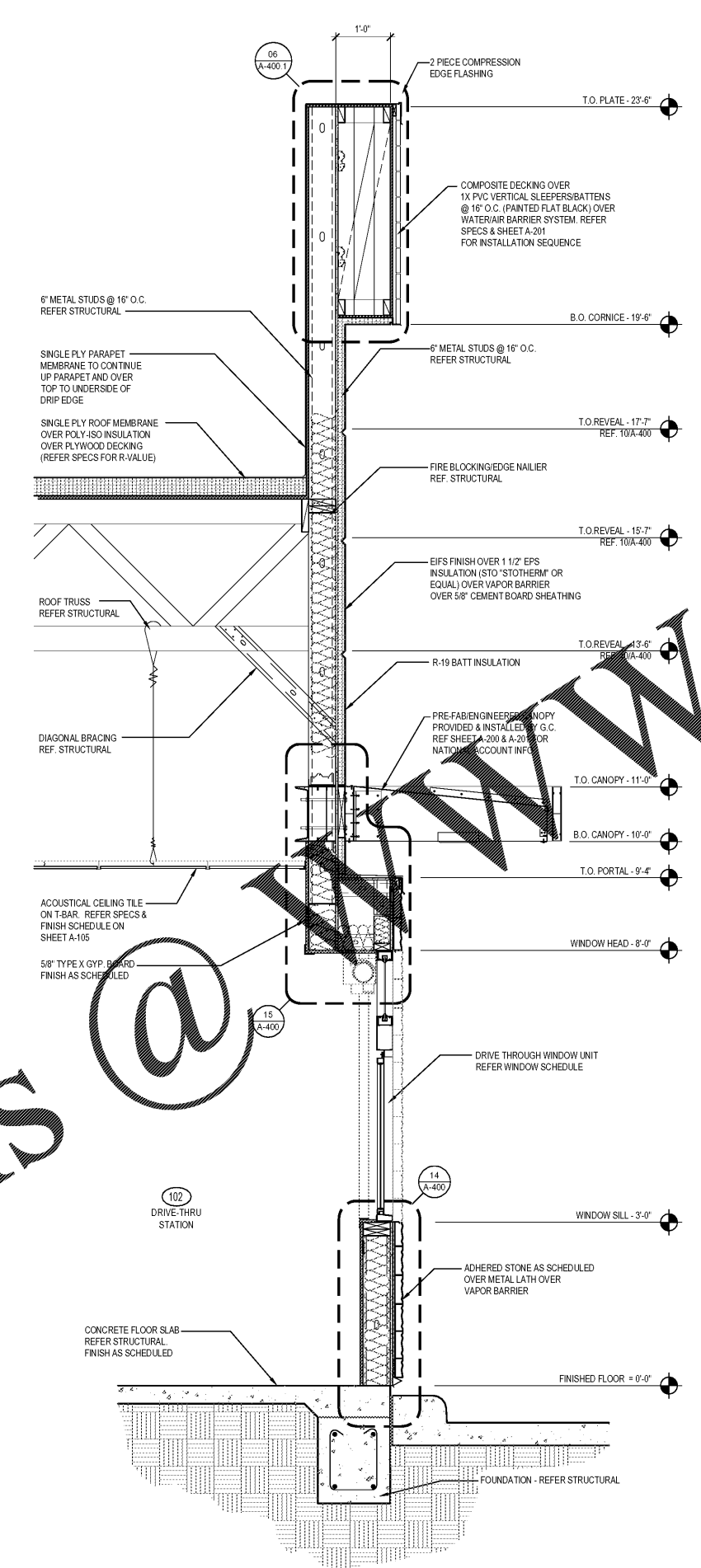
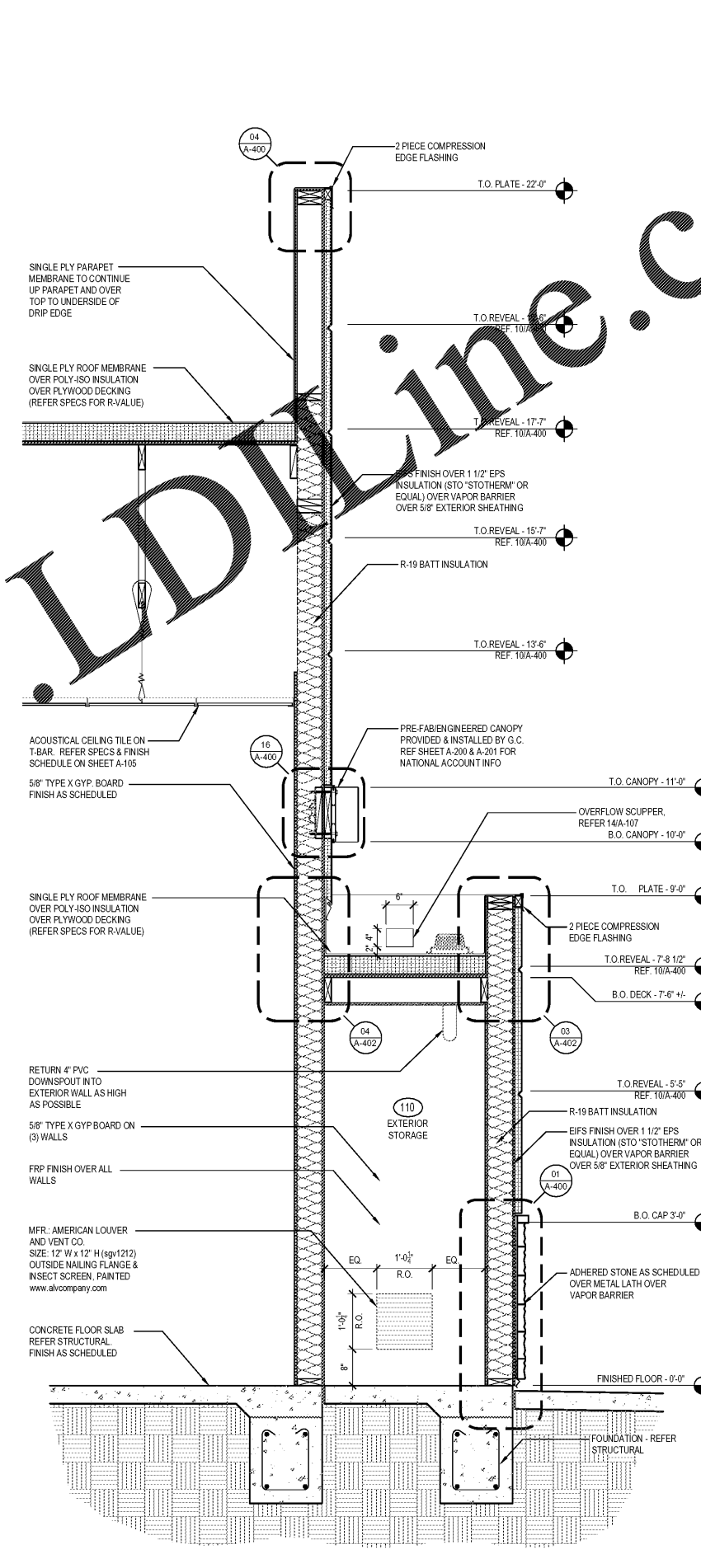


SECTION AT MIDDLE RIGHT PORTION OF DRIVE-THRU WALL 1  
Scale= 3/4" = 1'-0" A-304



SECTION AT DRIVE-THRU WINDOW 2  
Scale= 3/4" = 1'-0" A-304



SECTION 3  
Scale= 3/4" = 1'-0" A-304



PANDA RESTAURANT GROUP INC.  
1683 Walnut Grove Ave.  
Rosemead, California  
91770  
Telephone: 626.799.9898  
Facsimile: 626.372.8288

All ideas, designs, arrangement and plans indicated or represented by this drawing are the property of Panda Express Inc. and were created for use on this specific project. None of these ideas, designs, arrangements or plans may be used by or disclosed to any person, firm, or corporation without the written permission of Panda Express Inc.

REVISIONS:


ISSUE DATE:

1	ISSUED FOR BID & PERMIT	12-11-18
2	BID SET	01-30-19

DRAWN BY: JO  
PANDA PROJECT # S8-19-D6573  
ARCH PROJECT # P7336



PANDA EXPRESS  
WARM & WELCOME 2200  
ATLANTIC BLVD & MARKETPLACE DR  
JACKSONVILLE, FL 32225

A-304  
WALL SECTIONS

Order Plans

www.lldline.com

www.lldline.com

This item has been electronically signed and sealed by Jeffrey Foster, A.I.A. on January 29, 2019 using a digital signature. Printed copies of this document are not considered signed and sealed and the signature must be verified on any electronic copies.