

SCREW/FASTENING DTL.

WATER/AIR BARRIER

PRIMARY LAYER:
FLUID APPLIED WATER PROOFING AS SPECIFIED OVER ENTIRE SURFACE OF EXTERIOR SHEATHING AS SCHEDULED TO RECEIVE COMPOSITE DECKING.

SECONDARY LAYER:
15 POUND BUILDING FELT OVER ENTIRE SURFACE OF EXTERIOR SHEATHING AS SCHEDULED TO RECEIVE COMPOSITE DECKING.

WATER PROOF FLASHING:
4" TITE SEAL SELF ADHESIVE RUBBERIZED ASPHALT ROLL FLASHING BEHIND EACH BATTEN (PAINT FLAT BLACK)

MECHANICAL PATCH:
MASTIC OVER ALL MECHANICAL FASTENERS

CONSTRUCTION

EXTERIOR SHEATHING - REF. ARCHITECTURAL AND STRUCTURAL DETAILS
WALL STUD - REFER STRUCTURAL

SOLID PVC 1X6 SLEEPERBATTEN WHERE BUTT JOINT FALLS BETWEEN STUDS AND/OR AT END OF RUN (PAINT FLAT BLACK)

SOLID PVC 1X2 SLEEPERBATTEN OVER EACH STUD (PAINT FLAT BLACK)

STAINLESS STEEL FINISH SCREWS REFER SPECIFICATIONS BELOW

WOOD STUDS:
PROVIDE 2 1/2" GRIP-RITE (OR EQUAL) DECK SCREWS. POLYMER COATED, STAR DRIVE

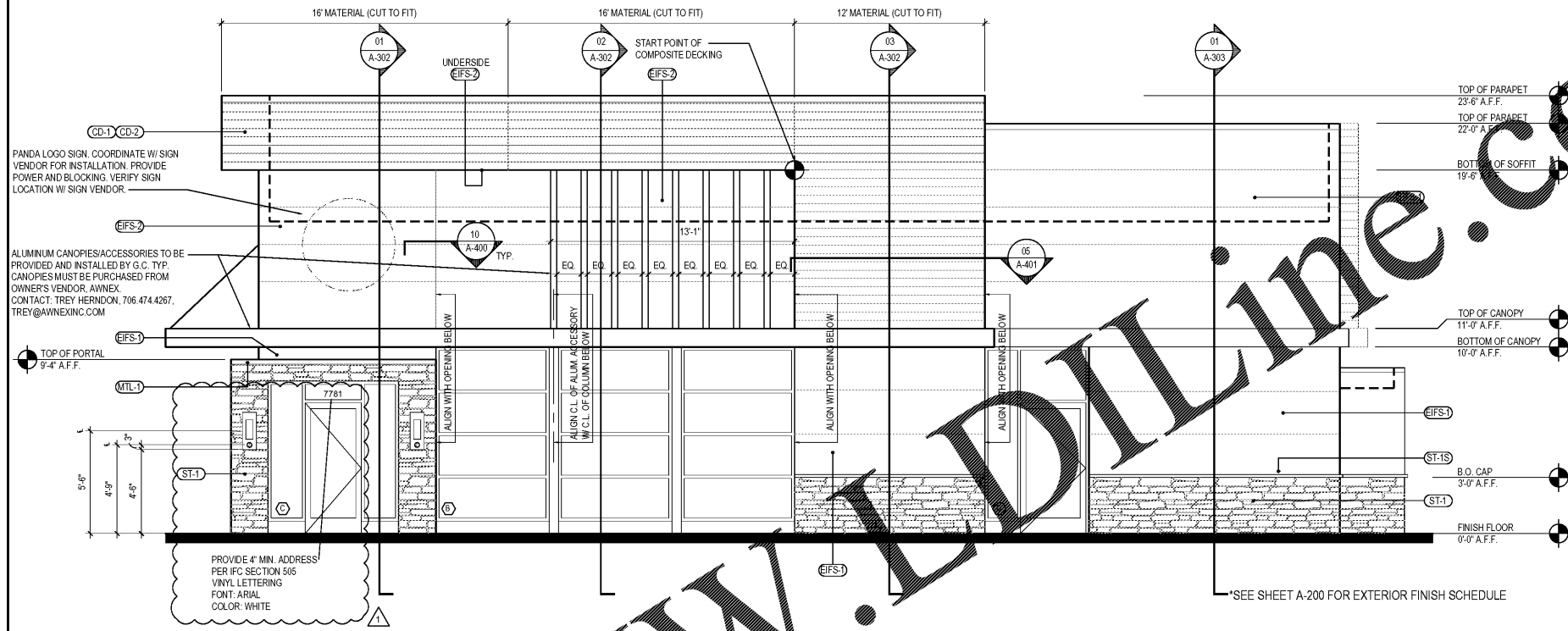
METAL STUDS:
PROVIDE 2 1/2" SIMPSON BUGLE HEAD SELF-DRILLING STAINLESS STEEL - #2 SQUARE DRIVE SCREWS WITH #3 DRILL POINT (TYPE 410 STAINLESS STEEL)

1/2" JOINT BETWEEN FINISHED BOARDS, @ ENDS & @ BUTT JOINTS - TYPICAL

SCREW FASTEN BATTENS @ 16" O.C. VERTICALLY

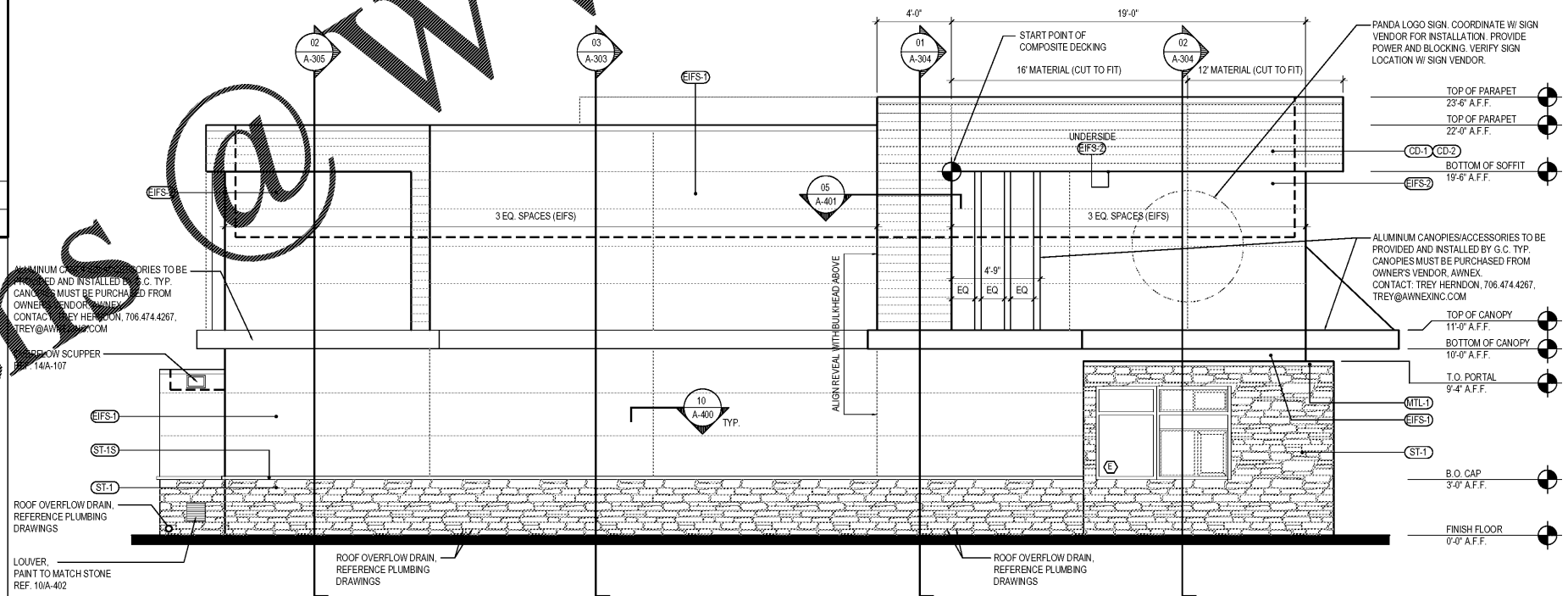
SURFACE MOUNTING FASTENING SYSTEM

COMPOSITE DECK FASTENING & WATER PROOFING DTLs 3
Scale= 1 1/2" = 1'-0" A-201



NORTH ELEVATION 2

Scale= 1/4" = 1'-0" A-201



SOUTH ELEVATION 1

Scale= 1/4" = 1'-0" A-201



PANDA RESTAURANT GROUP INC.
1683 Walnut Grove Ave.
Rosemead, California
91770
Telephone: 626.799.9898
Facsimile: 626.372.8288

All ideas, designs, arrangement and plans indicated or represented by this drawing are the property of Panda Express Inc. and were created for use on this specific project. None of these ideas, designs, arrangements or plans may be used by or disclosed to any person, firm, or corporation without the written permission of Panda Express Inc.

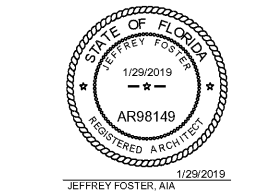
REVISIONS:

NO.	BLDG. DEPT. COMMENTS	DATE
1	ISSUED FOR BID & PERMIT	12-11-18
2	BID SET	01-30-19

ISSUE DATE:

1	ISSUED FOR BID & PERMIT	12-11-18
2	BID SET	01-30-19

DRAWN BY: JO
PANDA PROJECT # S8-19-D6573
ARCH PROJECT # P7336



PANDA EXPRESS
WARM & WELCOME 2200
ATLANTIC BLVD & MARKETPLACE DR
JACKSONVILLE, FL 32225

A-201

EXTERIOR ELEVATIONS

TRUE WARM & WELCOME 2200

Order Plans @ WWW.LDOnline.com

This item has been electronically signed and sealed by Jeffrey Foster, A.I.A. on January 29, 2019 using a digital signature. Printed copies of this document are not considered signed and sealed and the signature must be verified on any electronic copies.