

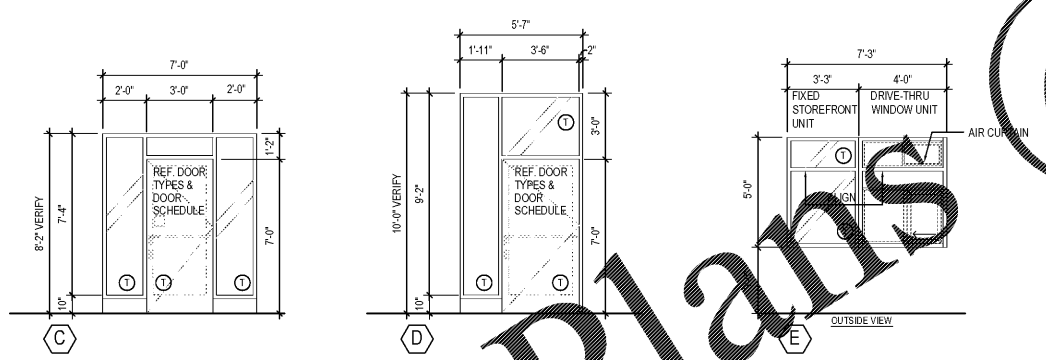
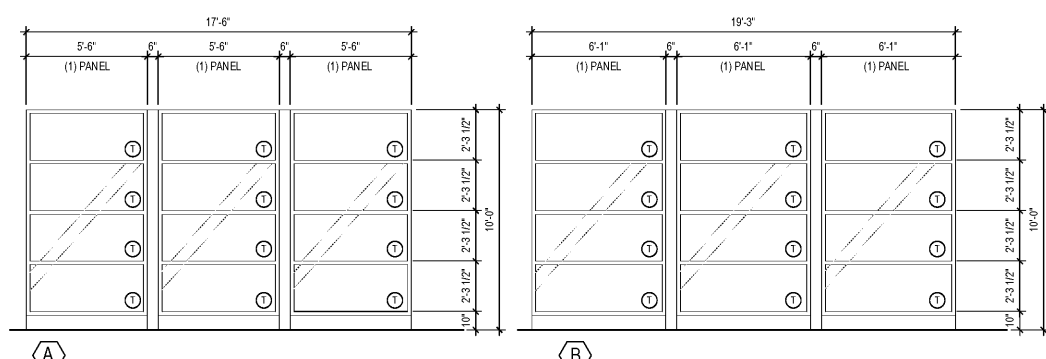
EXTERIOR FINISH SCHEDULE INSTALLED AND FURNISHED BY: G.C. UNLESS NOTED OTHERWISE

NO	MANUFACTURER	MFG#	COLOR	FINISH	NOTES
(EFS-1)	STO	STOTHERM ESSENCE SYSTEM	SW 6148 WOOL SKEN	FINE	BUILDING BODY
(EFS-2)	STO	STOTHERM ESSENCE SYSTEM	SW 7067 CITYSCAPE	FINE	BUILDING BODY
(ST-1S)	CORONADO STONE PRODUCTS	900 SERIES	#2 GREY	-	STONE CAP (3/8" VERTICAL JOINT - MORTAR TO MATCH STONE CAP)
(ST-1)	CORONADO STONE PRODUCTS	INDUSTRIAL LEDGE	SHALE GREY	-	ENTRY PORTAL & WAINSCOT CONTACT: (EAST COAST)LISA KILGORE: 864-962-1221
(CD-1)	FIBERON	HORIZON	IPE	60% MATERIAL COVERAGE - RANDOM MIX (NON-GROOVE)	COMPOSITE DECKING - CONTACT: BILL ROSS @ 704-756-1980 EMAIL: Bill@fiberondecking.com
(CD-2)	FIBERON	HORIZON	TUDOR BROWN	40% MATERIAL COVERAGE - RANDOM MIX (NON-GROOVE)	COMPOSITE DECKING - CONTACT: BILL ROSS @ 704-756-1980 EMAIL: Bill@fiberondecking.com
(MTL-1)	EXCEPTIONAL METALS	-	*PANDA EXPRESS IRON ORE*	-	CAP FLASHING

WINDOW SCHEDULE INSTALLED AND FURNISHED BY: G.C. UNLESS NOTED OTHERWISE

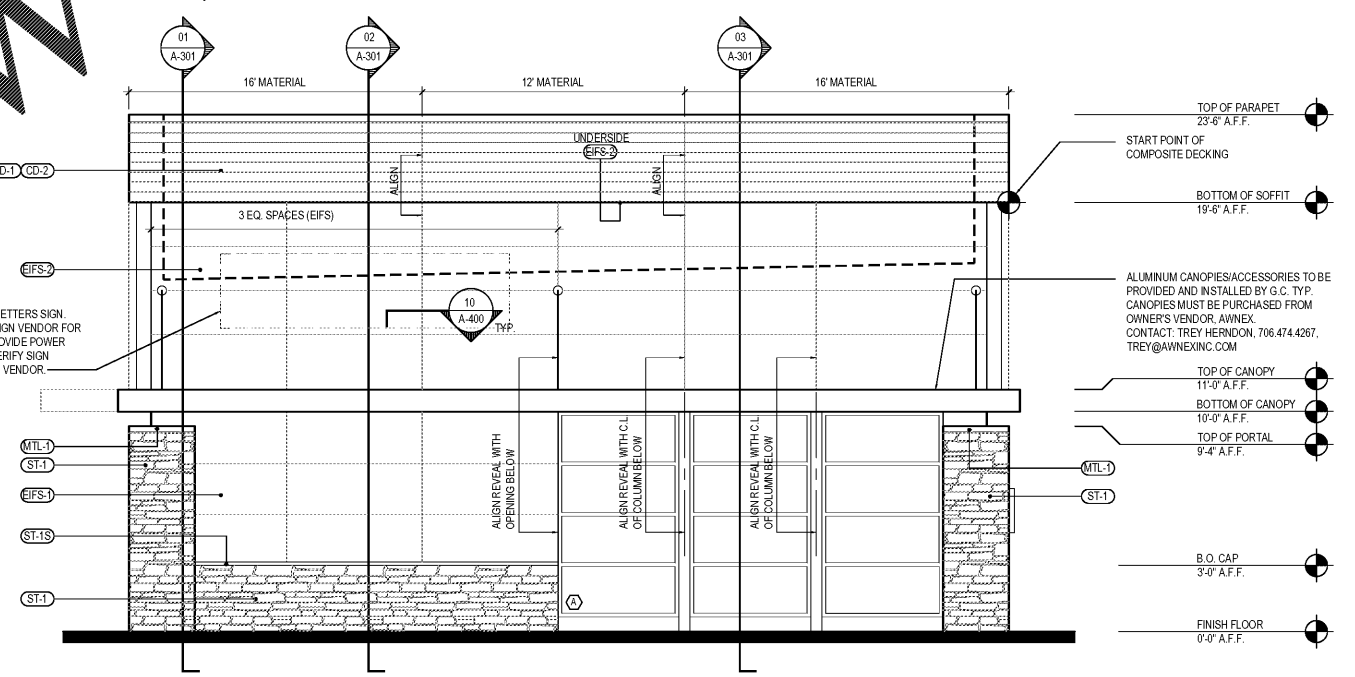
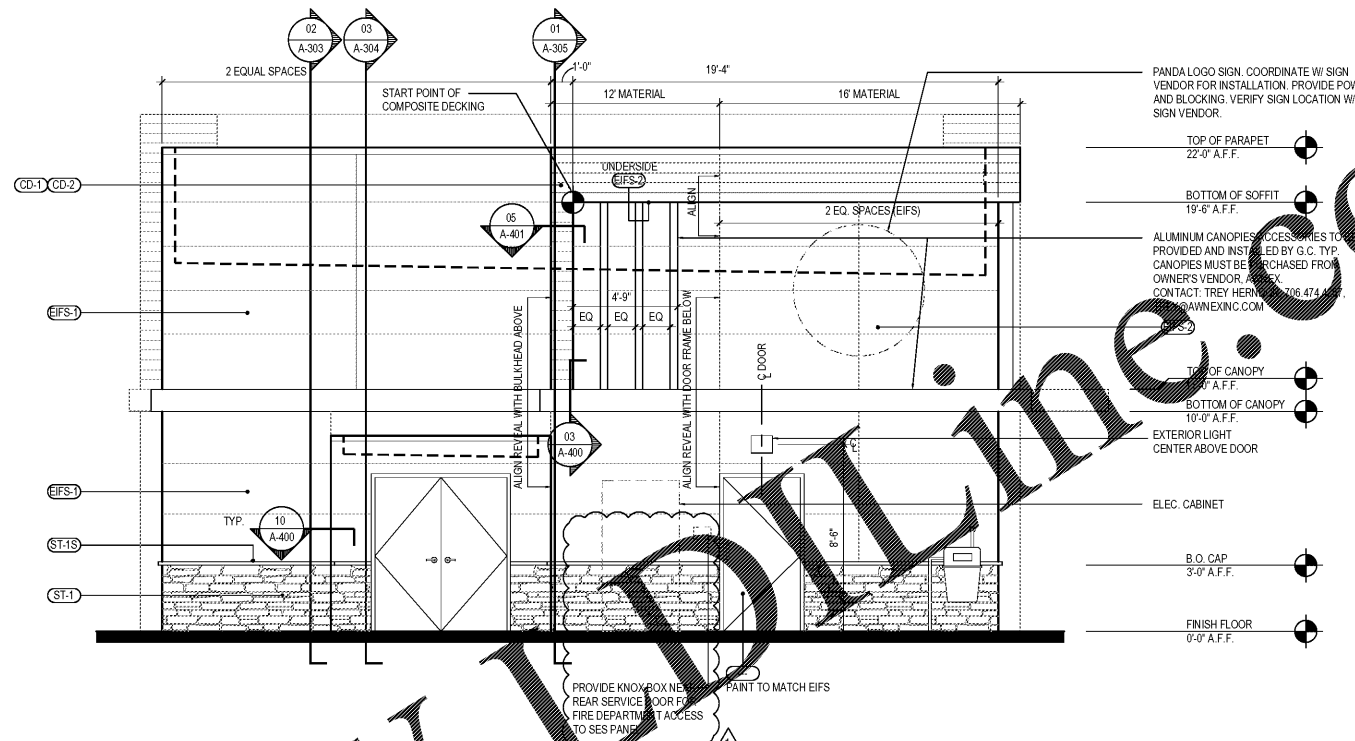
SYM	WIDTH	HEIGHT	GLASS	FRAME	REMARKS
(A)	17'-6"	10'-0"	1" INSULATED GLASS	DARK BRONZE ALUMINUM STOREFRONT	1" INSULATED GLAZING, IN 4.5' X 2" IN ANODIZED ALUMINUM FRAME
(B)	19'-3"	10'-0"	1" INSULATED GLASS	DARK BRONZE ALUMINUM STOREFRONT	1" INSULATED GLAZING, IN 4.5' X 2" IN ANODIZED ALUMINUM FRAME
(C)	7'-0"	8'-2"	1" INSULATED GLASS	DARK BRONZE ALUMINUM STOREFRONT	1" INSULATED GLAZING, IN 4.5' X 2" IN ANODIZED ALUMINUM FRAME
(D)	5'-7"	10'-0"	1" INSULATED GLASS	DARK BRONZE ALUMINUM STOREFRONT	1" INSULATED GLAZING, IN 4.5' X 2" IN ANODIZED ALUMINUM FRAME
(E)	7'-3 3/4"	59.5"	TEMPERED GLASS	DARK BRONZE ANODIZED ALUMINUM	QUIK-SERV (NON-HEATED AIR CURTAIN), ROUGH OPENING 48" X 60" SEE ADDITIONAL NOTE #5. CONTACT: WADE ARNOLD, 800-388-8307

- NOTES
- INSULATING GLASS PPG SOLARBAN 60 LOW E. WINTER U=0.25 SHGC: 0.39 VIS TRANS: 83% UV ENERGY: 46%
 - DOORS: FULL GLAZED DOORS W/10" KICK BASE. COLOR DARK BRONZE ANODIZED ALUMINUM FINISH. REFER HARDWARE SCHEDULE.
 - WINDOW DIMENSIONS ARE FOR BIDDING PURPOSES ONLY. G.C. TO VERIFY ACTUAL WINDOW DIMENSIONS PRIOR TO FABRICATION INSTALLATION. GLASS FACADE AND ENTRY DOORS TO BE DESIGNED, DETAILED, FACTORY FABRICATED AND SITE ASSEMBLED AND ERECTED.
 - MANUFACTURER: QUIK-SERV, MODEL SS-403SE-IP WITH THRU-BEAM PHOTO-ELECTRIC BAR. REGIONAL APPLICATION WITH CF-25 NON HEATED AIR CURTAIN OR CHF-25 HEATED AIR CURTAIN. TYPE OF AIR CURTAIN LISTED ON WINDOW SCHEDULE.
 - WINDOW SYSTEM SHALL COMPLY WITH APPLICABLE SECTION AND CHAPTER OF BUILDING CODE.
 - TEMPERED GLASS



WINDOW AND DOOR ELEVATIONS 3

Scale= NTS A-200



PANDA RESTAURANT GROUP INC.
1683 Walnut Grove Ave.
Rosemead, California
91770
Telephone: 626.799.9898
Facsimile: 626.372.8288

All ideas, designs, arrangement and plans indicated or represented by this drawing are the property of Panda Express Inc. and were created for use on this specific project. None of these ideas, designs, arrangements or plans may be used by or disclosed to any person, firm, or corporation without the written permission of Panda Express Inc.

REVISIONS:
1 BLDG. DEPT. COMMENTS 01-30-19

ISSUE DATE:
1 ISSUED FOR BID & PERMIT 12-11-18
2 BID SET 01-30-19

DRAWN BY: JO
PANDA PROJECT # S8-19-D6573
ARCH PROJECT # P7336



PANDA EXPRESS
WARM & WELCOME 2200
ATLANTIC BLVD & MARKETPLACE DR
JACKSONVILLE, FL 32225

A-200

EXTERIOR ELEVATIONS

TRUE WARM & WELCOME 2200

This item has been electronically signed and sealed by Jeffrey Foster, A.I.A. on January 29, 2019 using a digital signature. Printed copies of this document are not considered signed and sealed and the signature must be verified on any electronic copies.