

FURNITURE SCHEDULE

Item Code	Type	Material		L x W x H
T-A1a	LIVE EDGE 4'-0"	WALNUT	PANDA VENDOR	4'-0" L X 28" W X 2" THICK
T-A1b	LIVE EDGE 6'-0"	WALNUT	PANDA VENDOR	6'-0" L X 28" W X 2" THICK
T-A1c	LIVE EDGE 8'-0"	WALNUT	PANDA VENDOR	8'-0" L X 28" W X 2" THICK
T-A1d	LIVE EDGE 10'-0"	WALNUT	PANDA VENDOR	10'-0" L X 28" W X 2" THICK
T-B1a	2 TOP TABLE	QUARTZ - TETON BEIGE	PANDA VENDOR	21" L X 24" W
T-B1b	4 TOP TABLE	QUARTZ - TETON BEIGE	PANDA VENDOR	24" L X 48" W
T-B1c	4 TOP TABLE 40A	QUARTZ - TETON BEIGE	PANDA VENDOR	30" L X 48" W
T-B2a	ROUND TABLE 42"	QUARTZ	PANDA VENDOR	42" DIAMETER
T-C1a	2 TOP SEATTEE	LAMINATE W/ METAL EDGE OILED WALNUT	PANDA VENDOR	21" L X 24" W
T-C1b	4 TOP SEATTEE	LAMINATE W/ METAL EDGE OILED WALNUT	PANDA VENDOR	48" L X 24" W
T-C2a	ROUND TABLE 24" DIA	LAMINATE W/ METAL EDGE OILED WALNUT	PANDA VENDOR	24" DIAMETER
T-C2b	ROUND TABLE 30" DIA	LAMINATE W/ METAL EDGE OILED WALNUT	PANDA VENDOR	30" DIAMETER

C-A1a	SINGLE BOOTH 41"	WALNUT W/ EVOLUTION SEERMENT FABRIC	PANDA VENDOR	41" L X 35 1/4" H
C-A1b	SINGLE BOOTH 47"	WALNUT W/ EVOLUTION SEERMENT FABRIC	PANDA VENDOR	47" L X 35 1/4" H
C-A1c	SINGLE BOOTH 59"	WALNUT W/ EVOLUTION SEERMENT FABRIC	PANDA VENDOR	59" L X 35 1/4" H
C-A1d	BOOTH BACK TO BACK 47"	WALNUT W/ EVOLUTION SEERMENT FABRIC	PANDA VENDOR	47" L X 35 1/4" H
C-A1e	BOOTH BACK TO BACK 41"	WALNUT W/ EVOLUTION SEERMENT FABRIC	PANDA VENDOR	41" L X 35 1/4" H
C-A1f	BOOTH BACK TO BACK 59"	WALNUT W/ EVOLUTION SEERMENT FABRIC	PANDA VENDOR	59" L X 35 1/4" H

B-S1a	BEAM BASE 3" H	HOT ROLL STEEL W/ LOW GLOSS CLEAR COAT	PANDA VENDOR	FOR 34" H TABLE
B-S2a	FREE STANDING CRISS CROSS		PANDA VENDOR	FOR 30" ROUND TABLE
B-S2b	FREE STANDING CRISS CROSS		PANDA VENDOR	FOR 21" X 24" TABLE
B-S3a	BOLT DOWN		PANDA VENDOR	FOR 30" H TABLE
B-S4a	CORE DRILL		PANDA VENDOR	FOR 30" H TABLE
B-S5a	ST DOWN BASE		PANDA VENDOR	FOR 34" H EDGE TABLE
B-B1	SPECIAL BRACKETS		PANDA VENDOR	FOR MOISTY PANEL

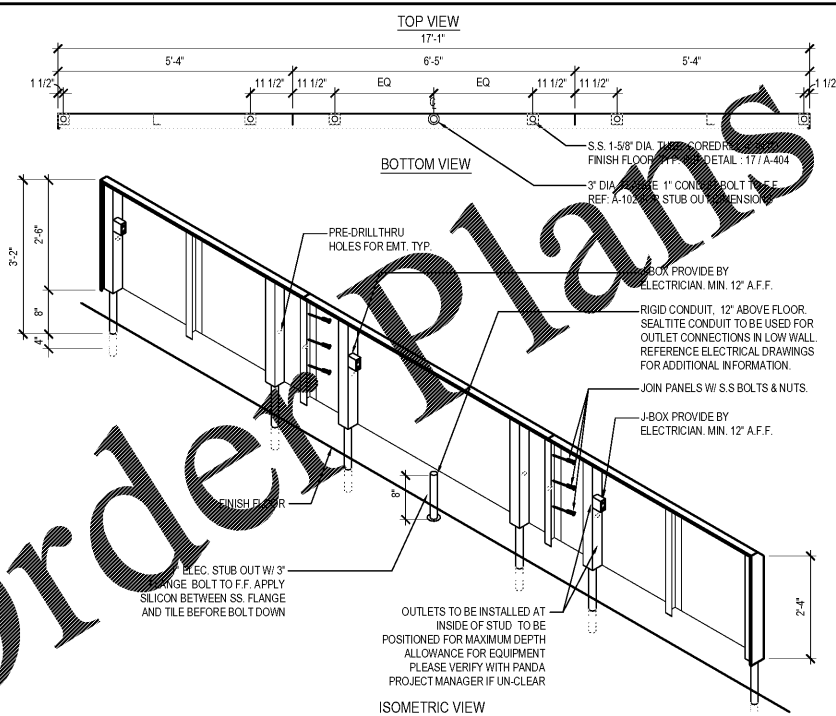
F-A1	TRASH BIN	TETON BEIGE OILED WALNUT	PANDA VENDOR	20" L X 27" W
F-A2a	TRASH BIN W/ LEFT BROOM HOLDER	TETON BEIGE OILED WALNUT	PANDA VENDOR	20" L X 27" W
F-A2b	TRASH BIN W/ RIGHT BROOM HOLDER	TETON BEIGE OILED WALNUT	PANDA VENDOR	20" L X 27" W
F-B1	TRASH LINER W/ CASTERS		PANDA VENDOR	
F-C1a	LEFT BROOM HOLDER	OILED WALNUT	PANDA VENDOR	
F-C1b	RIGHT BROOM HOLDER	OILED WALNUT	PANDA VENDOR	

L-A1	LOW WALL 5'-0"	OILED WALNUT HORIZONTAL GRAIN	PANDA VENDOR	5'-0" L X 3'-0" H
L-A2	LOW WALL 6'-0"	OILED WALNUT HORIZONTAL GRAIN	PANDA VENDOR	6'-0" L X 3'-0" H

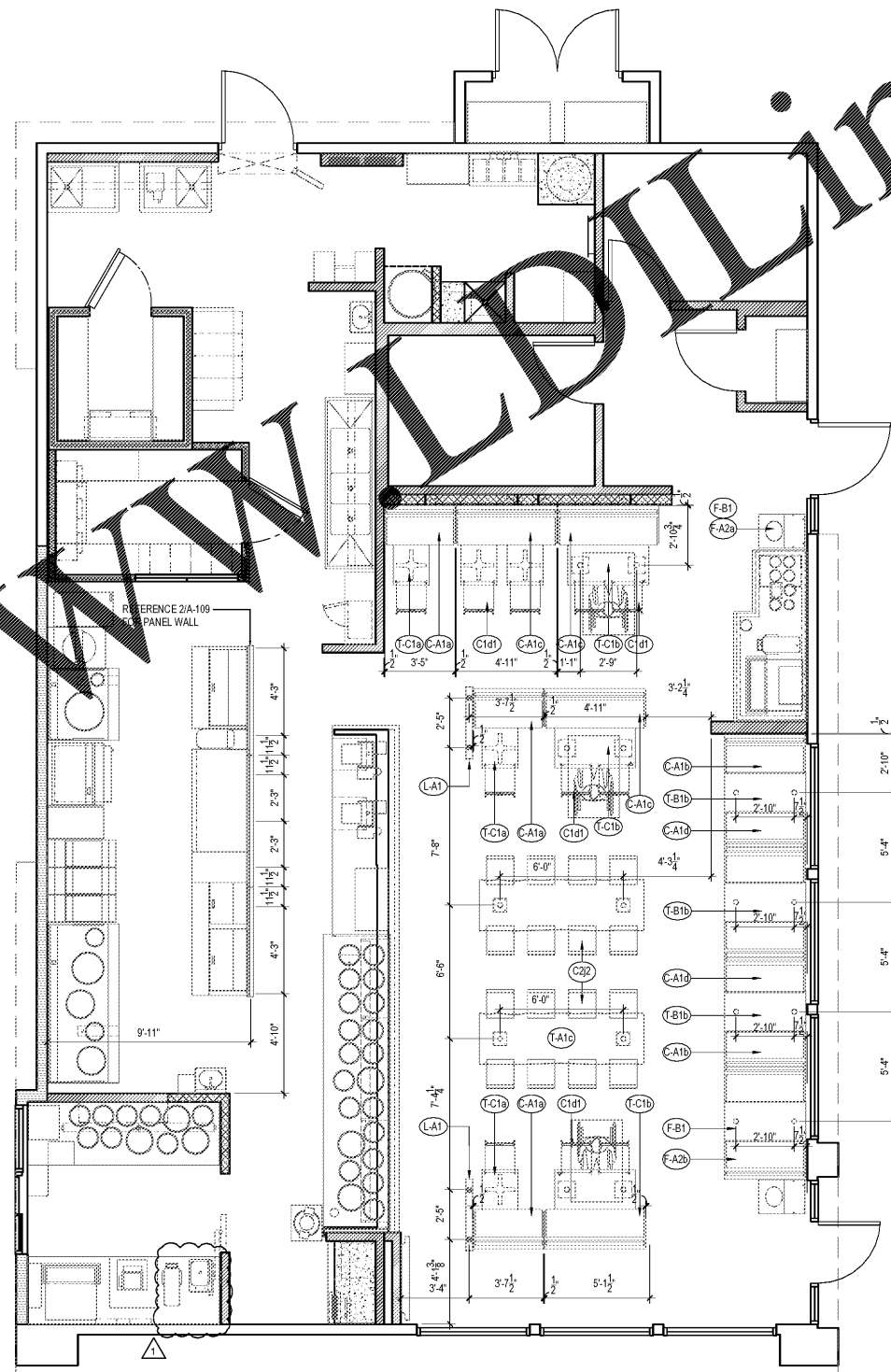
CHAIR SCHEDULE

Item Code	Type	Material		L x W x H
WALNUT PALLET				
C-1n	HARDWOOD DINING CHAIR	WALNUT	PANDA VENDOR	18" H
C-2B	CHON CHON COUNTER STOOL	WALNUT	PANDA VENDOR	22" H
OAK PALLET				
C-1d1	PANDA DINING CHAIR W/ BACK	OSK	PANDA VENDOR	18" H
C-2J	PANDA COUNTER STOOL, NO BACK	OSK (PREFERRED STOOL)	PANDA VENDOR	22" H
C-2g	PANDA COUNTER STOOL, W/ BACK	OSK (OPTIONAL)	PANDA VENDOR	22" H

NOTE:
PANDA TEAM TO SELECT CHAIR PALLET WITH MANUFACTURER



STAINLESS STEEL OUTLET PANEL 2
Scale= NTS A-109



FURNITURE LOCATION PLAN 1
Scale= 1/4" = 1'-0" A-109

NOTE:
DIMENSIONS ARE FROM INTERIOR WALL
REFER TO VENDOR PACKET FOR ADDITIONAL FURNITURE INFORMATION.
FINAL CORE DRILL LOCATIONS FOR FURNITURE / EQUIPMENT SHALL BE VERIFIED WITH PANDA EXPRESS DESIGN MANAGER PRIOR TO DRILLING.



PANDA RESTAURANT GROUP INC.
1683 Walnut Grove Ave.
Rosemead, California
91770
Telephone: 626.799.9898
Facsimile: 626.372.8288

All ideas, designs, arrangement and plans indicated or represented by this drawing are the property of Panda Express Inc. and were created for use on this specific project. None of these ideas, designs, arrangements or plans may be used by or disclosed to any person, firm, or corporation without the written permission of Panda Express Inc.

REVISIONS:

NO.	BLDG. DEPT. COMMENTS	DATE
1	ISSUED FOR BID & PERMIT	12-11-18
2	BID SET	01-30-19

ISSUE DATE:

1	ISSUED FOR BID & PERMIT	12-11-18
2	BID SET	01-30-19

DRAWN BY: JO
PANDA PROJECT # S8-19-D6573
ARCH PROJECT # P7336

cph
www.cphcorp.com
A Full Service A & E Firm

Prepared By: **CPI, Inc.**
500 West Fulton St.
Sanford, FL 32771
Ph: 407-322-8841

Licenses:
Eng. C.O.A. No. 2750-E
Survey L.B. No. CA-669-LS
Arch. Lic. No. 285-342



PANDA EXPRESS
WARM & WELCOME 2200
ATLANTIC BLVD & MARKETPLACE DR
JACKSONVILLE, FL 32225

A-109

FURNITURE PLAN

TRUE WARM & WELCOME 2200

This item has been electronically signed and sealed by Jeffrey Foster, A.I.A. on January 29, 2019 using a digital signature. Printed copies of this document are not considered signed and sealed and the signature must be verified on any electronic copies.