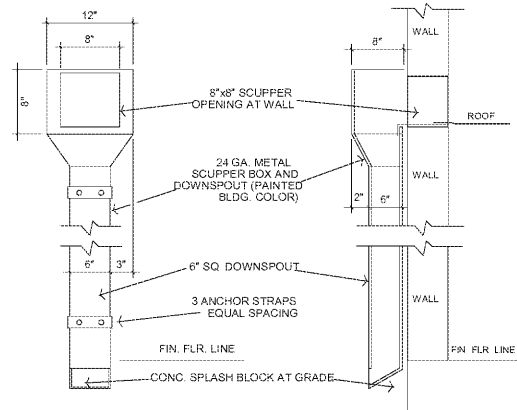


TYPICAL COOLER COND. INSTALLATION SCHEMATIC

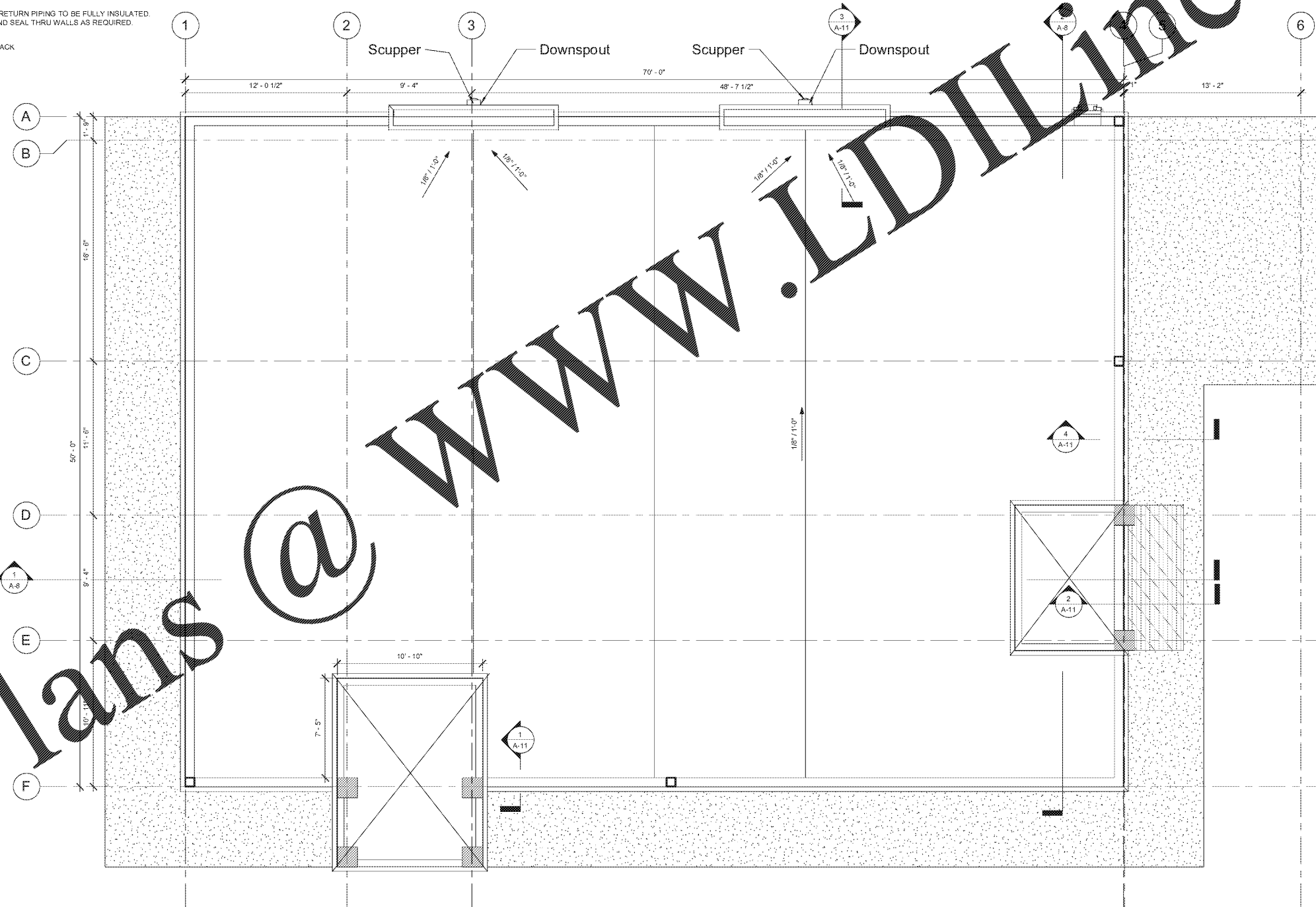
N.T.S.



METAL SCUPPER BOX AND DOWNSPOUT DETAIL

N.T.S.

- 4 LAYER BITUMINOUS BUILT-UP ROOF SYSTEM**
1. Steel Roof Joists
  2. Steel Deck - No. 22 MSG min. ga. min. fluted depth 1-1/2" w/ no perforations. Welded or mechanically fastened to supports in accordance with deck manufacturer's recommendations.
  3. Vapor Barrier - (Optional) 6 mil. min. (or equiv.)
  4. Insulation Board - Classified by Und. Lab. (Roofing Materials and Systems Directory, Roof Deck Construction, Building Units). [See Cornell Corp. "Vent-Top ThermoCal X1" OR "Vent-Top ThermoCal X2" (or equiv.)]
  5. Roof Covering - Built-up from hot mopped materials Classified by UL. [Authorities having jurisdiction should be consulted to which class of roof coverings will be acceptable in each location.]
  6. Mineral Capping Membrane - (inbetween layers of hot mop).



**ROOF PLAN**  
1/4" = 1'-0"

Order Plans @

WWW.LDILINE.COM

CUSTOMER:  
**GIANT OIL INC**  
1806 N. FRANKLIN ST  
TAMPA, FL 33607

SITE ADDRESS:  
**BP STATION**  
3009 GULF TO BAY BLVD  
CLEARWATER, FL 34616

ENGINEER OF RECORD:  
**AEC Services, Inc.**  
RON FAIR, P.E.  
FL # 50738 License No. 9277 OR 9001445

1518 ALIBON WOODS LANE  
TAMPA, FL 33624-1234  
(813) 984-1234  
www.aecservicesinc.com

GO161712	
NO.	DESCRIPTION
6	JOB NO.
5	DWG Name
4	XREF Name
3	SCALE
2	DATE
1	DRAWN BY
	CHECKED
	DATE CHECKED
	APPROVAL
	APPROVER

ROOF PLAN

S-6