

GENERAL NOTES:
 1. ALL JAMB, HEAD, SILL AND DOOR STYLE AND RAIL ARE CLEAR ANODIZED ALUMINUM.
 2. ALL JAMB, HEAD, SILL, MULLIN AND MULLION ARE R 300 FRAMING.
 3. ALL DOOR STYLE AND RAILS ARE HAWNEER 300 FRAMING.

MAXIMUM MULLION SPACINGS	HEIGHT	WID TH
FROM 0'-0" UP TO 8'-0"	4'-0"	4'-0"
FROM 8'-0" UP TO 12'-0"	4'-0"	4'-0"
FROM 12'-0" UP TO 16'-0"	4'-0"	4'-0"
FROM 16'-0" UP TO 20'-0"	4'-0"	4'-0"

DESIGN PRESSURE (DP)	MAX. DAYLIGHT OPENING WIDTH	DESIGN PRESSURE
0.5 psf	0'-0"	+1.50
0.7 psf	0'-0"	+1.50
0.9 psf	0'-0"	+1.50

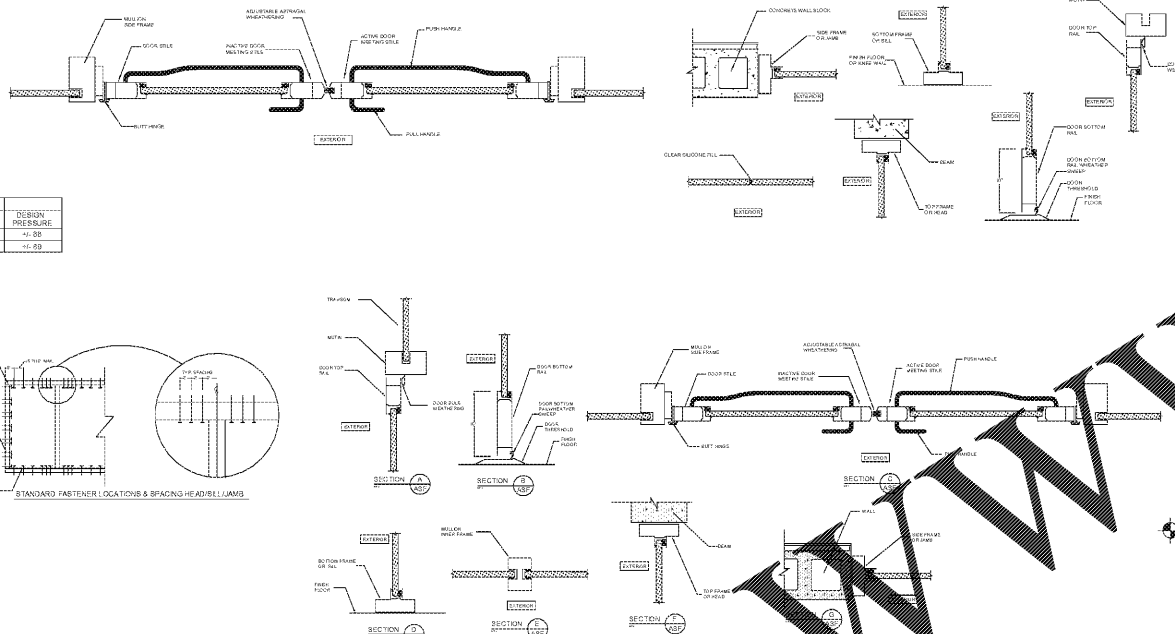
GLAZING SCHEDULE PER ASTM E 1363	GLASS TYPE	MAX. DAYLIGHT OPENING SIZE
3/16" VIKALON S108HSGARD	SEE DESIGN PRESSURE TABLE	SEE DESIGN PRESSURE TABLE
TYPICAL GLASS SIZE = DAYLIGHT OPENING + 1/4"		

DOOR HARDWARE SETS
 THRESHOLD: KAWNEER No. 37 5/2" CLEAR ANODIZED ALUMINUM FINISH.
 GRABBAR: KAWNEER No. 1000 CLEAR ANODIZED ALUMINUM FINISH.
 WITH BOLT 1/2" THICK, KEY CUT SIDE, THUMB TURN INSIDE.
 SLIC: STRIKE KAWNEER No. 1000 CLEAR ANODIZED ALUMINUM FINISH.
 ACTION 24 V TRANSFORMER WITH RECTIFIER MOUNTED IN STRIKE FRAME.
 LATCH LOCK: KAWNEER No. 8010 R/C No. 4000 THRESHOLD, KEY CUT SIDE,
 THUMB TURN INSIDE, MOUNT IN STYLE.
 HINGES: CONTINUED BALL BEARING BUTT HINGES.
 CLOSER: NORTON No. 1000 BACK CHECK WITHOUT HOLD OPEN.
 PULL: FULL SET KAWNEER 6710E FULL & 6710E 1/2" PUSH BAR, PUSH
 PAD AND FULL HANDLE ARE 20 BLACK FINISH.
 SAFETY CHAIN: BENTON ET NO. 100 BRIGHT ZINC PLATED WITH VINYL COVER,
 KEY KEY LOCKS ALR.
 FINISH: UNLESS NOTED ALL DOOR HARDWARE TO HAVE CLEAR FINISH.

FASTENER SCHEDULE

SUBSTRATE	MATERIAL	DESCRIPTION	MIN. EMBED.
WOOD	304 STAINLESS STEEL	5/16" DIA SHEET METAL SCREW	1 1/2" IN P.T. BOLT/NER FINE
STEEL	304 STAINLESS STEEL	5/16" DIA. SELF DRILLING	3/8" THICK OR 1/8" DIA. 20/80
CONCRETE / CMU	304 STAINLESS STEEL	5/16" DIA. EPOXY TOP TONGUE TAPCON	1 3/4" HEAD SILL - 1 1/2" JAMB

DOOR SCHEDULE										
DR.NO	SIZE	THICKNESS	DOOR TYPE	LOCATION	DOOR MATERIAL	FRAME MATERIAL	FIRE RATING	FINISH	HARDWARE SET	REMARKS
1	DBL 3070	1 3/4"	A	ENTRY	GLASS/ALUM	ALUM	N/A	CLEAR	1	STOREFRONT WDW SYSTEM W/ SWEEPS (HEADER HEIGHT AT + 7'-2")
2	3068	1 3/4"	B	OFFICE (EXTERIOR)	SC METAL	H.M	MFR	SEM-GLOSS ENAM. (WHT.)	3	1 1/2 HR FIRE RATING EXIT DOOR
3	3068	1 3/4"	B		HOLLOW METAL	H.M	N/A	SEM-GLOSS ENAM. (WHT.)	2	12"x12" LOUVER AND ONEWAY MIRR. WDW.
4	3068	1 3/4"	B	MEN'S RESTROOM	HOLLOW METAL	H.M	N/A	SEM-GLOSS ENAM. (WHT.)	4	A.D.A. SIGNAGE (by G.C.)
5	3068	1 3/4"	B	ELECTRICAL ROOM	HOLLOW METAL	H.M	N/A	SEM-GLOSS ENAM. (WHT.)	3	
6	3068	1 3/4"	B	WOMEN'S RESTROOM	HOLLOW METAL	H.M	N/A	SEM-GLOSS ENAM. (WHT.)	4	A.D.A. SIGNAGE (by G.C.)
7	3066	1 3/4"		COLD STORAGE DOOR						FURNISHED BY COOLER MFR. INSTALLED BY GENERAL CONTRACTOR
8	3066	1 3/4"		FREEZER STORAGE DOOR						FURNISHED BY COOLER MFR. INSTALLED BY GENERAL CONTRACTOR
9	2870	1 3/4"		BEER CAVE						BEER CAVE STORAGE DOOR
10	3070	1 3/4"		WALK IN COOLER	HOLLOW METAL	H.M	N/A			



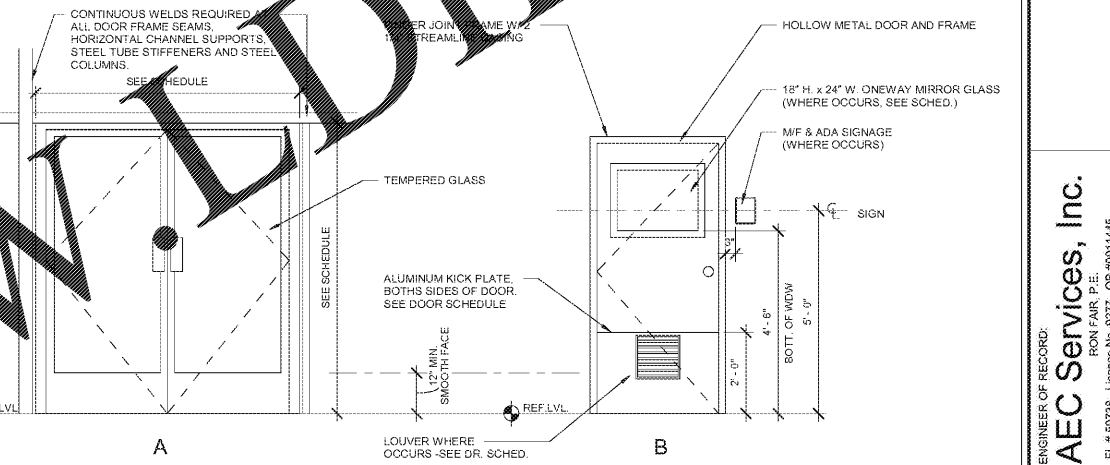
EXIT PASSAGE AND EXIT DOOR NOTES:
 1. ALL EXIT DOORS SHALL BE EQUIPPED WITH LEVER TYPE HARDWARE, PANIC BARS, PUSH-PULL ACTIVATING BARS DESIGNED TO PROVIDE PASSAGE WITHOUT REQUIRING THE ABILITY TO GRASP THE OPENING HARDWARE.
 2. EXIT DOORS SHALL BE OPENABLE FROM THE INSIDE WITHOUT USE OF A KEY OR ANY SPECIAL KNOWLEDGE OR EFFORT.
 3. EXITS SHALL BE ILLUMINATED AT ANY TIME THE BUILDING IS OCCUPIED, WITH LIGHT HAVING AN INTENSITY OF NOT LESS THAN ONE FOOT-CANDLE AT FLOOR LEVEL.
 4. ALL DOORS SHALL HAVE HARDWARE WHICH COMPLIES W/ STATE & NATIONAL ADA REQUIREMENTS.
 5. ALL HARDWARE AND HINGES TO BE BRUSH ALUMINUM.

HARDWARE SET #1 (Entrance doors)
 Double actuating recessed hinges
 Full type handles (5" long x 4" deep)
 2 cylinder 985 x 989 x US26D Falcon Bat.
 1 wall stop 4275 x US26D Drs. 2-3 Baldwin
 1 floor stop 4001 x US26D Drs. 5 Baldwin
 1 12" H. kick plate 1 closer P1208-SBL/SNB

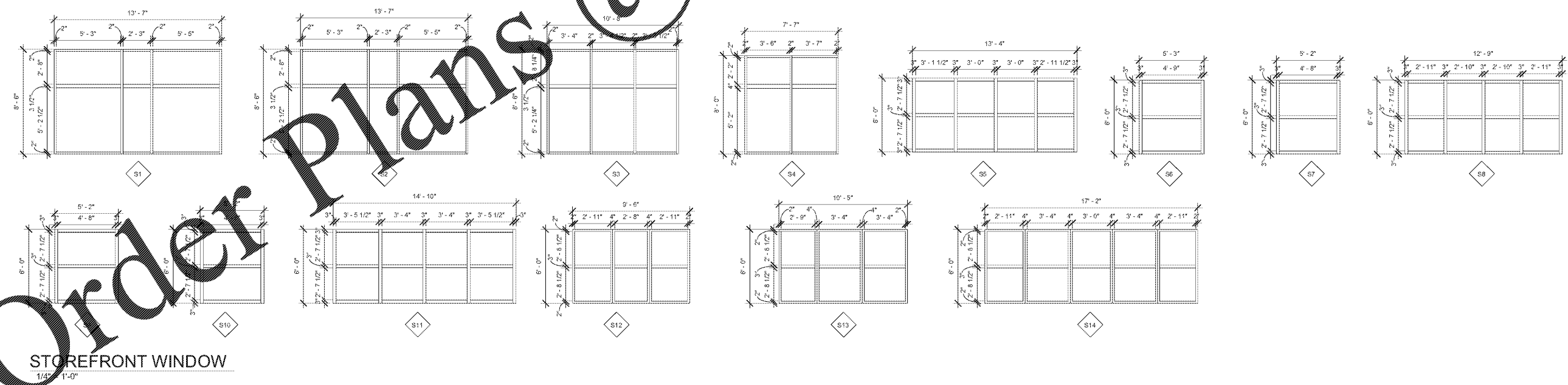
HARDWARE SET #2 (Passage doors)
 Hinges, US26D by Pre-Hung Door Supplier
 1 privacy set S300HG x 2 3/8" BS x US26D Falcon
 1 wall stop 4275 x US26D Drs. 2-3 Baldwin
 1 floor stop 4001 x US26D Drs. 5 Baldwin
 1 12" H. kick plate 1 closer P1208-SBL/SNB

HARDWARE SET #3 (Rear exit doors)
 3 hinges 1279 4 1/2 x 4 1/2 x NFP x US26D Hager
 1 alarm panic, Safeguard 70 x 313 Alarm Lock
 1 rim cylinder 351 x US26D Falcon
 1 limit chain 15F2C Ives
 1 threshold 170A Pemko
 1 door sweep 307AV Pemko
 1 set washerslip 292 DV Pemko
 2 pull handles Pemko
 1 closer P1208-SBL/SNB
 1 12" H. kick plate

HARDWARE SET #4 (Restroom doors)
 Hinges, US26D by Pre-Hung Door Supplier
 1 privacy set S300HG x 2 3/8" BS x US26D Falcon
 1 wall stop 4275 x US26D Drs. 2-3 Baldwin
 1 closer P1208-SBL/SNB
 3 seconds to move from 90° to 30° on the latch)
 1 sign (men/women, with appropriate symbol)
 1 12" H. kick plate



DOOR ELEVATIONS
 1/2" = 1'-0"



Order Plans @

STOREFRONT WINDOW
 1/4" = 1'-0"

CUSTOMER:
GIANT OIL INC
 1806 N. FRANKLIN ST
 TAMPA, FL 33604

SITE ADDRESS:
 BP STATION
 3009 GULF TO BAL BLVD
 CLEARWATER, FL 34615

ENGINEER OF RECORD:
AEC Services, Inc.
 RON FAIR, P.E.
 License No. 9277 QB 9001445
 FL #50738

1618 ALISON WOODS LANE
 TAMPA, FL 33629
 (813) 984-1234
 (813) 984-2660 (F)
 www.aecservicesinc.com

NO.	DESCRIPTION	DATE CHECKED	Author	Checker	Approver
1					
2					
3					
4					
5					
6					

DOOR & STOREFRONT DETAILS

A-7