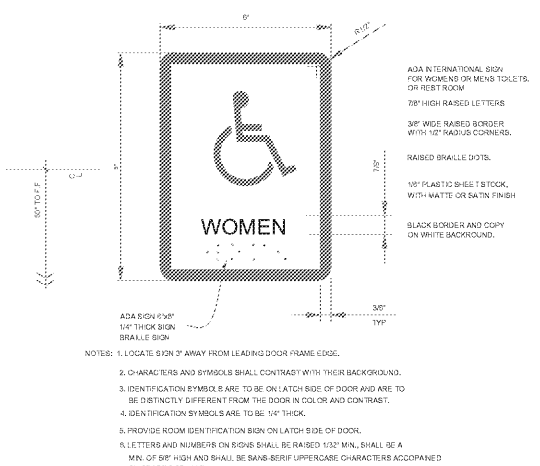
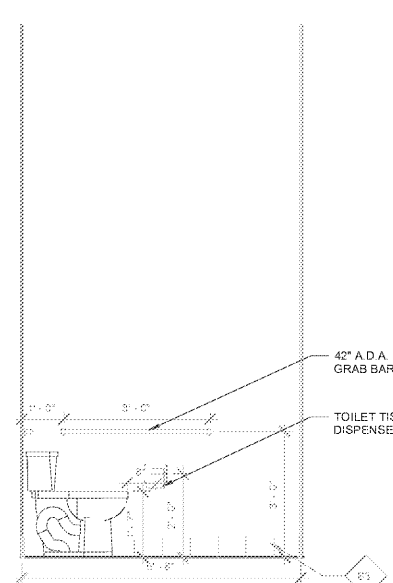


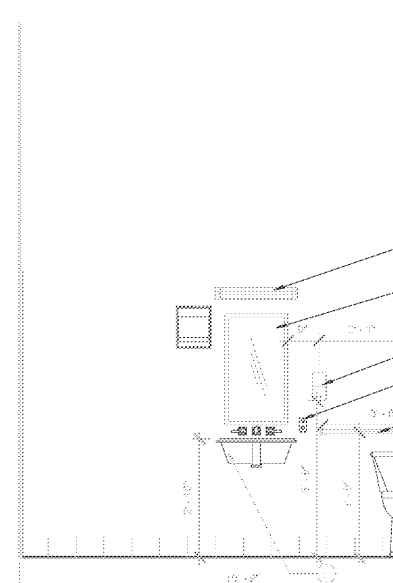
ACCESSIBILITY SIGNAGE DETAIL & NOTES
N.T.S.



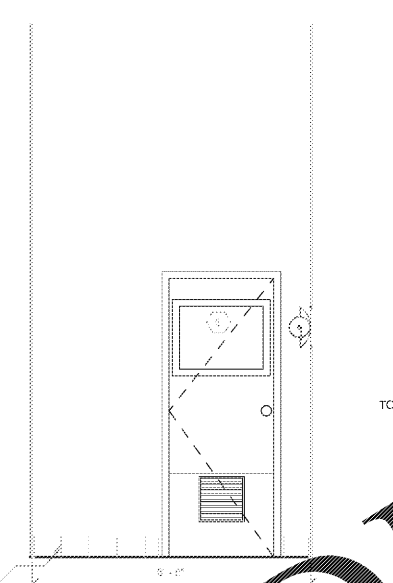
H WOMEN'S ELEVATION
1/2" = 1'-0"



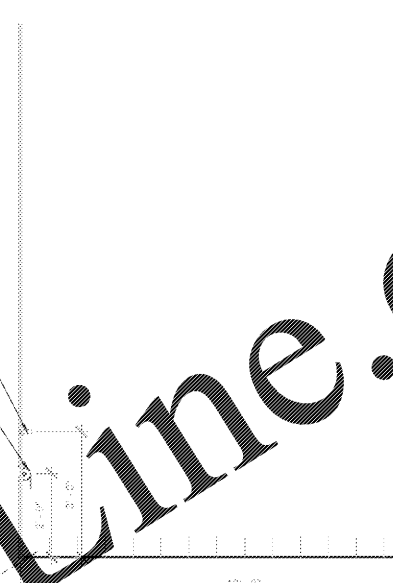
G WOMEN'S ELEVATION
1/2" = 1'-0"



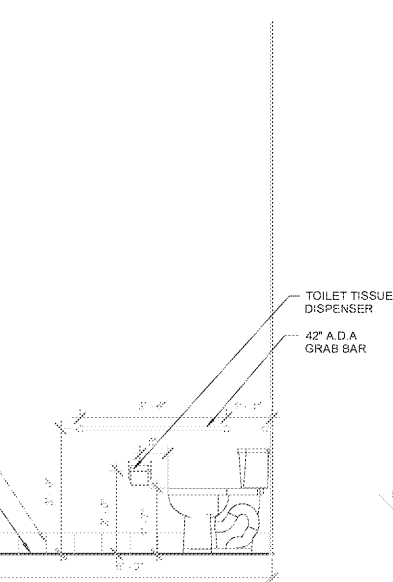
F WOMEN'S ELEVATION
1/2" = 1'-0"



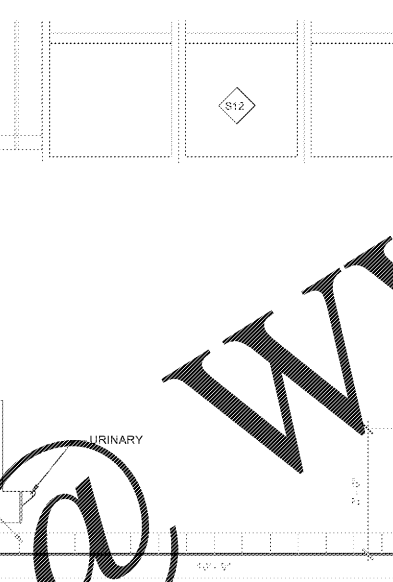
E WOMEN'S ELEVATION
1/2" = 1'-0"



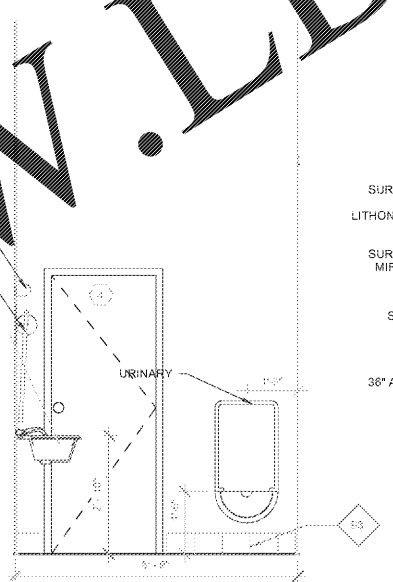
D MEN'S ELEVATION
1/2" = 1'-0"



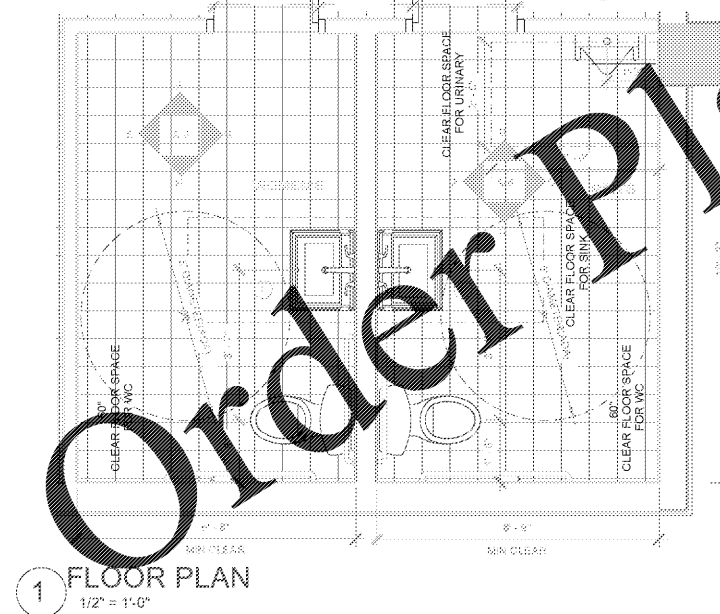
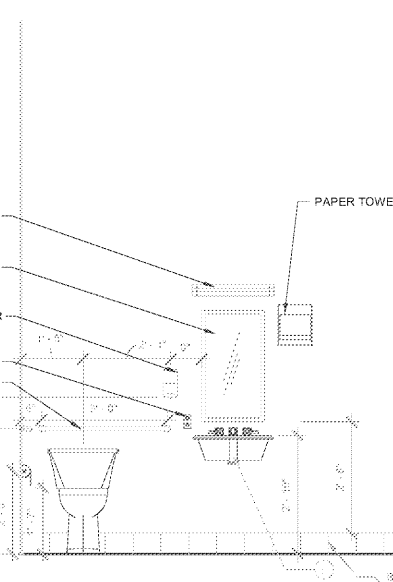
C MEN'S ELEVATION
1/2" = 1'-0"



B MEN'S ELEVATION
1/2" = 1'-0"



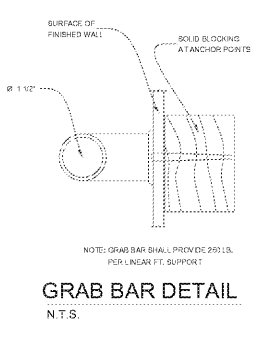
A MEN'S ELEVATION
1/2" = 1'-0"



FLOOR PLAN
1/2" = 1'-0"

- TOILET ACCESSIBILITY NOTES:**
- GRAB BARS SHALL BE LOCATED AT WATER CLOSURE TO BE 1\"/>
 - GLG TO INSTALL ALL REQUIRED BACKING
 - INDICATE ALL EXPOSED PIPES AND DRAINS AT LAVATORIES TO PREVENT CONTACT.
 - ALL ACCESSIBLE WATER CLOSURES TO BE 1\"/>
 - CONTROLS AND MECHANISMS SHALL BE OPERABLE WITH ONE HAND AND SHALL NOT REQUIRE EXHAUSTIVE PINCHING OR TWISTING OF THE WRIST. THE FORCE REQUIRED TO ACTIVATE CONTROLS SHALL BE NO GREATER THAN 5 POUNDS PER FOOT.
 - MIRRORS SHALL BE MOUNTED WITH THE BOTTOM EDGE NO MORE THAN 36\"/>
 - LOCATE HAND DRYER OPERABLE PARTS NOT MORE THAN 47\"/>
 - LOCATE TOILET TISSUE DISPENSERS LOCATED FROM THE BACK WALL 2\"/>
 - GRAB BARS, FASTENERS AND MOUNTING DEVICES SHALL BE DESIGNED FOR 250 LBS/LINAR FT. LOAD.
 - LAVATORIES SHALL BE MOUNTED WITH THE TOP OF COUNTER SURFACE 34\"/>
 - ALL OPERATING MECHANISMS SHALL BE LEVER TYPE.
- NOTES:**
- ALL RESTROOM DOORS WILL HAVE AN 'OCCUPIED' DISPLAY. DEADBOLT (FALCON 307X) WITH P-HAND CAP LEVER, DEADBOLT (FALCON 307X) WITH P-HAND CAP LEVER, SIZE: 2 1/4\"/>
 - TRN EQUIPMENT SUPPLIED AT NO COST.
 - USE TEN PAPER TOWEL DISPENSER AND SOAP DISPENSER AT HAND SINK WITH SALES AREA AS NECESSARY.
 - SEE WALL TILE SCHEDULE FOR TILE SPEC.

RESTROOM	Location / Item	Color	Specification
-Restroom Features	Total	White	1 American Standard Castor 1711 SL 1.875\"/>
	Grab Bar		1 Kimberly Clark UNL632769 - installed by TRN (01-24-18) 1 Kimberly Clark UNL632769 - supplied by TRN (01-24-18) 1 Kimberly Clark UNL632769 - supplied by TRN (01-24-18) 1 Kimberly Clark UNL632769 - supplied by TRN (01-24-18)
	Toilet Tissue Dispenser		1 Kimberly Clark UNL632769 - installed by TRN (01-24-18) 1 Kimberly Clark UNL632769 - supplied by TRN (01-24-18) 1 Kimberly Clark UNL632769 - supplied by TRN (01-24-18) 1 Kimberly Clark UNL632769 - supplied by TRN (01-24-18)
	Paper Towel Dispenser		1 Kimberly Clark UNL632769 - installed by TRN (01-24-18) 1 Kimberly Clark UNL632769 - supplied by TRN (01-24-18) 1 Kimberly Clark UNL632769 - supplied by TRN (01-24-18) 1 Kimberly Clark UNL632769 - supplied by TRN (01-24-18)
	Wash Receptacle - Surface Mount		1 American Standard 1711 SL 1.875\"/>
	Mirror		1 American Standard 1711 SL 1.875\"/>
	Soap Dispenser		1 Kimberly Clark UNL632769 - installed by TRN (01-24-18) 1 Kimberly Clark UNL632769 - supplied by TRN (01-24-18) 1 Kimberly Clark UNL632769 - supplied by TRN (01-24-18) 1 Kimberly Clark UNL632769 - supplied by TRN (01-24-18)
	Electric Hand Dryer		1 Kimberly Clark UNL632769 - installed by TRN (01-24-18) 1 Kimberly Clark UNL632769 - supplied by TRN (01-24-18) 1 Kimberly Clark UNL632769 - supplied by TRN (01-24-18) 1 Kimberly Clark UNL632769 - supplied by TRN (01-24-18)
	Zero-Change Station (Mount at 36\"/>		
	Backflow Preventer		1 American Standard 1711 SL 1.875\"/>
	Anti-siphon Vacuum Breaker		1 American Standard 1711 SL 1.875\"/>
	HOT & Cold Hook (Mount on wall)		1 American Standard 1711 SL 1.875\"/>
AIR FRESHENER DISPENSER	KIMBERLY CLARK	VNA 153860	TRN INC. BARRY HEALY 1-800-246-0776
LAVATORY	AMERICAN STANDARD	1021.075	1 American Standard Castor 1711 SL 1.875\"/>
WATER CLOSET	AMERICAN STANDARD	3043.102	1 American Standard Castor 1711 SL 1.875\"/>
WATER CLOSET	QENBER	21-317	1 American Standard Castor 1711 SL 1.875\"/>
WATER CLOSET	QUANTUM	158-100	1 American Standard Castor 1711 SL 1.875\"/>
FLOW CENTER, ELEC.	SEMEX	EN66	1 American Standard Castor 1711 SL 1.875\"/>
INSTANT WATER HEATER	LITHONA	WC117A1207P	1 American Standard Castor 1711 SL 1.875\"/>
SURFACE MOUNTED LIGHT FIXTURE	PLUMBEREX	2959	1 American Standard Castor 1711 SL 1.875\"/>
PPIC SHROUD	Restroom door		1 American Standard Castor 1711 SL 1.875\"/>
'Occupied' Display Deadbolt	Restroom door		1 American Standard Castor 1711 SL 1.875\"/>
'CLASSROOM LOCK'	Restroom door		1 American Standard Castor 1711 SL 1.875\"/>



GRAB BAR DETAIL
N.T.S.

CUSTOMER:
GIANT OIL INC
1806 N. FRANKLIN ST
TAMPA, FL 33602

SITE ADDRESS:
BP STATION
3009 GULF TO BAY RD
CLEARWATER, FL 34619

ENGINEER OF RECORD:
AEC Services, Inc.
RON FAIR, P.E. GE #0011445
FL # 58738 License No. 9277
1616 ALLISON WOODS LANE
TAMPA, FL 33619
(813)884-1254
(813)884-2680 (f)
www.aecservicesinc.com

NO	DESCRIPTION	DATE	CHECKED	APPROVED
6				
5				
4				
3				
2				
1				
NO				

A.D.A. RESTROOMS & ELEVATIONS

A-6