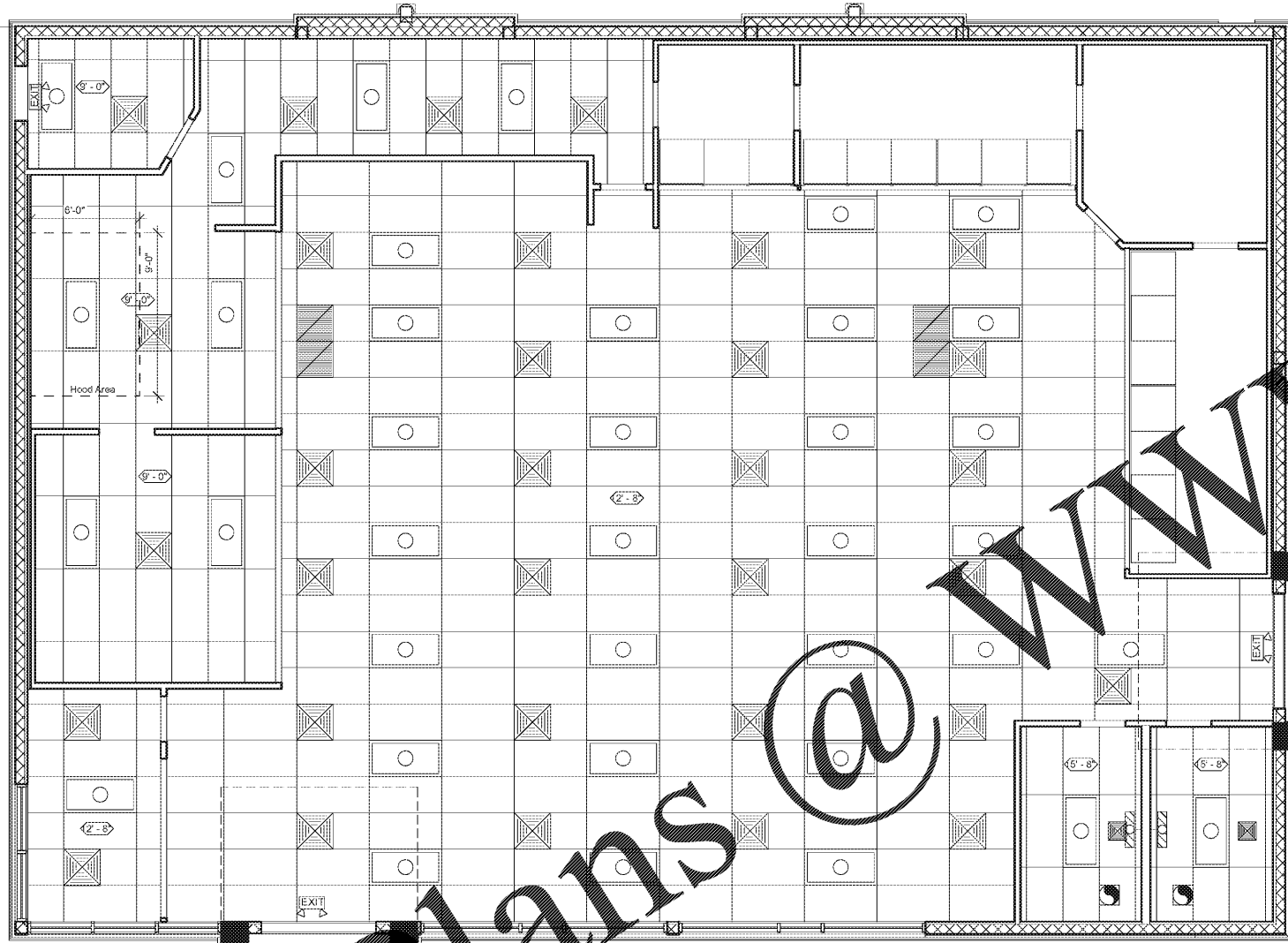
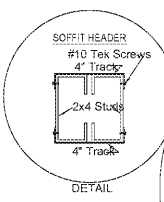


Order Plans @ [www.lidilinc.com](http://www.lidilinc.com)



**REFLECTED CEILING PLAN**  
1/4" = 1'-0"

NOTE:  
REFERENCE ELECTRICAL PLANS FOR  
LIGHTING LOCATIONS.



**SOFFIT HEADER DETAIL**  
#10 Tek Screws  
4" Track  
2x4 Studs

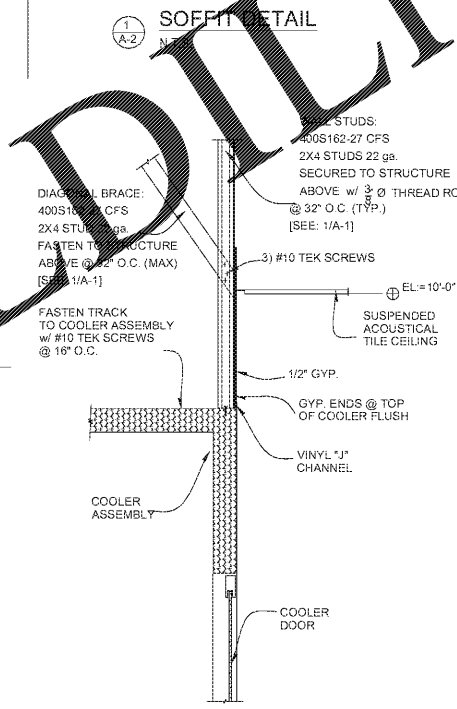
DIAGONAL BRACE:  
400S162-27 CFS  
2X4 STUD 22 ga.  
FASTEN TO STRUCTURE  
ABOVE @ 32" O.C. (MAX)  
[SEE: 1/A-1]

WALL STUDS:  
400S162-27 CFS  
2X4 STUDS 22 ga.  
SECURED TO STRUCTURE  
ABOVE w/ 3/8" Ø THREAD ROD  
@ 32" O.C. (TYP.)  
[SEE: 1/A-1]

3) #10 TEK SCREWS

1/2" GYP.

SOFFIT HEADER:  
2) 400S162-54  
CFS 2X4 STUDS 16ga.  
2) 400T162-52  
CFS 4" TRACK 16ga.  
FASTEN w/ #10 TEK SCREWS  
@ 16" O.C. (Full Length of Head)  
[See Detail]



**SOFFIT DETAIL**  
N.T.S.

DIAGONAL BRACE:  
400S162-27 CFS  
2X4 STUD 22 ga.  
FASTEN TO STRUCTURE  
ABOVE @ 32" O.C. (MAX)  
[SEE: 1/A-1]

FASTEN TRACK  
TO COOLER ASSEMBLY  
w/ #10 TEK SCREWS  
@ 16" O.C.

3) #10 TEK SCREWS

1/2" GYP.

GYP. ENDS @ TOP  
OF COOLER FLUSH

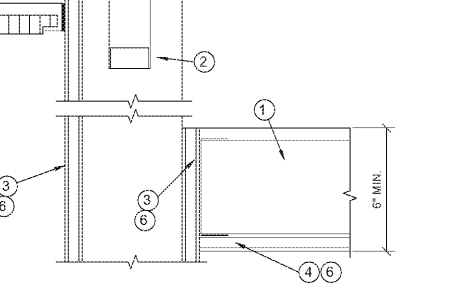
VINYL "J"  
CHANNEL

COOLER ASSEMBLY

COOLER DOOR

SUSPENDED  
ACOUSTICAL  
TILE CEILING

EL=10'-0"



**BULKHEAD DETAIL**  
N.T.S.

1. METAL STUDS @ 16" O.C.  
2. 1 1/2" CHANNEL BRACE AT 48" O.C.  
3. 5/8" TYPE X DRYWALL  
4. 5/8" DRYWALL CEILING  
5. LAY-IN ACOUSTICAL PANELS  
IN SUSPENDED TEE GRID  
6. SEE ROOM FINISH SCHEDULE  
FOR FINISH.  
7. TRACK ATTACHED TO STRUCTURE  
[SEE: 1/A-1]



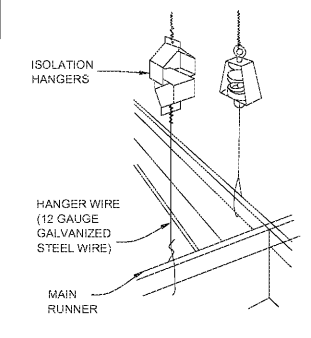
**CEILING DETAIL**  
N.T.S.

\*NOTES:  
METAL SUSPENSION SYSTEMS FOR  
ACOUSTICAL TILE AND FOR LAY-IN PANEL  
CEILING SHALL BE INSTALLED IN  
ACCORDANCE WITH 2014 FBC w/2007 Amdment  
HANGERS FOR SUSPENDED CEILING SHALL  
BE FASTENED TO OR EMBEDDED IN THE  
STRUCTURAL FRAMING MASONRY OR  
CONCRETE.  
HANGERS SHALL BE SADDLE TIED AROUND  
MAIN RUNNERS TO DEVELOP THE FULL  
STRENGTH OF THE HANGERS LOWER ENDS  
SPICES AND INTERSECTIONS OF RUNNERS  
SHALL BE ATTACHED WITH MECHANICAL  
INTERLOCKING CONNECTORS SUCH AS POP  
RIVET, SCREWS, PINS, PLATES, WIBENY TABS,  
OR OTHER APPROVED CONNECTORS.  
DESIGN CONNECTORS FOR 2 TIMES DESIGN  
LOAD OR ULTIMATE AXIAL TENSION OR  
COMPRESSION (MIN 60LBS.) OF  
CROSS-SECTION SHALL BE SECURED  
ATTACHED TO MAIN RUNNER BY  
SADDLE TYPING WITH NOT  
LESS THAN ONE STRAND OF #16 OR TWO  
STRANDS OF NO. 18 LBS. GALV. TIE WIRE OR  
APPROPRIATE EQUIVALENT ATTACHMENTS.

**LEGEND:**

NOTE:  
All Fluorescent light fixtures are 3) tube / 32W  
unless noted otherwise

- 2x4 LAY-IN LIGHT FIXTURE
- EXTERIOR LIGHT FIXTURE
- CEILING EXHAUST FAN
- BATTERY PACK EMERGENCY LIGHT
- EXIT LIGHT
- 12"x12" HVAC SUPPLY AIR DIFFUSER
- 24"x24" HVAC SUPPLY AIR DIFFUSER
- 2'x2' HVAC RETURN AIR DIFFUSER
- CEILING HEIGHT
- METAL CEILING GRID WITH ACOUSTICAL CEILING TILE



**SUSPENDED CEILING DETAIL**  
N.T.S.

ISOLATION HANGERS

HANGER WIRE (12 GAUGE GALVANIZED STEEL WIRE)

MAIN RUNNER

CUSTOMER: **GIANT OILINGS**  
1806 N. FRANKLIN ST.  
TAMPA, FL 33602

SITE ADDRESS: **BP STATION**  
3009 GULF TO BAY BLVD.  
CLEARWATER, FL 34619

ENGINEER OF RECORD:  
**AEC Services, Inc.**  
RON FAIR, P.E.  
FL # 51738 License No. 9277 CB #011445

1816 ALLISON WOODS LANE  
TAMPA, FL 33619  
(813)684-1234  
(813)684-0660 (f)  
www.aecservicesinc.com

NO.	DESCRIPTION	DATE	CHECKED	CHECKER	APPROVAL	APPROVER
6						
5						
4						
3						
2						
1						

JOB NO.	DWG Name	XREF Name	SCALE	DATE	DRAWN BY:	CHECKED:	APPROVAL:
GO161712				09/13/18	Author	Checker	Approver

**REFLECTED CEILING PLAN**

**A-2**

RON FAIR, P.E.  
FL #50738