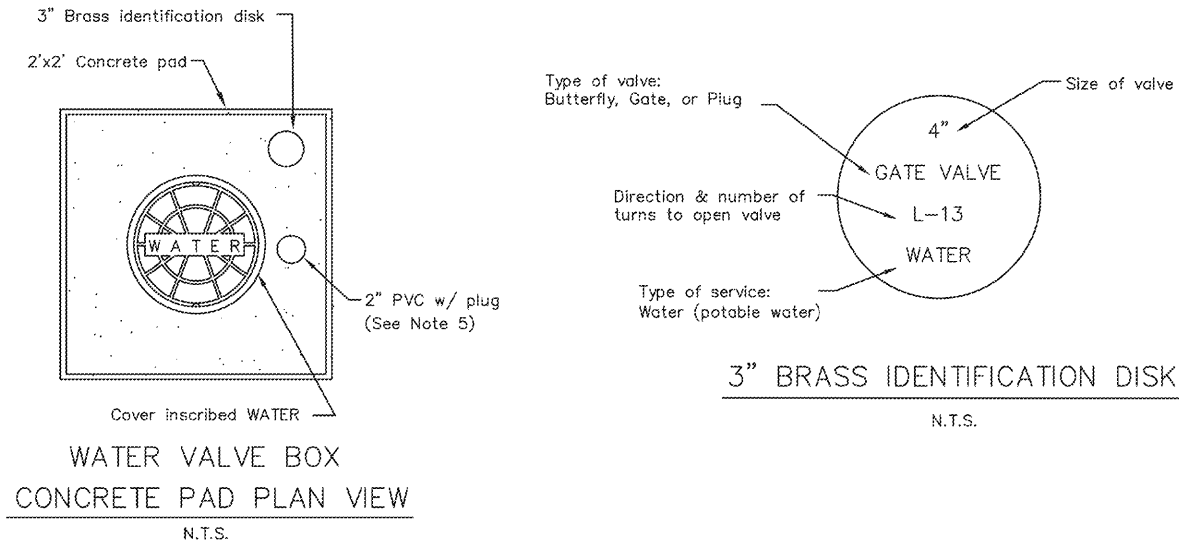


NOTES:

1. Extension on valve box shall be set so as to reserve 1/2 of the adjustment length for future use.
2. Operating nut shall be set so as to be within 12" to 18" of grade.
3. Install 3" brass identification disk in concrete.
4. Install 2" pvc with plug for tracer wire storage.
5. Locator wire access - 2" (white or gray) schedule 80 PVC, brass female adaptor coupling and 2" brass plug w/ recess nut. terminate insulated, solid 12 gauge copper tracer wire at top w/ a minimum 12" of extra wire.



DATE	REVISION DESCRIPTION	APP

CITY OF CLEARWATER ENGINEERING DEPARTMENT WATER DETAILS
--

WATER VALVE BOX CONCRETE PAD PLAN VIEW
--

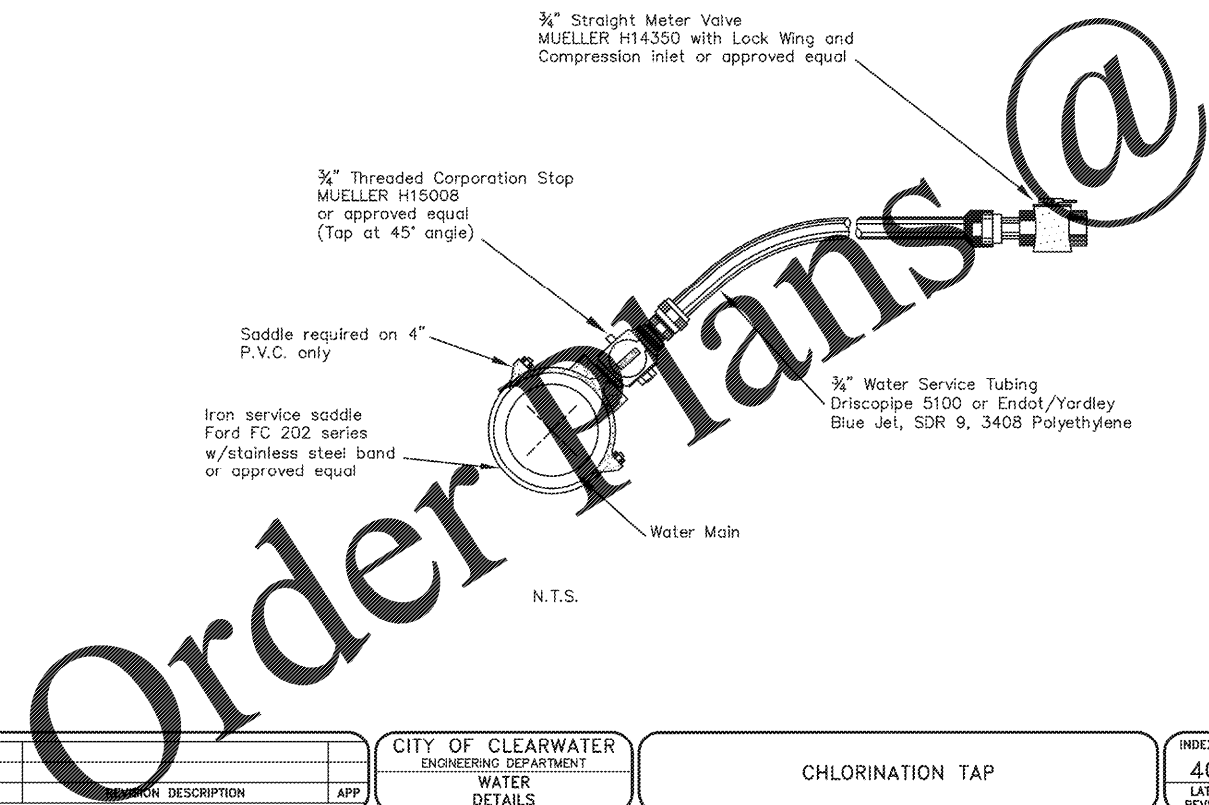
INDEX NO. 402	PAGE NO. 2 OF 4
LATEST REVISION	2/22/2016

DATE	REVISION DESCRIPTION	APP

CITY OF CLEARWATER ENGINEERING DEPARTMENT WATER DETAILS
--

TYPICAL METER SETS W/ BACKFLOW PREVENTERS 1-1/2" & 2" MODELS
--

INDEX NO. 405	PAGE NO. 2 OF 5
LATEST REVISION	2/22/2016



DATE	REVISION DESCRIPTION	APP

CITY OF CLEARWATER ENGINEERING DEPARTMENT WATER DETAILS
--

CHLORINATION TAP

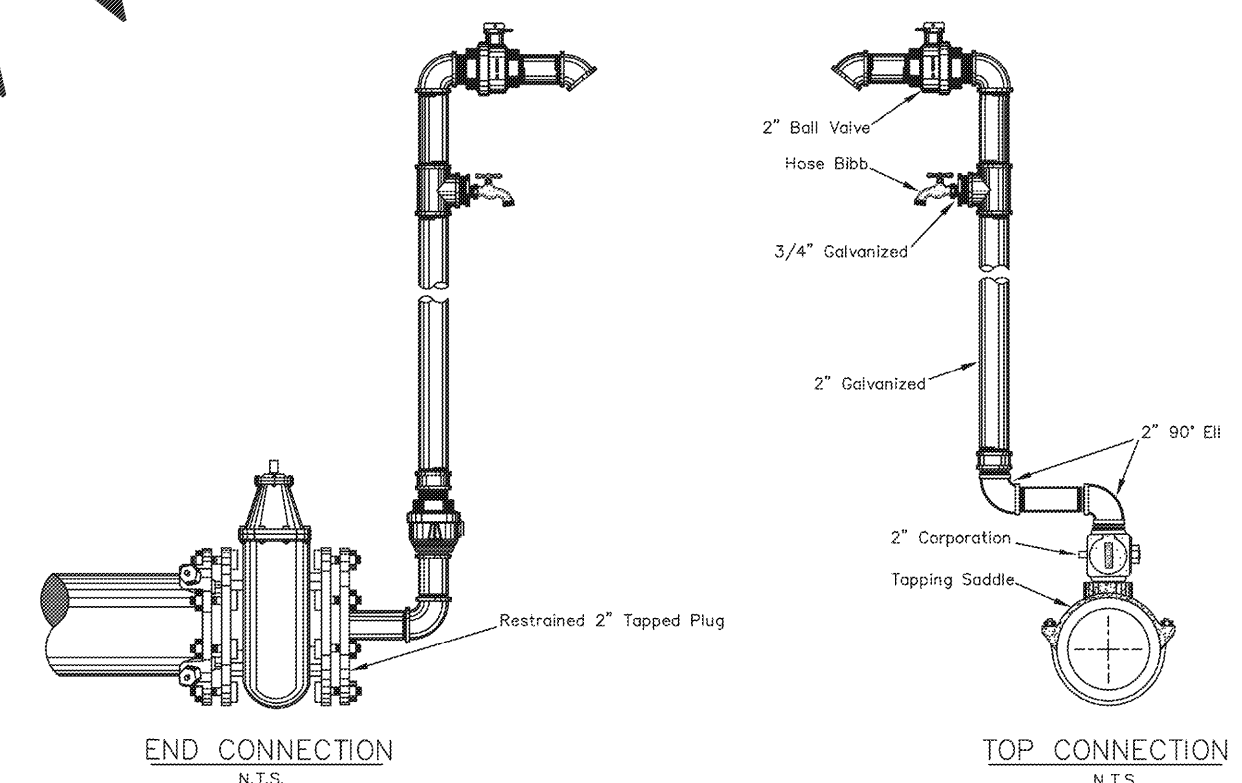
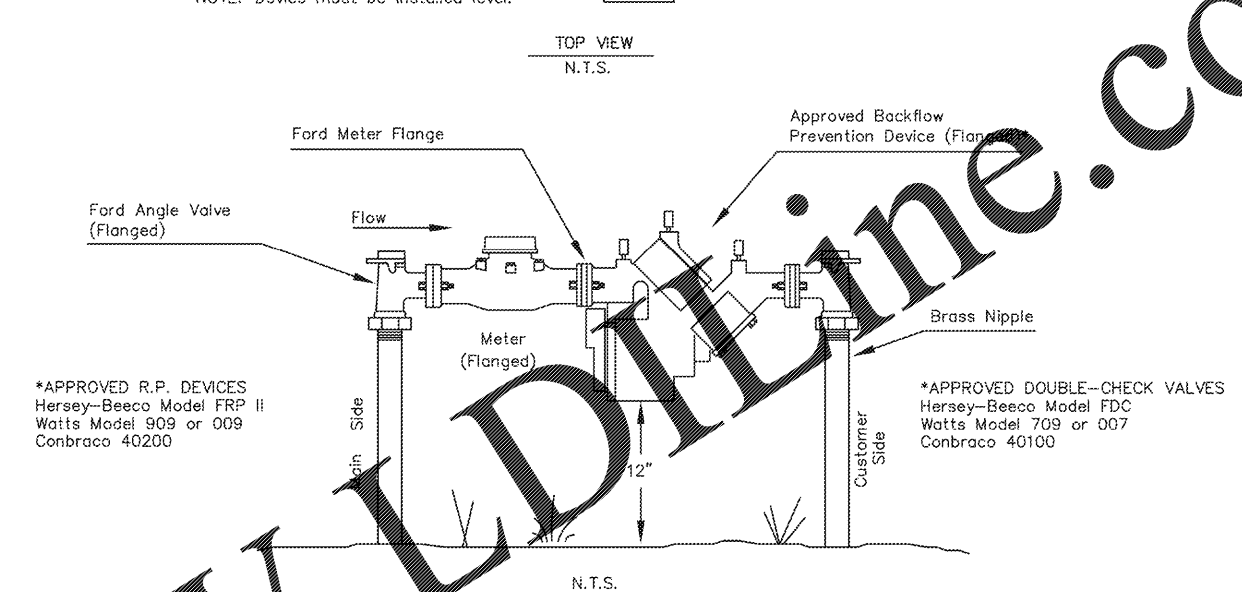
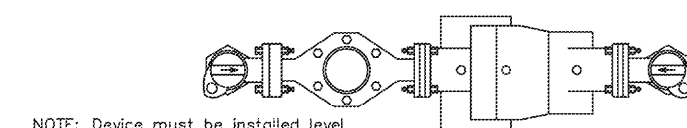
INDEX NO. 408	PAGE NO. 1 OF 2
LATEST REVISION	2/22/2016

DATE	REVISION DESCRIPTION	APP

CITY OF CLEARWATER ENGINEERING DEPARTMENT WATER DETAILS
--

TEMPORARY BLOWOFF AND SAMPLE TAP

INDEX NO. 408	PAGE NO. 2 OF 2
LATEST REVISION	2/22/2016



DATE	REVISION DESCRIPTION	APP

CITY OF CLEARWATER ENGINEERING DEPARTMENT WATER DETAILS
--

TEMPORARY BLOWOFF AND SAMPLE TAP

INDEX NO. 408	PAGE NO. 2 OF 2
LATEST REVISION	2/22/2016

CUSTOMER
GIANT OIL INC
1806 N. FRANKLIN STREET
TAMPA, FLORIDA 33602

SITE ADDRESS
BP STATION
3009 GULF TO BAY BLVD.
CLEARWATER, FLORIDA 34619

ENGINEER OF RECORD
AEC Services, Inc.
RON FAIR, P.E.
FL # 50738 License No. 9277 QB #001445

1619 ALLISON WOODS LANE
TAMPA, FL 33619
(813) 984-1234
www.aecservicesinc.com

NO	DESCRIPTION	DATE	CHECKED	APP	REVISIONS

JOB NO. 0016172	DWG Name CIVIL	XREF Name NONE	SCALE N.T.S.	DATE 2/15/17	DRAWN BY PAZ	CHECKED	APP
-----------------	----------------	----------------	--------------	--------------	--------------	---------	-----

UTILITY
DETAILS

C-5.2

THIS DRAWING IS THE PROPERTY OF AEC SERVICES, INC. AND HAS BEEN PREPARED SPECIFICALLY FOR THE OWNER OF THIS PROJECT AT THIS SITE. IT MAY NOT BE USED FOR ANY OTHER PURPOSE, LOCATION, OR OWNER.