

N.T.S.

NOTE:
All pavement markings to be thermoplastic.

DATE	REVISION DESCRIPTION	APP
5/18/15	ADDED NOTE	S.R.
2/15/12	CHANGE DETAIL NAME	H.P.

CITY OF CLEARWATER
ENGINEERING DEPARTMENT
STREET SECTIONS
AND DETAILS

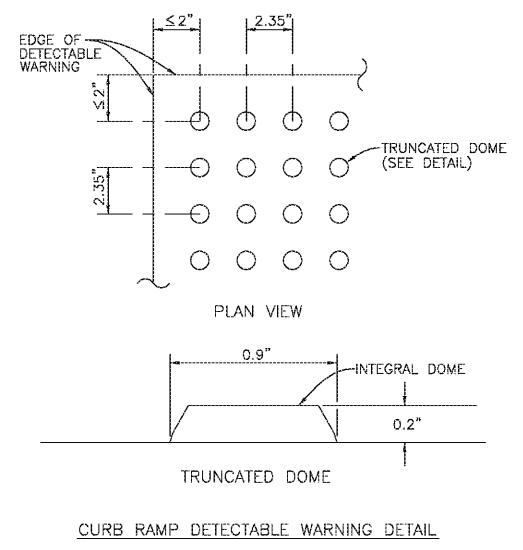
ACCESSIBLE PARKING STALL - SINGLE

INDEX NO.	PAGE NO.
118	1 OF 2
LATEST REVISION	2/22/2016

ANATE COUNTY
TRANSPORTATION DEPARTMENT

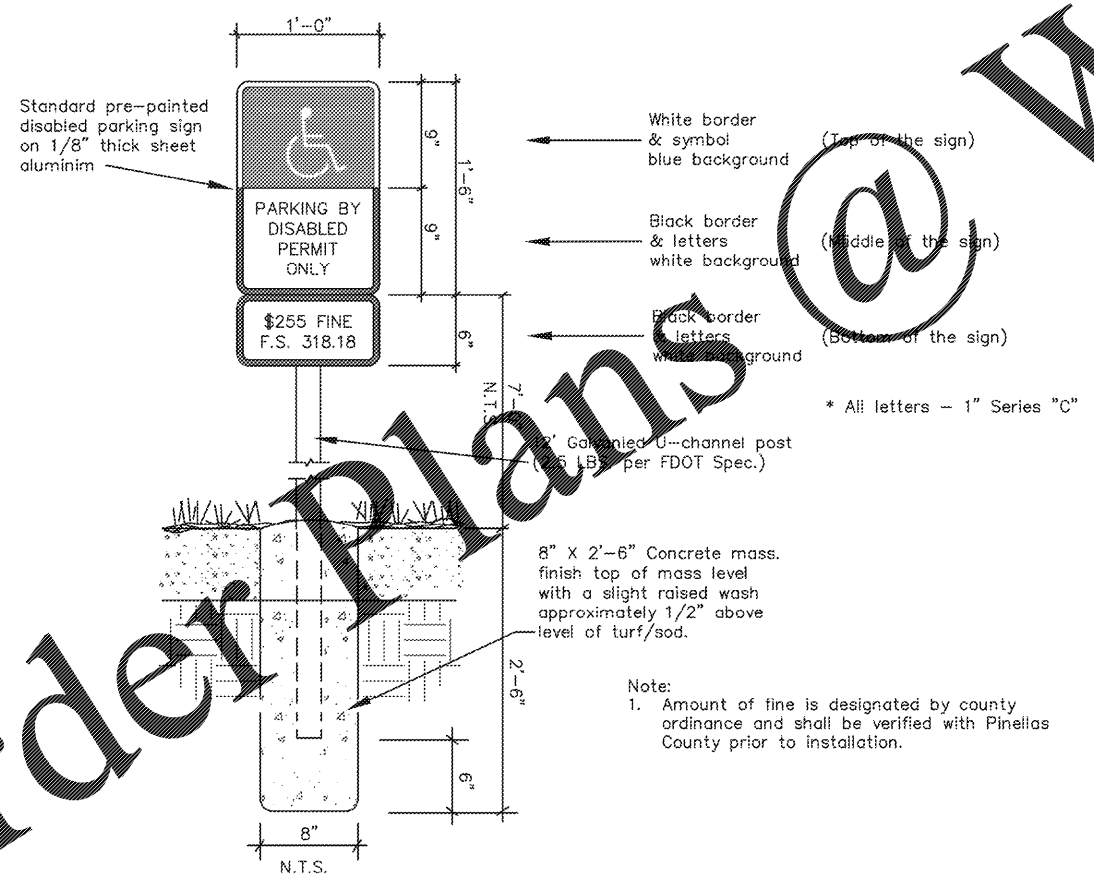
CURB RAMP
DETECTABLE
WARNINGS

302.3



CURB RAMP DETECTABLE WARNING DETAIL

NOTES:
DETECTABLE WARNINGS ON WALKING SURFACES
THE DETECTABLE WARNING SHALL EXTEND THE FULL WIDTH AND DEPTH OF THE CURB RAMP.
DETECTABLE WARNINGS SHALL CONSIST OF RAISED TRUNCATED DOMES WITH A DIAMETER OF NOMINAL 0.9 INCH, A HEIGHT OF NOMINAL 0.2 INCH AND A CENTER-TO-CENTER SPACING OF NOMINAL 2.35 INCH AND SHALL CONTRAST VISUALLY WITH ADJOINING SURFACES EITHER LIGHT-ON-DARK, OR DARK-ON-LIGHT.
THE MATERIAL USED TO PROVIDE CONTRAST SHALL BE AN INTEGRAL PART OF THE WALKING SURFACE. DETECTABLE WARNINGS USED ON INTERIOR SURFACES SHALL DIFFER FROM ADJOINING WALKING SURFACES IN RESISTENCY OR SOUND-OR-VIBRATION CONTACT.
THE MATERIAL USED TO PROVIDE CONTRAST SHOULD CONTRAST BY AT LEAST 30%. CONTRAST IN PERCENT IS DETERMINED BY:
 $CONTRAST = [(B1 - B2) / B1] \times 100$
WHERE B1 = LIGHT REFLECTANCE VALUE (LRV) OF THE LIGHTER AREA AND B2 = LIGHT REFLECTANCE VALUE (LRV) OF THE DARKER AREA.
NOTE THAT IN ALL APPLICATIONS BROWN, WHITE AND BLACK ARE NEVER ABSOLUTE; THUS, B1 NEVER EQUALS 0 AND B2 IS ALWAYS GREATER THAN 0.
ALSO NOTE TRUNCATED DOMES TO BE IN COLOR.



N.T.S.

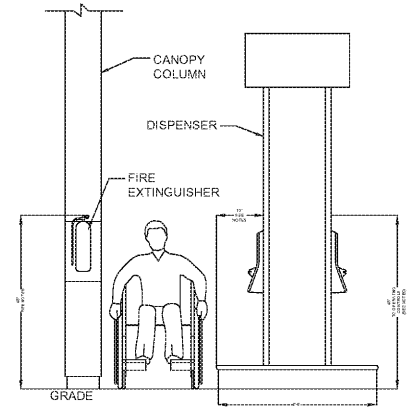
Note:
1. Amount of fine is designated by county ordinance and shall be verified with Pinellas County prior to installation.

DATE	REVISION DESCRIPTION	APP
2/15/12	CHANGE DETAIL TITLE	H.P.
10/09	CHG. SIGN POST TYPE	H.P.

CITY OF CLEARWATER
ENGINEERING DEPARTMENT
STREET SECTIONS
AND DETAILS

TYPICAL ACCESSIBLE
PARKING SIGN

INDEX NO.	PAGE NO.
119	1 OF 1
LATEST REVISION	2/22/2016



HC ACCESSIBLE SERVICE NOTES:

- 1) REACH RANGE IS TO BE BETWEEN 9" MINIMUM FROM GROUND TO 48" MAXIMUM FRONT APPROACH OR 54" MAXIMUM SIDE APPROACH.
- 2) REACH RANGE SHOULD NOT EXCEED 10" MAXIMUM IN DEPTH FOR ANY SERVICE SO THAT BOTH SIDE AND FRONT REACH REQUIREMENTS CAN BE MAINTAINED AS STATED ABOVE.
- 3) A 30"x48" CLEAR FLOOR SPACE IS REQUIRED IN FRONT OF EACH ACCESSIBLE SERVICE AT A SITE. A 2% MAX. FOR BOTH CROSS SLOPE AND RUNNING SLOPE IS PREFERRED, BUT IF SITE CONDITIONS PROHIBIT THE PREFERRED GRADING, THEN A MAX. 2% CROSS SLOPE AND MAX. 5% RUNNING SLOPE IS ACCEPTABLE.
- 4) OBJECTS HIGHER THAN 27" FROM WALKING SURFACE CAN NOT PROTRUDE MORE THAN 4" INTO ACCESSIBLE ROUTE AND SHALL NOT REDUCE THE CLEAR WIDTH OF THE ROUTE OR MANEUVERING SPACE

THIS DRAWING IS THE PROPERTY OF AEC SERVICES, INC. AND HAS BEEN PREPARED SPECIFICALLY FOR THE OWNER OF THIS PROJECT AT THIS SITE. IT MAY NOT BE USED FOR ANY OTHER PURPOSE, LOCATION, OR OWNER.

Order Plans @ WWW.AECServices.com

CUSTOMER:
GIANT OIL INC
1806 N. FRANKLIN STREET
TAMPA, FLORIDA 33602

SITE ADDRESS:
BP STATION
3009 GULF TO BAY BLVD.
CLEARWATER, FLORIDA 34619

ENGINEER OF RECORD:
AEC Services, Inc.
RON FAIR, P.E.
License No. 9277 OB #0011445
FL # 50738

1619 ALLISON WOODS LANE
TAMPA, FL 33619
(813) 984-1234
(813) 984-2680 (f)
www.aecservicesinc.com

JOB NO.	DWG Name	XREF Name	SCALE	DATE	DRAWN BY	CHECKED	APPROVAL
6016172	SITE PLAN	MASTER	AS NOTED	2/15/17	E.T.N.	REP	RAF

NO.	DESCRIPTION	DATE	APPROVAL
NO	REVISIONS		

ADA
SITE PLAN
DETAILS

C-3.4