

| NO | REVISION / SUBMISSIONS | DATE |
|----|------------------------|------|
| | | |
| | | |
| | | |

JOHN A. TUTEN & ASSOCIATES
 ARCHITECTS
 4680 U.S. HIGHWAY 17 NORTH
 BRUNSWICK, GEORGIA 31525
 www.jatuten.com

GLYNN ACADEMY HIGH SCHOOL
 SCIENCE BLDG. (5015) MODERNIZATION
 1001 MANSFIELD ST. BRUNSWICK GA, 31520
 GLYNN COUNTY BOARD OF EDUCATION

CAPITAL OUTLAY
 PROJECT # TBD
 SYSTEM CODE: 663
 SCHOOL CODE: 4752
 FTE: 1793

ELECTRICAL DETAILS

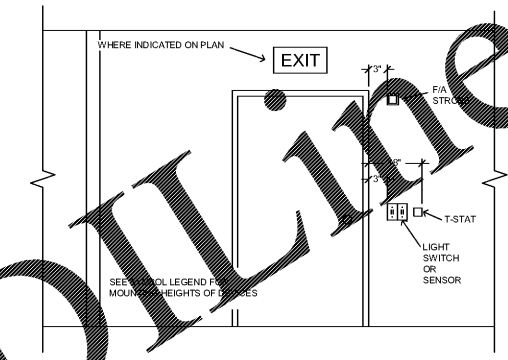


ISSUED FOR:
 BID SET

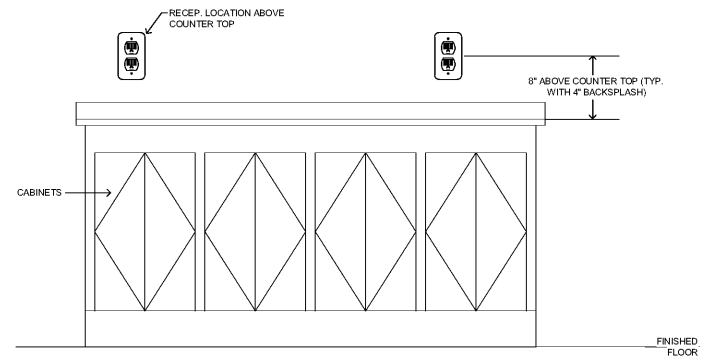
J.V. MP
 DRAWN BY
 DPCE
 CHECKED BY
 D.J.P.
 APPROVED BY
 01/19/19
 PROJECT DATE
 1802
 PROJECT NUMBER

SHEET NUMBER:
E5.02

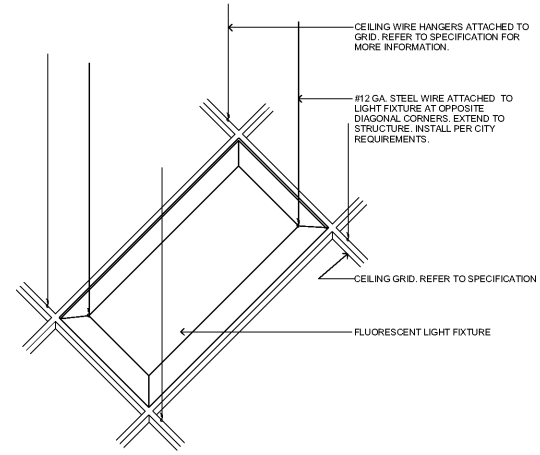
Copyright (c) 2019
 All Rights Reserved.



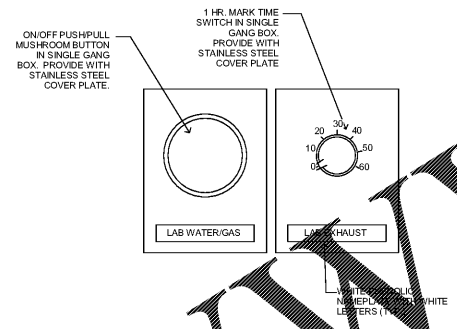
3 TYPICAL CLASSROOM ROUGH-IN DETAIL
 SCALE: N.T.S.



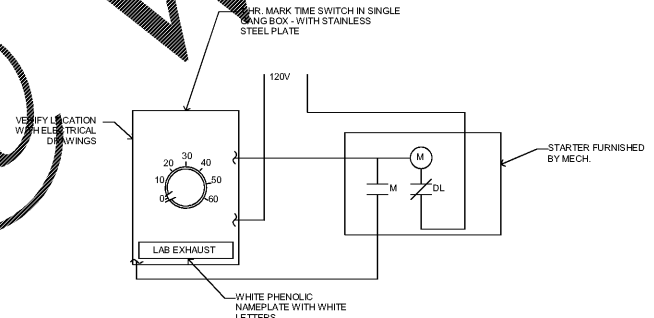
2 WIRING DEVICE MOUNTING HEIGHT
 SCALE: N.T.S.



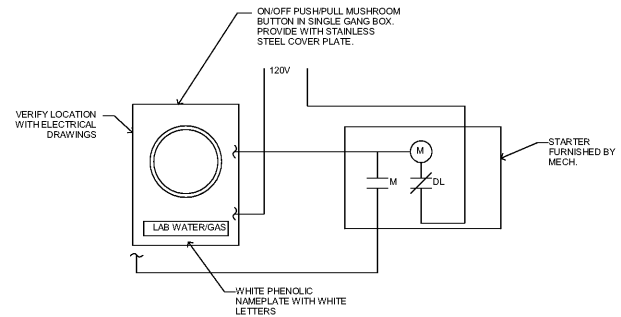
1 LIGHT FIXTURE SUPPORT DETAIL
 SCALE: N.T.S.



6 SCIENCE LAB CONTROL DETAIL
 SCALE: N.T.S.



5 SCIENCE LAB EMERGENCY EXHAUST SCHEMATIC (TYP.)
 SCALE: N.T.S.



4 SCIENCE LAB EMERGENCY GAS/WATER SCHEMATIC (TYP.)
 SCALE: N.T.S.

Order Plans

@ WWW.LDLINE.COM