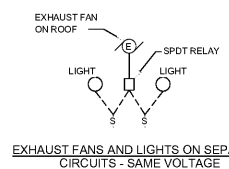
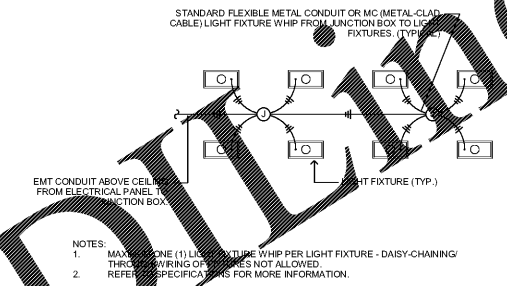


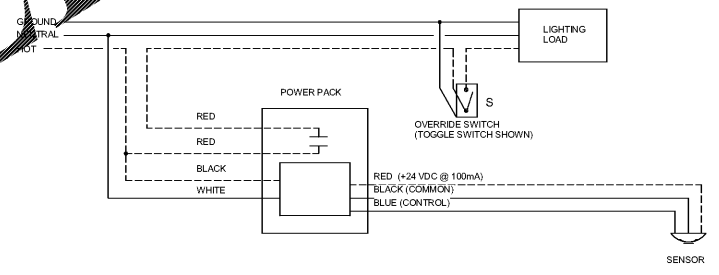
NO	REVISION / SUBMISSIONS	DATE



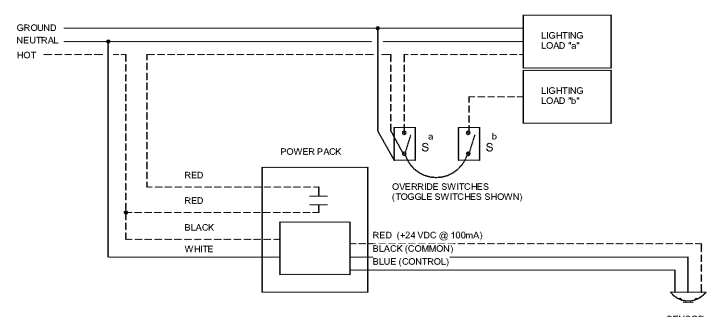
**3 EXHAUST FAN & LIGHT INTERLOCK DETAIL**  
SCALE: N.T.S.



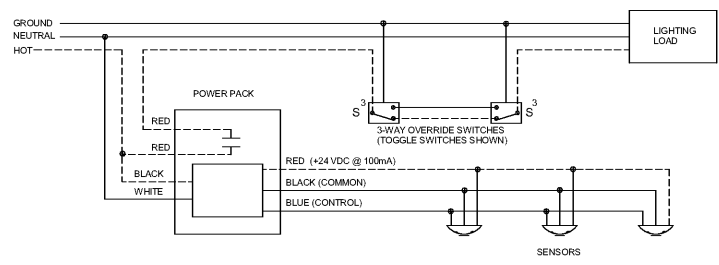
**2 LIGHT FIXTURE ELECTRICAL WIRING INSTALLATION DETAIL**  
SCALE: N.T.S.



**SINGLE LOAD OCCUPANCY SENSOR**

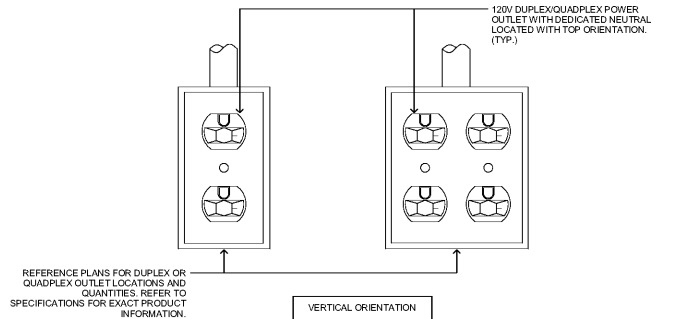
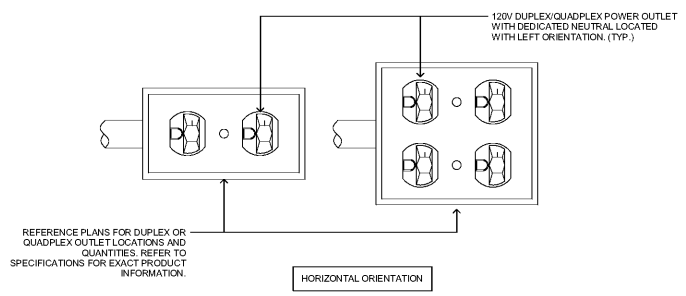


**DUAL LOAD DUAL SWITCHED OCCUPANCY SENSOR**

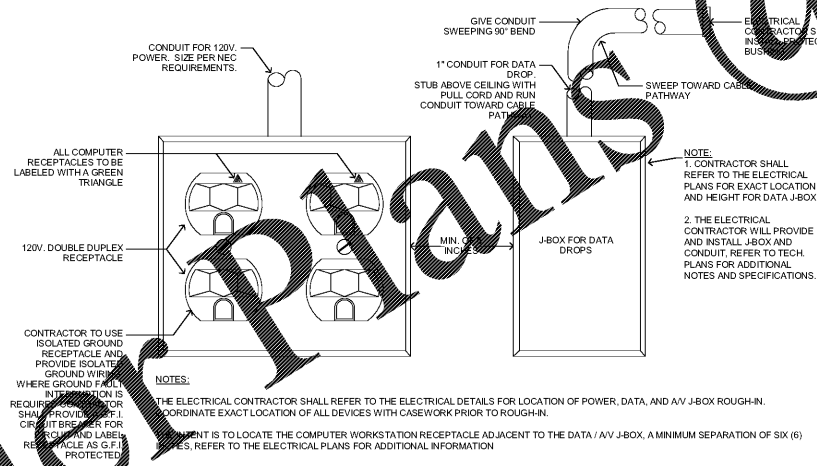


**MULTIPLE SENSORS / 3-WAY OVERRIDE**

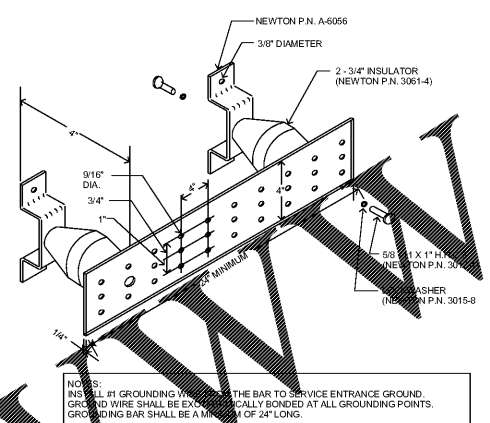
**1 SENSOR WIRING DIAGRAMS**  
SCALE: N.T.S.



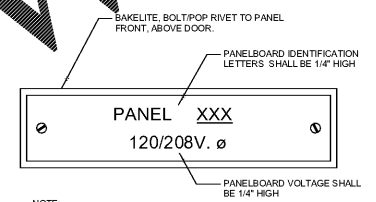
**8 TYPICAL RECEPTACLE ORIENTATION DETAIL**  
SCALE: N.T.S.



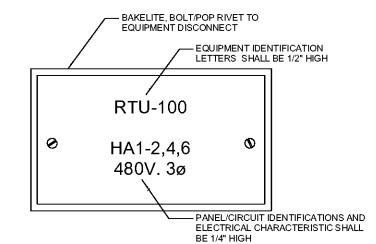
**7 TYPICAL COMPUTER WORKSTATIONS**  
SCALE: N.T.S.



**6 GROUND BUS BAR DETAIL**  
SCALE: N.T.S.



**5 PANELBOARD NAMEPLATE**  
SCALE: N.T.S.



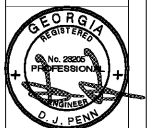
**4 EQUIPMENT DISCONNECT NAMEPLATE**  
SCALE: N.T.S.

JOHN A. TUTTEN & ASSOCIATES  
ARCHITECTS  
4680 U.S. HIGHWAY 17 NORTH  
BRUNSWICK, GEORGIA 31525  
www.planters.com

GLYNN ACADEMY HIGH SCHOOL  
SCIENCE BLDG. (5015) MODERNIZATION  
1001 MANSFIELD ST. BRUNSWICK GA, 31520  
GLYNN COUNTY BOARD OF EDUCATION

CAPITAL OUTLAY  
PROJECT # TBD  
SYSTEM CODE: 663  
SCHOOL CODE: 4752  
FTE: 1793

ELECTRICAL DETAILS



ISSUED FOR:  
BID SET

J.V. MP  
DRAWN BY  
DPCE  
CHECKED BY  
DJP  
APPROVED BY  
01/19/19  
PROJECT DATE  
1802  
PROJECT NUMBER

SHEET NUMBER:  
**E5.01**

Copyright (c) 2019  
All Rights Reserved.

dpce DON PENN CONSULTING ENGINEER  
1301 BRANNA BLVD.  
SUITE 110  
WEBLAKES, TX 75082  
P 972.412.2668 F 972.251.8411

1/15/2019 4:15:55 PM C:\Users\jvalde\Documents\17-2015\_GA\_SCIENCE BUILDING MEPV2016\_includes\IED.mxd

Order Plans @