

NO	REVISION / SUBMISSIONS	DATE

LIGHTING REFERENCE NOTES

- REFER TO SHEET E2.01-E2.03 FOR ELECTRICAL DETAILS.
- REFER TO SHEET E2.01 FOR ELECTRICAL NOTES, SYMBOLS, AND SCHEDULES.
- REFER TO SHEET E7.01 FOR ELECTRICAL RISER DIAGRAMS.
- REFER TO SHEET E7.02 FOR ELECTRICAL PANEL SCHEDULES.

GENERAL LIGHTING NOTES

NOTES:

- ALL EXIT LIGHTS TO BE CIRCUITED ON LOCAL AREA EMERGENCY LIGHT CIRCUIT ON UN-SWITCHED LEG.

OCCUPANCY/VACANCY SENSOR TABLE

SENSOR TYPE	LOCATION
OCCUPANCY SENSOR	CORRIDOR, RESTROOM, STORAGE, UTILITY SPACES
VACANCY SENSOR	CLASSROOM, OFFICE, BREAK ROOM, CONFERENCE, MULTI-PURPOSE

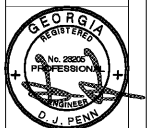
NOTES AND SYMBOL

JOHN A. TUTTEN & ASSOCIATES
 ARCHITECTS
 4680 U.S. HIGHWAY 17 NORTH
 BRUNSWICK, GEORGIA 31525
 www.jatuten.com

GLYNN ACADEMY HIGH SCHOOL
 SCIENCE BLDG. (5015) MODERNIZATION
 1001 MANSFIELD ST. BRUNSWICK GA, 31520
 GLYNN COUNTY BOARD OF EDUCATION

CAPITAL OUTLAY
 PROJECT # TBD
 SYSTEM CODE: 663
 SCHOOL CODE: 4752
 FTE: 1793

LIGHTING PLAN - PENTHOUSE

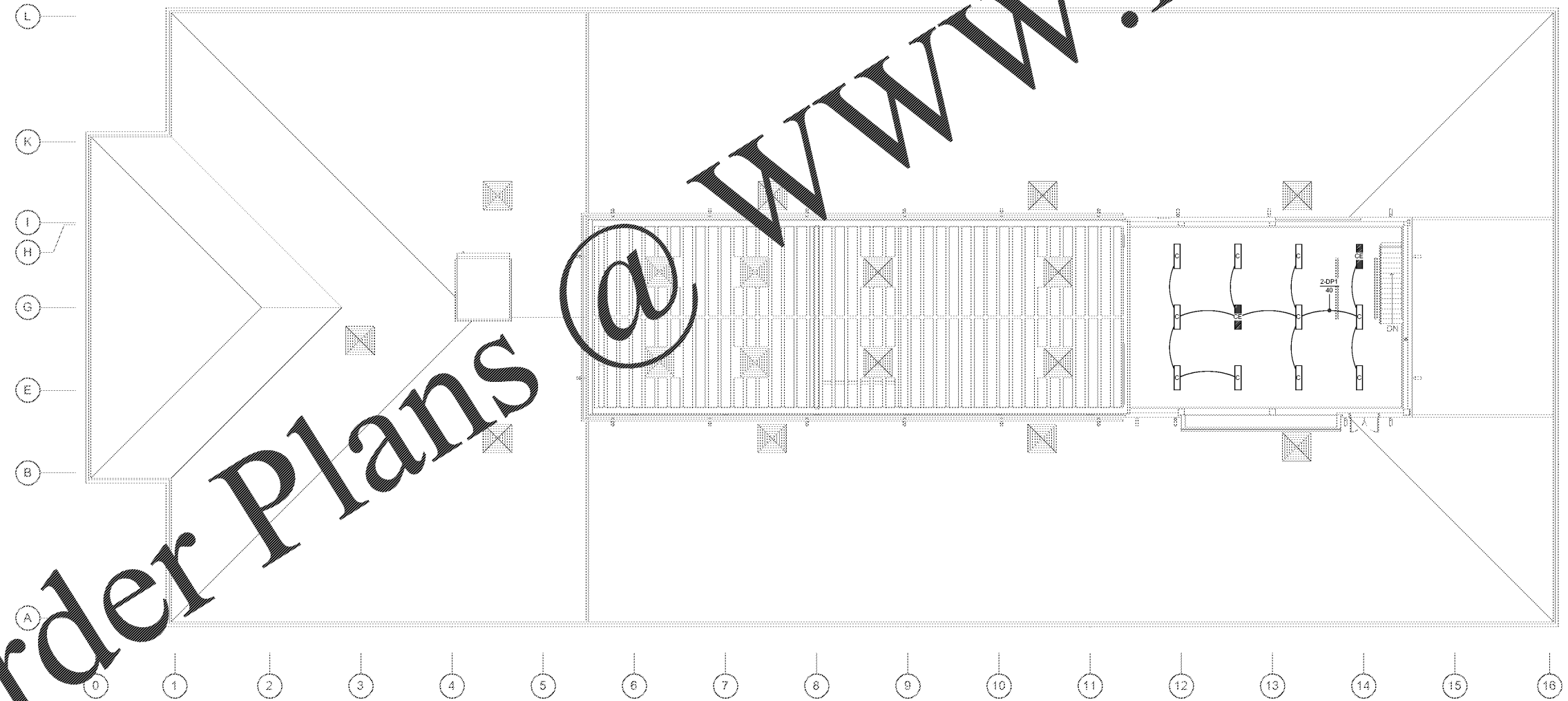


ISSUED FOR:
 BID SET

JV, MP
 DRAWN BY
 DPCE
 CHECKED BY
 DJP
 APPROVED BY
 01/19/19
 PROJECT DATE
 1802
 PROJECT NUMBER

SHEET NUMBER:
E2.03

Copyright (c) 2019
 All Rights Reserved.



1 LIGHTING PLAN - PENTHOUSE
 E2.03 SCALE: 1/8" = 1'-0"

1/15/2019 4:12:27 PM C:\Users\jvalde\Documents\17-2015_GA SCIENCE BUILDING MEP\2016_jvalde\ED.M