

NO	REVISION / SUBMISSIONS	DATE

LIGHTING REFERENCE NOTES

- REFER TO SHEET ES-01-ES-03 FOR ELECTRICAL DETAILS.
- REFER TO SHEET ES-01 FOR ELECTRICAL NOTES, SYMBOLS, AND SCHEDULES.
- REFER TO SHEET E7-01 FOR ELECTRICAL RISER DIAGRAMS.
- REFER TO SHEET E7-02 FOR ELECTRICAL PANEL SCHEDULES.

GENERAL LIGHTING NOTES

NOTES:

- ALL EXIT LIGHTS TO BE CIRCUITED ON LOCAL AREA EMERGENCY LIGHT CIRCUIT ON UN-SWITCHED LEG.

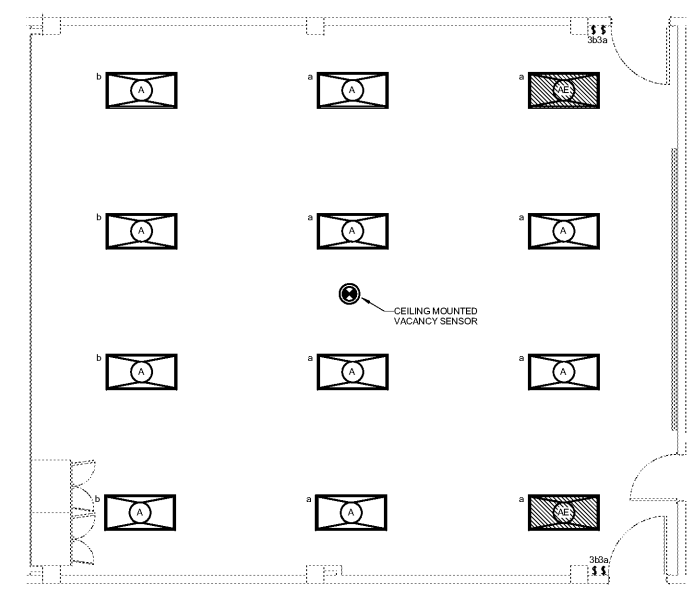
OCCUPANCY/VACANCY SENSOR TABLE

SENSOR TYPE	LOCATION
OCCUPANCY SENSOR	CORRIDOR, RESTROOM, STORAGE, UTILITY SPACES
VACANCY SENSOR	CLASSROOM, OFFICE, BREAK ROOM, CONFERENCE, MULTI-PURPOSE

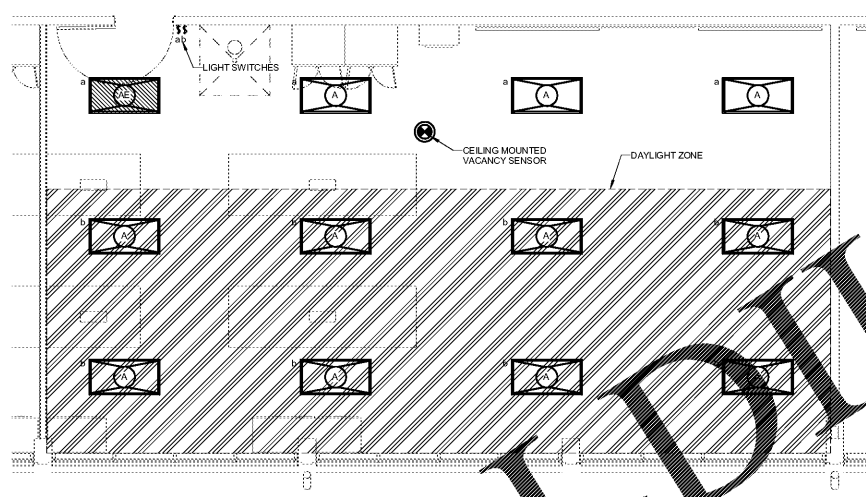
NOTES AND SYMBOL

NIGHT LIGHT FIXTURES TO UNSWITCHED LEG.

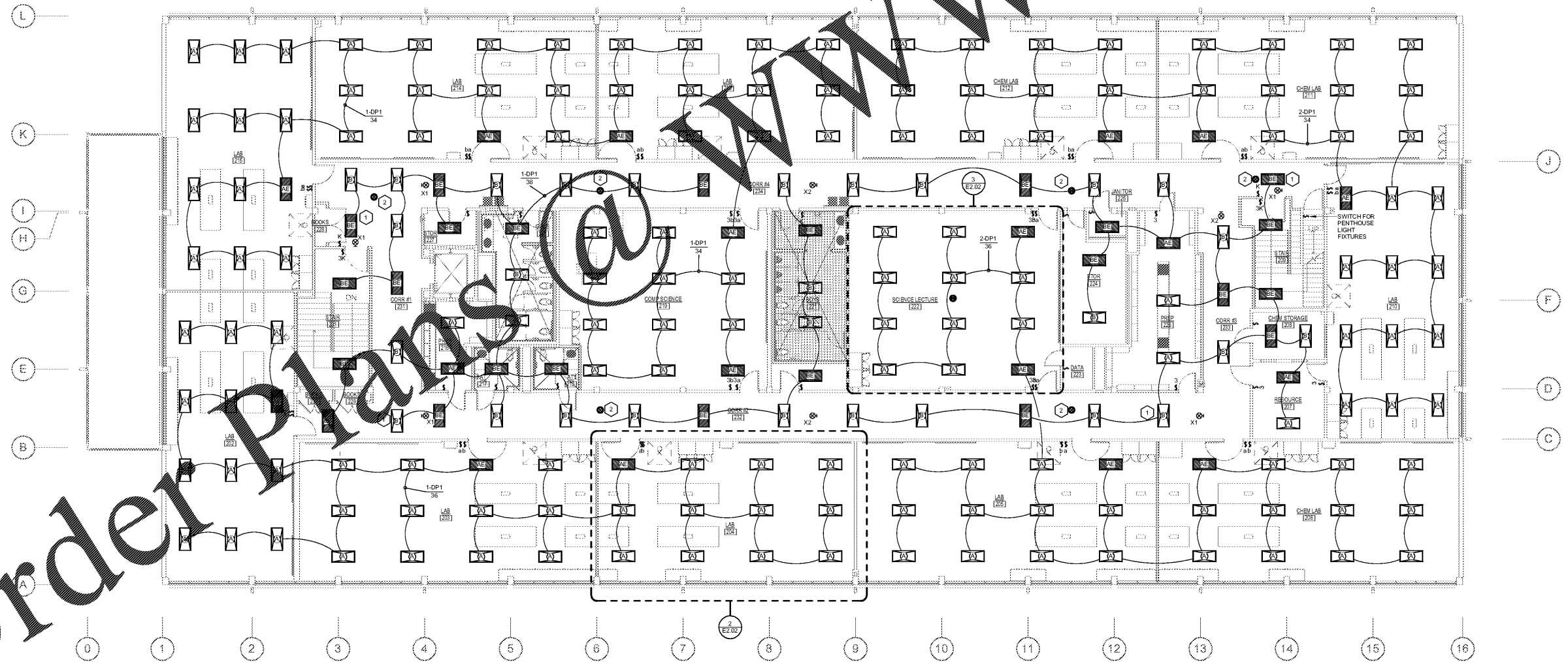
CEILING MOUNTED VACANCY SENSOR FOR CONTROL OF CORRIDOR LIGHTING. REFER TO SPECIFICATIONS FOR ADDITIONAL INFORMATION.



3 LIGHTING CONTROL PLAN - TYPICAL INTERIOR ROOM
E2.02 SCALE: 1/4" = 1'-0"



2 LIGHTING CONTROL PLAN - TYPICAL SCIENCE LAB
E2.02 SCALE: 1/4" = 1'-0"



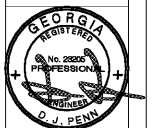
1 LIGHTING PLAN - LEVEL 2
E2.02 SCALE: 1/8" = 1'-0"

JOHN A. TUTEN & ASSOCIATES
ARCHITECTS
4680 U.S. HIGHWAY 17 NORTH
BRUNSWICK, GEORGIA 31525
www.jatuten.com

GLYNN ACADEMY HIGH SCHOOL
SCIENCE BLDG. (5015) MODERNIZATION
1001 MANSFIELD ST. BRUNSWICK GA, 31520
GLYNN COUNTY BOARD OF EDUCATION

CAPITAL OUTLAY
PROJECT # TBD
SYSTEM CODE: 668
SCHOOL CODE: 4752
FTE: 1793

LIGHTING PLAN - LEVEL 2



ISSUED FOR:
BID SET

JV, MP
DRAWN BY
DPCE
CHECKED BY
DJP
APPROVED BY
01/18/19
PROJECT NO.
1802
PROJECT NUMBER

**SHEET NUMBER:
E2.02**

Copyright (c) 2019
All Rights Reserved.



1/15/2019 4:12:35 PM C:\Users\jacob.d...mms17-2015_GA SCIENCE BUILDING MEPV2016_jatuten.EDW