

NO	REVISION / SUBMISSIONS	DATE

MECHANICAL REFERENCE NOTES

1. REFER TO SHEET M5-01-M5-02 FOR MECHANICAL DETAILS.
 2. REFER TO SHEET M6-01 FOR MECHANICAL NOTES, SYMBOLS, AND SCHEDULES.

TYPICAL GRILLES (U.O.N.)

24"x24" 24"x12" 12"x12"

NOTES BY SYMBOL

1. 3/4" CONDENSATE LINE FROM UNIT CONNECTION. PROVIDE AIR SEAL P-TRAP. REFER TO CONDENSATE P-TRAP DETAIL 2M5.03 FOR ADDITIONAL INFORMATION.
 2. CONDENSATE PIPING DOWN IN WALL CHASE TO SINK. MIN. 18" BELOW FINISH FLOOR.
 3. CONDENSATE PIPING ABOVE CEILING.
 4. CONDENSATE PIPING DOWN TO BELOW.
 5. 3/4" CONDENSATE PIPING DOWN IN WALL CHASE TO SINK TAIL PIECE.

JOHN A. TUTEN & ASSOCIATES
 ARCHITECTS
 4680 U.S. HIGHWAY 17 NORTH
 BRUNSWICK, GEORGIA 31525
 www.jatuten.com

GLYNN ACADEMY HIGH SCHOOL
 SCIENCE BLDG. (5015) MODERNIZATION
 1001 MANSFIELD ST. BRUNSWICK GA, 31520
 GLYNN COUNTY BOARD OF EDUCATION

CAPITAL OUTLAY
 PROJECT # TBD
 SYSTEM CODE: 663
 SCHOOL CODE: 4752
 FTE: 1793

CONDENSATE PLAN - PENTHOUSE



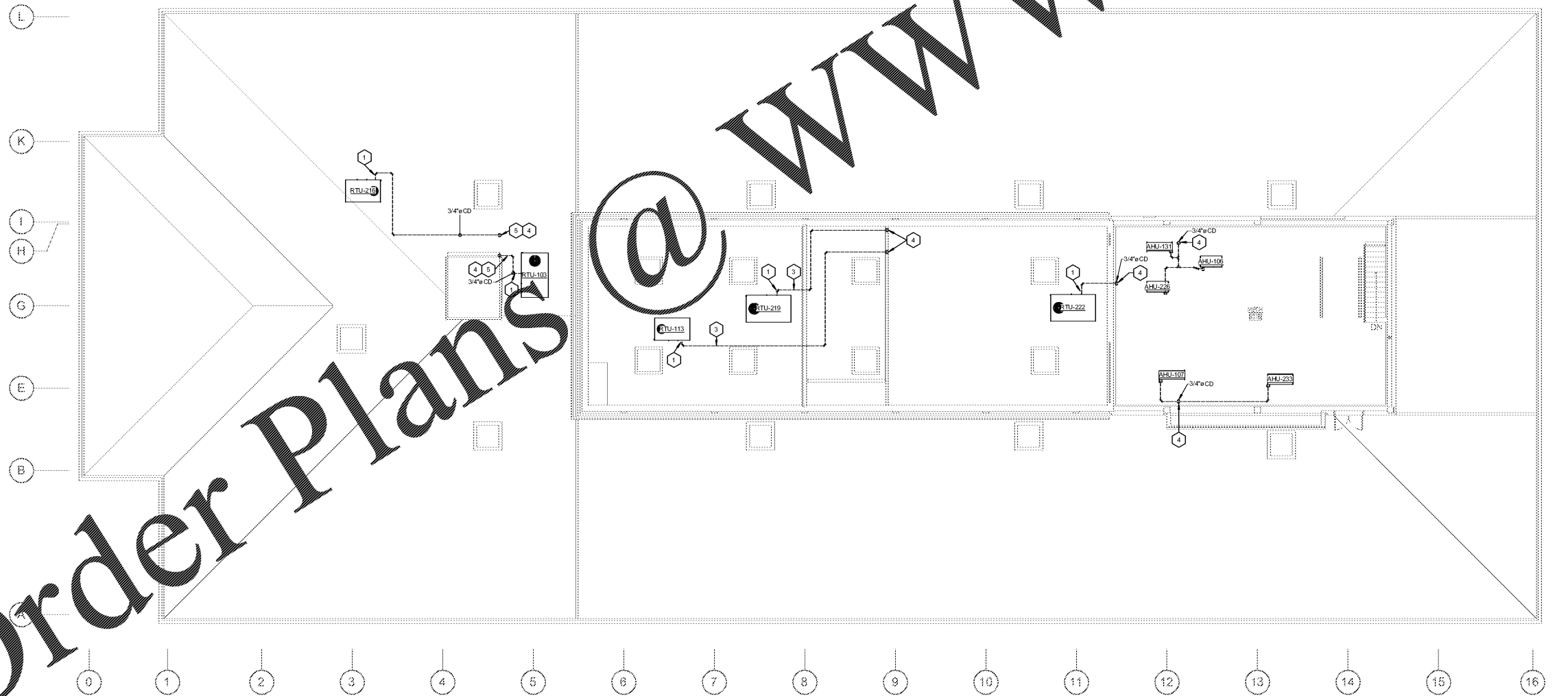
ISSUED FOR:
 BID SET

J.V. MP
 DRAWN BY
 DPCE
 CHECKED BY
 DJP
 APPROVED BY
 01/18/19
 PROJECT DATE
 1802
 PROJECT NUMBER

SHEET NUMBER:
M3.03

Copyright (c) 2019
 All Rights Reserved.

dpce DON PENN CONSULTING ENGINEER
 1001 BELLANA BLVD.
 SUITE 111 SUITE 1400
 WESTLAKE, TX 79092
 P 817.412.2558 | F 817.251.8411



1 CONDENSATE PLAN - PENTHOUSE
 M3.03 SCALE: 1/8" = 1'-0"

Order Plans @ www.LDILine.com

1/15/2019 4:14:59 PM C:\Users\jvalde\Documents\17-2015_GA SCIENCE BUILDING MEP\2016_includes\ED.M