

NO	REVISION / SUBMISSIONS	DATE

MECHANICAL REFERENCE NOTES

1. REFER TO SHEET M5.01-M5.02 FOR MECHANICAL DETAILS.
2. REFER TO SHEET M6.01 FOR MECHANICAL NOTES, SYMBOLS, AND SCHEDULES.

TYPICAL GRILLES (U.O.N.)

24"x24" 24"x12" 12"x12"

NOTES BY SYMBOL

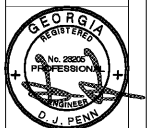
1. ROOF MTD. EXHAUST FAN. REFER TO DETAILS 5 & 6 AND EXHAUST FAN SCHEDULE FOR MORE INFORMATION.
2. PACKAGED ROOF TOP UNIT LOCATED ON ROOF. REFER TO UNIT SUPPORT DETAIL 1 & 02/M5.02.
3. INSTALL SPLIT SYSTEM CONDENSING UNIT ON ROOF RACK PER MANUFACTURER'S ICM AND MAINTAIN ALL MANUFACTURER RECOMMENDED CLEARANCES, ROUTE AND SIZE DRAINAGE PIPING IN STRICT ACCORDANCE WITH MANUFACTURER'S GUIDE. REFER TO M5.02.
4. HANGING CASSETT ON STAND. REFER TO DETAILS 5 & 6 FOR MORE INFORMATION.
5. AIR COOLED CONDENSING UNIT LOCATED ON ROOF. REFER TO UNIT SUPPORT DETAIL 1 & 02. PROVIDE SERVICE CLEARANCE PER MANUFACTURER'S RECOMMENDATION.
6. OUTSIDE EXHAUST AIR LOUVER MOUNTED IN EXTERIOR SOFFIT/WALL. PROVIDE EXACT LOCATION AND SIZE OF LOUVER WITH ARCHITECTURAL DRAWINGS.

JOHN A. TUTEN & ASSOCIATES
ARCHITECTS
4680 U.S. HIGHWAY 17 NORTH
BRUNSWICK, GEORGIA 31525
www.jatuten.com

GLYNN ACADEMY HIGH SCHOOL
SCIENCE BLDG. (5015) MODERNIZATION
1001 MANSFIELD ST. BRUNSWICK GA, 31520
GLYNN COUNTY BOARD OF EDUCATION

CAPITAL OUTLAY
PROJECT # TBD
SYSTEM CODE: 663
SCHOOL CODE: 4752
FTE: 1793

MECHANICAL PLAN - PENTHOUSE

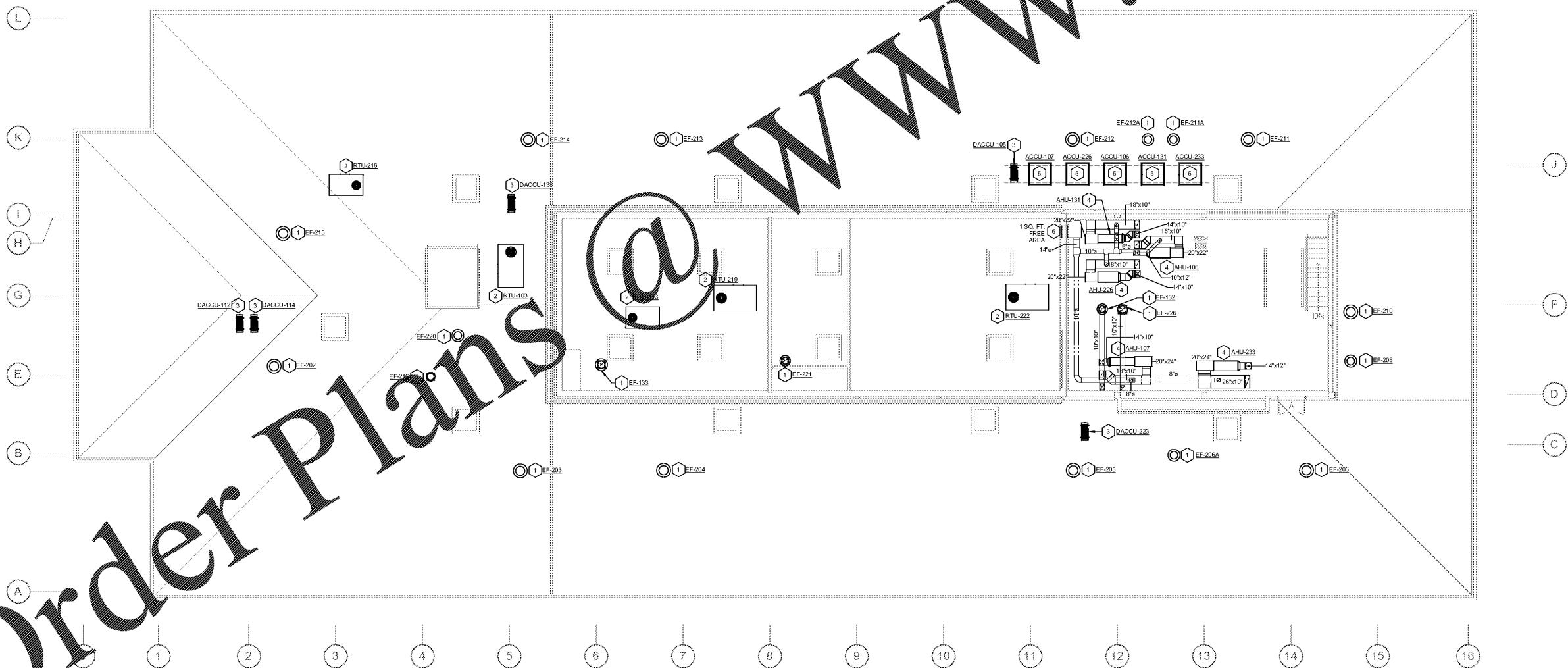


ISSUED FOR:
BID SET

J.V. MP
DRAWN BY
DPCE
CHECKED BY
DJP
APPROVED BY
01/19/19
PROJECT DATE
1802
PROJECT NUMBER

SHEET NUMBER:
M2.03
Copyright (c) 2019
All Rights Reserved.

dpce DON PENN CONSULTING ENGINEER
1001 BELLANA BLVD.
SUITE 110
WEB LAKE, TX 75982
P: 409.412.2588 | F: 409.412.2514



1 MECHANICAL PLAN - PENTHOUSE
M2.03 SCALE: 1/8" = 1'-0"

1/15/2019 4:14:45 PM C:\Users\jvatut\Documents\17-2015_GA_SCIENCE BUILDING MEP\2016_jvatut\m2.03.dwg