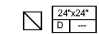

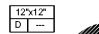


NO	REVISION / SUBMISSIONS	DATE

MECHANICAL REFERENCE NOTES

- REFER TO SHEET M5-01-M5-02 FOR MECHANICAL DETAILS.
- REFER TO SHEET M6-01 FOR MECHANICAL NOTES, SYMBOLS, AND SCHEDULES.

TYPICAL GRILLES (U.O.N.)

NOTES BY SYMBOL

- DUCTWORK DOWN TO LEVEL BELOW. REFER TO FLOOR LEVEL DRAWING FOR CONTINUATION.
- DUCTWORK FROM LEVEL ABOVE REFER TO LEVEL ABOVE DRAWING FOR CONTINUATION.
- MOUNT DUCTLESS SPL. SYSTEMS PER HANDLING UNIT ON WALL AT 8'-0" A.F.F. COORDINATE EXACT MOUNTING LOCATION IN FIELD WITH EQUIPMENT IN ROOM. DO NOT MOUNT OVER ELECTRICAL EQUIPMENT. ROUTE CONDENSATE AS INDICATED.
- REFER TO EXHAUST FAN SCHEDULE FOR SIZES & 6MS-01 AND EXHAUST FAN SCHEDULE FOR MORE INFORMATION.
- COORDINATE DUCTWORK AND DIFFUSERS WITH BULKHEAD AND LOWERED CEILING. REFER TO ARCHITECTURAL DETAIL 5A3.1 FOR MORE INFORMATION.
- EXHAUST SET UP TO EXHAUST FAN ON ROOF. REFER TO LEVEL ABOVE DRAWING FOR CONTINUATION.
- EXHAUST FAN: PROVIDE MANUFACTURER'S OUTSIDE AIR LOUVER. COORDINATE EXACT LOCATION WITH ARCHITECT.
- EXHAUST DUCT FROM FUME HOOD TO EXHAUST FAN ON ROOF. REFER TO EXHAUST FAN SCHEDULE FOR MORE INFORMATION.
- CHEMICAL STORAGE ROOM HI/LOW EXHAUST SYSTEM. PROVIDE STAINLESS STEEL EXHAUST DUCT DOWN IN CHASE TO WALL EXHAUST GRILLE MOUNTED 12" A.F.F. EXTEND EXHAUST DUCT TO ROOF MOUNTED EXHAUST FAN.

JOHN A. TUTEN & ASSOCIATES
 ARCHITECTS
 4680 U.S. HIGHWAY 17 NORTH
 BRUNSWICK, GEORGIA 31525
 www.plattner.com

GLYNN ACADEMY HIGH SCHOOL
 SCIENCE BLDG. (5015) MODERNIZATION
 1001 MANSFIELD ST. BRUNSWICK GA, 31520
 GLYNN COUNTY BOARD OF EDUCATION

CAPITAL OUTLAY
 PROJECT # TBD
 SYSTEM CODE: 668
 SCHOOL CODE: 4752
 FTE: 1798

MECHANICAL PLAN - LEVEL 2

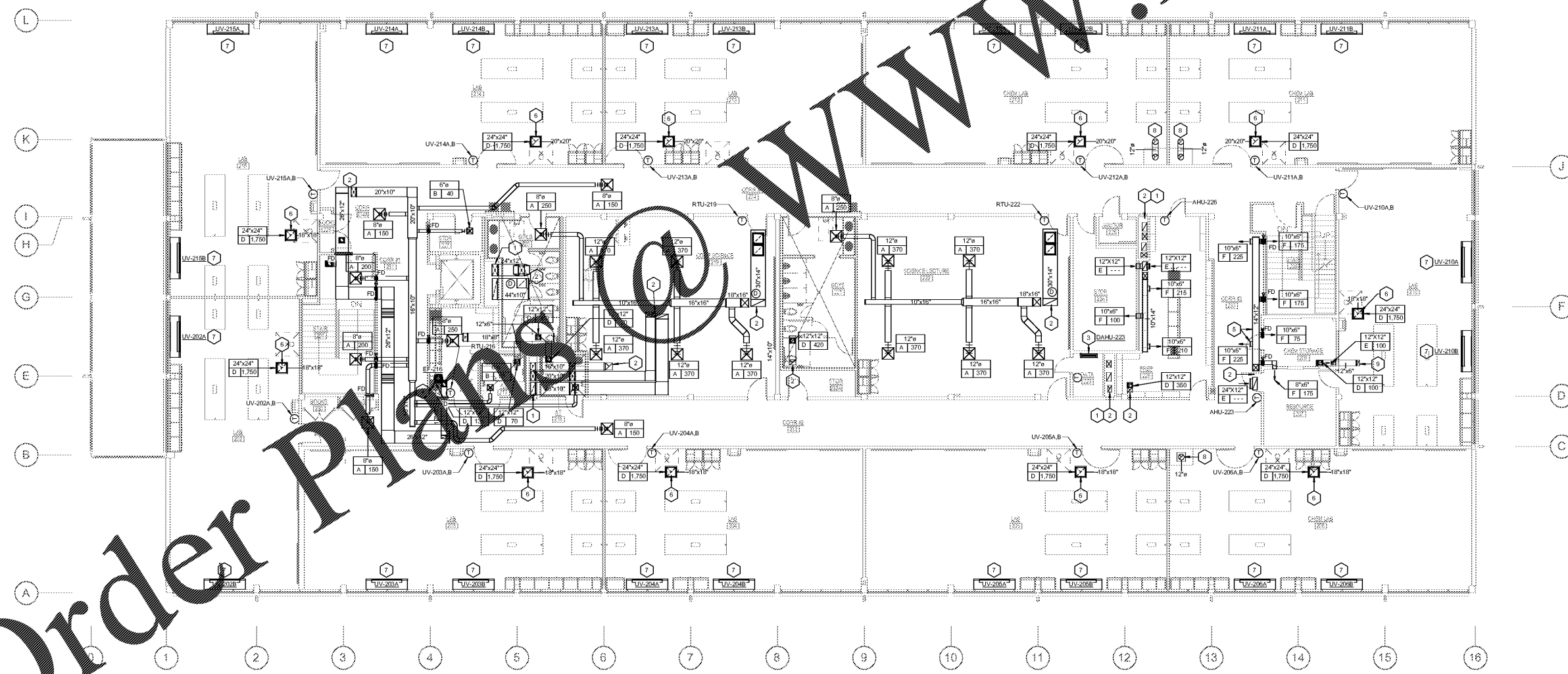


ISSUED FOR:
 BID SET

JV, MP
 DRAWN BY
 DPCE
 CHECKED BY
 DJP
 APPROVED BY
 01/18/19
 PROJECT NO.
 1802
 PROJECT NUMBER

SHEET NUMBER:
M2.02

Copyright (c) 2019
 All Rights Reserved.



1 MECHANICAL PLAN - LEVEL 2
 M2.02 SCALE: 1/8" = 1'-0"

1/17/2019 9:25:56 AM C:\Users\jaldred\Documents\17-2015_GA_SCIENCE BUILDING MEP\2016_jaldred_ID.W

Order Plans @ www.LDILiving.com