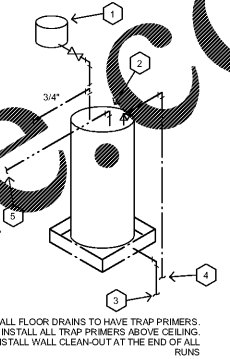


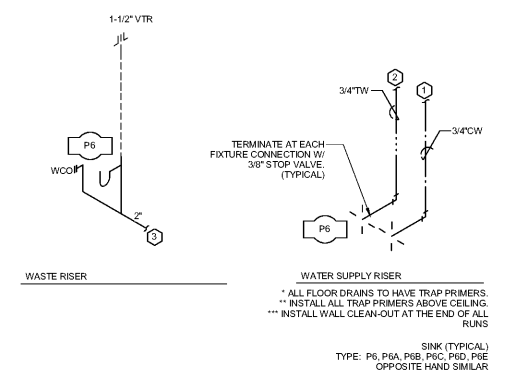
| NO | REVISION / SUBMISSIONS | DATE |
|----|------------------------|------|
| | | |
| | | |
| | | |

- NOTES BY SYMBOL** (THIS SHEET ONLY)
- TO COLD WATER PIPING ABOVE CEILING. SEE PLAN VIEW DRAWINGS FOR CONTINUATION.
 - TO TEMPERED WATER PIPING ABOVE CEILING. SEE PLAN VIEW DRAWINGS FOR CONTINUATION.
 - TO SANITARY SEWER PIPING. SEE PLAN VIEW DRAWINGS FOR CONTINUATION.

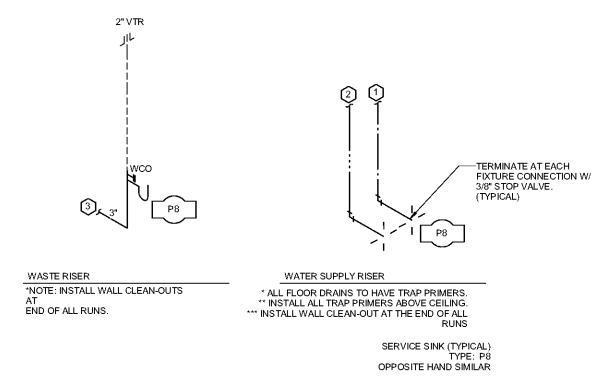
- DETAIL NOTES BY SYMBOL** (THIS DETAIL ONLY)
- EXPANSION TANK FOR DOMESTIC WATER APPLICATION.
 - WATER HEATER. PROVIDE 3" DEEP GALV. PAN W/ SOLDERED SEAMS. PROVIDE W/ ISOLATION VALVES AND THERMOMETER.
 - ROUTE AUX. DRAIN TO OUTDOORS (6" A.F.G. W/ TURN DOWN) OR APPROVED REDUCER.
 - ROUTE TRAP TO OUTDOORS (6" A.F.G. W/ TURN DOWN) OR APPROVED REDUCER.
 - HOT WATER PIPING ABOVE CEILING. REFER TO PLUMBING PIPING SCHEDULES FOR SIZING ROUTE.



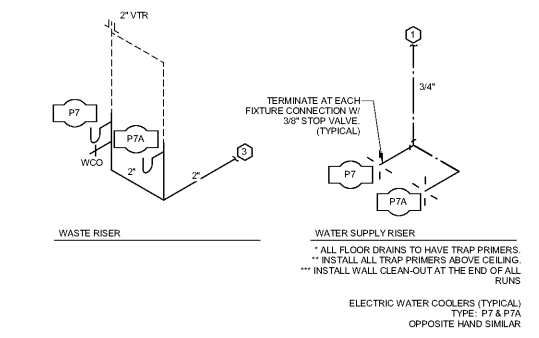
PLUMBING RISER DIAGRAM - WATER HEATER
SCALE: N.T.S.



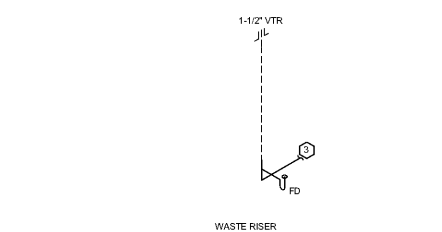
3 PLUMBING RISER DIAGRAM - SINK
SCALE: N.T.S.



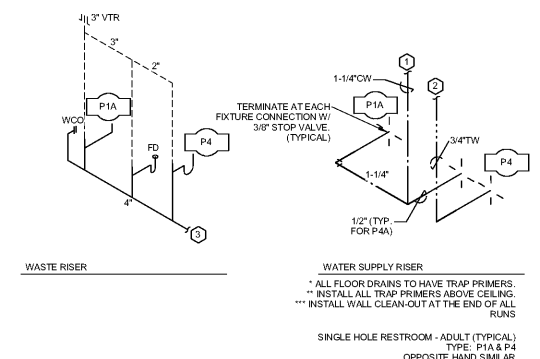
6 PLUMBING RISER DIAGRAM - JANITOR'S SINK
SCALE: N.T.S.



2 PLUMBING RISER DIAGRAM - ELECTRIC WATER COOLERS
SCALE: N.T.S.



5 PLUMBING RISER DIAGRAM - FLOOR DRAIN
SCALE: N.T.S.



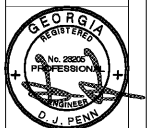
1 PLUMBING RISER DIAGRAM - SINGLE HOLE RESTROOM (ADULT)
SCALE: N.T.S.

JOHN A. TUTEN & ASSOCIATES
ARCHITECTS
4680 U.S. HIGHWAY 17 NORTH
BRUNSWICK, GEORGIA 31525
www.plumline.com

GLYNN ACADEMY HIGH SCHOOL
SCIENCE BLDG. (5015) MODERNIZATION
1001 MANSFIELD ST. BRUNSWICK GA, 31520
GLYNN COUNTY BOARD OF EDUCATION

CAPITAL OUTLAY
PROJECT # TRD
SYSTEM CODE: 663
SCHOOL CODE: 6752
FTE: 1793

PLUMBING RISER DIAGRAMS



ISSUED FOR:
BID SET

J.V. MP
DRAWN BY
DPCE
CHECKED BY
DJP
APPROVED BY

01/19/19
PROJECT DATE
1802
PROJECT NUMBER

SHEET
NUMBER:
P7.01



Order Plans @ www.LDILine.com