

NO	REVISION / SUBMISSIONS	DATE

**MECHANICAL DEMO NOTES**

- DISCONNECT AND REMOVE EXISTING WALL MOUNTED A/C UNIT AND ALL ASSOCIATED COMPONENTS INCLUDING, BUT NOT LIMITED TO, PIPING, DUCT WORK, DIFFUSERS, HOSES, RETURN GRILLES, CONTROLS, T-STATS, ETC.
- DISCONNECT AND REMOVE EXISTING ROOF-TOP UNITS. PREPARE OPENING FOR INSTALLATION OF NEW ROOFTOP UNIT AND ASSOCIATED CURB. REFER TO MECHANICAL PLANS FOR ADDITIONAL INFORMATION.
- DISCONNECT AND REMOVE ALL EXHAUST FANS. REMOVE ALL ASSOCIATED DUCTWORK AND GRILLES.
- CAP ALL ROOF PENETRATIONS NOT BEING REUSED.
- DISCONNECT AND REMOVE EXISTING DUCTWORK AND MECHANICAL SYSTEMS, INCLUDING BUT NOT LIMITED TO DIFFUSERS, GRILLES, CONDENSATE PIPING, FITTINGS, AND ALL ASSOCIATED COMPONENTS.

**IMPORTANT DEMO NOTES**

- REFER TO ARCHITECTS PHASING PLAN FOR PHASING OF ALL DEMOLITION.
- COORDINATE DEMOLITION WITH ALL TRADES.
- EQUIPMENT NOTED TO BE REMOVED WILL REQUIRE POWER DISCONNECTED.
- ADDITIONAL DEMOLITION AND REPAIR MAY BE REQUIRED FOR ACCESS TO EXISTING MECHANICAL AND/OR ELECTRICAL EQUIPMENT. ITEMS SUCH AS DUCTWORK, ACCESSORIES, EXISTING PLUMBING LINES AND EXISTING ELECTRICAL DEVICES, CONDUITS AND CONDUCTORS, SHALL BE COORDINATED WITH OTHER TRADES AS NEEDED.
- VARIOUS SYSTEMS NOTED TO BE REMOVED WILL NEED TO REMAIN IN OPERATION FOR THE DURATION OF CONSTRUCTION. REFER TO ARCHITECTS PHASING PLANS. OWNER HAS FIRST RIGHT OF REFUSAL FOR ALL DEMOLITION SALVAGE. COORDINATE WITH OWNER'S REP.
- MECHANICAL AND/OR ELECTRICAL DEVICES WHICH ARE PART OF AN EXISTING SYSTEM STILL BEING USED AND DEVICES NOT SHOWN TO BE REMOVED SHALL BE PROTECTED AND REMAIN IN OPERATION.
- BUILDING PLAN IS DIAGRAMMATIC ONLY. SOME DIFFERENCES OCCUR BETWEEN PLANS AND ACTUAL BUILDING. CONTRACTOR TO FAMILIARIZE HIMSELF WITH BUILDING AND VERIFY ACTUAL BUILDING LAYOUT.
- DO NOT SCALE DRAWINGS FOR SCOPE OR MATERIAL. VERIFY ALL CRITICAL AREA DIMENSIONS PRIOR TO BIDDING.
- ALL FLOORS AND WALLS SHALL BE PROTECTED FROM DAMAGE AND DAMAGE BY CONSTRUCTION FLYWOOD, MARSHALS FOR FLOORS, AND OTHER DAMAGE. PROTECTED WITH TARPS, 1/2" SHEETING, OR OTHER PROTECTED METHOD.

**PLUMBING DEMO NOTES**

- DISCONNECT AND REMOVE ALL EXISTING PLUMBING FIXTURES INCLUDING BUT NOT LIMITED TO WATER CLOSETS, URINALS, LAVATORIES, SINKS, DRINKING FOUNTAINS, WATER HEATER AND ALL ASSOCIATED WATER SUPPLY AND SANITARY SEWER PIPING WHERE POSSIBLE.
- REMOVE EXISTING FLOOR DRAIN/FLOOR SINK, OR CLEAN OUT. SAW CUT AS NECESSARY. CAP ABANDONED ASSOCIATED WASTE LINE BELOW FLOOR. PATCH SLAB TO MATCH EXISTING. COORDINATE PAVING WITH ARCHITECT.
- DISCONNECT AND REMOVE EXISTING DOMESTIC COLD WATER, TEMPERED WATER, SANITARY SEWER, AND GAS PIPING WHERE SHOWN. FIELD VERIFY EXACT LOCATION. REMOVE ALL EXISTING HANGERS AND SUPPORTS. VALVE AND CAP ABANDONED WATER LINES. CAP ABANDONED WASTE AND VENT LINES BELOW FLOORS, IN WALLS, AND ABOVE CEILINGS. FIELD VERIFY EXACT LOCATION OF ALL PIPING PRIOR TO DEMO.

**ELECTRICAL DEMO NOTES**

**DISCONNECT AND REMOVE ALL EXISTING ELECTRICAL, LIGHTING, AUXILIARY, DATA AND COMMUNICATIONS SYSTEMS:**

**POWER**

- RECEPTACLES, FLOOR BOXES AND J-BOXES.
- POWER DISTRIBUTION PANELBOARDS AND TRANSFORMERS. CONTRACTOR SHALL FIELD VERIFY LOCATIONS OF ALL EXISTING ELECTRICAL PANELS, LIGHTS AND ASSOCIATED CONTROLS, EMERGENCY LIGHTING, AND EXIT SIGNS.

**DATA AND COMMUNICATIONS**

- TELEPHONE DEVICES. REMOVE ALL CABLEING AND LOCAL SWITCHES BACK TO IDF/MDP.
- PROTECTORS AND ASSOCIATED AV SYSTEM AND ALL ASSOCIATED ELECTRICAL AV COMPONENTS, INPUT PLATES, AND ALL ASSOCIATED SUPPORTS.
- LOCAL SOUND SYSTEM AND ASSOCIATED CABLEING/INFRASTRUCTURE.

**FIRE ALARM**

- FACP AND FIRE ALARM SYSTEM, INCLUDING ALL DEVICES AND WIRING.

**AUXILIARY**

- ELECTRICAL CONNECTION TO PA RACK. REMOVE ALL CONDUITS, CONDUCTORS, J-BOXES, AND EQUIPMENT DISCONNECTS. REMOVE ALL PA SYSTEM EQUIPMENT AND ALL ASSOCIATED CABLEING IN ITS ENTIRETY.

**DISCONNECT AND REMOVE ALL EXISTING POWER SUPPLY TO EXISTING MECHANICAL AND PLUMBING EQUIPMENT IN THEIR ENTIRETY SUCH AS, BUT NOT LIMITED TO:**

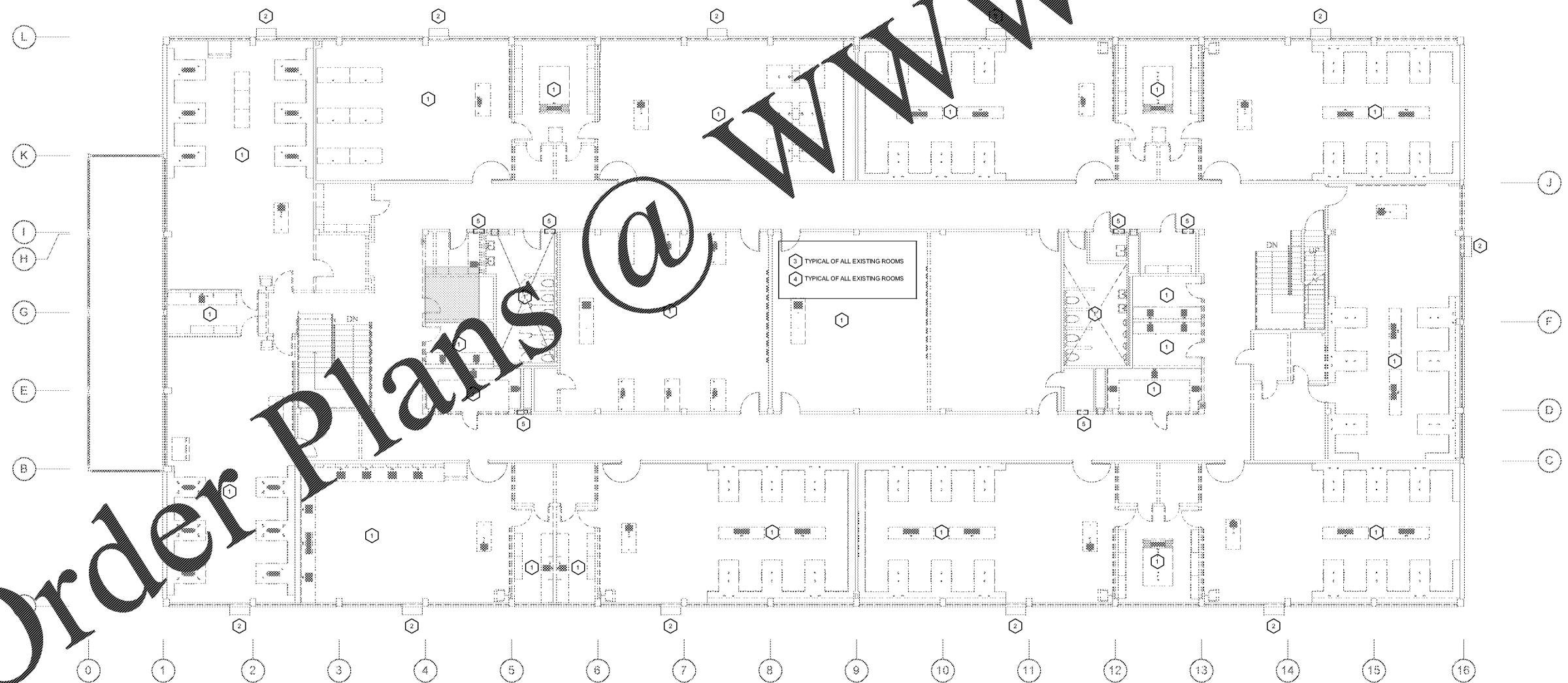
- ELECTRICAL CONNECTION TO WATER HEATER. REMOVE ALL CONDUITS, CONDUCTORS, J-BOXES, EQUIPMENT DISCONNECT AND CIRCUIT BREAKER.
- ELECTRICAL CONNECTION TO EXHAUST FAN. REMOVE ALL ASSOCIATED CONDUITS, CONDUCTORS, AND DISCONNECTS.
- ELECTRICAL CONNECTIONS TO EXISTING ROOF TOP AND WALL MOUNTED MECHANICAL EQUIPMENT. REMOVE ALL CONDUITS, CONDUCTORS, AND DISCONNECTS.
- REMOVE ALL ABANDONED ELECTRICAL AND LIGHTING EQUIPMENT AND ACCESSORIES.

**NOTES BY SYMBOL**

- DISCONNECT AND REMOVE EXISTING PLUMBING FIXTURES, FLOOR SINKS, AND ALL ASSOCIATED WATER SUPPLY AND SANITARY SEWER PIPING WHERE POSSIBLE. VALVE AND CAP ABANDONED WATER LINES. CAP ABANDONED WASTE AND VENT LINES BELOW FLOORS, IN WALLS, AND ABOVE CEILINGS. FIELD VERIFY EXACT LOCATION OF ALL PIPING PRIOR TO DEMO.
- DISCONNECT AND REMOVE EXISTING A/C UNIT AND ALL ASSOCIATED ELECTRICAL DUCTWORK AND CONDUCTORS. REMOVE ALL ASSOCIATED SUPPORTS, DIFFUSERS AND GRILLES.
- DISCONNECT AND REMOVE EXISTING LIGHT FIXTURES. REMOVE ALL ASSOCIATED SWITCHES, CONTROLS, DEVICES, CONDUIT, AND CONDUCTORS IN THEIR ENTIRETY BACK TO EXISTING ELECTRICAL PANEL. REMOVE EXISTING CONDUITS AS PERMITTED BY NEC. REFER TO ELECTRICAL DRAWINGS FOR NEW LIGHT FIXTURE LOCATIONS AND CIRCUIT INFORMATION.

DISCONNECT AND REMOVE EXISTING RECEPTACLES, DATA, PHONE AND AUXILIARY DEVICES. REMOVE ALL ASSOCIATED ELECTRICAL CONDUIT AND CONDUCTORS BACK TO EXISTING ELECTRICAL PANEL. REUSE EXISTING CONDUITS AS PERMITTED BY NEC. REFER TO ELECTRICAL DRAWINGS FOR NEW ELECTRICAL FIXTURE LOCATIONS AND CIRCUIT INFORMATION.

- DISCONNECT AND REMOVE EXISTING ELECTRICAL PANEL. REMOVE ALL ASSOCIATED CONDUIT AND CONDUCTORS BACK TO EXISTING MDP.



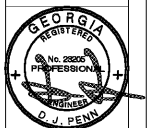
**MEP DEMO PLAN - LEVEL 2**  
SCALE: 1/8" = 1'-0"

JOHN A. TUTTIN & ASSOCIATES  
ARCHITECTS  
4680 U.S. HIGHWAY 17 N. SUITE 100  
BRUNSWICK, GEORGIA 31525  
www.plans.com

GLYNN ACADEMY HIGH SCHOOL  
SCIENCE BLDG. (5015) MODERNIZATION  
1001 MANSFIELD ST. BRUNSWICK GA, 31520  
GLYNN COUNTY BOARD OF EDUCATION

CAPITAL OUTLAY  
PROJECT # TBD  
SYSTEM CODE: 668  
SCHOOL CODE: 4752  
FTE: 1798

MEP DEMO PLAN - LEVEL 2



ISSUED FOR:  
BID SET

J.V. MP  
DRAWN BY  
DPCE  
CHECKED BY  
DJP  
APPROVED BY  
01/18/19  
PROJECT NO.  
1802  
PROJECT NUMBER

SHEET NUMBER:  
**MED2.02**

dpce  
DON PENN CONSULTING ENGINEER  
100 BRANA BLVD.  
SUITE 140  
WEB LAKE, TX 75992  
P 817.251.8411

1/15/2019 4:12:39 PM C:\Users\jvallen\Documents\17-2015\_GA\_SCIENCE BUILDING\_MEPV2016\_jvallen\_ID.dwg