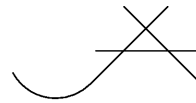


# GLYNN ACADEMY HIGH SCHOOL SCIENCE BLDG. (5015) MODERNIZATION

1001 MANSFIELD ST. BRUNSWICK GA, 31520



JOHN A. TUTEN AND ASSOCIATES -- ARCHITECTS

4680 Hwy 17 North  
Brunswick, Georgia 30525  
Phone: (912) 265-8686  
Fax: (912) 267-6409  
johnt@johntuten.com

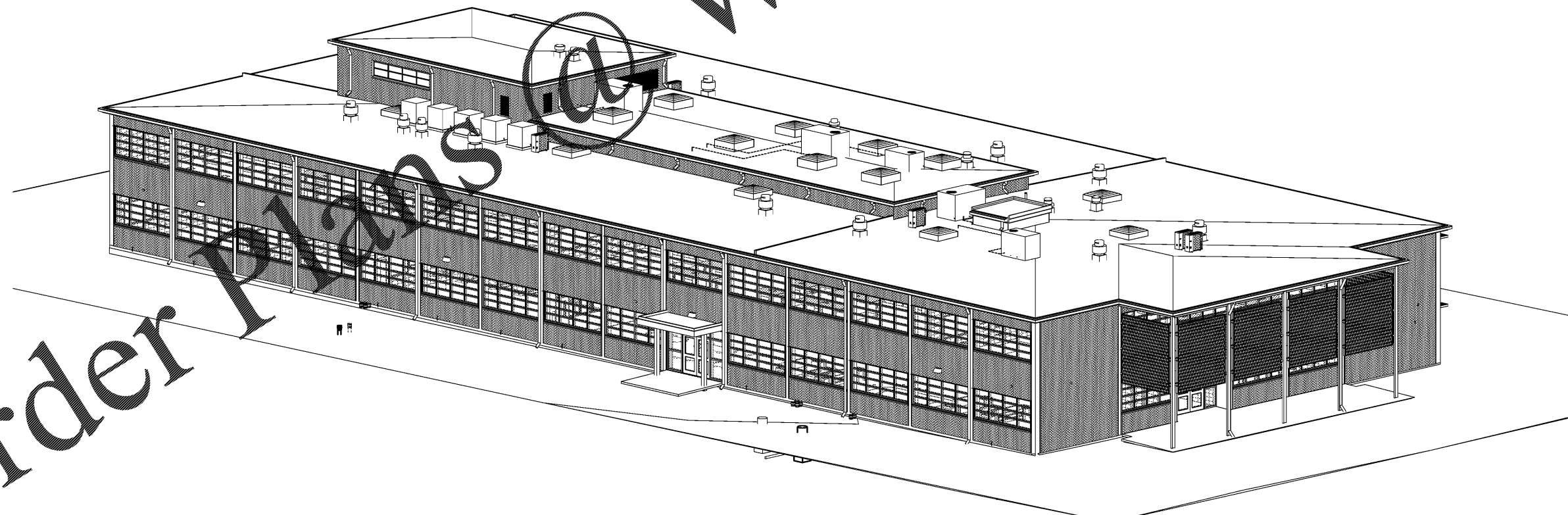
STRUCTURAL ENGINEER:  
W. Hunter Saussy III, PC  
400 E Johnny Mercer Boulevard  
Savannah, Georgia 31410  
Phone: (912) 898-8255  
Fax: (912) 898-1882  
hsaussy@saussyengineering.com

OWNER - DEVELOPER:  
Glynn County Board of Education  
Maintenance Office  
Attn: Mr. Al Boudreau  
200 Emory Dawson Drive  
Brunswick, Georgia 31520  
Phone: (912) 577-0547  
Fax: (912) 267-4183  
boudreau@glynn.k12.ga.us

MEP ENGINEER:  
Don Penn Consulting Engineer  
1301 Solana Blvd.  
Bldg. 1 - Suite 1420  
Westlake, Texas 76262  
Phone: 817-410-2858  
Fax: 817-251-8411  
JValdez@iegltd.com



VOLUME 2 OF 2



JOHN A. TUTEN & ASSOCIATES  
ARCHITECTS  
4680 U.S. HIGHWAY 17 NORTH  
BRUNSWICK, GEORGIA 31525  
www.johntuten.com

GLYNN ACADEMY HIGH SCHOOL  
SCIENCE BLDG. (5015) MODERNIZATION  
1001 MANSFIELD ST. BRUNSWICK GA, 31520  
GLYNN COUNTY BOARD OF EDUCATION

CAPITAL OUTLAY  
PROJECT # TBD  
SYSTEM CODE: 663  
SCHOOL CODE: 4752  
FTE: 1793

COVER SHEET - VOLUME 2 OF 2



ISSUED FOR  
BID SET

DRAWN BY  
CHECKED BY  
APPROVED BY  
01/18/19  
PROJECT DATE  
1802  
PROJECT NUMBER

SET NUMBER:

Copyright (c) 2019  
All Rights Reserved

1/18/2019 7:37:56 AM C:\Users\jmt\Documents\Revit Local\1802\_GA\_Science Building\1802\_Science Building.rvt

Order Plans

WWW.DILine.com