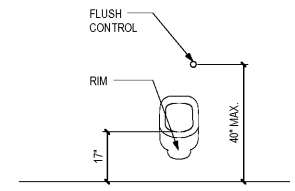
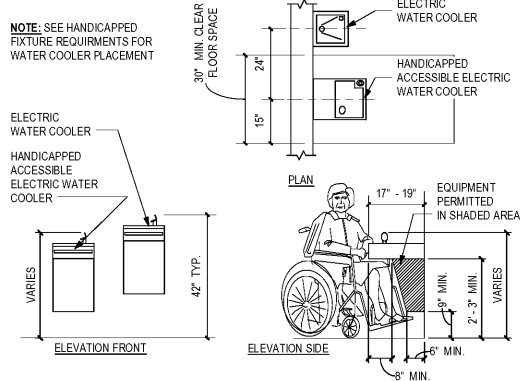


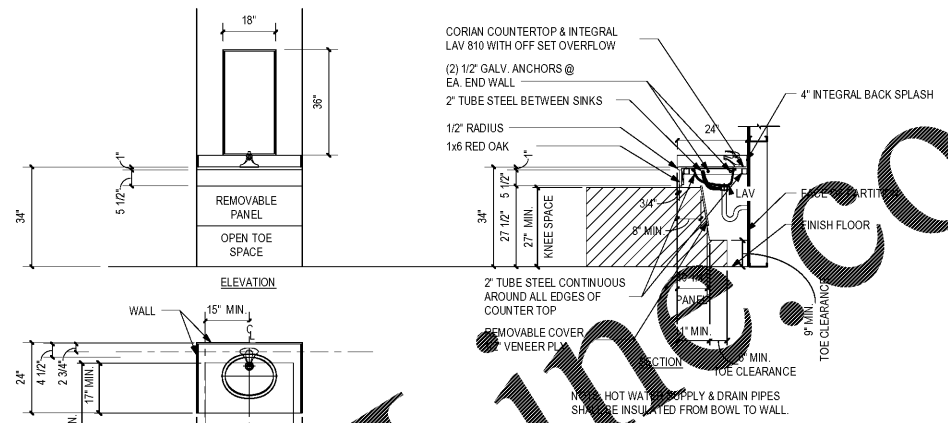
NO	REVISION / SUBMISSIONS	DATE



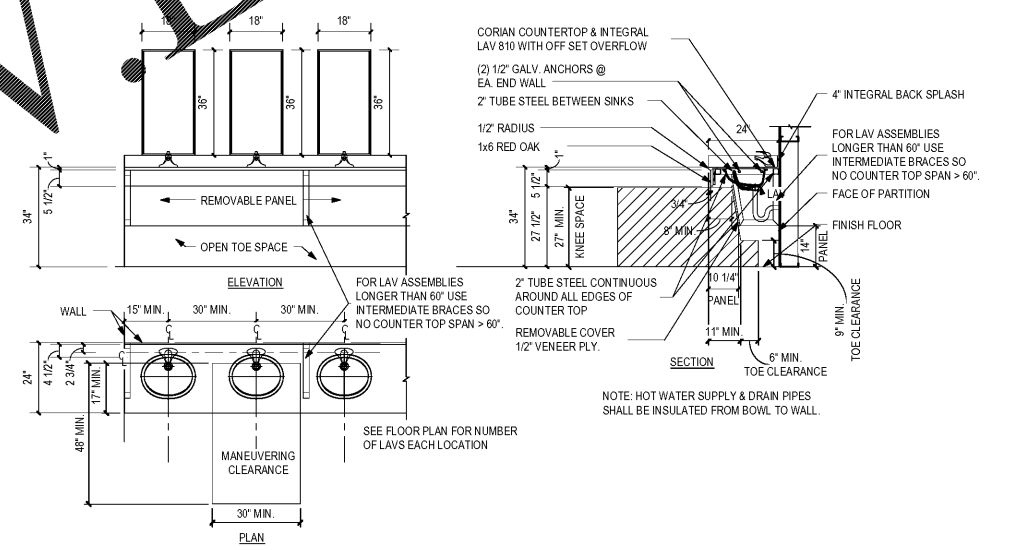
4 URINAL - (AT)
A16.1 SCALE: 1/2" = 1'-0"



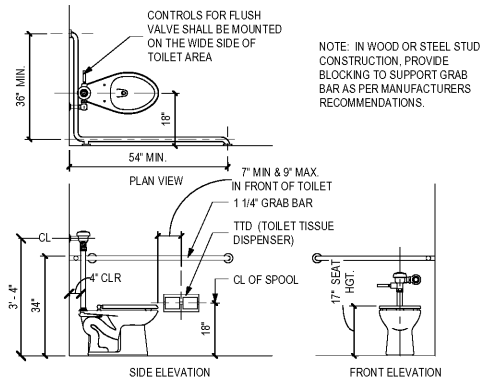
5 ELECTRIC WATER COOLER DETAIL
A16.1 SCALE: 1/2" = 1'-0"



1 SOLID SURFACE LAVATORY (SSL) - (AT)
A16.1 SCALE: 1/2" = 1'-0"



2 SOLID SURFACE LAVATORIES (SSL) (AT)
A16.1 SCALE: 1/2" = 1'-0"



3 (HC) WC, GRAB BAR & TT DISPENSER - AT
A16.1 SCALE: 1/2" = 1'-0"

Order Plans @ www.pdfline.com

JOHN A. TUTEN & ASSOCIATES
ARCHITECTS
4680 U.S. HIGHWAY 17
BRUNSWICK, GEORGIA 31525
www.jatuten.com

GLYNN ACADEMY HIGH SCHOOL
SCIENCE BLDG. (5015) MODERNIZATION
1001 MANSFIELD ST. BRUNSWICK GA, 31520
GLYNN COUNTY BOARD OF EDUCATION

CAPITAL OUTLAY
PROJECT # TRD
SYSTEM CODE: 663
SCHOOL CODE: 4752
FTE: 1793

TOILET ROOM DETAILS



ISSUED FOR:
BID SET

DRAWN BY:
CHECKED BY:
APPROVED BY:
01/19/19
PROJECT DATE:
1802
PROJECT NUMBER:

SHEET NUMBER:
A16.1

Copyright (c) 2019
All Rights Reserved