

NO	REVISION / SUBMISSIONS	DATE

JOHN A. TUTEN & ASSOCIATES
ARCHITECTS
4680 U.S. HIGHWAY 17
BRUNSWICK, GEORGIA 31525
www.jatuten.com

GLYNN ACADEMY HIGH SCHOOL
SCIENCE BLDG. (5015) MODERNIZATION
1001 MANSFIELD ST. BRUNSWICK GA, 31520
GLYNN COUNTY BOARD OF EDUCATION

CAPITAL OUTLAY
PROJECT # TRD
SYSTEM CODE: 663
SCHOOL CODE: 4752
FTE: 1796

ROOFING DETAILS

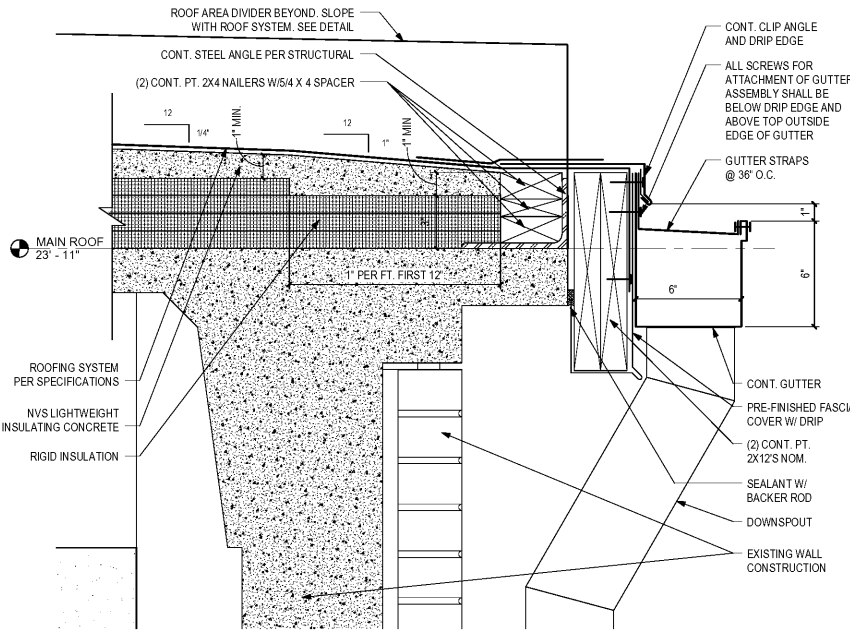


ISSUED FOR:
BID SET

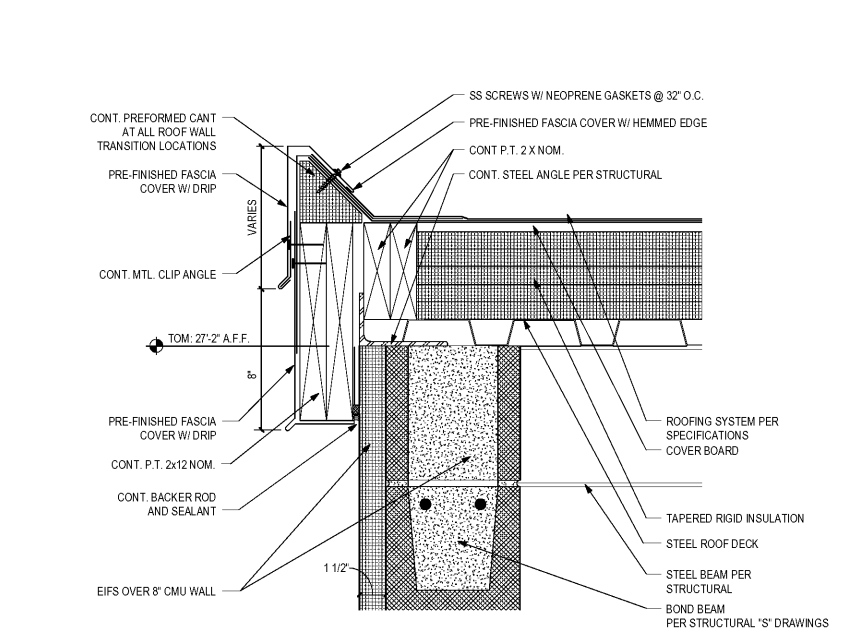
DRAWN BY:
CHECKED BY:
APPROVED BY:
01/19/19
PROJECT DATE:
1802
PROJECT NUMBER

SHEET NUMBER:
A14.1

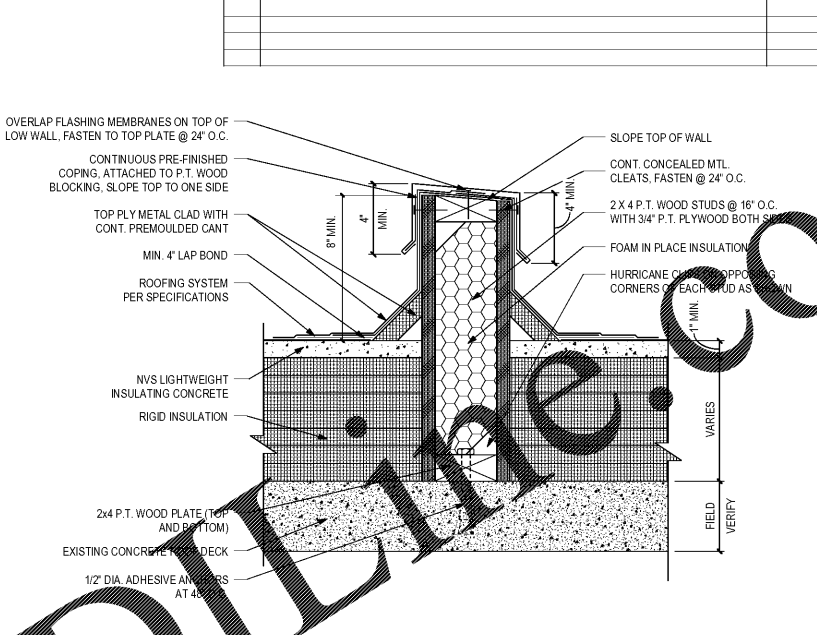
Copyright (c) 2019
All Rights Reserved



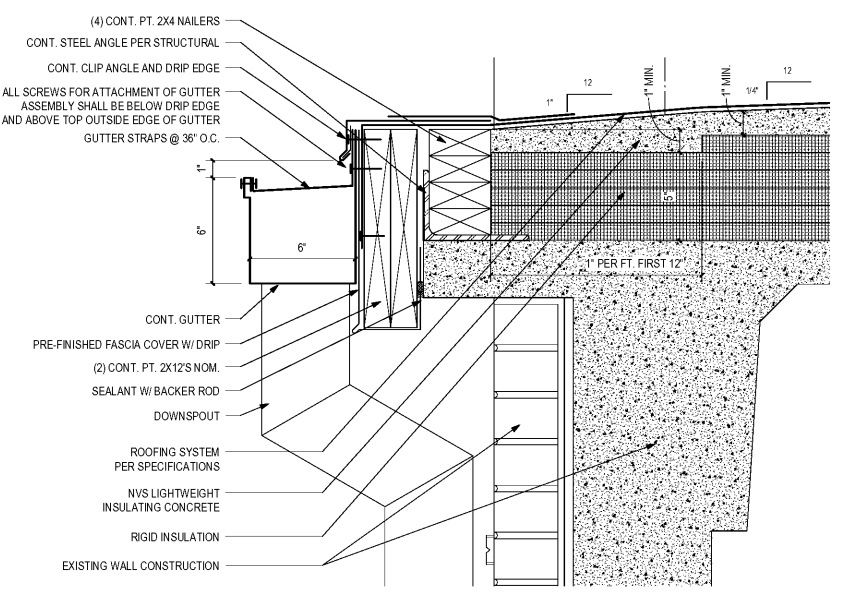
1 NEW ROOF SYSTEM @ NEW GUTTER - MAIN ROOF
A14.1 SCALE: 3" = 1'-0"



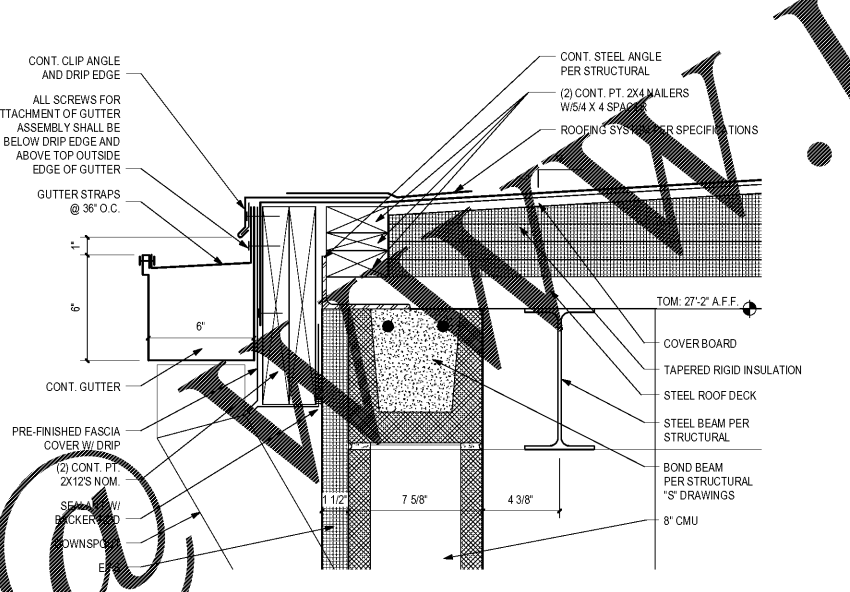
4 NEW ROOF SYSTEM @ ELEVATOR RAKE
A14.1 SCALE: 3" = 1'-0"



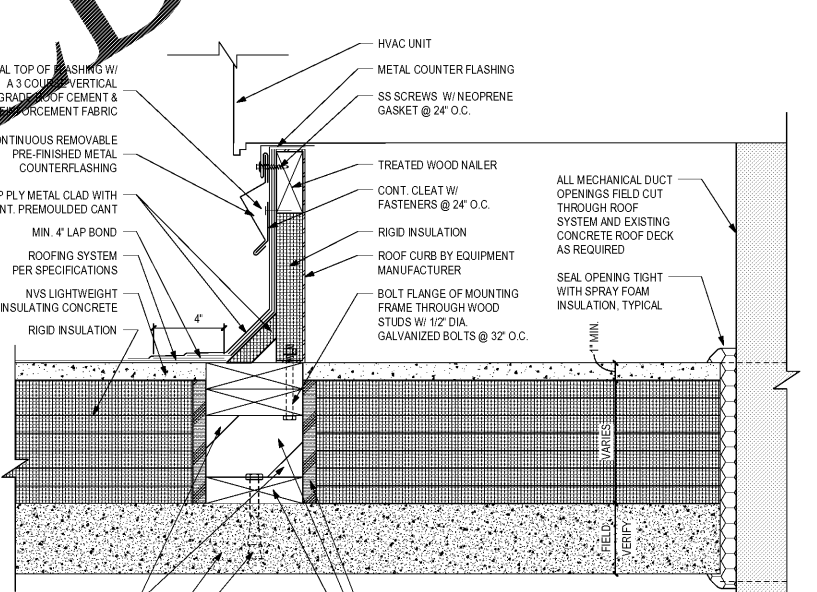
7 ROOF AREA DIVIDER
A14.1 SCALE: 3" = 1'-0"



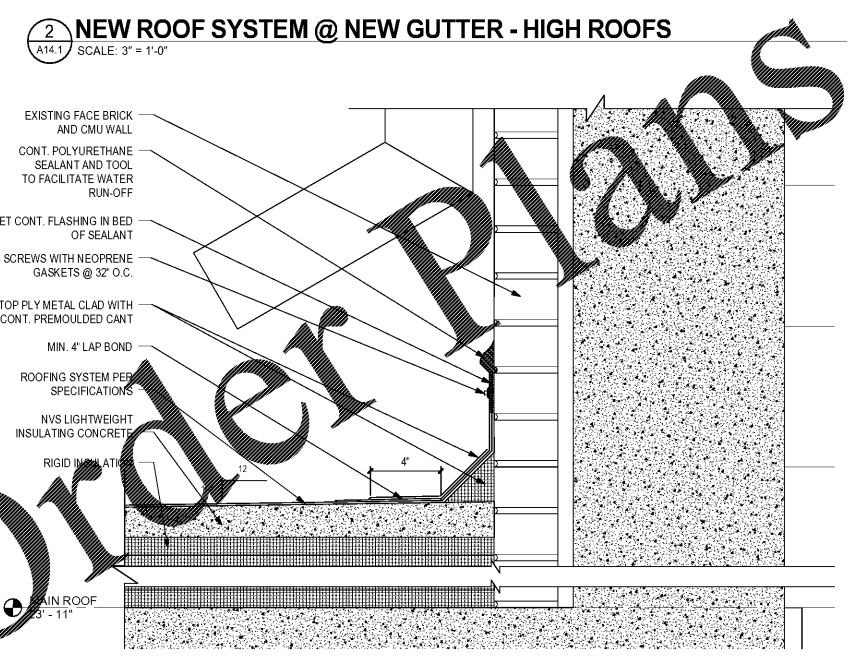
2 NEW ROOF SYSTEM @ NEW GUTTER - HIGH ROOFS
A14.1 SCALE: 3" = 1'-0"



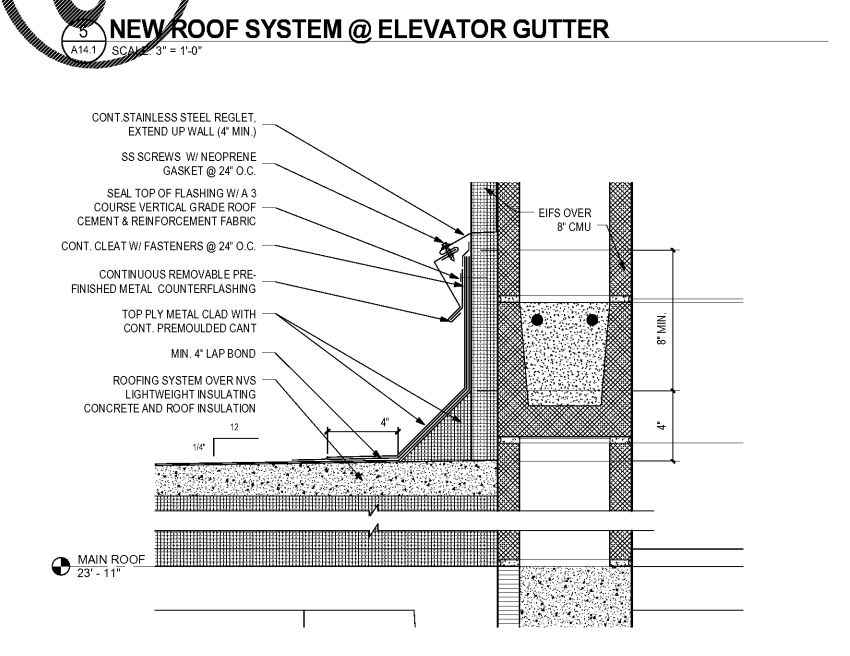
5 NEW ROOF SYSTEM @ ELEVATOR GUTTER
A14.1 SCALE: 3" = 1'-0"



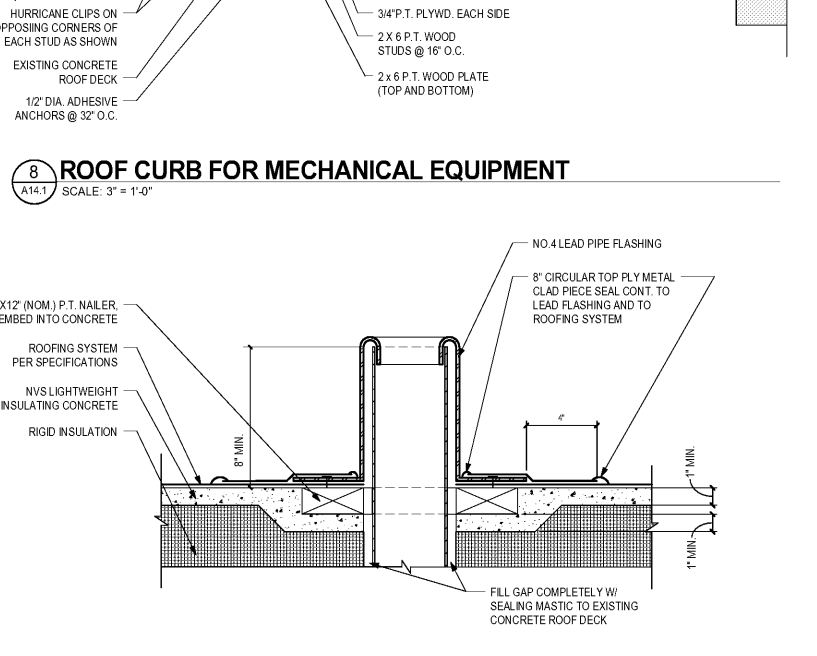
8 ROOF CURB FOR MECHANICAL EQUIPMENT
A14.1 SCALE: 3" = 1'-0"



3 NEW ROOF SYSTEM @ CENTER & PENTHOUSE WALL
A14.1 SCALE: 3" = 1'-0"



6 NEW ROOF SYSTEM @ ELEVATOR WALL
A14.1 SCALE: 3" = 1'-0"



9 ROOFING DETAIL FOR VENT PIPE PENETRATION
A14.1 SCALE: 3" = 1'-0"

Order Plans

1/18/2019 11:25:19 C:\Users\jamt\Documents\Revit\Local1802_GA_Science Building\1802_Science Building.rvt