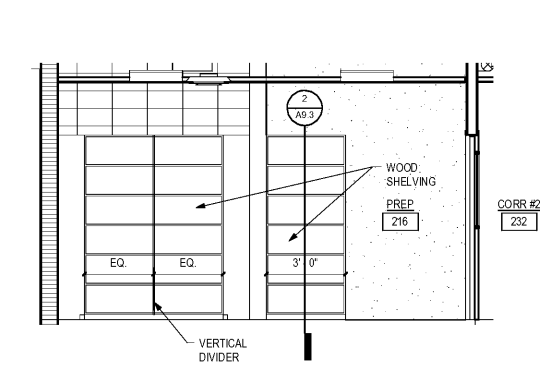
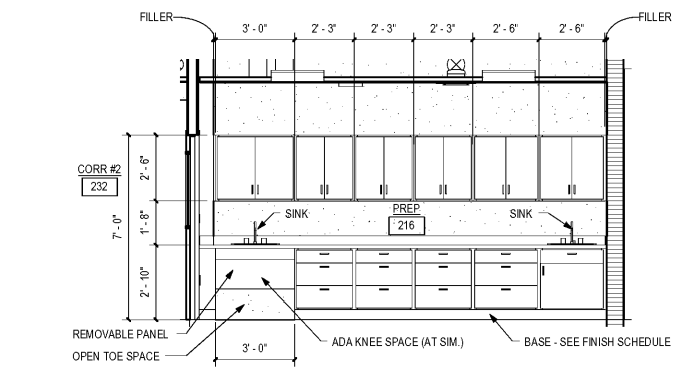


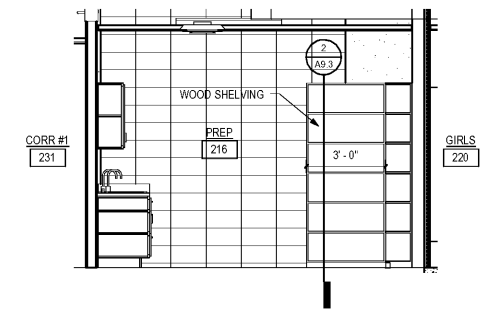
NO	REVISION / SUBMISSIONS	DATE



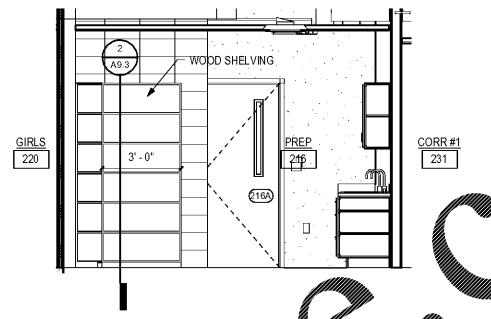
1 PREP ROOM 216 - EAST WALL  
SCALE: 3/8" = 1'-0"



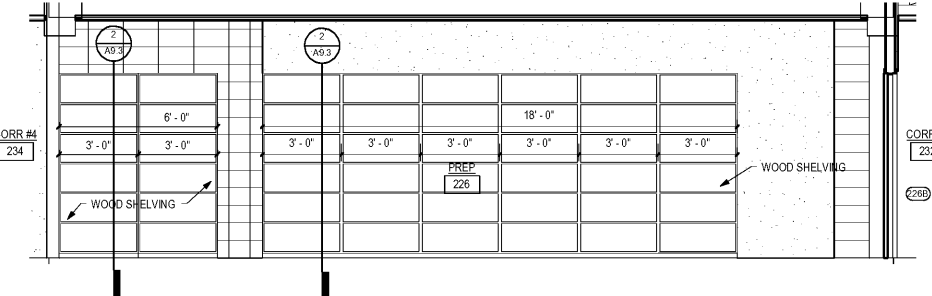
2 PREP ROOM 216 - WEST WALL CASEWORK  
SCALE: 3/8" = 1'-0"



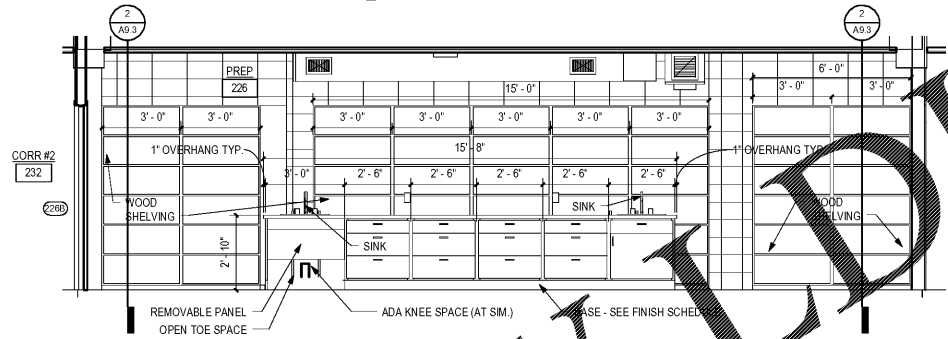
3 PREP ROOM 216 - NORTH WALL  
SCALE: 3/8" = 1'-0"



4 PREP ROOM 216 - SOUTH WALL  
SCALE: 3/8" = 1'-0"



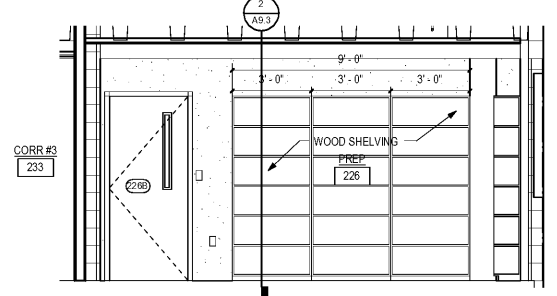
5 PREP ROOM 226 - EAST WALL  
SCALE: 3/8" = 1'-0"



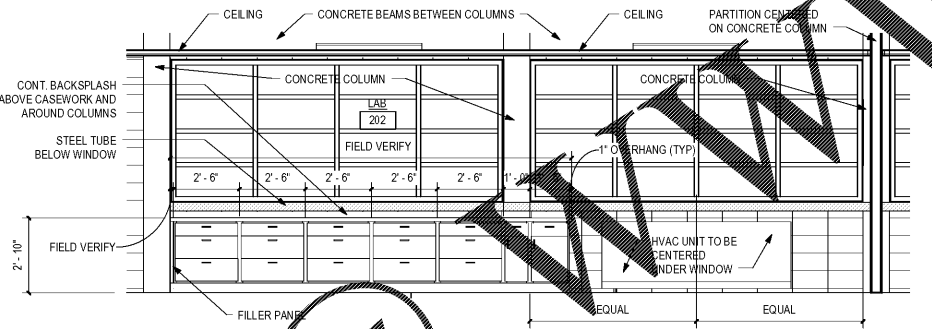
6 PREP ROOM 226 - WEST WALL CASEWORK  
SCALE: 3/8" = 1'-0"



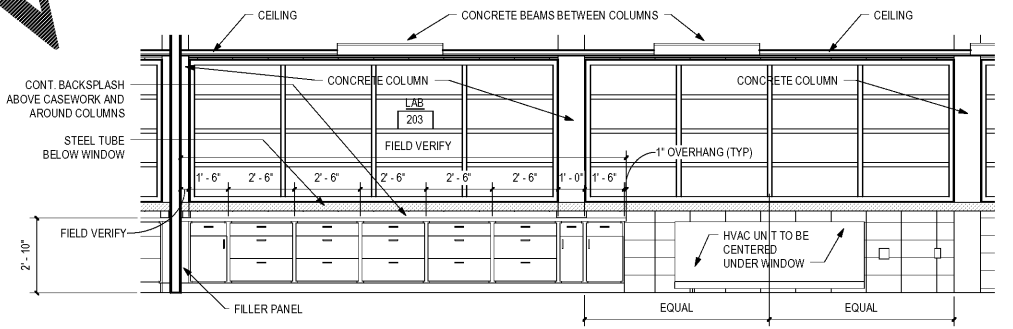
7 PREP ROOM 226 - NORTH WALL  
SCALE: 3/8" = 1'-0"



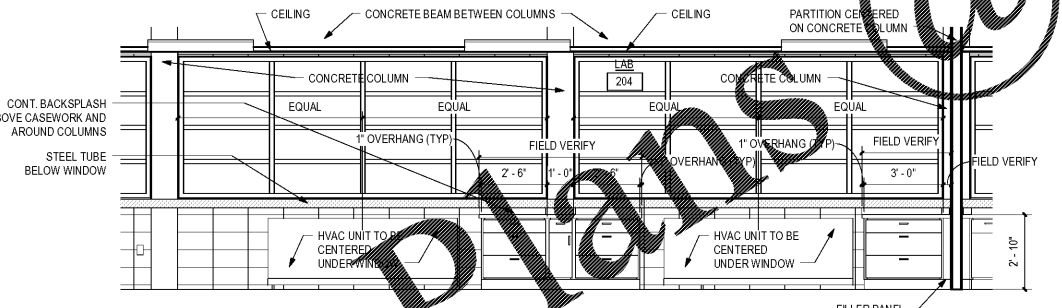
8 PREP ROOM 226 - SOUTH WALL  
SCALE: 3/8" = 1'-0"



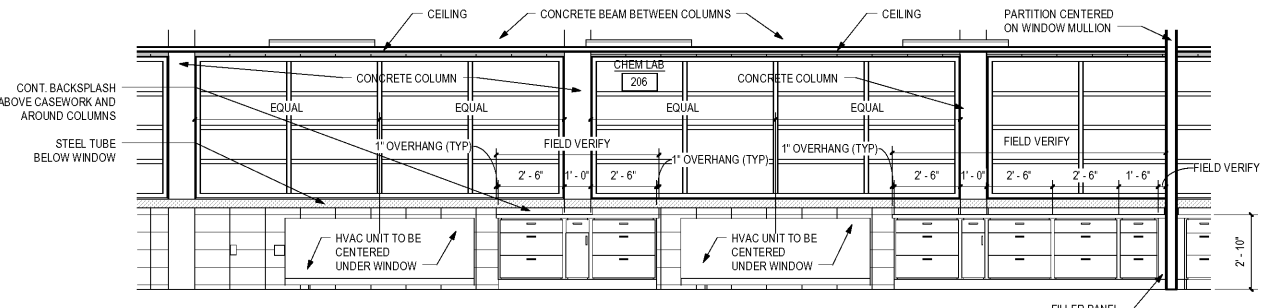
9 LAB 202 - EXTERIOR WALL CASEWORK (LAB 215 - OPPOSITE HAND)  
SCALE: 3/8" = 1'-0"



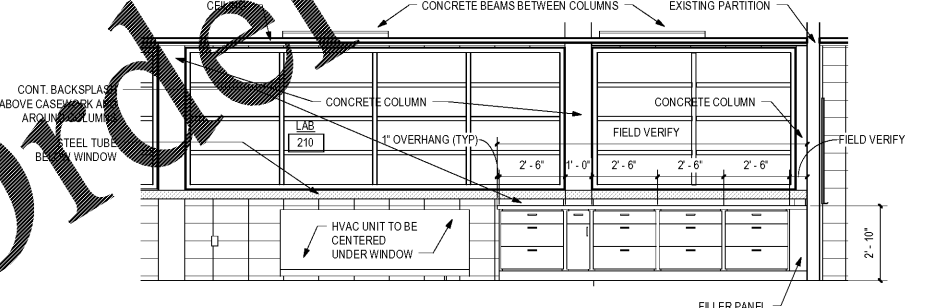
10 LAB 203 - EXTERIOR WALL CASEWORK (LAB 214 - OPPOSITE HAND)  
SCALE: 3/8" = 1'-0"



11 LAB 204 - EXTERIOR WALL CASEWORK (LAB 213 - OPPOSITE HAND)  
SCALE: 3/8" = 1'-0"



12 LAB 206 AND LAB 212 - EXTERIOR WALL CASEWORK (LAB 205 LAB 211 - OPPOSITE HAND)  
SCALE: 3/8" = 1'-0"



13 LAB 210 - EXTERIOR WALL CASEWORK  
SCALE: 3/8" = 1'-0"

JOHN A. TUTEN & ASSOCIATES  
ARCHITECTS  
4680 U.S. HIGHWAY 17  
BRUNSWICK, GEORGIA 31525  
www.jatuten.com

GLYNN ACADEMY HIGH SCHOOL  
SCIENCE BLDG. (5015) MODERNIZATION  
1001 MANSFIELD ST. BRUNSWICK GA, 31520  
GLYNN COUNTY BOARD OF EDUCATION

CAPITAL OUTLAY  
PROJECT # TBD  
SYSTEM CODE: 663  
SCHOOL CODE: 4752  
FTE: 1793

INTERIOR ELEVATIONS



ISSUED FOR:  
BID SET

DRAWN BY:  
CHECKED BY:  
APPROVED BY:  
01/19/19  
PROJECT DATE:  
1802  
PROJECT NUMBER:

SHEET NUMBER:  
A9.2

Copyright (c) 2019  
All Rights Reserved

1/18/2019 11:25:08 C:\Users\jmt\Documents\Revit\Local1802\_GA\_Science Building\1802\_Science Building.rvt