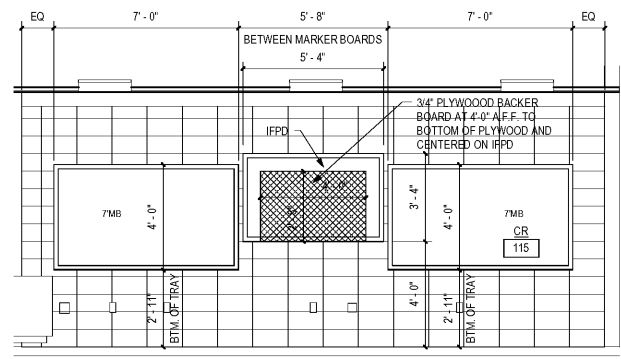
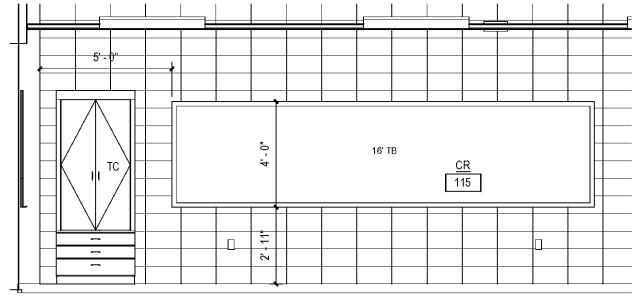


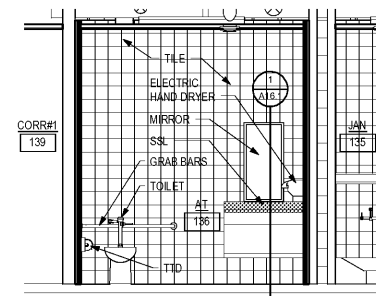
NO	REVISION / SUBMISSIONS	DATE



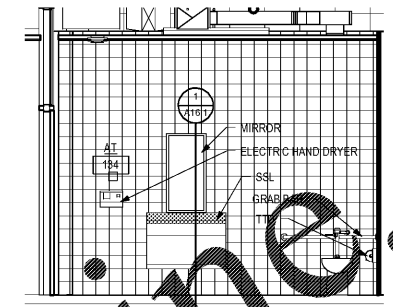
1 FIRST FLOOR TYP. CLASSROOM - TEACHING WALL  
A9.1 SCALE: 3/8" = 1'-0"



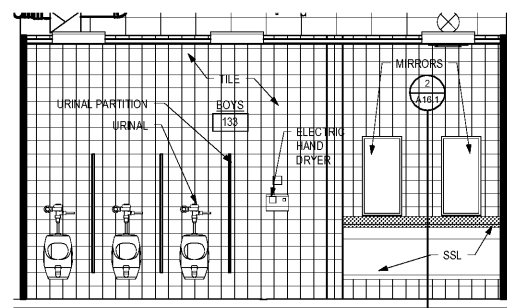
2 FIRST FLOOR TYP. CLASSROOM - CORRIDOR WALL  
A9.1 SCALE: 3/8" = 1'-0"



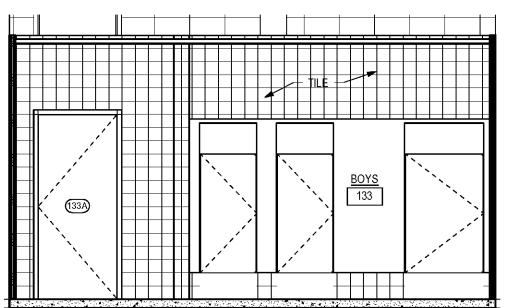
3 FIRST FLOOR ADULT TOILET - NORTH WALL  
A9.1 SCALE: 3/8" = 1'-0"



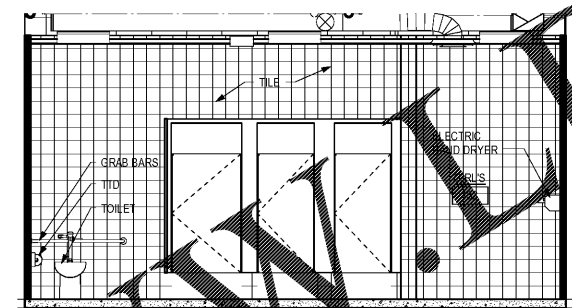
4 FIRST FLOOR ADULT TOILET - WEST WALL  
A9.1 SCALE: 3/8" = 1'-0"



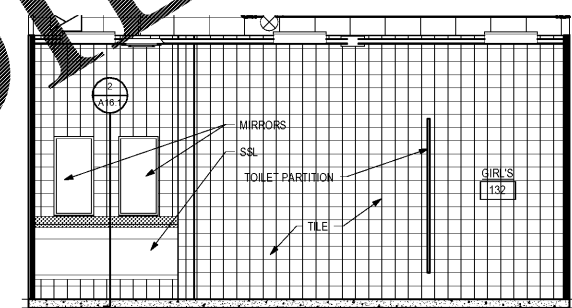
5 FIRST FLOOR BOYS RESTROOM - NORTH WALL  
A9.1 SCALE: 3/8" = 1'-0"



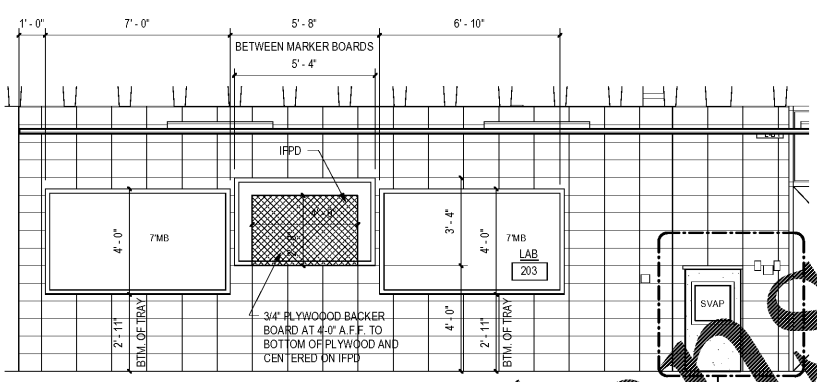
6 FIRST FLOOR BOYS RESTROOM - SOUTH WALL  
A9.1 SCALE: 3/8" = 1'-0"



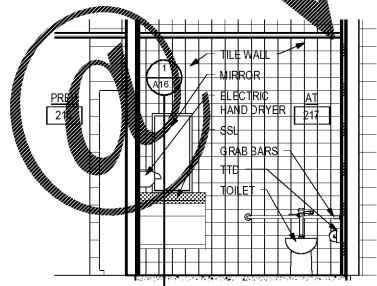
7 FIRST FLOOR GIRLS RESTROOM - EAST WALL  
A9.1 SCALE: 3/8" = 1'-0"



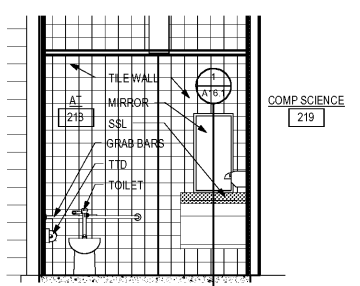
8 FIRST FLOOR GIRLS RESTROOM - WEST WALL  
A9.1 SCALE: 3/8" = 1'-0"



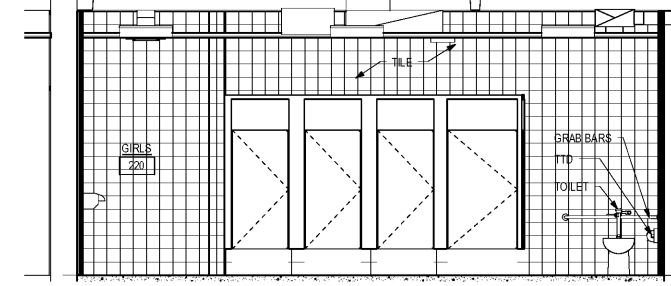
9 SECOND FLOOR TYP. LAB - TEACHING WALL  
A9.1 SCALE: 3/8" = 1'-0"



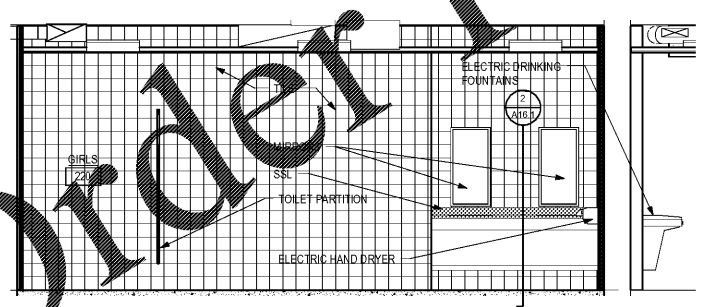
10 SECOND FLR RESTROOM - AT/217  
A9.1 SCALE: 3/8" = 1'-0"



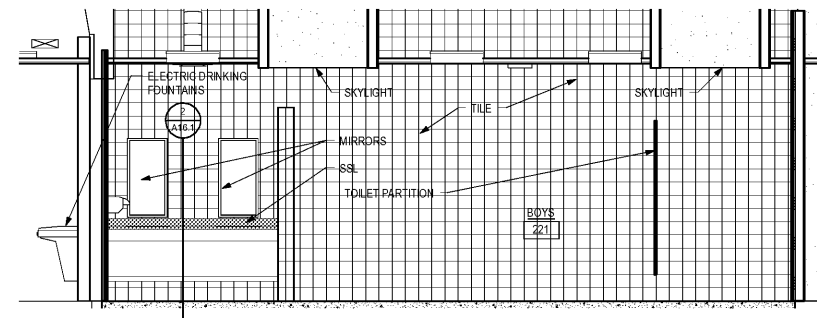
11 SECOND FLR RESTROOM - AT/218  
A9.1 SCALE: 3/8" = 1'-0"



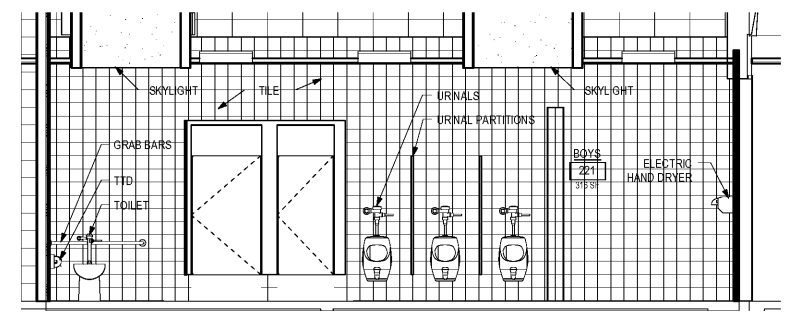
12 SECOND FLOOR GIRLS RESTROOM - EAST WALL  
A9.1 SCALE: 3/8" = 1'-0"



13 SECOND FLOOR GIRLS RESTROOM - WEST WALL  
A9.1 SCALE: 3/8" = 1'-0"



14 SECOND FLOOR BOYS RESTROOM - EAST WALL  
A9.1 SCALE: 3/8" = 1'-0"



15 SECOND FLOOR BOYS RESTROOM - WEST WALL  
A9.1 SCALE: 3/8" = 1'-0"

GLYNN ACADEMY HIGH SCHOOL  
SCIENCE BLDG. (5015) MODERNIZATION  
1001 MANSFIELD ST. BRUNSWICK GA, 31520  
GLYNN COUNTY BOARD OF EDUCATION

INTERIOR ELEVATIONS



ISSUED FOR:  
BID SET

DRAWN BY:  
CHECKED BY:  
APPROVED BY:  
01/19/19  
PROJECT DATE:  
1802  
PROJECT NUMBER

SHEET NUMBER:  
A9.1

Copyright © 2019  
All Rights Reserved

1/18/2019 11:25:03 C:\Users\jmt\Documents\Revit\Local1802\GA Science Building\1802 Science Building.rvt