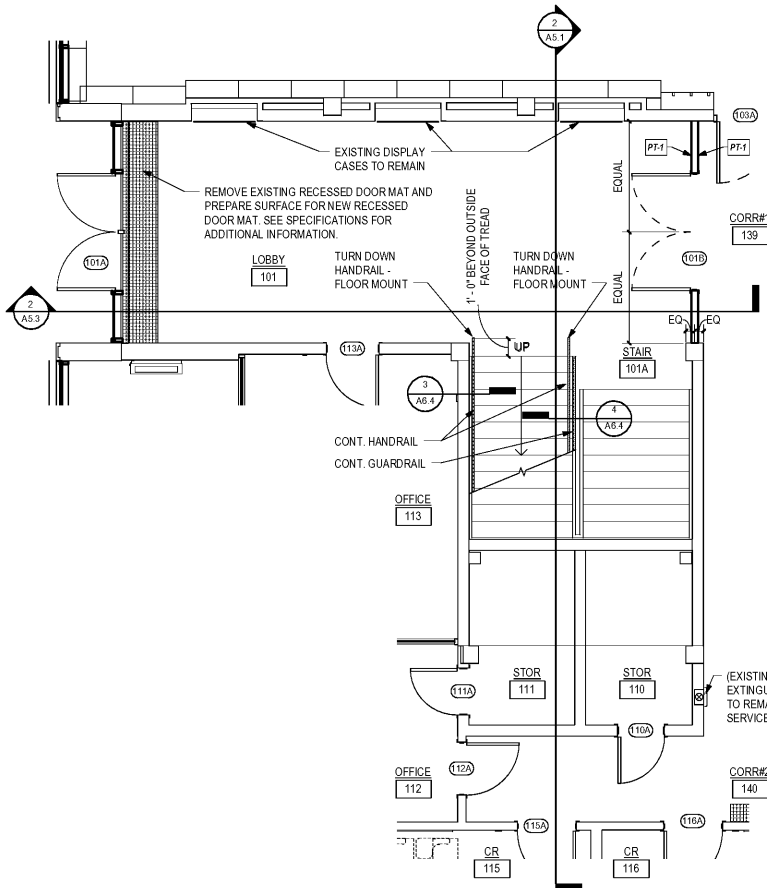
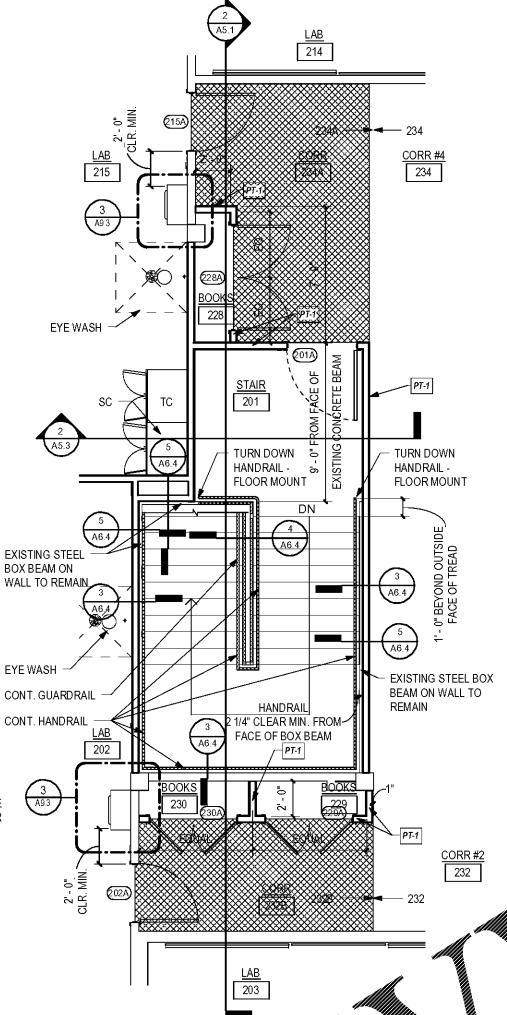


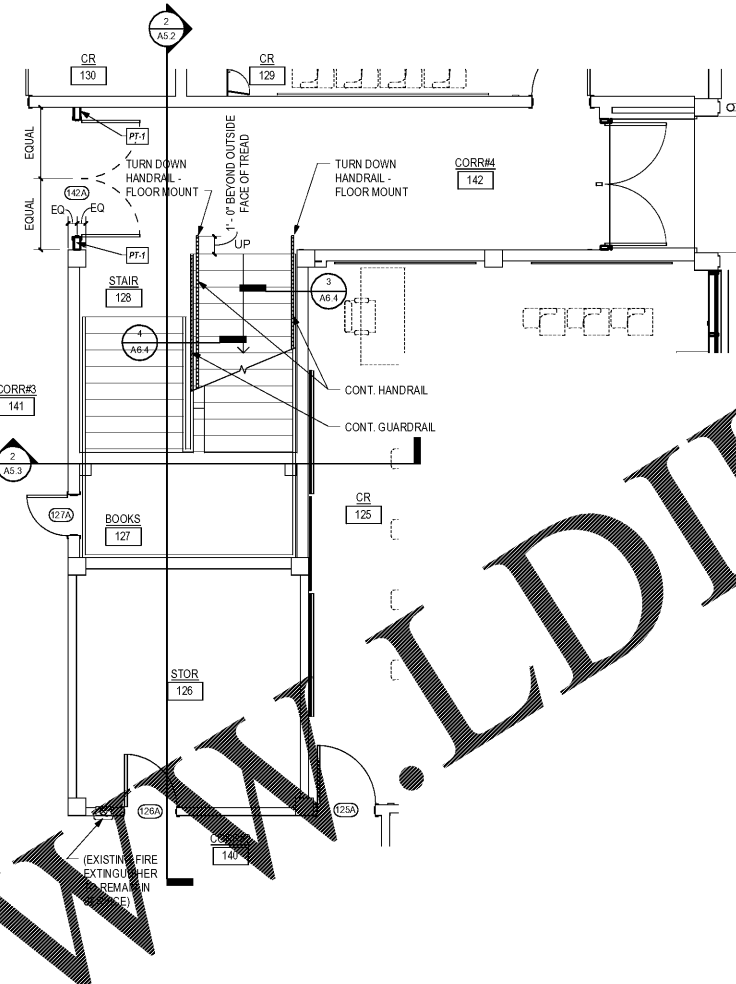
NO	REVISION / SUBMISSIONS	DATE



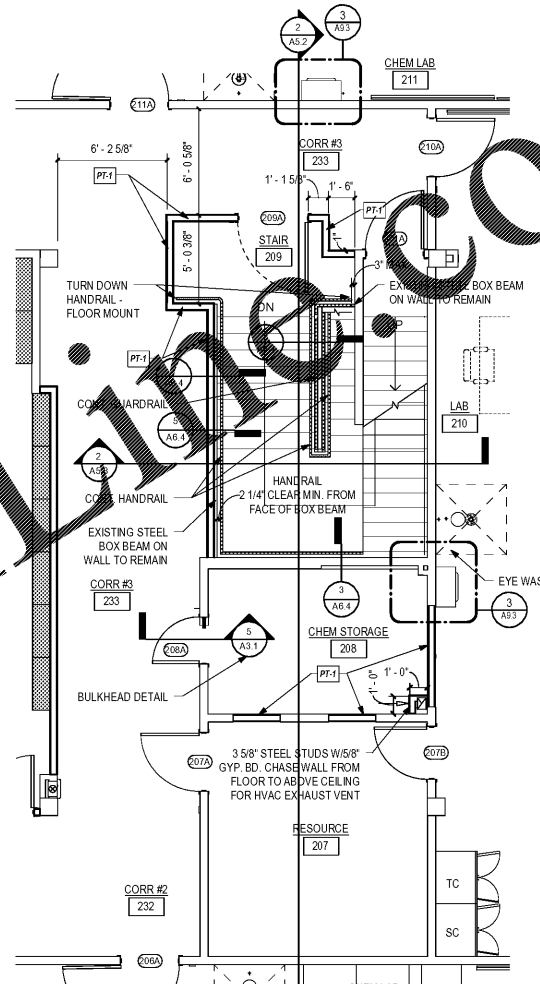
1 FIRST FLOOR - WEST STAIR TOWER
A8.3 SCALE: 1/4" = 1'-0"



2 SECOND FLOOR - WEST STAIR TOWER
A8.3 SCALE: 1/4" = 1'-0"



3 FIRST FLOOR - EAST STAIR TOWER
A8.3 SCALE: 1/4" = 1'-0"



4 SECOND FLOOR - EAST STAIR TOWER
A8.3 SCALE: 1/4" = 1'-0"

PARTITION TYPES (PT)

- STEEL STUD PARTITIONS ARE KEYPED WITH NUMBERED NOTES ON FLOOR PLANS. ALL PARTITIONS CONSTRUCTED AS FOLLOWS:
- 1. GALVANIZED STEEL STUDS AT 16" ON CENTER
 - 2. TOP OF PARTITIONS ANCHORED TO CONCRETE STRUCTURE ABOVE OR BRACED AT 48" O.C. (MIN.) TO BOTTOM OF CONCRETE STRUCTURE
 - 3. EXPOSED FACES ARE FINISHED WITH SYSTEMS LISTED IN NOTES BELOW. CHASE WALLS HAVE FINISH ONLY ON EXPOSED FACES
 - 4. WALL TILE INSTALLATION METHOD: 1/2" W/400-11; EPOXY BOND COAT; NO VAPOR BARRIERS OR WATERPROOF MEMBRANE; EPOXY GROUT.
 - 5. COORDINATE ALL PARTITION TYPES WITH FIRE RATINGS PER LIFE SAFETY PLANS AND FIRE-RATING DETAILS.
1. 3/8" x 20 GAUGE STUDS
 - a. 5/8" GYP BD BOTH SIDES
 - b. NO FINISH ON CONCEALED FACES
 2. 3/8" x 18 GAUGE STUDS
 - i. 1/2" PRESSURE TREATED PLYWOOD SCREWED TO STUDS
 - ii. 1/2" CEMENT BACKER BOARD SCREWED TO PLYWOOD
 - iii. TILE FINISH
 - iv. WHERE NO TILE FINISH: SCREW 1/2" GYP BD TO PWD. GYP BD TO EXTEND 1/2" BEHIND EDGE OF TILE AND ALIGN TO EDGE OF CEMENT BACKER BOARD
 - v. NO FINISH ON CONCEALED FACES
 3. 3/8" x 20 GAUGE STUDS
 - a. SIDE 2A
 - i. 1/2" CEMENT BACKER BOARD
 - ii. TILE FINISH
 - iii. WHERE NO TILE FINISH: SCREW 1/2" GYP BD TO PWD. GYP BD TO EXTEND 1/2" BEHIND EDGE OF TILE AND ALIGN TO EDGE OF CEMENT BACKER BOARD
 - iv. NO FINISH ON CONCEALED FACES
 - b. SIDE 2B
 - i. 5/8" GYP BD COORDINATE WITH INTERIOR ELEVATIONS
 4. 7/8" STEEL HAT CHANNELS ON WALL FACE @ 16" O.C. VERTICAL MAX
 - a. 1/2" PRESSURE TREATED PLYWOOD SCREWED TO HAT CHANNELS
 - b. 1/2" CEMENT BACKER BOARD SCREWED TO PLYWOOD
 - c. TILE FINISH
 - d. WHERE NO TILE FINISH: SCREW 1/2" GYP BD TO PWD. GYP BD TO EXTEND 1/2" BEHIND EDGE OF TILE AND ALIGN TO EDGE OF CEMENT BACKER BOARD

Order Plans @

WWW.LDINLINE.COM

JOHN A. TUTEN & ASSOCIATES
ARCHITECTS
4680 U.S. HIGHWAY 17
BRUNSWICK, GEORGIA 31525
www.jatuten.com

GLYNN ACADEMY HIGH SCHOOL
SCIENCE BLDG. (5015) MODERNIZATION
1001 MANSFIELD ST. BRUNSWICK GA, 31520
GLYNN COUNTY BOARD OF EDUCATION

CAPITAL OUTLAY
PROJECT # TBD
SYSTEM CODE: 663
SCHOOL CODE: 4752
FTE: 1796

ENLARGED STAIR PLANS



ISSUED FOR:
BID SET

DRAWN BY:
CHECKED BY:
APPROVED BY:
01/19/19
PROJECT DATE:
1802
PROJECT NUMBER:

SHEET NUMBER:
A8.3

Copyright (c) 2019
All Rights Reserved