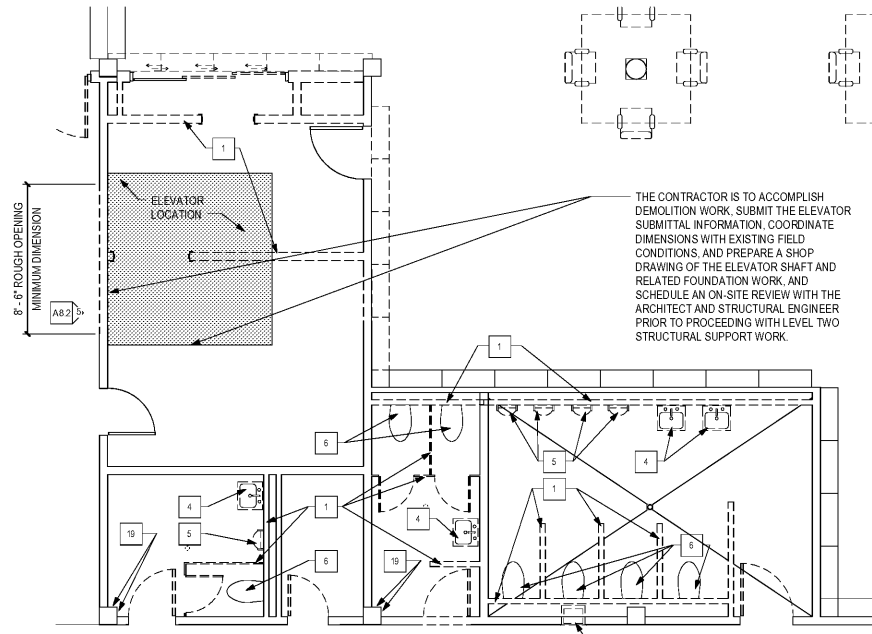


PARTITION TYPES (PT)

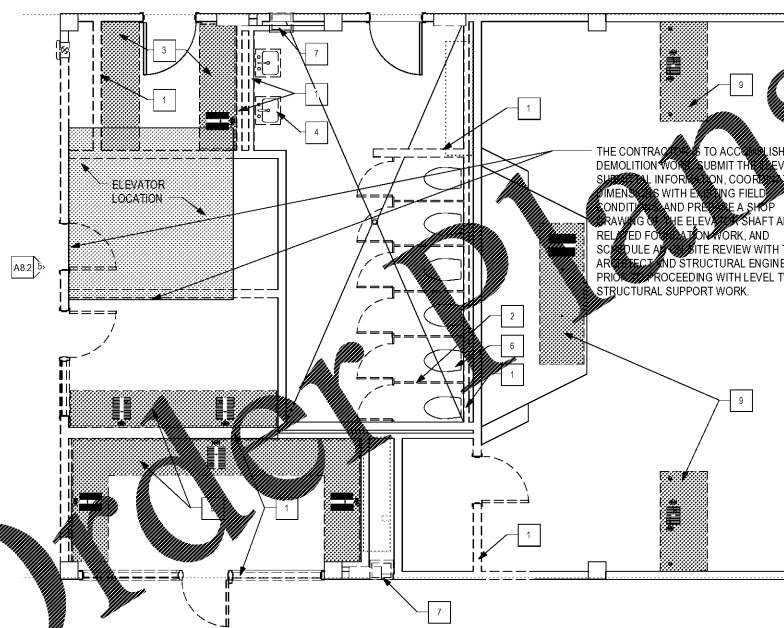
STEEL STUD PARTITIONS ARE KEYED WITH NUMBERED NOTES ON FLOOR PLANS. ALL PARTITIONS CONSTRUCTED AS FOLLOWS:
 GALVANIZED STEEL STUDS AT 16" ON CENTER
 TOP OF PARTITIONS ANCHORED TO CONCRETE STRUCTURE ABOVE OR BRACED AT 48" O.C. (MIN.) TO BOTTOM OF CONCRETE STRUCTURE
 EXPOSED FACES ARE FINISHED WITH SYSTEMS LISTED IN NOTES BELOW. CHASE WALLS HAVE FINISH ONLY ON EXPOSED FACES
 WALL TILE INSTALLATION METHOD TCA W444C-11, EPOXY BOND COAT, NO VAPOR BARRIER OR WATERPROOF MEMBRANE, EPOXY GROUT
 COORDINATE ALL PARTITION TYPES WITH FIRE RATINGS PER LIFE SAFETY PLANS AND FIRE RATING DETAILS

- 3/8" 20 GAUGE STUDS
 - 5/8" GYP BD ON BOTH SIDES
 - NO FINISH ON CONCEALED FACES
- 3/8" 19 GAUGE STUDS
 - SIDE 2A
 - 1/2" PRESSURE TREATED PLYWOOD SCREWED TO STUDS
 - 1/2" CEMENT BACKER BOARD SCREWED TO WOOD
 - TILE FINISH
 - WHERE NO TILE FINISH, SCREW 1/2" GYP BD TO PWD. GYP BD TO EXTEND 1/2" BEHIND EDGE OF TILE AND ALIGN TO EDGE OF CEMENT BACKER BOARD
 - NO FINISH ON CONCEALED FACES
 - SIDE 2B
 - 5/8" GYP BD COORDINATE WITH INTERIOR ELEVATIONS
- 3/8" 20 GAUGE STUDS
 - SIDE 3A
 - 1/2" CEMENT BACKER BOARD
 - TILE FINISH
 - WHERE NO TILE FINISH, SCREW 1/2" GYP BD TO PWD. GYP BD TO EXTEND 1/2" BEHIND EDGE OF TILE AND ALIGN TO EDGE OF CEMENT BACKER BOARD
 - NO FINISH ON CONCEALED FACES
 - SIDE 3B
 - 5/8" GYP BD COORDINATE WITH INTERIOR ELEVATIONS
- 7/8" STEEL HAT CHANNELS ON WALL FACE @ 16" O.C. VERTICAL MAX
 - 1/2" PRESSURE TREATED PLYWOOD SCREWED TO HAT CHANNELS
 - 1/2" CEMENT BACKER BOARD SCREWED TO PLYWOOD
 - TILE FINISH
 - WHERE NO TILE FINISH, SCREW 1/2" GYP BD TO PWD. GYP BD TO EXTEND 1/2" BEHIND EDGE OF TILE AND ALIGN TO EDGE OF CEMENT BACKER BOARD



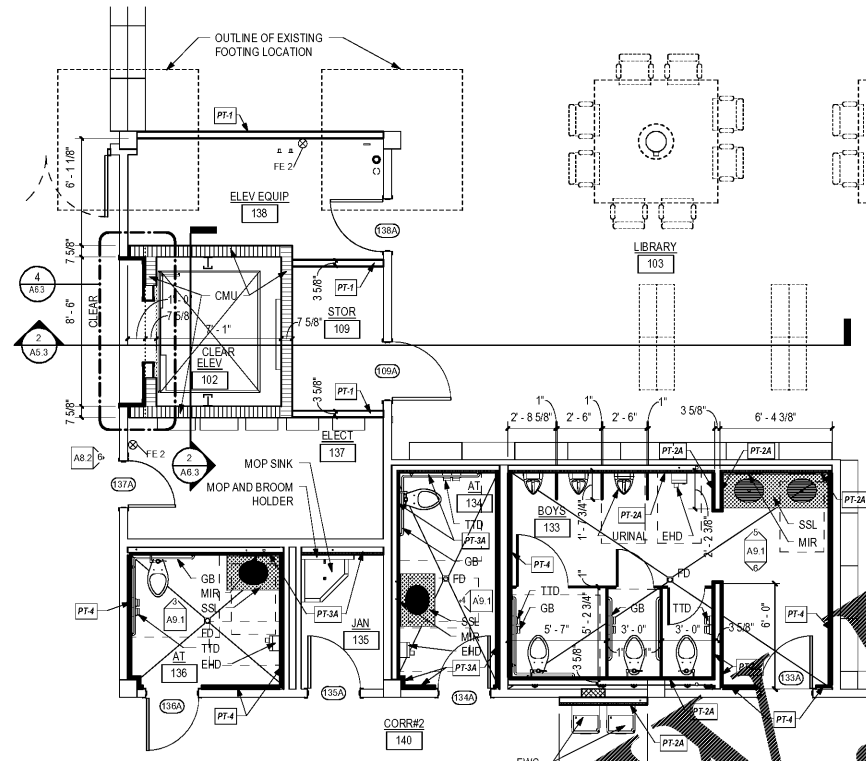
SEE DEMOLITION NUMBERED NOTES ON DEMOLITION FLOOR PLANS

1 FIRST FLOOR - ELEVATOR DEMOLITION
 A8.2 SCALE: 1/4" = 1'-0"

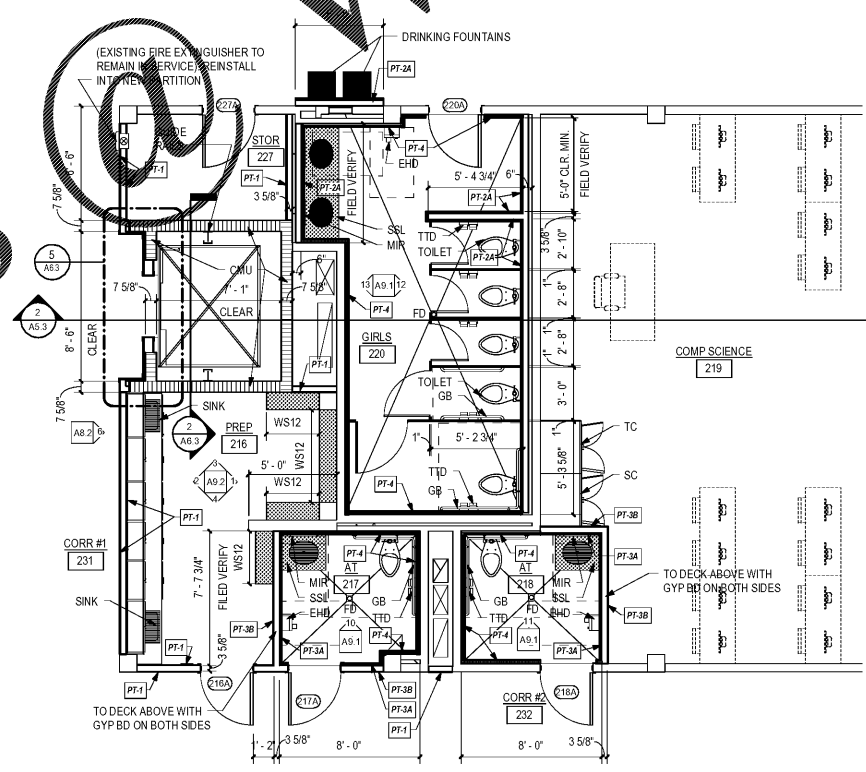


SEE DEMOLITION NUMBERED NOTES ON DEMOLITION FLOOR PLANS

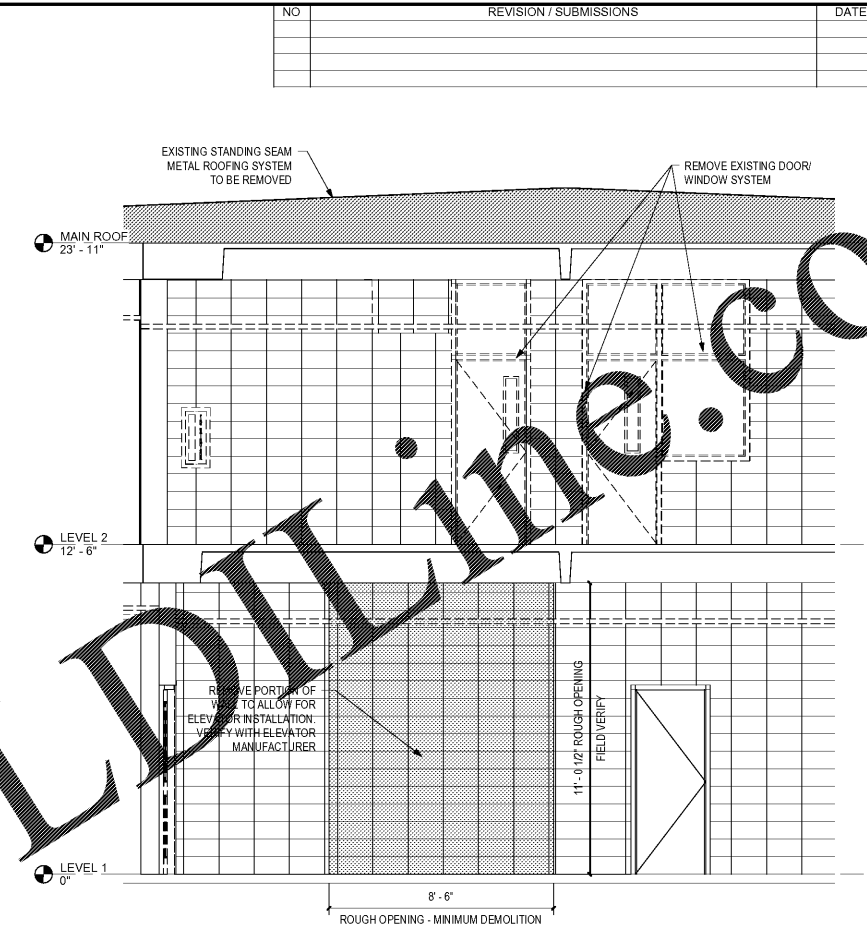
2 SECOND FLOOR - ELEVATOR DEMOLITION
 A8.2 SCALE: 1/4" = 1'-0"



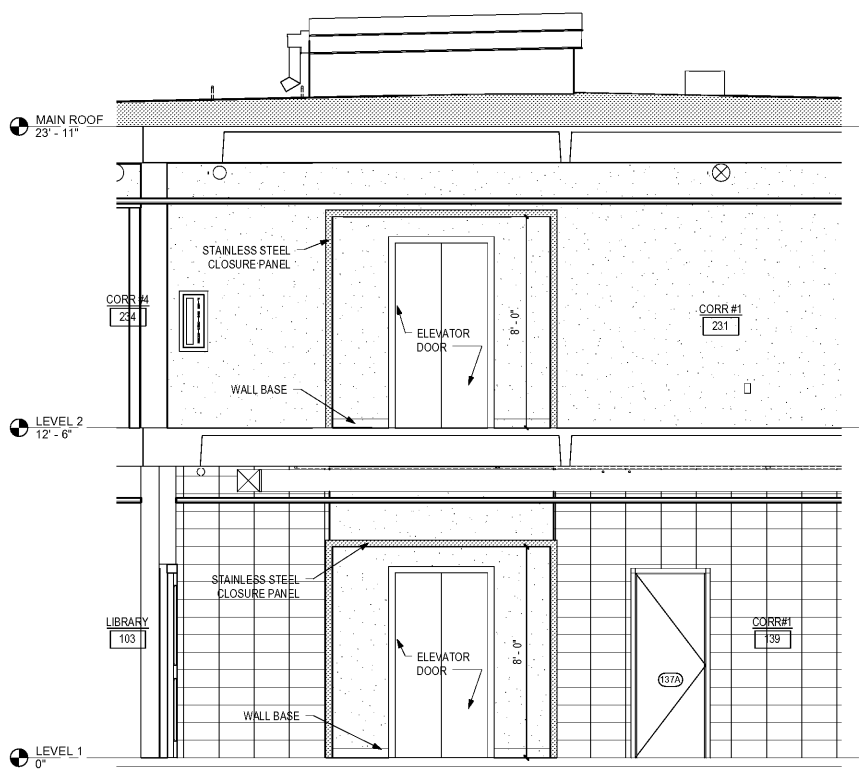
3 FIRST FLOOR - BOYS RESTROOM/ ELEVATOR
 A8.2 SCALE: 1/4" = 1'-0"



4 SECOND FLOOR - GIRLS RESTROOM/ ELEVATOR
 A8.2 SCALE: 1/4" = 1'-0"



5 ELEVATOR DEMOLITION - LEVEL 1 AND LEVEL 2
 A8.2 SCALE: 3/8" = 1'-0"



6 ELEVATOR RENOVATION - LEVEL 1 AND LEVEL 2
 A8.2 SCALE: 3/8" = 1'-0"

NO	REVISION / SUBMISSIONS	DATE

JOHN A. TUTEN & ASSOCIATES
 ARCHITECTS
 4680 U.S. HIGHWAY 17
 BRUNSWICK, GEORGIA 31525
 www.jatuten.com

GLYNN ACADEMY HIGH SCHOOL
 SCIENCE BLDG. (5015) MODERNIZATION
 1001 MANSFIELD ST. BRUNSWICK GA, 31520
 GLYNN COUNTY BOARD OF EDUCATION

CAPITAL OUTLAY
 PROJECT # TBD
 SYSTEM CODE: 663
 SCHOOL CODE: 4752
 FTE: 1796

ENLARGED ELEVATOR PLANS AND INTERIOR ELEVATIONS



ISSUED FOR:

BID SET

DRAWN BY:
 CHECKED BY:
 APPROVED BY:
 01/19/19
 PROJECT DATE:
 1802
 PROJECT NUMBER

SHEET NUMBER:
A8.2

Copyright (c) 2019
 All Rights Reserved

1/18/2019 11:24:52 C:\Users\jmt\Documents\Revit\Local1802_GA_Science Building1802_Science Building.rvt