

JOHN A. TUTEN & ASSOCIATES
 ARCHITECTS
 4680 U.S. HIGHWAY 17
 BRUNSWICK, GEORGIA 31525
 www.jatuten.com

GLYNN ACADEMY HIGH SCHOOL
 SCIENCE BLDG. (5015) MODERNIZATION
 1001 MANSFIELD ST. BRUNSWICK GA, 31520
 GLYNN COUNTY BOARD OF EDUCATION

CAPITAL OUTLAY
 PROJECT # TBD
 SYSTEM CODE: 663
 SCHOOL CODE: 0752
 FTE: 1793

ENLARGED FLOOR PLANS



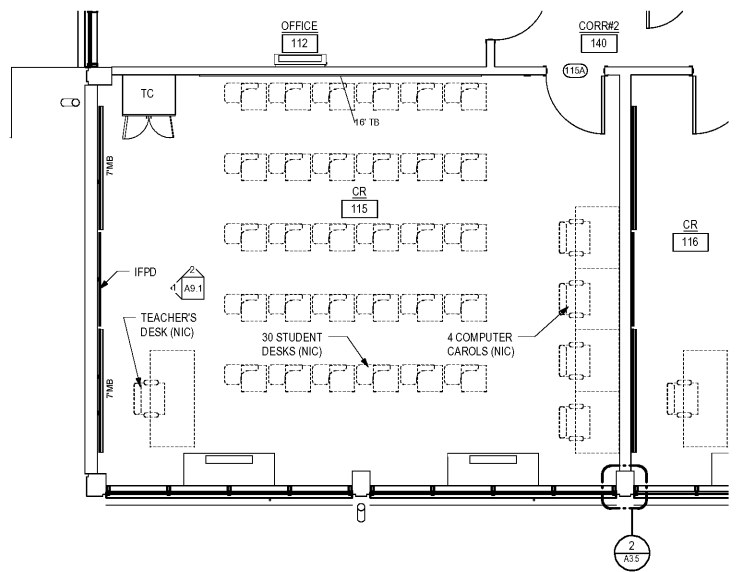
ISSUED FOR:
 BID SET

DRAWN BY:
 CHECKED BY:
 APPROVED BY:
 01/19/19
 PROJECT DATE

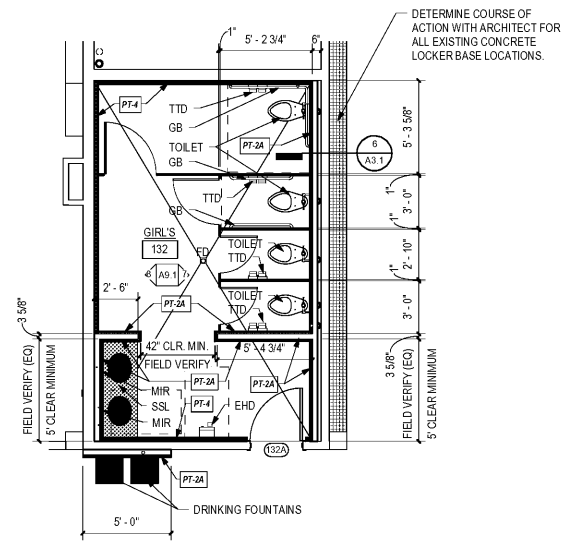
1802
 PROJECT NUMBER

SHEET NUMBER:
A8.1

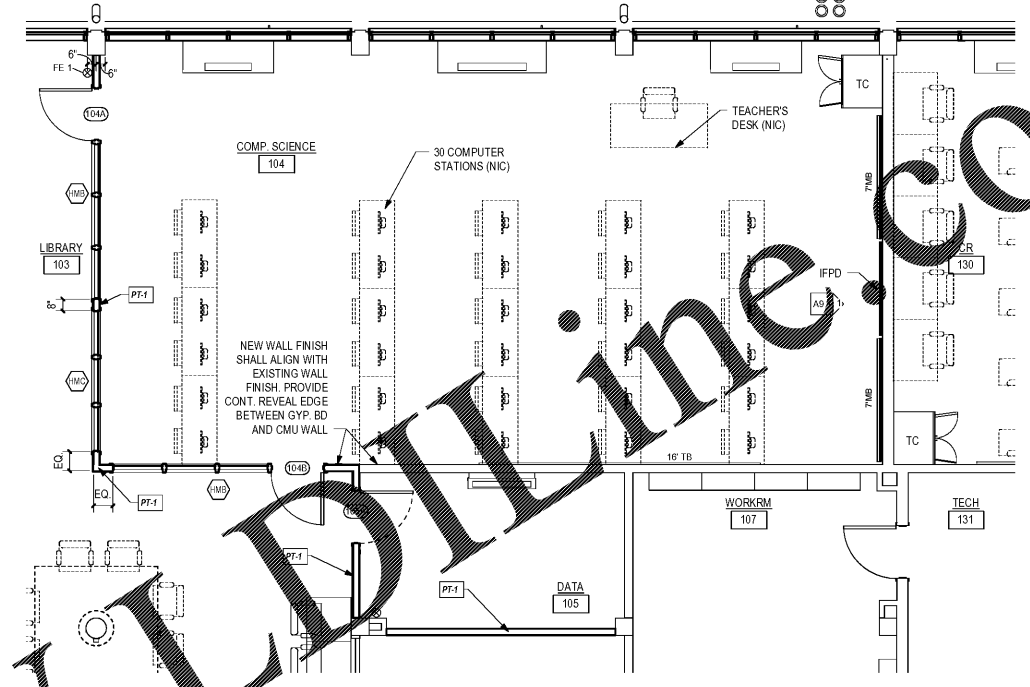
Copyright © 2019
 All Rights Reserved



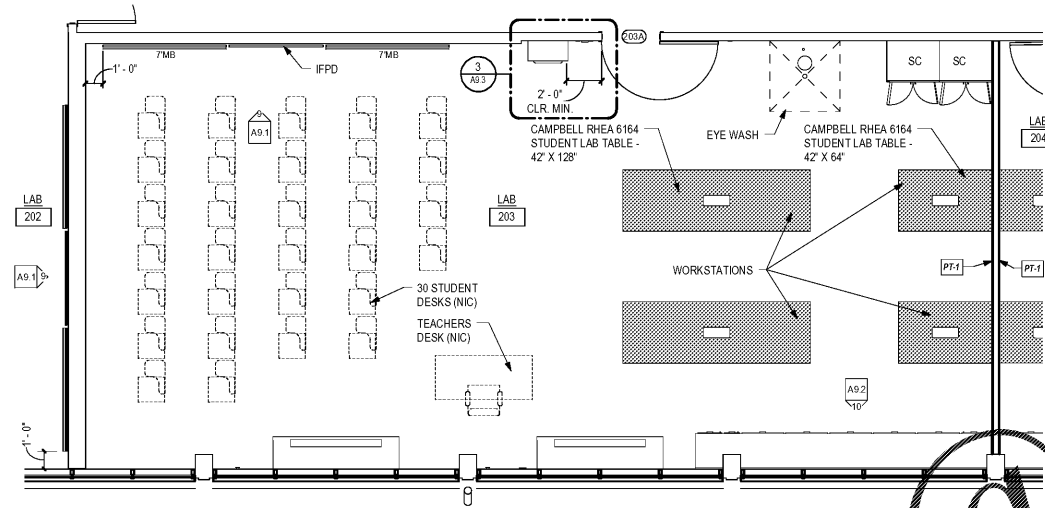
1 FIRST FLOOR - TYPICAL CLASSROOM
 A8.1 SCALE: 1/4" = 1'-0"



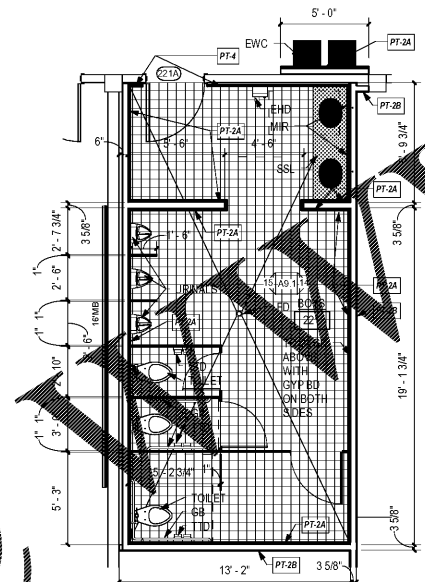
2 FIRST FLOOR - GIRLS RESTROOM
 A8.1 SCALE: 1/4" = 1'-0"



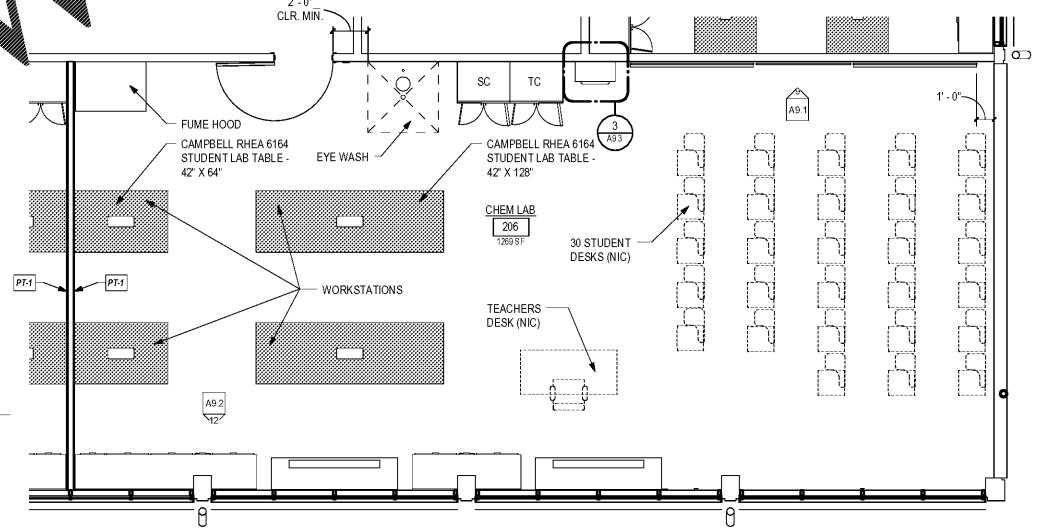
3 FIRST FLOOR PLAN - READING ROOM
 A8.1 SCALE: 1/4" = 1'-0"



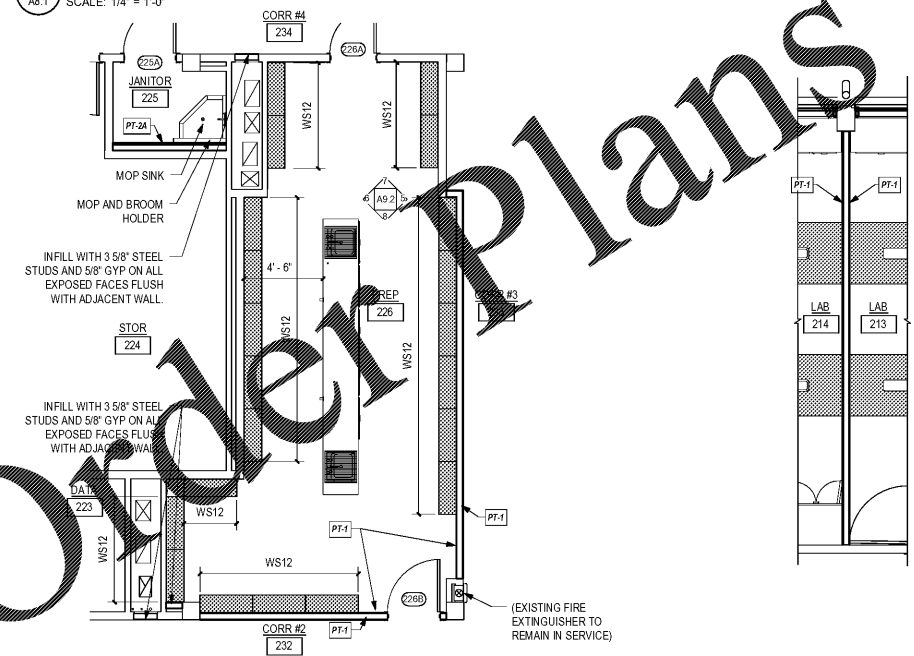
4 SECOND FLOOR - LAB
 A8.1 SCALE: 1/4" = 1'-0"



5 SECOND FLOOR - BOYS RESTROOM
 A8.1 SCALE: 1/4" = 1'-0"

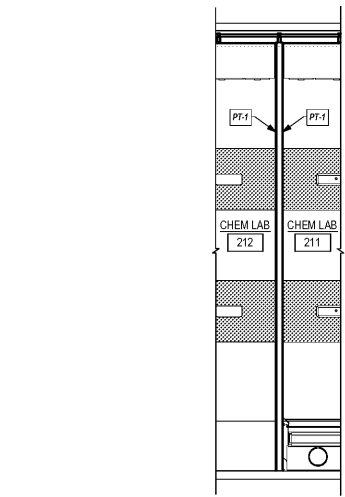


6 SECOND FLOOR - CHEMISTRY LAB
 A8.1 SCALE: 1/4" = 1'-0"



7 SECOND FLOOR - EAST PREP ROOM
 A8.1 SCALE: 1/4" = 1'-0"

8 PARTITION TYPE - LAB 214 & LAB 213
 A8.1 SCALE: 1/4" = 1'-0"



9 PARTITION TYPE - CHEM LAB 212 & CHEM LAB 211
 A8.1 SCALE: 1/4" = 1'-0"

PARTITION TYPES (PT)

- STEEL STUD PARTITIONS ARE KEYS WITH NUMBERED NOTES ON FLOOR PLANS. ALL PARTITIONS CONSTRUCTED AS FOLLOWS:
- TOP OF PARTITIONS ANCHORED TO CONCRETE STRUCTURE ABOVE OR BRACED AT 48" O.C. (MIN.) TO BOTTOM OF CONCRETE STRUCTURE.
 - EXPOSED FACES ARE FINISHED WITH SYSTEMS LISTED IN NOTES BELOW. CHASE WALLS HAVE FINISH ONLY ON EXPOSED FACES.
 - WALL TILE INSTALLATION METHOD TCA W244C. 11 EPOXY BOND COAT. NO VAPOR BARRIER OR WATERPROOF MEMBRANE. EPOXY GROUT.
 - COORDINATE ALL PARTITION TYPES WITH FIRE RATINGS FOR LIFE SAFETY PLANS AND FIRE RATING DETAILS.
- 1 3/8" 20 GAUGE STUDS
 - a 5/8" GYP BD BOTH SIDES
 - b NO FINISH ON CONCEALED FACES
 - 2 3/8" 18 GAUGE STUDS
 - a SIDE 2A
 - i 1/2" PRESSURE TREATED PLYWOOD SCREWED TO STUDS
 - ii 1/2" CEMENT BACKER BOARD SCREWED TO PLYWOOD
 - iii TILE FINISH
 - iv WHERE NO TILE FINISH, SCREW 1/2" GYP BD TO PWD. GYP BD TO EXTEND 1/2" BEHIND EDGE OF TILE AND ALIGN TO EDGE OF CEMENT BACKER BOARD
 - v NO FINISH ON CONCEALED FACES
 - b SIDE 2B
 - i 5/8" GYP BD COORDINATE WITH INTERIOR ELEVATIONS
 - 3 3/8" 20 GAUGE STUDS
 - a SIDE 3A
 - i 1/2" CEMENT BACKER BOARD
 - ii TILE FINISH
 - iii WHERE NO TILE FINISH, SCREW 1/2" GYP BD TO PWD. GYP BD TO EXTEND 1/2" BEHIND EDGE OF TILE AND ALIGN TO EDGE OF CEMENT BACKER BOARD
 - iv NO FINISH ON CONCEALED FACES
 - b SIDE 3B
 - i 5/8" GYP BD COORDINATE WITH INTERIOR ELEVATIONS
 - 4 7/8" STEEL HAT CHANNELS ON WALL FACE @ 16" O.C. VERTICAL MAX.
 - a 1/2" PRESSURE TREATED PLYWOOD SCREWED TO HAT CHANNELS
 - b 1/2" CEMENT BACKER BOARD SCREWED TO PLYWOOD
 - c TILE FINISH
 - d WHERE NO TILE FINISH, SCREW 1/2" GYP BD TO PWD. GYP BD TO EXTEND 1/2" BEHIND EDGE OF TILE AND ALIGN TO EDGE OF CEMENT BACKER BOARD

1/18/2019 11:24:49 C:\Users\jmt\Documents\Revit\Local1802\GA Science Building\1802 Science Building.rvt