

NO	REVISION / SUBMISSIONS	DATE

JOHN A. TUTEN & ASSOCIATES
 ARCHITECTS
 4680 U.S. HIGHWAY 17, SUITE 100
 BRUNSWICK, GEORGIA 31525
 www.jatuten.com

GLYNN ACADEMY HIGH SCHOOL
 SCIENCE BLDG. (5015) MODERNIZATION
 1001 MANSFIELD ST. BRUNSWICK GA, 31520
 GLYNN COUNTY BOARD OF EDUCATION

CAPITAL OUTLAY
 PROJECT # TRD
 SYSTEM CODE: 663
 SCHOOL CODE: 4752
 FTE: 1796

WALL SECTIONS AROUND MAIN BUILDING

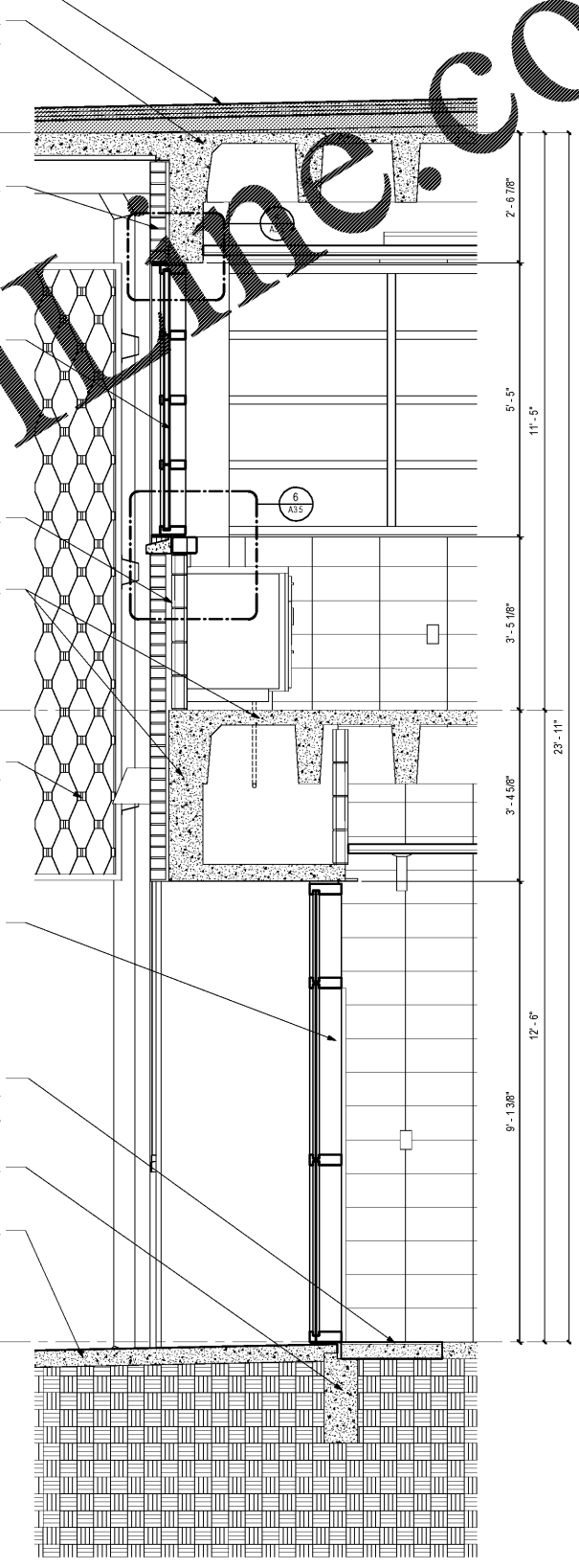
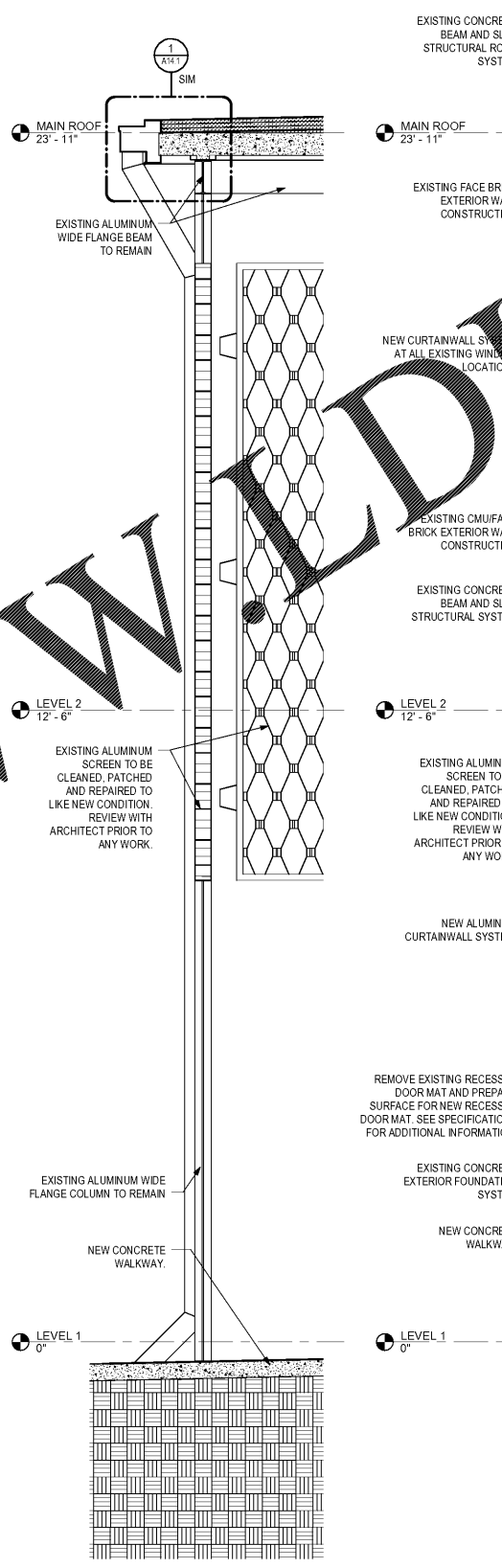
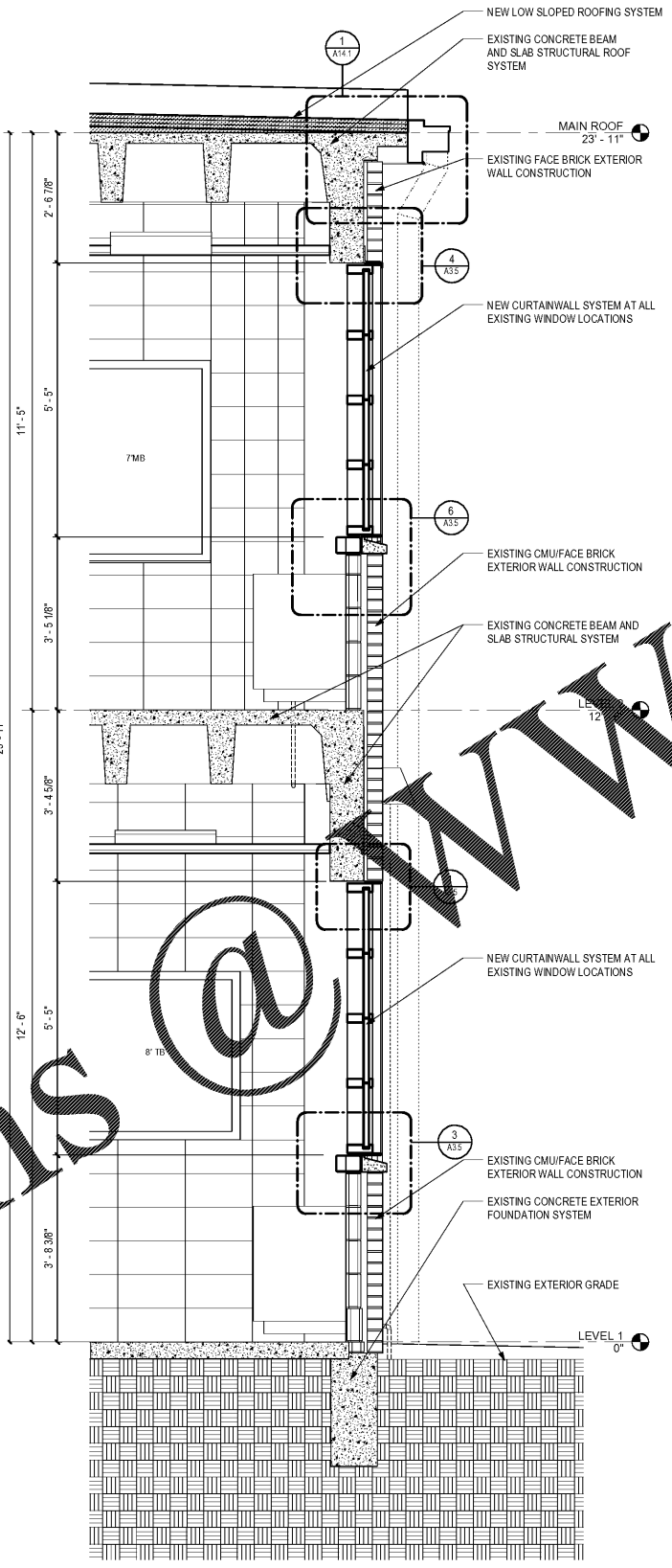
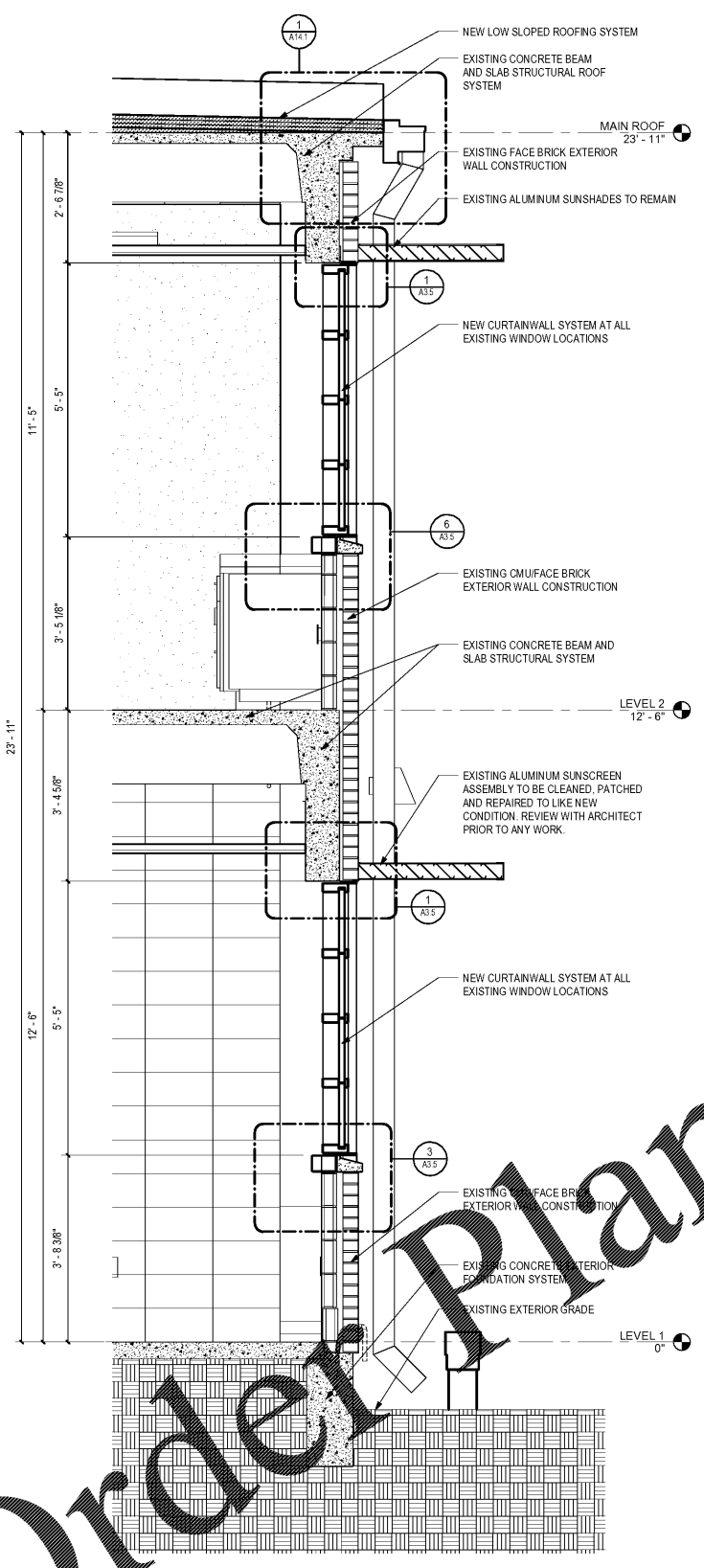


ISSUED FOR:
 BID SET

DRAWN BY:
 CHECKED BY:
 APPROVED BY:
 01/19/19
 PROJECT DATE:
 1802
 PROJECT NUMBER

SHEET NUMBER:
A6.1

Copyright (c) 2019
 All Rights Reserved



1 @ SOUTH SIDE OF BUILDING - NORTH SIDE SIMILAR
 A6.1 SCALE: 3/4" = 1'-0"

2 @ EAST SIDE OF BUILDING
 A6.1 SCALE: 3/4" = 1'-0"

3 @ ENTRANCE CANOPY ON WEST SIDE
 A6.1 SCALE: 3/4" = 1'-0"

4 @ WEST SIDE OF BUILDING
 A6.1 SCALE: 3/4" = 1'-0"

1/18/2019 11:24:22 C:\Users\jmt\Documents\Projects\Revit\Local1802_GA_Science Building\1802_Science Building.rvt

Order Plans @ WWW.LDLINE.COM