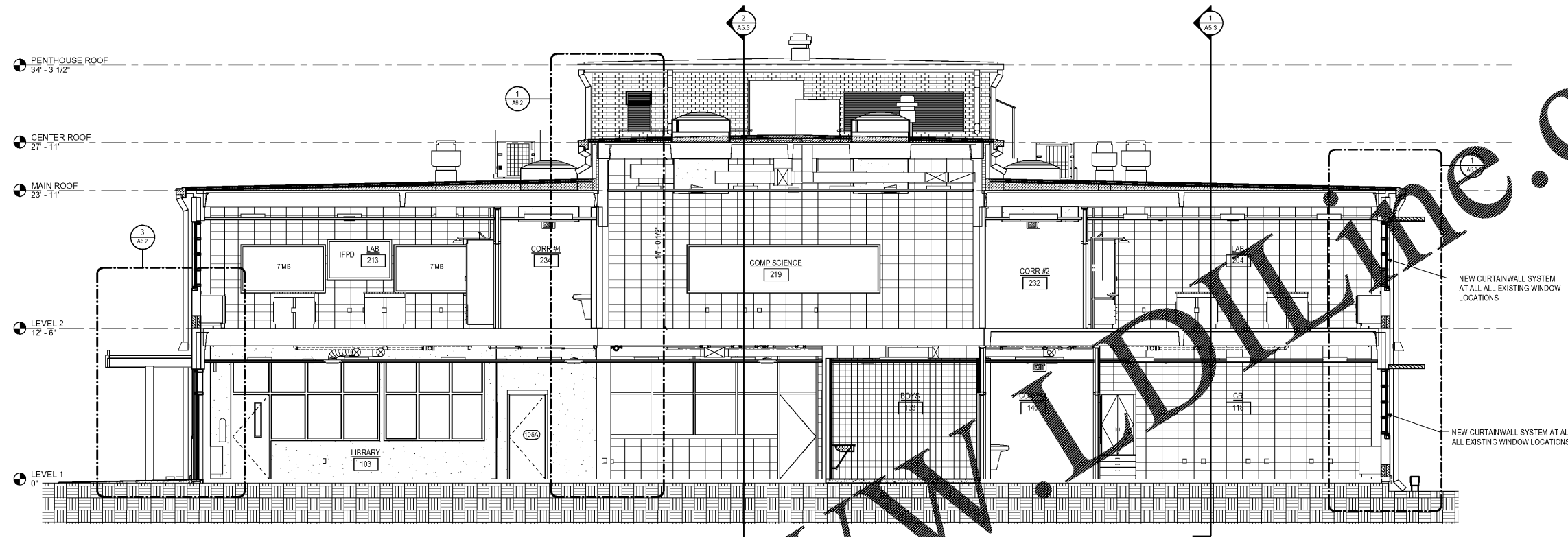
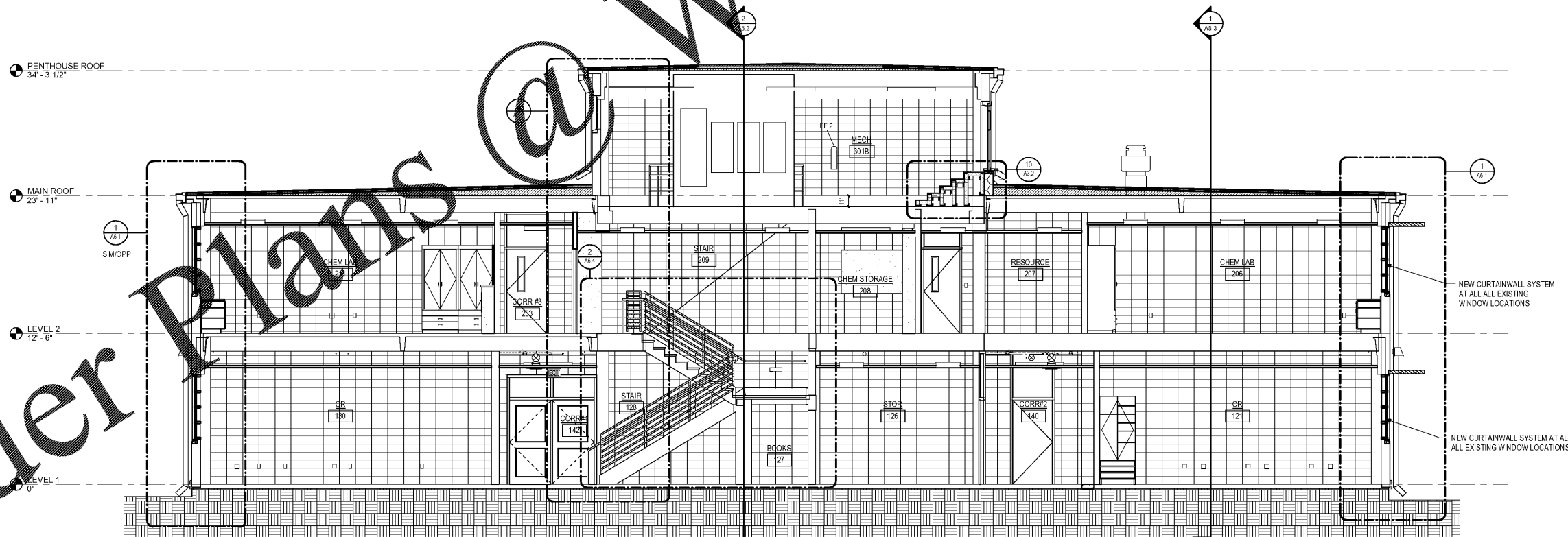


NO	REVISION / SUBMISSIONS	DATE



1 THRU CLASSROOMS AND LABS.
 A5.2 SCALE: 1/4" = 1'-0"



2 THRU EAST STAIR TOWER
 A5.2 SCALE: 1/4" = 1'-0"

JOHN A. TUTEN & ASSOCIATES
 ARCHITECTS
 4680 U.S. HIGHWAY 17
 BRUNSWICK, GEORGIA 31525
 www.jatuten.com

GLYNN ACADEMY HIGH SCHOOL
 SCIENCE BLDG. (5015) MODERNIZATION
 1001 MANSFIELD ST. BRUNSWICK GA, 31520
 GLYNN COUNTY BOARD OF EDUCATION

CAPITAL OUTLAY
 PROJECT # TRD
 SYSTEM CODE: 663
 SCHOOL CODE: 4752
 FTE: 1796

BUILDING SECTIONS



ISSUED FOR:
 BID SET

DRAWN BY:
 CHECKED BY:
 APPROVED BY:
 01/19/19
 PROJECT DATE:
 1802
 PROJECT NUMBER

SHEET NUMBER:
A5.2

Copyright (c) 2019
 All Rights Reserved

1/18/2019 11:24:09 C:\Users\jmt\Documents\Revit\Local1802\GA Science Building1802 Science Building.rvt

Order Plans @ WWW.ONLINE.COM